



CHESTER UPLAND SCHOOL DISTRICT

RESTROOM UPGRADES

MAIN ELEMETARY SCHOOL
ADDRESS: 704 Main St, Upland, PA 19015

STEM AT SHOLWATER HIGH SCHOOL
ADDRESS: 1100 W 10th St, Chester, PA 19013

CHESTER HIGH SCHOOL
ADDRESS:200 W 9th St, Chester, PA 19013

CUSA ELEMENTARY SCHOOL
ADDRESS: 501 W 9th St, Chester, PA 19013

BID SET 03.13.2023

DRAWING LIST	
CS	COVER SHEET AND DRAWING LIST
A 101	MAIN ELEMENTARY - KEY PLAN
A 102	STEM- KEY PLAN
A 103	HIGH SCHOOL - 1ST FLOOR - KEY PLAN
A 104	HIGH SCHOOL - 2ND FLOOR - KEY PLAN
A 105	HIGH SCHOOL - 3RD FLOOR - KEY PLAN
A 106	HIGH SCHOOL - 4TH FLOOR - KEY PLAN
A 107	HIGH SCHOOL - 5TH FLOOR - KEY PLAN
A 108	CUSA - 1ST FLOOR - KEY PLAN
A 109	CUSA - 2ND FLOOR - KEY PLAN
A 110	CUSA - 3RD FLOOR - KEY PLAN
A 200	SCHEDULES
A 201	MAIN ELEMENTARY - SPACE SCHEDULE
A 202	STEM - SPACE SCHEDULE
A 203	HIGH SCHOOL - 1ST FLOOR - SPACE SCHEDULE
A 204	HIGH SCHOOL - 2ND FLOOR - SPACE SCHEDULE
A 205	HIGH SCHOOL - 3RD FLOOR - SPACE SCHEDULE
A 206	HIGH SCHOOL - 4 AND 5TH FLOOR - SPACE SCHEDULE
A 208	CUSA - SPACE SCHEDULE
AD 301	HIGH SCHOOL 3RD FLOOR RESTROOM DEMO PLANS
A 301	HIGH SCHOOL 3RD FLOOR RESTROOM NEW PLANS
AD 401	CUSA STAFF 1ST FLOOR RESTROOM DEMO PLANS
A 401	CUSA STAFF 1ST FLOOR RESTROOM NEW PLANS



MG Engineering

CUSD RESTROOM UPGRADES

No.	Description	Date

COVER SHEET

Project number	202301.0010	CS
Date	02/15/2023	
Drawn by	Author	
Checked by	Checker	Scale

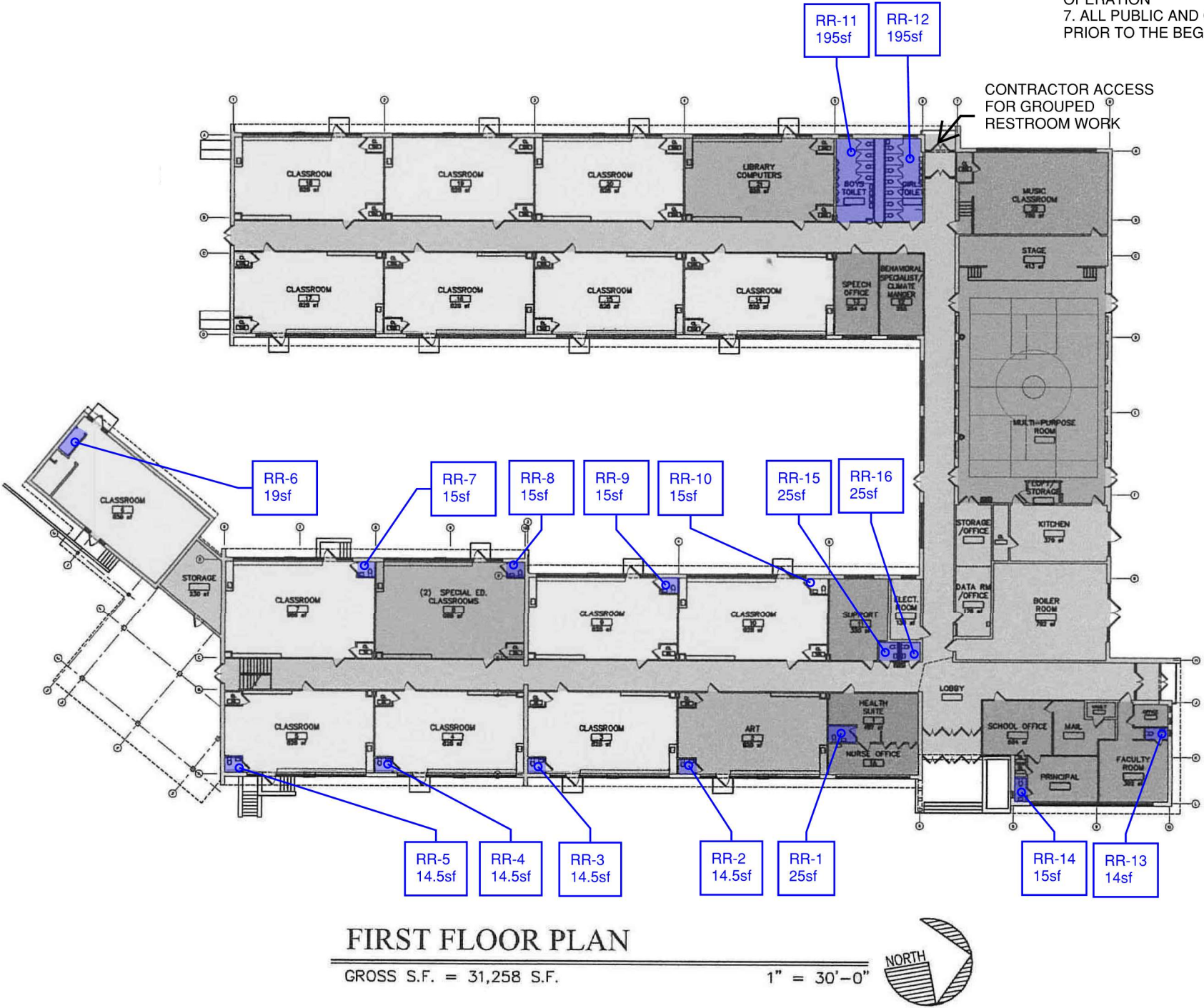
ROOM NAME	ROOM TAG	AREA (SF)
Health Suite	RR-1	25
Classroom 2	RR-2	13
Classroom 3	RR-3	14.5
Classroom 4	RR-4	14.5
Classroom 5	RR-5	14.5
Classroom 7	RR-7	14.5
Classroom 8	RR-8	12
Classroom 9	RR-9	14.5
Classroom 10	RR-10	14.5
Group Boys	RR-11	189
Group Girls	RR-12	193.5
Staff Break RR	RR-13	14
Principals Office RR	RR-14	14.7
Staff Mens	RR-15	25
Staff Womens	RR-16	25
Annex Classroom 6	RR-6	18.75

GENERAL NOTES:

1. REFER TO DETAILED SPACE SCHEDULE FOR SCOPE NOTES
2. CONTRACTOR TO COMPLETE EXISTING CONDITIONS VERIFICATION INFORM ENGINEER OF ANY DISCREPANCIES
3. CONTRACTOR TO MEASURE FOR TOILET PARTITION SHOP DRAWINGS PREPARATION REFER TO SPEC DIV 10
4. CLEAN ALL CLASSROOM WALL TILES AND GROUT
5. FLOOR EPOXY FLOOR AND BASE PREP REFER TO SEC DIV 8 FOR DETAILED PROCEDURES

CONSTRUCTION SEQUENCE NOTES:

1. SCHOOL OPERATION HOURS ARE 7AM TO 4PM MON-FRI DURING SCHOOL YEAR
2. ALL CLASSROOM RESTROOMS MUST BE COMPLETED OUTSIDE OF SCHOOL HOURS AND ON WEEKENDS. NO MORE THAN 3 CLASSROOMS RESTROOMS MAY BE COMPLETED IN A PHASE.
3. COMPLETE RR15 AND RR16 PRIOR TO CLOSING AND WORKING IN RR11 AND RR12
4. ANNEX CLASSROOM 6 RR6 MUST BE COMPLETED OUTSIDE OF REGULAR SCHOOL YEAR FOR STUDENT ACCESS TO ROOM
5. CONTRACTOR TO SUBMIT DETAILED PAHSING AND STAGNG PLAN FOR CUSD REVIEW AND APPROVAL.
6. CONTRACTOR TO MINIIMIZE DISRUPTION TO SCHOOL OPERATION
7. ALL PUBLIC AND CLASSROOM SPACES MUST BE CLEANED PRIOR TO THE BEGINNING OF EACH SCHOOL DAY.



**MAIN
ELEMENTARY
RESTROOMS
UPGRADES**

BID SET 3.13.2023



MAIN ELEMENTARY - KEY PLAN

Project number	202301.0010
Date	02/15/2023
Drawn by	Author
Checked by	Checker

A101

Scale

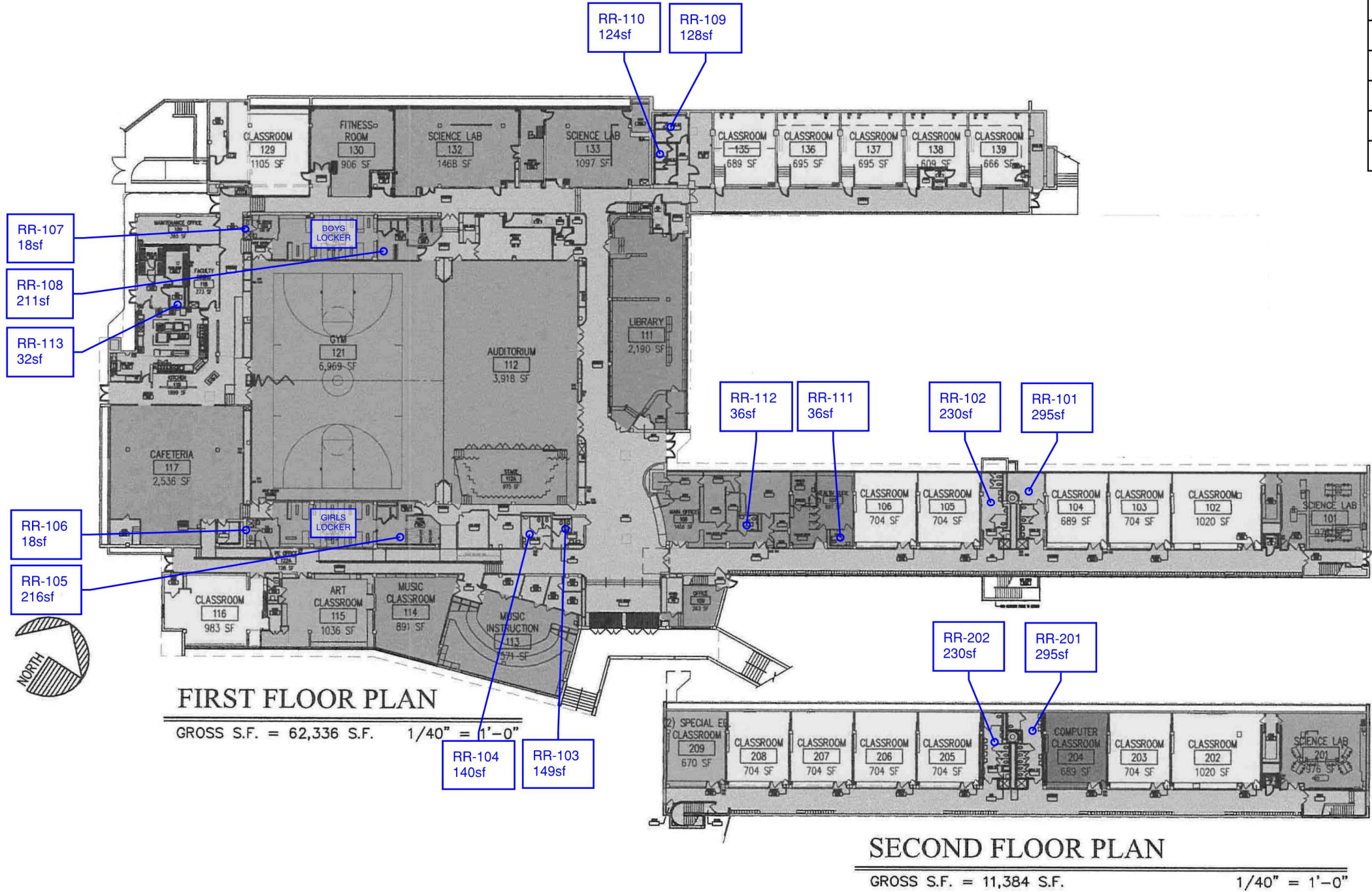
GENERAL NOTES:

- 1. REFER TO DETAILED SPACE SCHEDULE FOR SCOPE NOTES
- 2. CONTRACTOR TO COMPLETE EXISTING CONDITIONS VERIFICATION INFORM ENGINEER OF ANY DISCREPANCIES
- 3. REMOVE AND REINSTALL EXISTING TOILET PARTITIONS FOR FLOORING INSTALLATION. PROVIDE NEW SST BASE SHOE FOR ALL FLOOR MOUNT LOCATIONS.
- 4. CLEAN ALL WALL TILES AND GROUT. SEAL GROUT.
- 5. FLOOR EPOXY FLOOR AND BASE PREP REFER TO SEC DIV 8 FOR DETAILED PROCEDURES
- 6. PAINT DOOR TRIM ALL LOCATIONS
- 7. VERIFY LIGHT FIXTURE COUNTS AND TRIM TYPE

CONSTRUCTION SEQUENCE NOTES:

- 1. SCHOOL OPERATION HOURS ARE 7AM TO 4PM MON-FRI DURING SCHOOL YEAR
- 2. COMPLETE ALL NOISE AND DUST CREATING WORK OUTSIDE OF SCHOOL HOURS
- 3. COMPLETE NORTH WING GROUPED RESTROOMS PRIOR TO WORKING IN SOUTH WING GROUPED RESTROOMS
- 4. ADMIN AND HEALTH SUITE RR MUST BE COMPLETED OUTSIDE OF REGULAR SCHOOL YEAR

Floor	ROOM NAME	ROOM TAG	AREA (SF)
1	South Wing Girls	RR-101	295
1	South Wing Boys	RR-102	230
1	Staff Mens	RR-103	149
1	Staff Womens	RR-104	140
1	Girls Locker Room Restroom	RR-105	216
1	Staff Office RR	RR-106	18
1	Staff Office RR	RR-107	18
1	Boys Locker Room Restroom	RR-108	211
1	North Wing Boys	RR-109	128
1	North Wing Girls	RR-110	125
1	Health Suite RR	RR-111	36
1	Admin Suite RR	RR-112	36
1	Cafeteria Staff RR	RR-113	32
2	Girls Restroom	RR-201	295
2	Boys Restroom	RR-202	230



STEM
RESTROOMS
UPGRADES

BID SET 3.13.2023



STEM - KEY PLAN

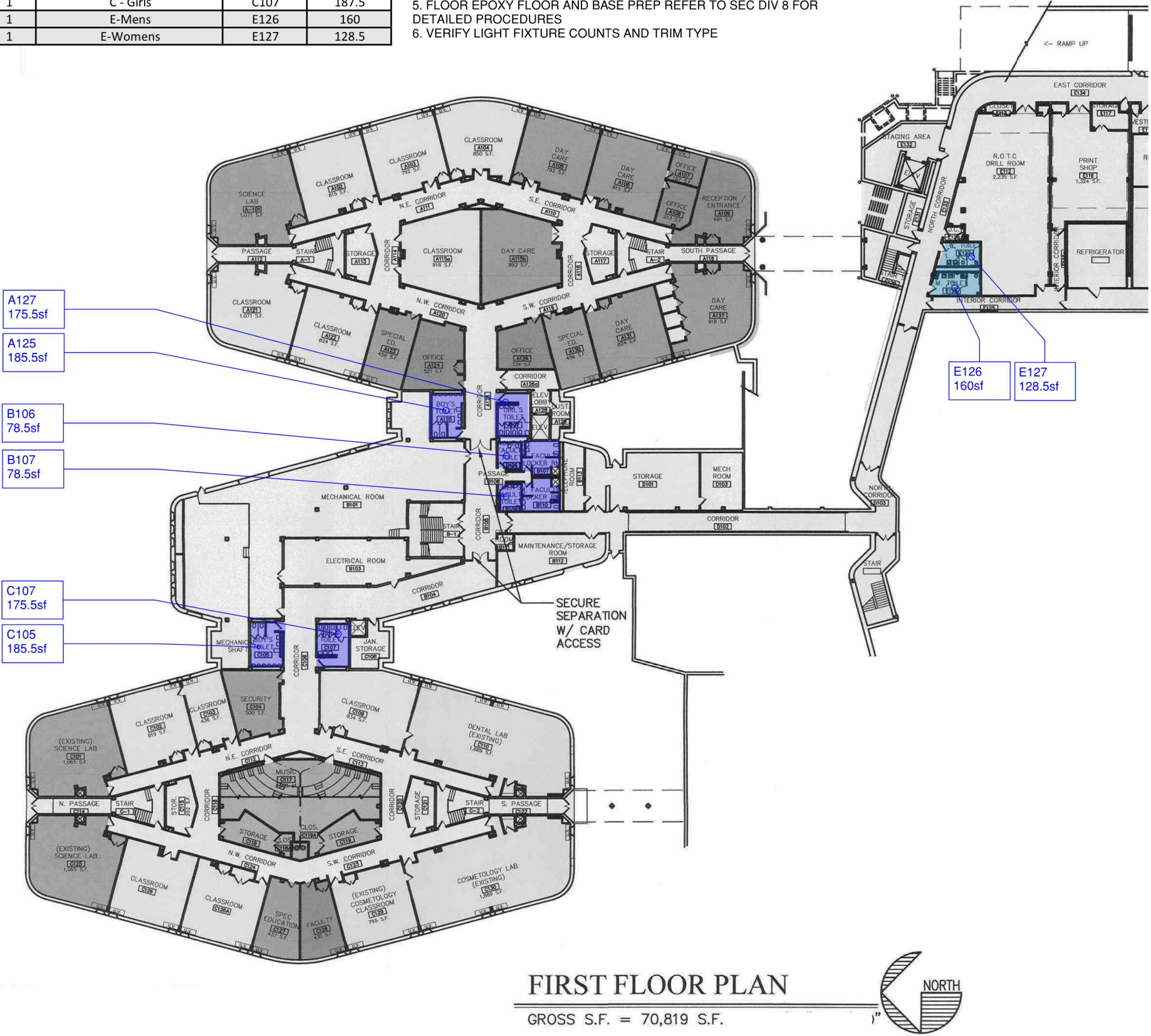
Project number	202301.0010
Date	02/15/2023
Drawn by	Author
Checked by	Checker

A102

Scale

Floor	ROOM NAME	ROOM TAG	AREA (SF)
1	A - Boys	A125	192
1	A - Girls	A127	187
1	A -Staff and Locker Womens	B106	78
1	A -Staff and Locker Mens	B107	78
1	C - Boys	C105	191.5
1	C - Girls	C107	187.5
1	E-Mens	E126	160
1	E-Womens	E127	128.5

- GENERAL NOTES:**
1. REFER TO DETAILED SPACE SCHEDULE FOR SCOPE NOTES
 2. CONTRACTOR TO COMPLETE EXISTING CONDITIONS VERIFICATION INFORM ENGINEER OF ANY DISCREPANCIES
 3. CONTRACTOR TO MEASURE FOR TOILET PARTITION SHOP DRAWINGS PREPARATION REFER TO SPEC DIV 10
 4. PATCH AND REPAIR CEILINGS AND WALLS AS NEEDED FOR NEW PAINT.
 5. FLOOR EPOXY FLOOR AND BASE PREP REFER TO SEC DIV 8 FOR DETAILED PROCEDURES
 6. VERIFY LIGHT FIXTURE COUNTS AND TRIM TYPE



- CONSTRUCTION SEQUENCE NOTES:**
1. SCHOOL OPERATION HOURS ARE 7AM TO 4PM MON-FRI DURING SCHOOL YEAR
 2. COMPLETE ALL NOISE AND DUST CREATING WORK OUTSIDE OF SCHOOL HOURS
 3. COMPLETE RESTROOM RENOVATIONS IN STACKS. RESTROOM SETS MUST BE PUNCHLIST COMPLETED AND SIGNED OFF BY OWNER PRIOR TO COMMENCING NEXT SET.
 4. CONTRACTOR MAY PROPOSE ALTERNATE PHASING.
 5. ON EACH LEVEL AT LEAST ONE STUDENT RESTROOM SET MUST BE AVAILABLE AT ALL TIMES.
 6. ONE SET OF STAFF RESTROOMS MUST BE AVAILABLE FOR USE ON SAME OR ADJACENT LEVEL
 7. ADMIN SUITE RESTROOMS MUST BE FULLY COMPLETED OUTSIDE OF MAIN SCHOOL YEAR.

- CONSTRUCTION SEQUENCE:**
- PHASE A: SUMMER 2023 JUNE 25 TO AUG 28
- LEVEL 3 - D ADMIN, HEALTH SUITE, LOCKER ROOMS, CAFETERIA
 - LEVEL 2 - ALL E BLOCK RESTROOMS
- PHASE B: NORMAL SCHOOL
- ALL LEVELS - A- SIDE STUDENTS
 - ALL LEVELS - C- SIDE STUDENTS
 - LEVEL 3 - REMAINING E SIDE- STUDENTS AND DRESSING
 - LEVEL 3 C STAFF
 - LEVEL 2 B LOADING AND B STAFF/LOCKER
 - LEVEL 3 C STAFF
 - LEVEL 4 B STAFF
 - LEVEL 5 B STAFF



**HIGH SCHOOL
RESTROOMS
UPGRADES**
BID SET 3.13.2023



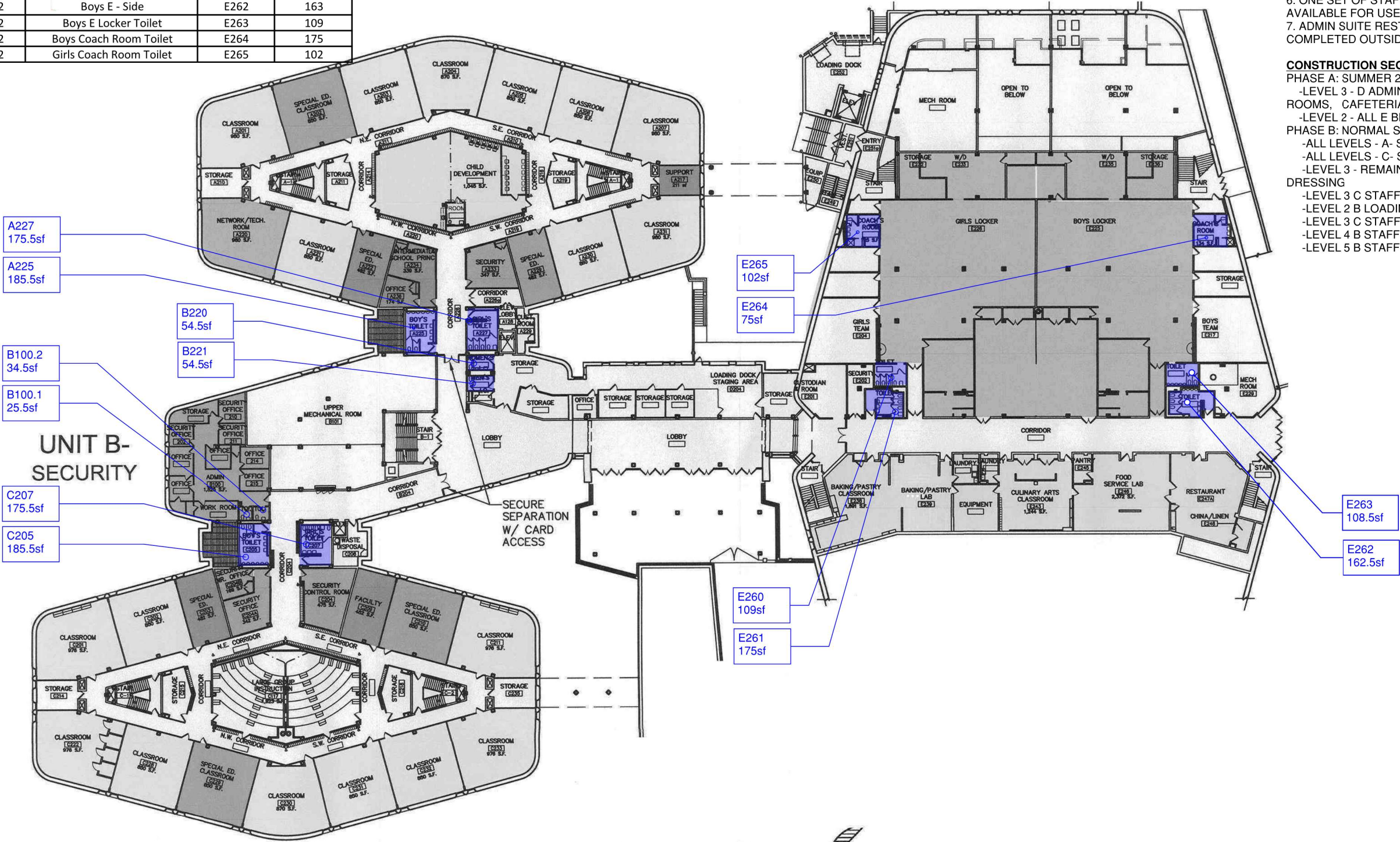
HIGH SCHOOL - 1ST FLOOR - KEY PLAN			
Project number	202301.0010	A103	Scale
Date	02/15/2023		
Drawn by	Author		
Checked by	Checker		

Floor	ROOM NAME	ROOM TAG	AREA (SF)
2	Boys A-Side	A225	192
2	Girls A-Side	A227	187.5
2	Staff Mens	B100.1	25
2	Staff Womens	B100.2	34
2	Staff Womens Loading	B220	53.5
2	Staff Mens Loading	B221	53.5
2	Boys C-Side	C205	191.5
2	Girls C-Side	C207	187
2	Girls E Locker Toilet	E260	109
2	Girls E - Side	E261	175
2	Boys E - Side	E262	163
2	Boys E Locker Toilet	E263	109
2	Boys Coach Room Toilet	E264	175
2	Girls Coach Room Toilet	E265	102

GENERAL NOTES:
1. REFER TO DETAILED SPACE SCHEDULE FOR SCOPE NOTES
2. CONTRACTOR TO COMPLETE EXISTING CONDITIONS VERIFICATION INFORM ENGINEER OF ANY DISCREPANCIES
3. CONTRACTOR TO MEASURE FOR TOILET PARTITION SHOP DRAWINGS PREPARATION REFER TO SPEC DIV 10
4. PATCH AND REPAIR CEILINGS AND WALLS AS NEEDED FOR NEW PAINT.
5. FLOOR EPOXY FLOOR AND BASE PREP REFER TO SEC DIV 8 FOR DETAILED PROCEDURES
6. VERIFY LIGHT FIXTURE COUNTS AND TRIM TYPE

CONSTRUCTION SEQUENCE NOTES:
1. SCHOOL OPERATION HOURS ARE 7AM TO 4PM MON-FRI DURING SCHOOL YEAR
2. COMPLETE ALL NOISE AND DUST CREATING WORK OUTSIDE OF SCHOOL HOURS
3. COMPLETE RESTROOM RENOVATIONS IN STACKS. RESTROOM SETS MUST BE PUNCHLIST COMPLETED AND SIGNED OFF BY OWNER PRIOR TO COMMENCING NEXT SET.
4. CONTRACTOR MAY PROPOSE ALTERNATE PHASING.
5. ON EACH LEVEL AT LEAST ONE STUDENT RESTROOM SET MUST BE AVAILABLE AT ALL TIMES.
6. ONE SET OF STAFF RESTROOMS MUST BE AVAILABLE FOR USE ON SAME OR ADJACENT LEVEL
7. ADMIN SUITE RESTROOMS MUST BE FULLY COMPLETED OUTSIDE OF MAIN SCHOOL YEAR.

CONSTRUCTION SEQUENCE:
PHASE A: SUMMER 2023 JUNE 25 TO AUG 28
-LEVEL 3 - D ADMIN, HEALTH SUITE, LOCKER ROOMS, CAFETERIA
-LEVEL 2 - ALL E BLOCK RESTROOMS
PHASE B: NORMAL SCHOOL
-ALL LEVELS - A- SIDE STUDENTS
-ALL LEVELS - C- SIDE STUDENTS
-LEVEL 3 - REMAINING E SIDE- STUDENTS AND DRESSING
-LEVEL 3 C STAFF
-LEVEL 2 B LOADING AND B STAFF/LOCKER
-LEVEL 3 C STAFF
-LEVEL 4 B STAFF
-LEVEL 5 B STAFF



SECOND FLOOR PLAN

GROSS S.F. = 96,240 S.F.



HIGH SCHOOL
RESTROOMS
UPGRADES

BID SET 3.13.2023



HIGH SCHOOL - 2ND FLOOR - KEY PLAN		
Project number	202301.0010	A104
Date	02/15/2023	
Drawn by	Author	
Checked by	Checker	

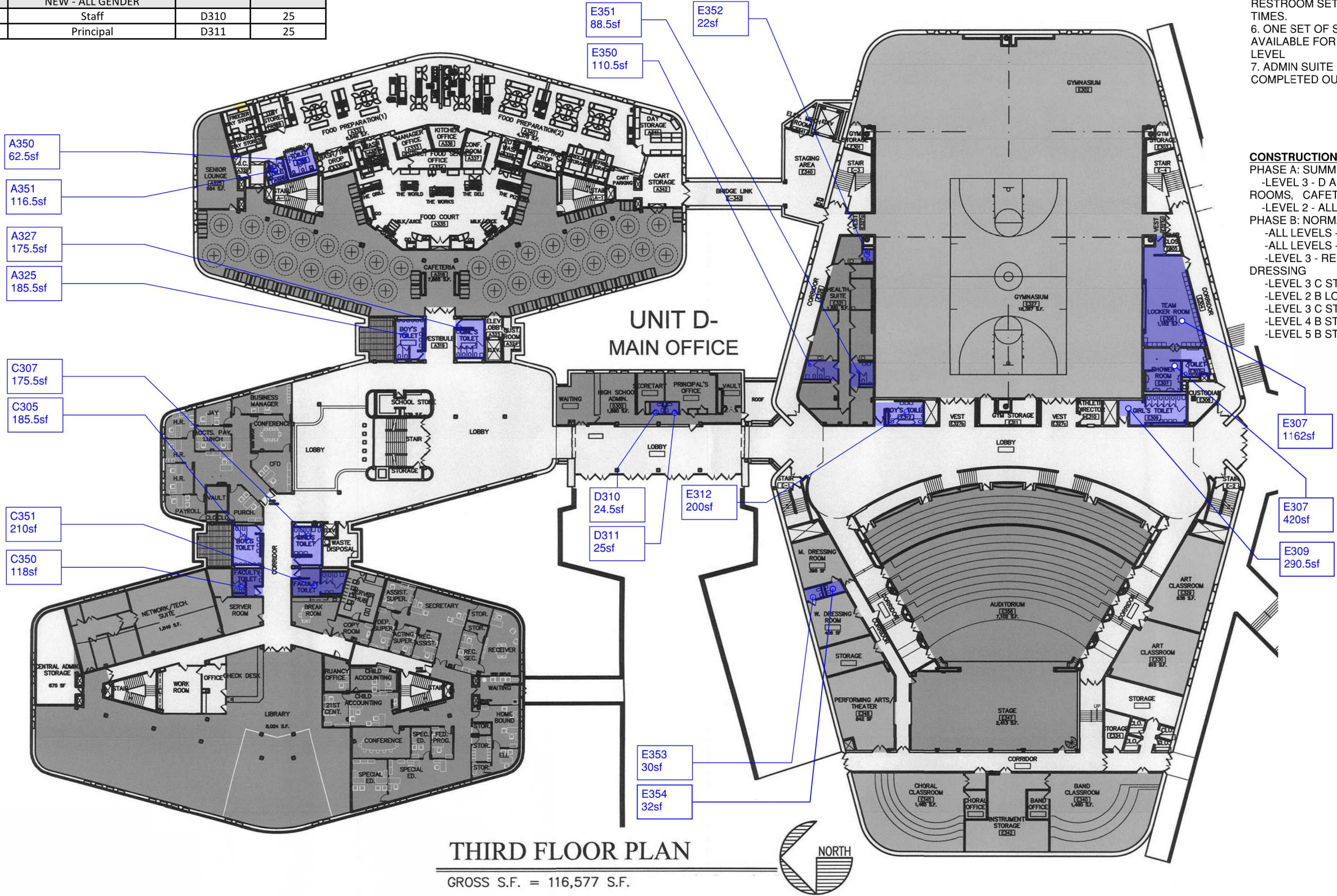
Floor	ROOM NAME	ROOM TAG	AREA (SF)
3	Cafeterial Staff Womens	A323	116.5
3	Cafeterial Staff Mens	A324	63
3	Boys A-Side	A325	183.5
3	Girls A-Side	A327	180.5
3	Boys C-Side	C305	185.5
3	Girls C-Side	C307	175
3	EX - Staff Mens	C350	116.5
3	NEW - ALL GENDER		
3	EX - Staff Womens	C351	209
3	NEW - ALL GENDER		
3	Staff	D310	25
3	Principal	D311	25

Floor	ROOM NAME	ROOM TAG	AREA (SF)
3	Locker Room	E306	1162
3	Team Restroom and Showers	E307	117
3	Girls Restroom	E309	290
3	Boys Restroom	E312	200
3	Health Suite Womens	E350	110
3	Health Suite Boys	E351	88.5
3	Health Suite Staff	E352	22
3	Dressing room Womens	E353	30
3	Dressing Room Mens	E354	32

- GENERAL NOTES:**
1. REFER TO DETAILED SPACE SCHEDULE FOR SCOPE NOTES
 2. CONTRACTOR TO COMPLETE EXISTING CONDITIONS VERIFICATION INFORM ENGINEER OF ANY DISCREPANCIES
 3. CONTRACTOR TO MEASURE FOR TOILET PARTITION SHOP DRAWINGS PREPARATION REFER TO SPEC DIV 10
 4. PATCH AND REPAIR CEILINGS AND WALLS AS NEEDED FOR NEW PAINT.
 5. FLOOR EPOXY FLOOR AND BASE PREP REFER TO SEC DIV 8 FOR DETAILED PROCEDURES
 6. VERIFY LIGHT FIXTURE COUNTS AND TRIM TYPE

- CONSTRUCTION SEQUENCE NOTES:**
1. SCHOOL OPERATION HOURS ARE 7AM TO 4PM MON-FRI DURING SCHOOL YEAR
 2. COMPLETE ALL NOISE AND DUST CREATING WORK OUTSIDE OF SCHOOL HOURS
 3. COMPLETE RESTROOM RENOVATIONS IN STACKS. RESTROOM SETS MUST BE PUNCHLIST COMPLETED AND SIGNED OFF BY OWNER PRIOR TO COMMENCING NEXT SET.
 4. CONTRACTOR MAY PROPOSE ALTERNATE PHASING.
 5. ON EACH LEVEL AT LEAST ONE STUDENT RESTROOM SET MUST BE AVAILABLE AT ALL TIMES.
 6. ONE SET OF STAFF RESTROOMS MUST BE AVAILABLE FOR USE ON SAME OR ADJACENT LEVEL
 7. ADMIN SUITE RESTROOMS MUST BE FULLY COMPLETED OUTSIDE OF MAIN SCHOOL YEAR.

- CONSTRUCTION SEQUENCE:**
- PHASE A: SUMMER 2023 JUNE 25 TO AUG 28
- LEVEL 3 - D ADMIN, HEALTH SUITE, LOCKER ROOMS, CAFETERIA
 - LEVEL 2 - ALL E BLOCK RESTROOMS
- PHASE B: NORMAL SCHOOL
- ALL LEVELS - A- SIDE STUDENTS
 - ALL LEVELS - C- SIDE STUDENTS
 - LEVEL 3 - REMAINING E SIDE- STUDENTS AND DRESSING
 - LEVEL 3 C STAFF
 - LEVEL 2 B LOADING AND B STAFF/LOCKER
 - LEVEL 3 C STAFF
 - LEVEL 4 B STAFF
 - LEVEL 5 B STAFF



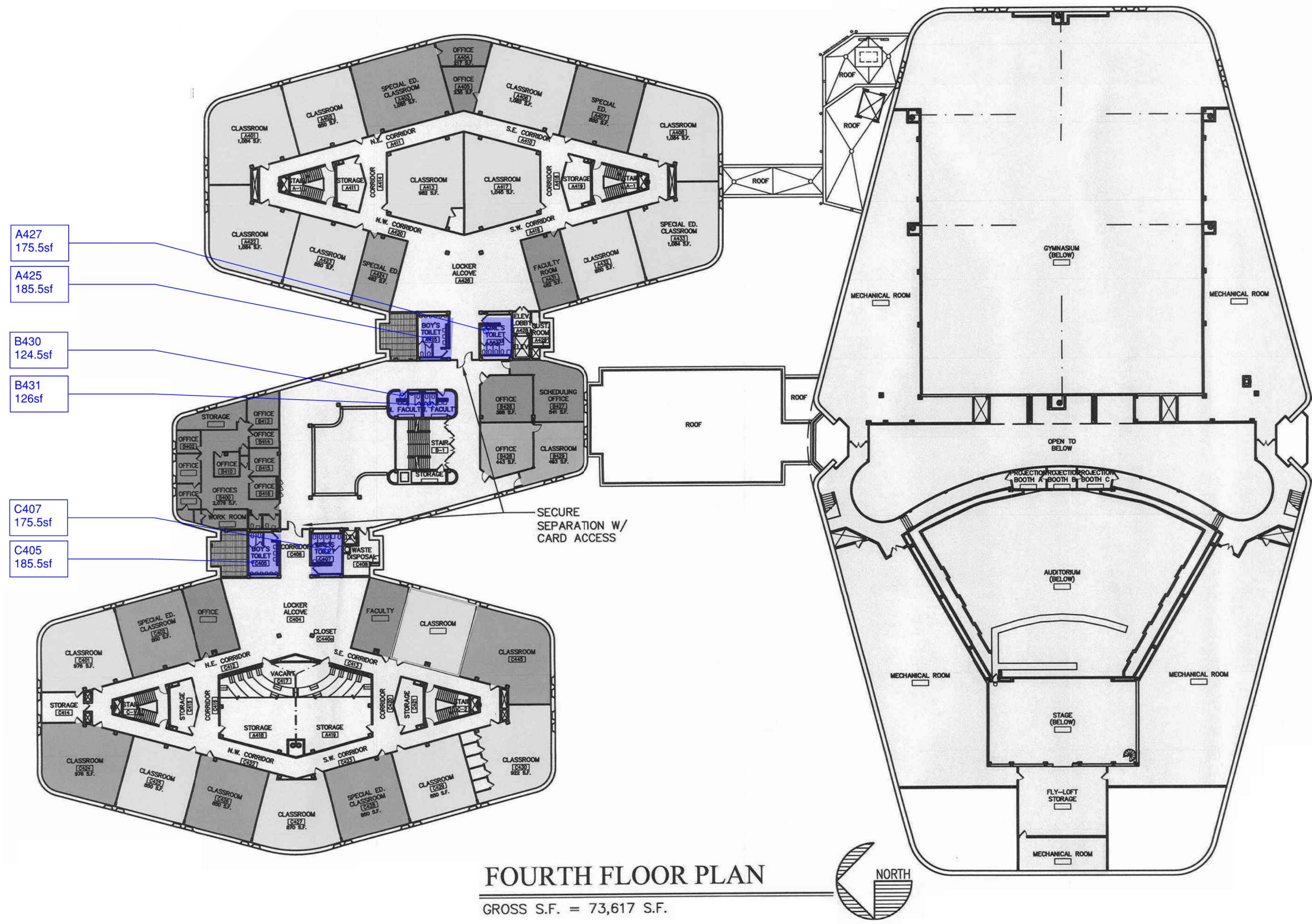
**HIGH SCHOOL
RESTROOMS
UPGRADES**
BID SET 3.13.2023



HIGH SCHOOL - 3RD FLOOR - KEY PLAN			
Project number	202301.0010	A105	Scale
Date	02/15/2023		
Drawn by	Author	Scale	Scale
Checked by	Checker		

Floor	ROOM NAME	ROOM TAG	AREA (SF)
4	Boys A-Side	A425	183.5
4	Girls A-Side	A457	180.5
4	Staff Mens	B430	125
4	Staff Womens	B431	125
4	Boys C-Side	C405	185
4	Girls C-Side	C407	175

- GENERAL NOTES:**
- 1. REFER TO DETAILED SPACE SCHEDULE FOR SCOPE NOTES
 - 2. CONTRACTOR TO COMPLETE EXISTING CONDITIONS VERIFICATION INFORM ENGINEER OF ANY DISCREPANCIES
 - 3. CONTRACTOR TO MEASURE FOR TOILET PARTITION SHOP DRAWINGS PREPARATION REFER TO SPEC DIV 10
 - 4. PATCH AND REPAIR CEILINGS AND WALLS AS NEEDED FOR NEW PAINT.
 - 5. FLOOR EPOXY FLOOR AND BASE PREP REFER TO SEC DIV 8 FOR DETAILED PROCEDURES
 - 6. VERIFY LIGHT FIXTURE COUNTS AND TRIM TYPE



FOURTH FLOOR PLAN
GROSS S.F. = 73,617 S.F.

- CONSTRUCTION SEQUENCE NOTES:**
- 1. SCHOOL OPERATION HOURS ARE 7AM TO 4PM MON-FRI DURING SCHOOL YEAR
 - 2. COMPLETE ALL NOISE AND DUST CREATING WORK OUTSIDE OF SCHOOL HOURS
 - 3. COMPLETE RESTROOM RENOVATIONS IN STACKS. RESTROOM SETS MUST BE PUNCHLIST COMPLETED AND SIGNED OFF BY OWNER PRIOR TO COMMENCING NEXT SET.
 - 4. CONTRACTOR MAY PROPOSE ALTERNATE PHASING.
 - 5. ON EACH LEVEL AT LEAST ONE STUDENT RESTROOM SET MUST BE AVAILABLE AT ALL TIMES.
 - 6. ONE SET OF STAFF RESTROOMS MUST BE AVAILABLE FOR USE ON SAME OR ADJACENT LEVEL
 - 7. ADMIN SUITE RESTROOMS MUST BE FULLY COMPLETED OUTSIDE OF MAIN SCHOOL YEAR.

- CONSTRUCTION SEQUENCE:**
- PHASE A: SUMMER 2023 JUNE 25 TO AUG 28
- LEVEL 3 - D ADMIN, HEALTH SUITE, LOCKER ROOMS, CAFETERIA
 - LEVEL 2 - ALL E BLOCK RESTROOMS
- PHASE B: NORMAL SCHOOL
- ALL LEVELS - A- SIDE STUDENTS
 - ALL LEVELS - C- SIDE STUDENTS
 - LEVEL 3 - REMAINING E SIDE- STUDENTS AND DRESSING
 - LEVEL 3 C STAFF
 - LEVEL 2 B LOADING AND B STAFF/LOCKER
 - LEVEL 3 C STAFF
 - LEVEL 4 B STAFF
 - LEVEL 5 B STAFF



**HIGH SCHOOL
RESTROOMS
UPGRADES**
BID SET 3.13.2023



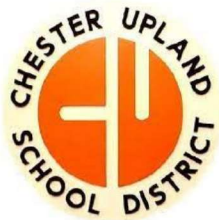
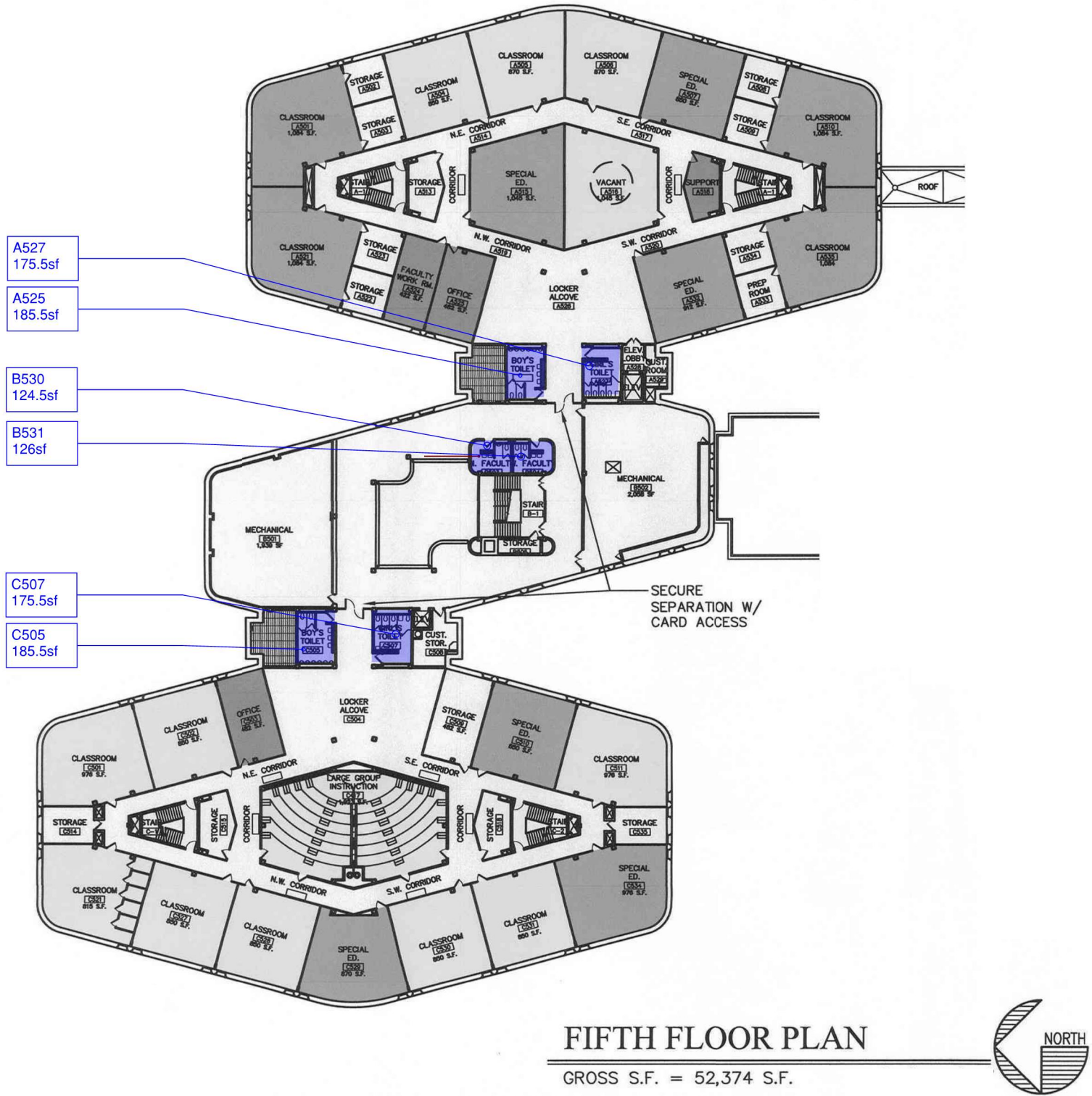
HIGH SCHOOL - 4TH FLOOR - KEY PLAN		
Project number	202301.0010	A106
Date	02/15/2023	
Drawn by	Author	Scale
Checked by	Checker	

Floor	ROOM NAME	ROOM TAG	AREA (SF)
5	Boys A-Side	A525	183.5
5	Girls A-Side	A527	180.5
5	Staff Mens	B530	125
5	Staff Womens	B531	125
5	Boys C-Side	C505	185
5	Girls C-Side	C507	175

- GENERAL NOTES:**
1. REFER TO DETAILED SPACE SCHEDULE FOR SCOPE NOTES
 2. CONTRACTOR TO COMPLETE EXISTING CONDITIONS VERIFICATION INFORM ENGINEER OF ANY DISCREPANCIES
 3. CONTRACTOR TO MEASURE FOR TOILET PARTITION SHOP DRAWINGS PREPARATION REFER TO SPEC DIV 10
 4. PATCH AND REPAIR CEILINGS AND WALLS AS NEEDED FOR NEW PAINT.
 5. FLOOR EPOXY FLOOR AND BASE PREP REFER TO SEC DIV 8 FOR DETAILED PROCEDURES
 6. VERIFY LIGHT FIXTURE COUNTS AND TRIM TYPE

- CONSTRUCTION SEQUENCE NOTES:**
1. SCHOOL OPERATION HOURS ARE 7AM TO 4PM MON-FRI DURING SCHOOL YEAR
 2. COMPLETE ALL NOISE AND DUST CREATING WORK OUTSIDE OF SCHOOL HOURS
 3. COMPLETE RESTROOM RENOVATIONS IN STACKS. RESTROOM SETS MUST BE PUNCHLIST COMPLETED AND SIGNED OFF BY OWNER PRIOR TO COMMENCING NEXT SET.
 4. CONTRACTOR MAY PROPOSE ALTERNATE PHASING.
 5. ON EACH LEVEL AT LEAST ONE STUDENT RESTROOM SET MUST BE AVAILABLE AT ALL TIMES.
 6. ONE SET OF STAFF RESTROOMS MUST BE AVAILABLE FOR USE ON SAME OR ADJACENT LEVEL
 7. ADMIN SUITE RESTROOMS MUST BE FULLY COMPLETED OUTSIDE OF MAIN SCHOOL YEAR.

- CONSTRUCTION SEQUENCE:**
- PHASE A: SUMMER 2023 JUNE 25 TO AUG 28
- LEVEL 3 - D ADMIN, HEALTH SUITE, LOCKER ROOMS, CAFETERIA
 - LEVEL 2 - ALL E BLOCK RESTROOMS
- PHASE B: NORMAL SCHOOL
- ALL LEVELS - A- SIDE STUDENTS
 - ALL LEVELS - C- SIDE STUDENTS
 - LEVEL 3 - REMAINING E SIDE- STUDENTS AND DRESSING
 - LEVEL 3 C STAFF
 - LEVEL 2 B LOADING AND B STAFF/LOCKER
 - LEVEL 3 C STAFF
 - LEVEL 4 B STAFF
 - LEVEL 5 B STAFF



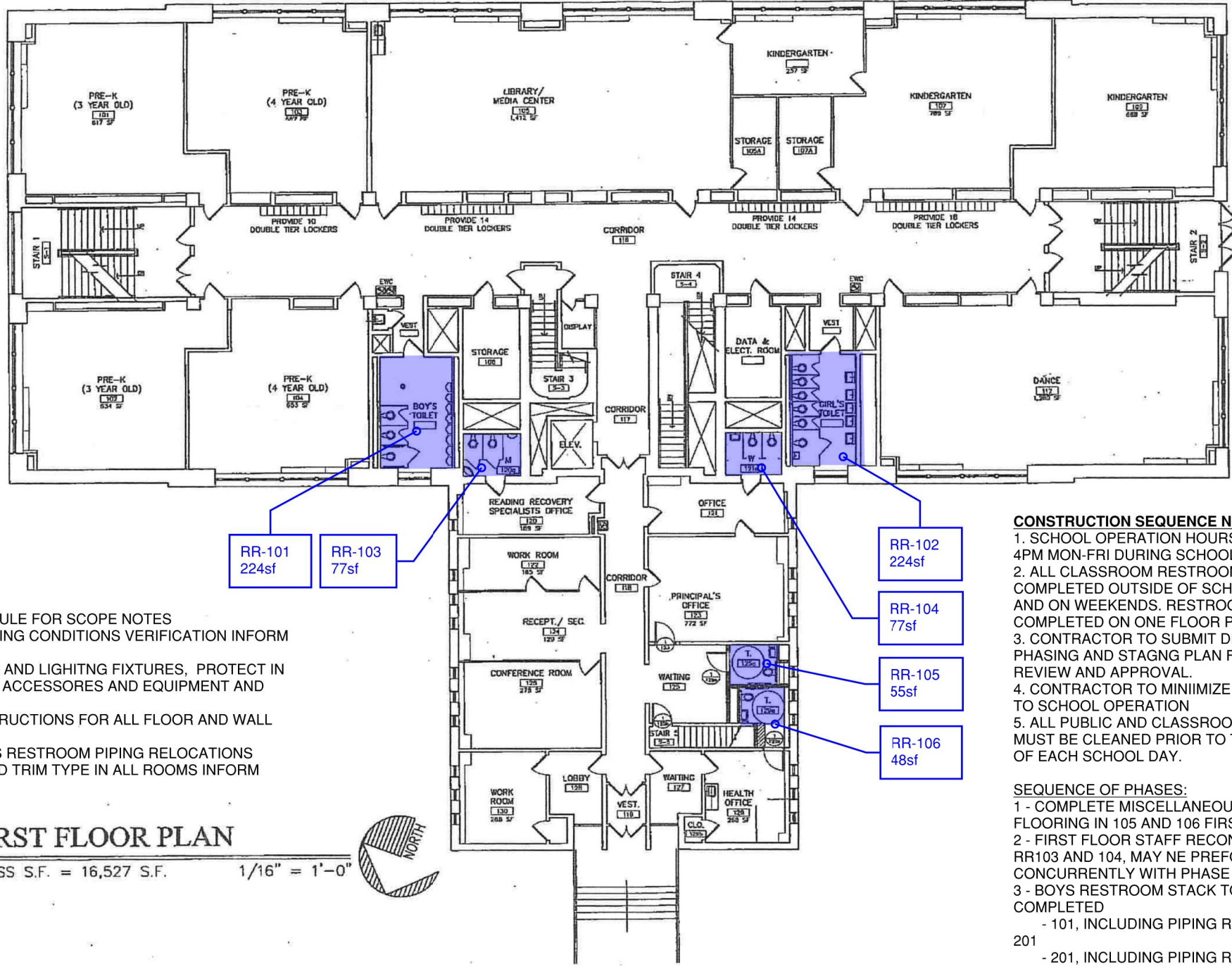
HIGH SCHOOL RESTROOMS UPGRADES

BID SET 3.13.2023



HIGH SCHOOL - 5TH FLOOR - KEY PLAN		
Project number	202301.0010	A170
Date	02/15/2023	
Drawn by	Author	
Checked by	Checker	
		Scale

Floor	ROOM NAME	ROOM TAG	AREA (SF)
1	Health Suite	RR-106	48
1	Principals Office RR	RR-105	55
1	Staff RR	RR-103	77
1	Staff RR	RR-104	77
1	Group Boys	RR-101	224
1	Group Girls	RR-102	224



- GENERAL NOTES:**
1. REFER TO DETAILED SPACE SCHEDULE FOR SCOPE NOTES
 2. CONTRACTOR TO COMPLETE EXISTING CONDITIONS VERIFICATION INFORM ENGINEER OF ANY DISCREPANCIES
 3. REMOVE ACOUSTIC CEILING PANELS AND LIGHTING FIXTURES, PROTECT IN PLACE ALL OTHER CEILING MOUNTED ACCESSORIES AND EQUIPMENT AND REINSTALL IN NEW CEILING PANELS.
 5. REFER TO MANUFACTURERS INSTRUCTIONS FOR ALL FLOOR AND WALL SUBSTATE PREPARATION.
 6. REFER TO ALLOWANCE 1 FOR BOYS RESTROOM PIPING RELOCATIONS
 7. VERIFY LIGHT FIXTURE COUNTS AND TRIM TYPE IN ALL ROOMS INFORM ENGINEER OF ANY DISCREPANCIES

FIRST FLOOR PLAN

GROSS S.F. = 16,527 S.F. 1/16" = 1'-0"

- CONSTRUCTION SEQUENCE NOTES:**
1. SCHOOL OPERATION HOURS ARE 7AM TO 4PM MON-FRI DURING SCHOOL YEAR
 2. ALL CLASSROOM RESTROOMS MUST BE COMPLETED OUTSIDE OF SCHOOL HOURS AND ON WEEKENDS. RESTROOMS MAY BE COMPLETED ON ONE FLOOR PER PHASE.
 3. CONTRACTOR TO SUBMIT DETAILED PHASING AND STAGING PLAN FOR CUSD REVIEW AND APPROVAL.
 4. CONTRACTOR TO MINIMIZE DISRUPTION TO SCHOOL OPERATION
 5. ALL PUBLIC AND CLASSROOM SPACES MUST BE CLEANED PRIOR TO THE BEGINNING OF EACH SCHOOL DAY.

- SEQUENCE OF PHASES:**
- 1 - COMPLETE MISCELLANEOUS WORK AND FLOORING IN 105 AND 106 FIRST
 - 2 - FIRST FLOOR STAFF RECONFIGURATIONS RR103 AND 104, MAY BE PERFORMED CONCURRENTLY WITH PHASE 3.
 - 3 - BOYS RESTROOM STACK TO BE COMPLETED
 - 101, INCLUDING PIPING REROUTING FOR 201
 - 201, INCLUDING PIPING REROUTING FOR 301
 - 301.
 - 4 - GIRLS RESTROOM STACK TO BE COMPLETED 101, 102, 103

EACH PHASE TO BE PUNCHLISTED PRIOR TO COMMENCING NEXT RESTROOM PHASE



**CUSA
ELEMENTARY
RESTROOMS
UPGRADES**

BID SET 3.13.2023



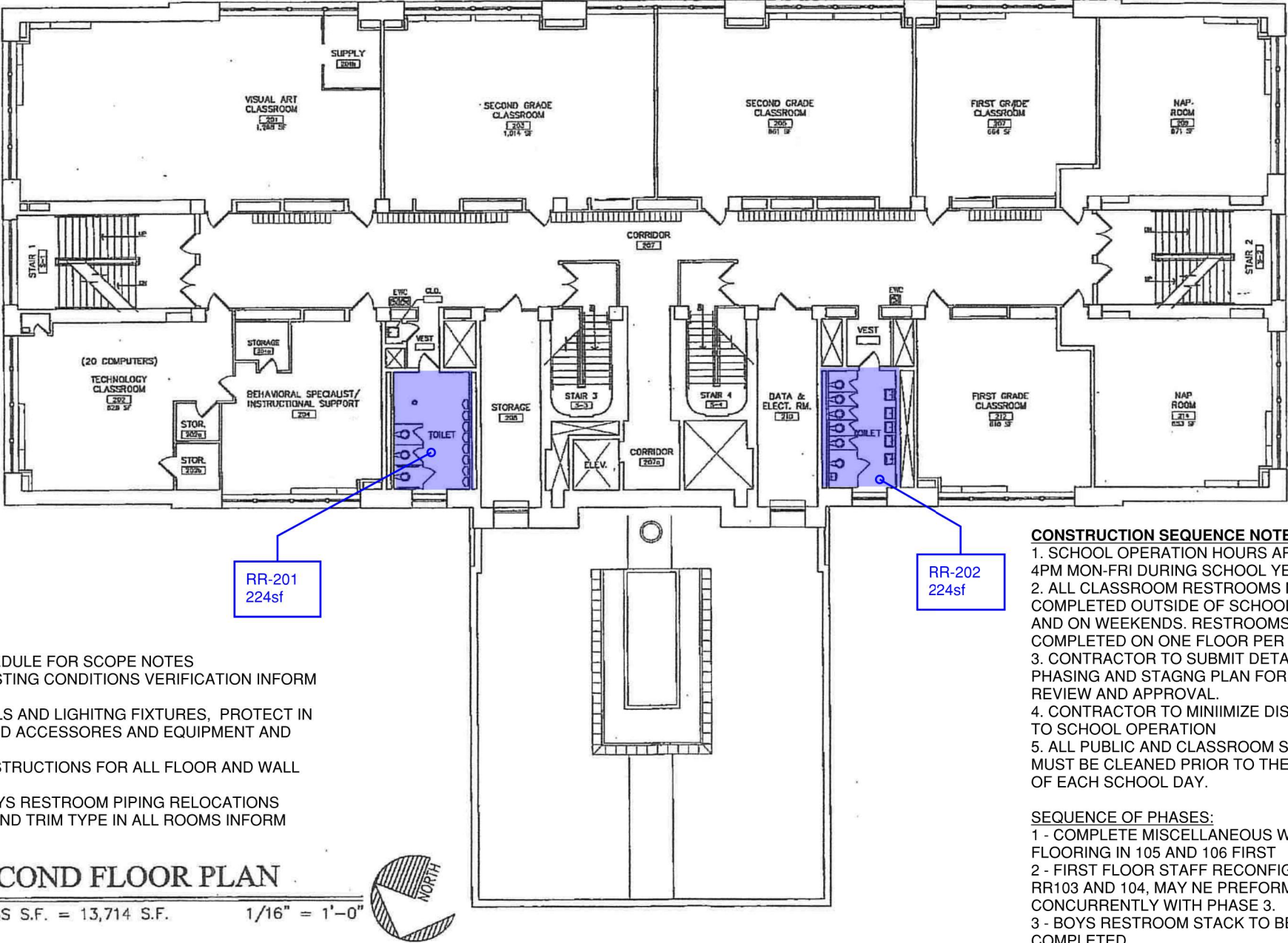
CUSA ELEMENTARY 1ST FL - KEY PLAN

Project number	202301.0010
Date	02/15/2023
Drawn by	Author
Checked by	Checker

A108

Scale

Floor	ROOM NAME	ROOM TAG	AREA (SF)
2	Group Boys	RR-201	224
2	Group Girls	RR-202	224



- GENERAL NOTES:**
- 1. REFER TO DETAILED SPACE SCHEDULE FOR SCOPE NOTES
 - 2. CONTRACTOR TO COMPLETE EXISTING CONDITIONS VERIFICATION INFORM ENGINEER OF ANY DISCREPANCIES
 - 3. REMOVE ACOUSTIC CEILING PANELS AND LIGHTING FIXTURES, PROTECT IN PLACE ALL OTHER CEILING MOUNTED ACCESSORIES AND EQUIPMENT AND REINSTALL IN NEW CEILING PANELS.
 - 5. REFER TO MANUFACTURERS INSTRUCTIONS FOR ALL FLOOR AND WALL SUBSTRATE PREPARATION.
 - 6. REFER TO ALLOWANCE 1 FOR BOYS RESTROOM PIPING RELOCATIONS
 - 7. VERIFY LIGHT FIXTURE COUNTS AND TRIM TYPE IN ALL ROOMS INFORM ENGINEER OF ANY DISCREPANCIES

SECOND FLOOR PLAN

GROSS S.F. = 13,714 S.F. 1/16" = 1'-0"

- CONSTRUCTION SEQUENCE NOTES:**
- 1. SCHOOL OPERATION HOURS ARE 7AM TO 4PM MON-FRI DURING SCHOOL YEAR
 - 2. ALL CLASSROOM RESTROOMS MUST BE COMPLETED OUTSIDE OF SCHOOL HOURS AND ON WEEKENDS. RESTROOMS MAY BE COMPLETED ON ONE FLOOR PER PHASE.
 - 3. CONTRACTOR TO SUBMIT DETAILED PHASING AND STAGING PLAN FOR CUSD REVIEW AND APPROVAL.
 - 4. CONTRACTOR TO MINIMIZE DISRUPTION TO SCHOOL OPERATION
 - 5. ALL PUBLIC AND CLASSROOM SPACES MUST BE CLEANED PRIOR TO THE BEGINNING OF EACH SCHOOL DAY.

- SEQUENCE OF PHASES:**
- 1 - COMPLETE MISCELLANEOUS WORK AND FLOORING IN 105 AND 106 FIRST
 - 2 - FIRST FLOOR STAFF RECONFIGURATIONS RR103 AND 104, MAY BE PERFORMED CONCURRENTLY WITH PHASE 3.
 - 3 - BOYS RESTROOM STACK TO BE COMPLETED
 - 101, INCLUDING PIPING REROUTING FOR 201
 - 201, INCLUDING PIPING REROUTING FOR 301
 - 301.
 - 4 - GIRLS RESTROOM STACK TO BE COMPLETED 101, 102, 103

EACH PHASE TO BE PUNCHLISTED PRIOR TO COMMENCING NEXT RESTROOM PHASE



**CUSA
ELEMENTARY
RESTROOMS
UPGRADES**

BID SET 3.13.2023



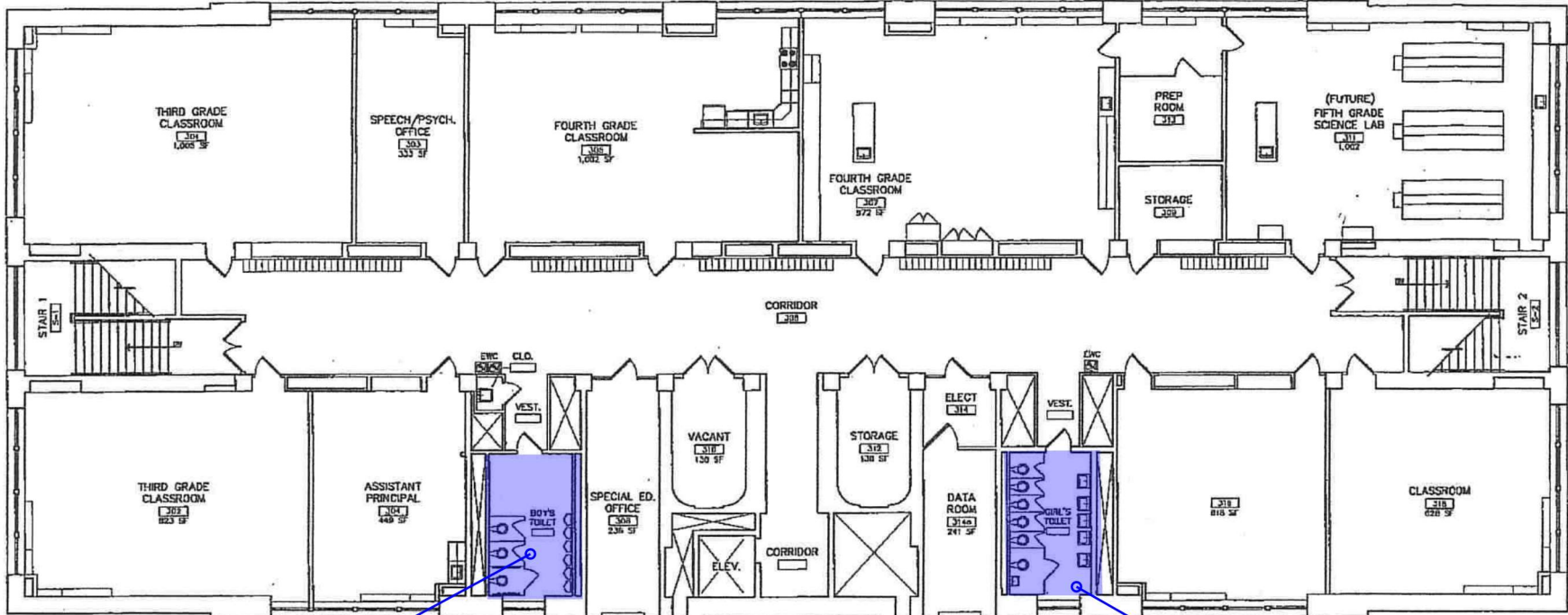
CUSA ELEMENTARY 2ND FL - KEY PLAN

Project number	202301.0010
Date	02/15/2023
Drawn by	Author
Checked by	Checker

A109

Scale

Floor	ROOM NAME	ROOM TAG	AREA (SF)
3	Group Boys	RR-301	224
3	Group Girls	RR-302	224



- GENERAL NOTES:**
- 1. REFER TO DETAILED SPACE SCHEDULE FOR SCOPE NOTES
 - 2. CONTRACTOR TO COMPLETE EXISTING CONDITIONS VERIFICATION INFORM ENGINEER OF ANY DISCREPANCIES
 - 3. REMOVE ACOUSTIC CEILING PANELS AND LIGHTING FIXTURES, PROTECT IN PLACE ALL OTHER CEILING MOUNTED ACCESSORIES AND EQUIPMENT AND REINSTALL IN NEW CEILING PANELS.
 - 5. REFER TO MANUFACTURERS INSTRUCTIONS FOR ALL FLOOR AND WALL SUBSTRATE PREPARATION.
 - 6. REFER TO ALLOWANCE 1 FOR BOYS RESTROOM PIPING RELOCATIONS
 - 7. VERIFY LIGHT FIXTURE COUNTS AND TRIM TYPE IN ALL ROOMS INFORM ENGINEER OF ANY DISCREPANCIES

THIRD FLOOR PLAN
GROSS S.F. = 13,714 S.F. 1/16" = 1'-0"



- CONSTRUCTION SEQUENCE NOTES:**
- 1. SCHOOL OPERATION HOURS ARE 7AM TO 4PM MON-FRI DURING SCHOOL YEAR
 - 2. ALL CLASSROOM RESTROOMS MUST BE COMPLETED OUTSIDE OF SCHOOL HOURS AND ON WEEKENDS. RESTROOMS MAY BE COMPLETED ON ONE FLOOR PER PHASE.
 - 3. CONTRACTOR TO SUBMIT DETAILED PHASING AND STAGING PLAN FOR CUSD REVIEW AND APPROVAL.
 - 4. CONTRACTOR TO MINIMIZE DISRUPTION TO SCHOOL OPERATION
 - 5. ALL PUBLIC AND CLASSROOM SPACES MUST BE CLEANED PRIOR TO THE BEGINNING OF EACH SCHOOL DAY.

- SEQUENCE OF PHASES:**
- 1 - COMPLETE MISCELLANEOUS WORK AND FLOORING IN 105 AND 106 FIRST
 - 2 - FIRST FLOOR STAFF RECONFIGURATIONS RR103 AND 104, MAY BE PERFORMED CONCURRENTLY WITH PHASE 3.
 - 3 - BOYS RESTROOM STACK TO BE COMPLETED
 - 101, INCLUDING PIPING REROUTING FOR 201
 - 201, INCLUDING PIPING REROUTING FOR 301
 - 301.
 - 4 - GIRLS RESTROOM STACK TO BE COMPLETED 101, 102, 103

EACH PHASE TO BE PUNCHLISTED PRIOR TO COMMENCING NEXT RESTROOM PHASE



**CUSA
ELEMENTARY
RESTROOMS
UPGRADES**

BID SET 3.13.2023



CUSA ELEMENTARY - 3RD FL- KEY PLAN		
Project number	202301.0010	A110
Date	02/15/2023	
Drawn by	Author	Scale
Checked by	Checker	

FINISH SCHEDULE			
Finish Type	Tag	Product Specifications	Repair and Finish Notes
Ceramic Tile 09 30 13			
Existing Ceramic Tile	EX	-	Contractor to clean all existing tile and grout. Patch tile penetrations with color matching grout.
Ceramic Tile	CT-1	Basis of Design: Crossville - 6X6 Cotton	General field tile. Engineer to provide layout.
Ceramic Tile	CT-2	Basis of Design: Feature Tile Crossville - 3X12 Spruce	CUSA Grouped Restrooms: Intall feature tile color at Girls Toilet Chase walls and Boys Urinal Chase wall Main: Intall feature tile color at Sink wall Existing Height AFF
Resinous Flooring 09 67 23			
Epoxy over Existing Thinset EpoxyTerrazzo	EP1	<u>Epoxy System:</u> -Dex-O-Tex Décor Flor Primer -Cove Base Gel -Dex-O-Tex Cheminert SC Membrane at cracks -Dex-O-Tex Cheminert HD -Posi-Tred O: Color: 413 Speedway Gray -Top Coat: Clear Aero-Flor 100	<u>High School Large and Small Restrooms:</u> Mechanically prep floor and base to a clean sound substrate. Protect floor drains. Apply Primer and Cove Base, Featheredge Base over terrazzo base, terminating at first CMU grout line. Rout out cracks in substrate, and detail the crack with mebrane. Once the detail is complete, coat the entire floor with 30 mils of the membrane, tie into floor drain. Allow to cure. Apply slurry epoxy broadcast flooring with color coat, and clear finish coat. Assume 20% of restroom floor area to recieve crack detailing
Epoxy over Existing Painted Concrete	EP2	<u>Epoxy System:</u> -Dex-O-Tex Décor Flor Primer -Cove Base Gel -Dex-O-Tex Cheminert HD -Posi-Tred O: Color: 413 Speedway Gray -Top Coat: Clear Aero-Flor 100	<u>CUSA 1st Floor Staff Restrooms:</u> Mechanically prep floor and base to a clean sound substrate. Protect floor drains. Apply Primer and Cove Base, Featheredge Base over base, to new routed termination reglet. Allow to cure. Apply slurry epoxy broadcast flooring with color coat, and clear finish coat.
Urethane Existing Mosiac Tile	EP3	Urethane Concrete System: -Dex-O-Tex Tek-Crete SL-B -Quik Glaze Grout and topcoat Color: 413 Speedway Gray	<u>Main Single use restrooms and STEM Restrooms:</u> Mechanically prepare the mosaic tile, removing the glaze. Remove loose tile and clean in those areas down to the concrete substrate. Bring base up tp two existing tile courses at base. Apply Dex-O-Tex Tek-Crete SL-B with Quik Glaze grout and topcoat. Featheredge base to tie into tile grout line
Epoxy Flake Finish over new Floor Substrate	EP4	Epoxy System: -Dex-O-Tex Décor Flor Primer -Cove Base Gel -Dex-O-Tex Décor Flor Double Broadcast Color: Park City -Top Coat Sealer: Clear Aero-Flor 100	<u>Main and CUSA Elementry Grouped Restrooms:</u> Remove mosaic tile flooring and grout bed, remove tile base. Smooth and level floor for new epoxy flooring. Install Epoxy flooring sytem per manufacturers direction.
Maintenance Repainting 09 01 90.52			
CMU Wall/GWB/Plaster	P1	SW 7005 Pure White	Refer to Maintenance Painting spec for surface prep procedures. Patch and repair any damage as needed
GWB/Plaster	P2	SW 9165 -Gossamer Veil	Refer to Maintenance Painting spec for surface prep procedures. Patch and repair any damage as needed
CMU Wall	P3	SW 6634 Copper Harbor	Feature Paint High School Grouped RR - A side confirm with Engineer location and extent of feature paint
CMU Wall	P4	SW 9062 Bluebird Feather	Feature Paint High School Grouped RR - C side confirm with Engineer location and extent of feature paint
CMU Wall	P5	SW 6487 Cloudburst	Feature Paint - TBD
CMU Wall	P6	SW 7664 Steely Gray	Feature Paint - STEM - TBD
Doors and Frame	P7	SW 7664 Steely Gray	Door and Frame Paint at all High School Doors New SST kick plate all doors
Doors and Frame	P8	SW 6682 - June Day	Main and CUSA Elementary Doors
Doors and Frame	P9	SW 9165 -Gossamer Veil	Main and CUSA Elementary Doors
Doors - HW	EX	Existing HW finish and painted trim	All spaces at STEM all door finishes to remain. Install new SST kick plate both sides
Ceilings GWP/Plaster ceiling	P10	SW 7007 Ceiling Bright White - Sherwin Williams	Refer to Maintenance Painting spec for surface prep procedures. Patch and repair any damage as needed
Acoustical Tile Ceiling 09 29 00			
Ceilings ACT	ACT	Armstrong Ceiling Solutions Ultima 2x4	All CUSA restrooms and Main Annex classroom

FIXTURE SCHEDULE			
Plumbing Fixtures	Tag	Fixture Specifications	Locations
Water Closet Floor (ch)	WCF-CH	American Standard 2282.001 Baby DeVoro™ FloWise® Flushometer Toilet Seat: #5001G.055 Baby Devoro Seat Flush valve: American Standard #6047.161.002 Manual: Top Spud	Main Elementary School Classroom Restrooms
Water Closet Wall	WCW	American Standard 3351.101 Afwall Millenium FloWise Elongated Flushometer Toilet with EverClean Seat: American Standard #5901.100 Heavy duty	
Water Closet Floor	WCF	American Standard 3341.001 Huron Back Spud Bowl with Integral Seat and EverClean. Seat: American Standard #5901.100 Heavy duty Flushometer valve: American Standard #6047.161.002 Manual: Top Spud	Main Elementary School Group Restrooms
Urinal with Flush Valve	U	American Standard 6581.001EC Maybrook Top spud with EverClean Flush Valve: Manual-Operated: American Standard # 6045.101.002	Main and CUSA Elementary School Boys Restroom
Lavatory Wall	LAV1	American Standard 9024904EC.020 Decorum Wall hung sink, no overflow, 4" centerset, enameled cast iron	All grouped restrooms at all schools, single user restrooms
Lavatory Wall - Small	LAV2	American Standard 4869.004 Regalyn wall mount sink Faucet holes at 4" enameled cast iron	Main Elementary School Classroom Restrooms and staff single user restrooms. Mount to match existing heights
Lavatory Wall - Corner	LAV3	American Standard 0451021.020 Corner Minette wall mount sink Faucet holes at 4" enameled cast iron	CUSA Mens Staff single user restrooms. Mount to match existing heights
Toilet to Remain	EX	Existing to remain, clean fixture, install new seat, in indicated in notes install flush valve. Flush Valve: Manual-Operated: American Standard # 6045.101.002	Refer to space schedule notes indicated in Notes
Faucet		6114.114.002 Monterrey Single Control Centerset Cast brass body. 0.35 gpm vandal-resistant, pressure compensating multi-laminar spray	Install at all new and existings sinks

LIGHTING SCHEDULE			
Interior Lighting - 26 51 00			
Lighting Type	Tag	Replacement Fixture Type - Spec	Locations
Ceiling Mounted - Small Restrooms	L1	Columbia Lighting -CBT LSCS ITEM# CBT22-LSCS Surface Mount Kit # SRPSMK22	
Ceiling Mounted - Grouped and Large Restrooms	L2	Columbia Lighting -CBT LSCS ITEM# CBT14-LSCS Surface Mount Kit # SRPSMK24 Flange Trim # FK14	
Troffer 2x4 Restrooms with ACT	L3	Columbia Lighting -LEPC24 ITEM# LEPC 24 - 35G LL- Blank- E -U	CUSA
Wall Mounted Small Restrooms,	L4	Columbia Lighing - CWM ITEM# CWM2-35MLSM-FRFP-EU	Small Single User Restrooms at Chester High School. Mount above Mirror
Wall Mounted XS Small Restrooms at	L5	RAB Lighting - HALV10 ITEM# HALV10L935-F-S	Classroom Restrooms and staff single user restrooms at Main elementary school Mount above mirror

ACCESSORIES			
Toilet Accessories - 10 28 00			
Item	Tag	Specification	Notes
Mirror Standard	M1	Bobrick, Model B290 (24X36)	
Mirror Small	M2	Bobrick, Model B290 (18X30)	
Paper towel	PT	Janico, Model 2802	Owner Spplied Contractor Installed
Soap Dispenser	SD	Janico Foam Dispenser #2025	Owner Spplied Contractor Installed
Toilet Tissue (Roll) Dispenser	TD	Cascades Pro Tandem C380	Owner Spplied Contractor Installed
Sanitary-Napkin Disposal Unit	SN	Bobrick, Model B-244	

Miscellaneous		Repair/Replacement scope	Location Notes
Access Panel	AP-SS	New Stainless Steel flulsh with flanged edge chase access panel. Size to suit/match existing. Flush philips head screw mounting.	High School - Various Locations - CMU wall Assume 30 in base bid
Flush Valve Access Panel	AP-FV	New Stainless Steel - High School Only - Verify size in field. Flush philips head screw mounting.	High School - Group Restrooms Replace and damaged or missing locations, confirm locations with Engineer preconstruction Assume 30 in base Bid
Finish Escutcheons	-	New circular concealed attachment SST Escucheon plates	High School - Install at missing and loose cover plates. Assume 50 items in base bid
Ptrap insulation	-	P-Trap Insulation kit, install at all ADA height LAV's	High School - Install at Assigned ADA height Lavs Assume 20 items in base bid
Panel Signage 10 14 23.16	-	New interior Panel signage- 6X9 sign Grey with White text and Braille	All Restrooms and Locker Rooms -Message schedule to be provided by Engineer

Toilet Partitions 10 21 13.13	Tag	Specification	Locations
Headrail braced, Floor Mounted Metal.	TP1	Standard Series- Powder Coated- Anti graffiti finish, Color: Dovetail Grey #828 Manufacturer: Hardian Manufacturing inc.	All High School Grouped Student restrooms
Headrail braced, Floor Mounted Metal.	TP2	Standard Series- Powder Coated Color: Linen #504, Light Grey #534 Manufacturer: Hardian Manufacturing inc.	High school Staff Grouped Restrooms,



MG Engineering

CUSD RESTROOM UPGRADES

No.	Description	Date

SCHEDULES BID SET 3.13.2023		
Project number	202301.0010	A200
Date	02/15/2023	
Drawn by	Author	
Checked by	Checker	Scale

MAIN ELEMENTARY SCHOOL

			Plumbing Scope				Lighting	Finishes Scope					Toilet Partition	Toilet Room Accessories				
ROOM NAME	ROOM TAG	AREA (SF)	WC	U	LAV	Plumbing Notes	Fixture	Door	Walls	Floor	Ceiling	Notes	Type	Accessories				
Health Suite	RR-1	25	WCF		LAV1		L4	P8	P1	EP3	P10	Remove and resintall base board heater for floor install	-	TD	PT	SD	SN	M2
Classroom 2	RR-2	13	WC-CH		LAV2		L5	P8	P1	EP3	P10	Remove and resintall base board heater for floor install	-	TD	PT	SD		M2
Classroom 3	RR-3	14.5	WC-CH		LAV2		L5	P8	P1	EP3	P10	Remove and resintall base board heater for floor install	-	TD	PT	SD		M2
Classroom 4	RR-4	14.5	WC-CH		LAV2		L5	P8	P1	EP3	P10	Remove and resintall base board heater for floor install	-	TD	PT	SD		M2
Classroom 5	RR-5	14.5	WC-CH		LAV2		L5	P8	P1	EP3	P10	Remove and resintall base board heater for floor install	-	TD	PT	SD		M2
Classroom 7	RR-7	14.5	WC-CH		LAV2		L5	P8	P1	EP3	P10	Remove and resintall base board heater for floor install	-	TD	PT	SD		M2
Classroom 8	RR-8	12	WC-CH		LAV2		L5	P8	P1	EP3	P10	Remove and resintall base board heater for floor install	-	TD	PT	SD		M2
Classroom 9	RR-9	14.5	WC-CH		LAV2		L5	P8	P1	EP3	P10	Remove and resintall base board heater for floor install	-	TD	PT	SD		M2
Classroom 10	RR-10	14.5	WC-CH		LAV2		L5	P8	P1	EP3	P10	Remove and resintall base board heater for floor install	-	TD	PT	SD		M2
Group Boys	RR-11	189	4 WCF	6 U	4 LAV1	Install all new fixtures at existing rough in locations. Remove and resintall base heater for tile installation	4 L2	P8	P1 CT-1 CT-2	EP4	P10	Remove all unused blocking from walls, fill holes. Clean and paint sills. Feature tile at urinal Chase Wall	PT-3	4 TD	2 PT	4 SD		4-M1
Group Girls	RR-12	193.5	7 WCF		4 LAV1	Install all new fixtures at existing rough in locations. Remove and resintall base heater for tile installation	3 L2	P8	P1 CT-1 CT-2	EP4	P10	Remove all unused blocking from walls, fill holes. Clean and paint sills. Feature tile at toilet Chase Wall	PT-3	7 TD	2 PT	4 SD	7 SN	4 M1
Staff Break RR	RR-13	14	WCF		LAV2		L5	P9	P1	EP3	P10		-	TD	PT	SD	SN	M2
Principals Office RR	RR-14	14.7	WCF		LAV2		L5	P9	P1	EP3	P10		-	TD	PT	SD	SN	M2
Staff Mens	RR-15	25	WCF		LAV2	Install all new fixtures at existing rough in locations. Remove and resintall base heater for tile installation	L4	P8	P1 CT-1	EP3	P10		-	TD	PT	SD		M2
Staff Womens	RR-16	25	WCF		LAV2	Install all new fixtures at existing rough in locations. Remove and resintall base heater for tile installation	L4	P8	P1 CT-1	EP3	P10		-	TD	PT	SD	SN	M2
Annex Classroom 6	RR-6	18.75	WC-CH 1		LAV2	Remove all fixtures and hot water heater. Install all new fixtures at existing rough in locations. Install new electric 2.65 gallon under sink mounted hot water heater.	L3	P8	P1 CT-1	EP2	ACT	Remove VCT flooring. Remove Damaged GWB to 2ft AFF. Install new Tile backer board and new Ceramic Tile to 6'8" Repair and level subfloor for new Epoxy. Install new ACT to maatch existing	-	TD	PT	SD		M2



MAIN - SCHEDULE		
Project number	202301.0010	A201
Date	02/15/2023	
Drawn by	Author	
Checked by	Checker	
		Scale

STEM AT SHOWALTER

SPACE DEFINITION				Plumbing Scope				Lighting Scope		Finishes Scope				Toilet Partition	Toilet Room Accessories				
Floor	ROOM NAME	ROOM TAG	AREA (SF)	WC	U	LAV	Plumbing Notes	Lights	Notes	Walls	Floor	Ceiling	Notes		Accessories				
1	South Wing Girls	RR-101	293	2 EX		2 EX	Install faucets at all existing lavs	L2		P1	EP-3	P10	Remove and reinstall existing toilet partitions. Provide new floor mount shoes.	-	2 TD	2 PT	2 SD	2 SN	-
1	South Wing Boys	RR-102	230	3 EX	2 EX	2 EX	Install faucets at all existing lavs	L2		P1	EP-3	P10	Remove and reinstall existing toilet partitions. Provide new floor mount shoes.	-	3 TD	2 PT	2 SD		-
1	Staff Mens	RR-103	149.5	2 EX		2 EX	Install faucets at all existing lavs	L2		P1	EP-3	P10		-	2 TD	2 PT	2 SD		-
1	Staff Womens	RR-104	140.5	2 EX	1 EX	2 EX	Install faucets at all existing lavs	L2		P1	EP-3	P10	Patch and repair ceilings as needed for light replacement	-	2 TD	2 PT	2 SD	2 SN	-
1	Girls Locker Room Restroom	RR-105	216	2 EX		2 EX	Install faucets at all existing lavs	L2	New lighting in restrooms only. Locker room lighting to remain	P1 P6	EP-3	P10	Paint restroom and Locker room walls. Protect existing lockers during painting. P1 to 6'8"aff, Feature paint 6'8"aff to ceiling. Flooring to restroom only. Remove and reinstall existing toilet partitions. Provide new floor mount shoes.	-	2 TD	2 PT	2 SD	2 SN	-
1	Staff Office RR	RR-106	138	1 EX		1 EX	Install faucets at all existing lavs	L1		P1	EP-3	P10		-	TD	PT	SD	SN	-
1	Staff Office RR	RR-107	126	1 EX		1 EX	Install faucets at all existing lavs	L1		P1	EP-3	P10		-	TD	PT	SD		-
1	Boys Locker Room Restroom	RR-108	211	2 EX		2 EX	Install faucets at all existing lavs. Remove selant and reseal all existing urinals	L2	New lighting in restrooms only. Locker room lighting to remain	P1 P6	EP-3	P10	Paint restroom and Locker room walls. Protect existing lockers during painting. P1 to 6'8"aff, Feature paint 6'8"aff to ceiling. Flooring to restroom only. Remove and reinstall existing toilet partitions. Provide new floor mount shoes.	-	2 TD	1 PT	2 SD	2 SN	-
1	North Boys	RR-109	128	2 EX		2 EX	Install faucets at all existing lavs	L2			EP-3	P10	Remove and reinstall existing toilet partitions. Provide new floor mount shoes.	-	2 TD	PT	2 SD		-
1	North Girls	RR-110	125.5	3 EX		2 EX	Install faucets at all existing lavs	L2			EP-3	P10	Remove and reinstall existing toilet partitions. Provide new floor mount shoes.	-	3 TD	2 PT	2 SD	SN	-
1	Health Suite RR	RR-111		1 EX		1 EX	Install faucets at all existing lavs	L1		P1	EP-3	P10		-	TD	PT	SD	SN	-
2	Girls Restroom	RR-201	293	6 EX		5 EX	Install faucets at all existing lavs	L2		P1 P6	EP-3	P10	P1 to 6'8"aff, Feature paint 6'8"aff to ceiling	-	6 TD	2 PT	4 SD	SN	-
2	Boys Restroom	RR-202	230	4 EX	2 EX	4 EX	Install faucets at all existing lavs	L2		P1 P6	EP-3	P10	P1 to 6'8"aff, Feature paint 6'8"aff to ceiling	-	4 TD	2 PT	4 SD		-



STEM - SCHEDULE			
Project number	202301.0010	A202	
Date	02/15/2023		
Drawn by	Author		
Checked by	Checker		
		Scale	

CHESTER UPLAND HIGH SCHOOL

SPACE DEFINITION				Plumbing Scope				Lighting Scope		Finishes Scope					Toilet Partition	Toilet Room Accessories				
Floor	ROOM NAME	ROOM TAG	AREA (SF)	WC	U	LAV	Plumbing Notes	Lights	Notes	Doors	Walls	Floor	Ceiling	Notes	Type	Accessories				
1	Boys A-Side	A125	192	2 EX	6 EX	3 LAV 1	Clean and reseal all wall mounted bowls and Urinals. Replace lavs and facuets	3 L2		P7	P1 P4	EP1	P10	AP-FV, EP. Feature Paint on lav wall	TP2	2 TD	2 PT	2 SD		3 M1
1	Girls A-Side	A127	187	4 EX		3 LAV 1	Clean and reseal all wall mounted bowls. Replace lavs and facuets	3 L2		P7	P1 P4	EP1	P10	AP-FV, EP. Feature Paint on lav wall and Return	TP2	4 TD	2 PT	2 SD	4 SN	3 M1
1	A -Staff and Locker Womens	B106	78	EX		LAV2	Clean and reseal Shower	L2		P7	P1 P4	EP1	P10	New SST Access Panel with Flange 24x36 Repair Ceilings, scrapre and clean patch and refinsh. AP-FV, EP.	TP2	TD	PT	SD	SN	M1
1	A -Staff and Locker Mens	B107	78	EX		LAV2	Clean and reseal Shower	L2		P7	P1 P4	EP1	P10	New SST Access Panel with Flange 24x36 Repair Ceilings, scrapre and clean patch and refinsh. AP-FV, EP.	TP2	TD	PT	SD		M1
1	Boys C-Side	C105	191.5	2 EX	6 EX	3 LAV 1	Clean and reseal all wall mounted bowls and Urinals. Replace lavs and facuets	3 L2		P7	P1 P3	EP1	P10	TYP. AP-FV, EP. Feature Paint on lav wall	TP2	2 TD	2 PT	2 SD		2 M1
1	Girls C-Side	C107	187.5	4 EX		3 LAV 1	Remove Lav in ADA stall, remove piping and cap. Patch wall and prepare for paint. Install new Grab Bars.	3 L2		P7	P1 P3	EP1	P10	TYP. AP-FV, EP. Feature Paint on lav wall and Return	TP2	4 TD	2 PT	2 SD	4 SN	3 M1
1	E-Mens	E126	160	-	-	-	Existing to remain -NIC							Existing to remain -NIC						
1	E-Womens	E127	128.5	-	-	-	Existing to remain -NIC							Existing to remain -NIC						



HIGH SCHOOL - SCHEDULE			
Project number	202301.0010	A203	
Date	02/15/2023		
Drawn by	Author	Scale	
Checked by	Checker		

SPACE DEFINITION				Plumbing Scope				Lighting Scope		Finishes Scope					Toilet Partition	Toilet Room Accessories				
Floor	ROOM NAME	ROOM TAG	AREA (SF)	WC	U	LAV	Plumbing Notes	Lights	Notes	Doors	Walls	Floor	Ceiling	Notes	Type	Accessories				
2	Boys A-Side	A225	192	2 EX	6 EX	3 LAV 1	Clean and reseal all wall mounted bowls and Urinals. Replace lavs and facuets	3 L2		P7	P1 P4	EP1	P10	TYP. AP-FV, EP. Feature Paint on lav wall	TP2	2 TD	2 PT	3 SD		3 M1
2	Girls A-Side	A227	187.5	4 EX		3 LAV 1	Clean and reseal all wall mounted bowls. Replace lavs and facuets	3 L2		P7	P1 P4	EP1	P10	TYP. AP-FV, EP. . Feature Paint on lav wall and Return	TP2	4 TD	2 PT	3 SD	4 SN	3 M1
2	Staff Mens	B100.1	25	EX		LAV2	Clean and reseal all wall mounted bowls, Replace lavs and facuets	L4		P7	P2	EP1	P10	TYP. AP-FV, EP.	-	TD	PT	SD	SN	M2
2	Staff Womens	B100.2	34	EX		LAV2	Clean and reseal all wall mounted bowls, Replace lavs and facuets	L4		P7	P2	EP1	P10	TYP. AP-FV, EP.	-	TD	PT	SD	SN	M2
2	Staff Womens Loading	B220	53.5	EX		EX	Clean and Reseal	-		P7	P2	EP1	P10		-	TD	PT	SD	SN	M2
2	Staff Mens Loading	B221	53.5	EX		EX	Clean and Reseal	-		P7	P2	EP1	P10		-	TD	PT	SD		M2
2	Boys C-Side	C205	191.5	2 EX	6 EX	3 LAV 1	Clean and reseal all wall mounted bowls and Urinals. Replace lavs and facuets	3 L2		P7	P1 P3	EP1	P10	TYP. AP-FV, EP. Feature Paint on lav wall	TP2	2 TD	2 PT	3 SD		3 M1
2	Girls C-Side	C207	187	3 EX		3 LAV 1	Clean and reseal all wall mounted bowls, Replace lavs and facuets. Remove Lav in ADA stall, remove piping and cap. Patch wall and prepare for paint. Install new Grab Bars.	3 L2		P7	P1 P3	EP1	P10	TYP. AP-FV, EP. Feature Paint on lav wall and return	TP2	4 TD	2 PT	3SD	4 SN	3 M1
2	Girls E Locker Toilet	E260	109	4 EX		3 LAV1	Clean and reseal all wall mounted bowls, Replace lavs and facuets. Remove Lav in ADA stall, remove piping and cap. Patch wall and prepare for paint. Install new Grab Bars.	2 L2		P2	P1 P3	EP1	P10		TP2	3 TD	2 PT	3 SD	3 SN	2 M1
2	Girls E - Side	E261	175	3 EX		3 LAV1	Clean and reseal all wall mounted bowls, Replace lavs and facuets. Remove Lav in ADA stall, remove piping and cap. Patch wall and prepare for paint. Install new Grab Bars.	3 L2		P2	P1 P3	EP1	P10	TYP. AP-FV, EP. Feature Paint on lav wall	TP2	3 TD	2 PT	3 SD	3 SN	3 M1
2	Boys E - Side	E262	163	3 EX		3 LAV1	Clean and reseal all wall mounted bowls and Urinals. Replace lavs and facuets	3 L2		P2	P1 P3	EP1	P10	TYP. AP-FV, EP. Feature Paint on lav wall and return	TP2	3 TD	2 PT	3 SD		3 M1
2	Boys E Locker Toilet	E263	109	2 EX	5 EX	3 LAV1	Clean and reseal all wall mounted bowls and Urinals. Replace lavs and facuets	2 L2		P2	P1 P3	EP1	P10		TP2	2TD	2 PT	2 SD		3 M1
2	Boys Coach Room Toilet	E264	175	1 EX		2 EX	Clean and Reseal	L1	Install in WC	P2	P1 P4	EP1	P10		-	TD	PT	SD		M1
2	Girls Coach Room Toilet	E265	102	EX		2 EX	Clean and Reseal	L1	Install in WC	P2	P1 P4	EP1	P10		-	TD	PT	SD	SN	M1



HIGH SCHOOL - SCHEDULE			
Project number	202301.0010	A204	
Date	02/15/2023		
Drawn by	Author		
Checked by	Checker		
		Scale	

SPACE DEFINITION				Plumbing Scope				Lighting Scope		Finishes Scope					Toilet Partition	Toilet Room Accessories				
Floor	ROOM NAME	ROOM TAG	AREA (SF)	WC	U	LAV	Plumbing Notes	Lights	Notes	Doors	Walls	Floor	Ceiling	Notes	Type	Accessories				
3	Cafeterial Staff Womens	A323	116.5	2 EX		EX	Existing to remain	L1		P7	P1	EP1	P10		-	TD	PT	SD	SN	M1
3	Cafeterial Staff Mens	A324	63	2 EX	EX	EX	Existing to remain	L1		P7	P1	EP1	P10		-	TD	PT	SD		M1
3	Boys A-Side	A325	183.5	2 EX	6 EX	3 LAV1	Clean and reseal all wall mounted bowls and Urinals. Replace lavs and facuets	3 L2		P7	P1 P4	EP1	P10	AP-FV, EP. Feature Paint on lav wall	TP2	2 TD	2 PT	3 SD		3 M1
3	Girls A-Side	A327	180.5	4 EX		3 LAV1	Clean and reseal all wall mounted bowls. Replace lavs and facuets	3 L2		P7	P1 P4	EP1	P10	AP-FV, EP. . Feature Paint on lav wall and Return	TP2	4 TD	2 PT	3 SD	4 SN	3 M1
3	Boys C-Side	C305	185.5	2 EX	6 EX	3 LAV1	Clean and reseal all wall mounted bowls and Urinals. Replace lavs and facuets	3 L2		P7	P1 P3	EP1	P10	AP-FV, EP. Feature Paint on lav wall	TP2	2 TD	2 PT	3 SD		3 M1
3	Girls C-Side	C307	175	4 EX		3 LAV1	Clean and reseal all wall mounted bowls, Replace lavs and facuets. Remove Lav in ADA stall, remove piping and cap. Patch wall and prepare for paint. Install new Grab Bars.	3 L2		P7	P1 P3	EP1	P10	AP-FV, EP. . Feature Paint on lav wall and Return	TP2	4 TD	2 PT	3SD	4 SN	3 M1
3	EX - Staff Mens NEW - ALL GENDER	C350	116.5	-	-	-	Refer to Sheets AD131 and A301 for demo and new scope	2 L2		P7	P1 P4	EP1	P10	New SST Access Panel with Flange. New SST escutcheon plates for all wall flushometers. Feature Paint on entry wing wall	-	TD	PT	SD	SN	M1
3	EX - Staff Womens NEW - ALL GENDER	C351	209	-	-	-	Refer to Sheets AD131 and A301 for demo and new scope	3 L2		P7	P1 P2 P4	EP1	P10	New SST Access Panel with Flange. Feature Paint on entry wing wall and return. P2 for vestibule space. P1 in stall.	-	TD	PT	SD	SN	2 M1
3	Staff	D310	25	EX		LAV2	Clean and reseal all wall mounted bowls, Replace lavs and facuets	L4		P7	P2	EP1	P10	AP-FV, EP.	-	TD	PT	SD	SN	M2
3	Principal	D311	25	EX		LAV2	Clean and reseal all wall mounted bowls, Replace lavs and facuets	L4		P7	P2	EP1	P10	AP-FV, EP.	-	TD	PT	SD	SN	M2
3	Locker Room	E306	1162	-	-	-	-	-	NIC	P2	P1 P3	EP1	P10	New Epoxy floor and base. Terminate base at locker base. New paint to walls. Exclude mural area. Confirm extents with Architect.	-	-	-	-	-	-
3	Team Restroom and Showers	E307	117	1 EX	2 EX	LAV1	Clean and reseal all wall mounted bowls, Replace lavs and facuets	L1		P2	P1 P3	EP1	P10	AP-FV, EP. Feature Paint on entry wing wall	TP2	TD	PT	SD		M1
3	Girls E- Restroom	E309	290	6 EX		4 LAV1	Clean and reseal all wall mounted bowls, Replace lavs and facuets	L2		P2	P1 P3	EP1	P10	AP-FV, EP. Feature Paint on entry wing wall	TP2	6 TD	2 PT	4 SD	6 SN	4 M1
3	Boys E- Restroom	E312	200	2 EX	3 EX	3 LAV1	Clean and reseal all wall mounted bowls, Replace lavs and facuets	L2		P2	P1 P3	EP1	P10	AP-FV, EP. Feature Paint on entry wing wall	TP2	2 TD	2 PT	3 SD		3 M1
3	Health Suite Womens	E350	110	2 EX		1 LAV1	Clean and reseal all wall mounted bowls, Replace lavs and facuets	L2		P7	P2	EP1	P10	AP-FV, EP.	TP2	2 TD	PT	SD	2 SN	M2
3	Health Suite Boys	E351	88.5	EX	EX	2 LAV1	Clean and reseal all wall mounted bowls and Urinals. Replace lavs and facuets	L2		P7	P2	EP1	P10	AP-FV, EP.	TP2	TD	PT	SD	SN	2 M2
3	Health Suite Staff	E352	22	EX		LAV2	Clean and reseal all wall mounted bowls, Replace lavs and facuets	L1		P7	P2	EP1	P10	AP-FV, EP.	-	TD	PT	SD	SN	M2
3	Dressing room Womens	E353	30	EX		LAV2	Clean and reseal all wall mounted bowls, Replace lavs and facuets	L1		P7	P2	EP1	P10	AP-FV, EP.	-	TD	PT	SD	SN	M2
3	Dressing Room Mens	E354	32	EX		LAV2	Clean and reseal all wall mounted bowls, Replace lavs and facuets	L1		P7	P2	EP1	P10	AP-FV, EP.	-	TD	PT	SD		M2



HIGH SCHOOL - SCHEDULE		
Project number	202301.0010	A205
Date	02/15/2023	
Drawn by	Author	
Checked by	Checker	Scale

SPACE DEFINITION				Plumbing Scope				Lighting Scope		Finishes Scope					Toilet Partition	Toilet Room Accessories				
Floor	ROOM NAME	ROOM TAG	AREA (SF)	WC	U	LAV	Plumbing Notes	Lights	Notes	Doors	Walls	Floor	Ceiling	Notes	Type	Accessories				
4	Boys A-Side	A425	183.5	2 EX	6 EX	3 LAV1	Clean and reseal all wall mounted bowls and Urinals. Replace lavs and facuets	3 L1		P7	P1 P4	EP1	P10	AP-FV, EP.	PT2	2 TD	2 PT	3 SD		3 M1
4	Girls A-Side	A457	180.5	4 EX		3 LAV1	Clean and reseal all wall mounted bowls and Urinals. Replace lavs and facuets	3 L1		P7	P1 P4	EP1	P10	AP-FV, EP. Feature Paint on lav wall and Return	PT2	4 TD	2 PT	3 SD	4 SN	3 M1
4	Stafff Mens	B430	125	1 EX	1 EX	2 LAV1	Clean and reseal all wall mounted bowls and Urinals. Replace lavs and facuets	2 L1		P7	P2	EP1	P10	AP-FV, EP	PT1	2 TD	2 PT	2 SD		2 M1
4	Staff Womens	B431	125	2 EX		2 LAV1	Clean and reseal all wall mounted bowls and Urinals. Replace lavs and facuets	2 L1		P7	P2	EP1	P10	AP-FV, EP	PT1	2 TD	2 PT	2 SD	2 SN	2 M1
4	Boys C-Side	C405	185	2 EX	6 EX	3 LAV1	Clean and reseal all wall mounted bowls and Urinals. Replace lavs and facuets	3 L1		P7	P1 P3	EP1	P10	AP-FV, EP. Feature Paint on lav wall and Return	PT2	2 TD	2 PT	3 SD		3 M1
4	Girls C-Side	C407	175	3 EX		3 LAV1	Clean and reseal all wall mounted bowls and Urinals. Replace lavs and facuets. Remove Lav in ADA stall, remove piping and cap. Patch wall and prepare for paint. Install new Grab Bars.	3 L1		P7	P1 P3	EP1	P10	AP-FV, EP. Feature Paint on lav wall and Return	PT2	4 TD	2 PT	3SD	4 SN	3 M1
5	Boys A-Side	A525	183.5	2 EX	6 EX	3 LAV1	Clean and reseal all wall mounted bowls and Urinals. Replace lavs and facuets	3 L1		P7	P1 P4	EP1	P10	AP-FV, EP. Feature Paint on lav wall	PT2	2 TD	2 PT	3 SD		3 M1
5	Girls A-Side	A527	180.5	4 EX		3 LAV1	Clean and reseal all wall mounted bowls and Urinals. Replace lavs and facuets	3 L1		P7	P2	EP1	P10	AP-FV, EP. Feature Paint on lav wall and Return	PT2	4 TD	2 PT	3 SD	4 SN	3 M1
5	Stafff Mens	B530	125	1 EX	1 EX	2 LAV1	Clean and reseal all wall mounted bowls and Urinals. Replace lavs and facuets	2 L1		P7	P2	EP1	P10	AP-FV, EP	PT1	2 TD	2 PT	2 SD		2 M1
5	Staff Womens	B531	125	2 EX		2 LAV1	Clean and reseal all wall mounted bowls and Urinals. Replace lavs and facuets	2 L1		P7	P1 P4	EP1	P10	AP-FV, EP	PT1	2 TD	2 PT	2 SD	2 SN	2 M1
5	Boys C-Side	C505	185	2 EX	6 EX	3 LAV1	Clean and reseal all wall mounted bowls and Urinals. Replace lavs and facuets	3 L1		P7	P1 P3	EP1	P10	AP-FV, EP. Feature Paint on Lav wall	PT2	2 TD	2 PT	3 SD		3 M1
5	Girls C-Side	C507	175	3 EX		3 LAV1	Clean and reseal all wall mounted bowls and Urinals. Replace lavs and facuets. Remove Lav in ADA stall, remove piping and cap. Patch wall and prepare for paint. Install new Grab Bars.	3 L1		P7	P1 P3	EP1	P10	AP-FV, EP. Feature Paint on lav wall and Return	PT2	4 TD	2 PT	3SD	4 SN	3 M1



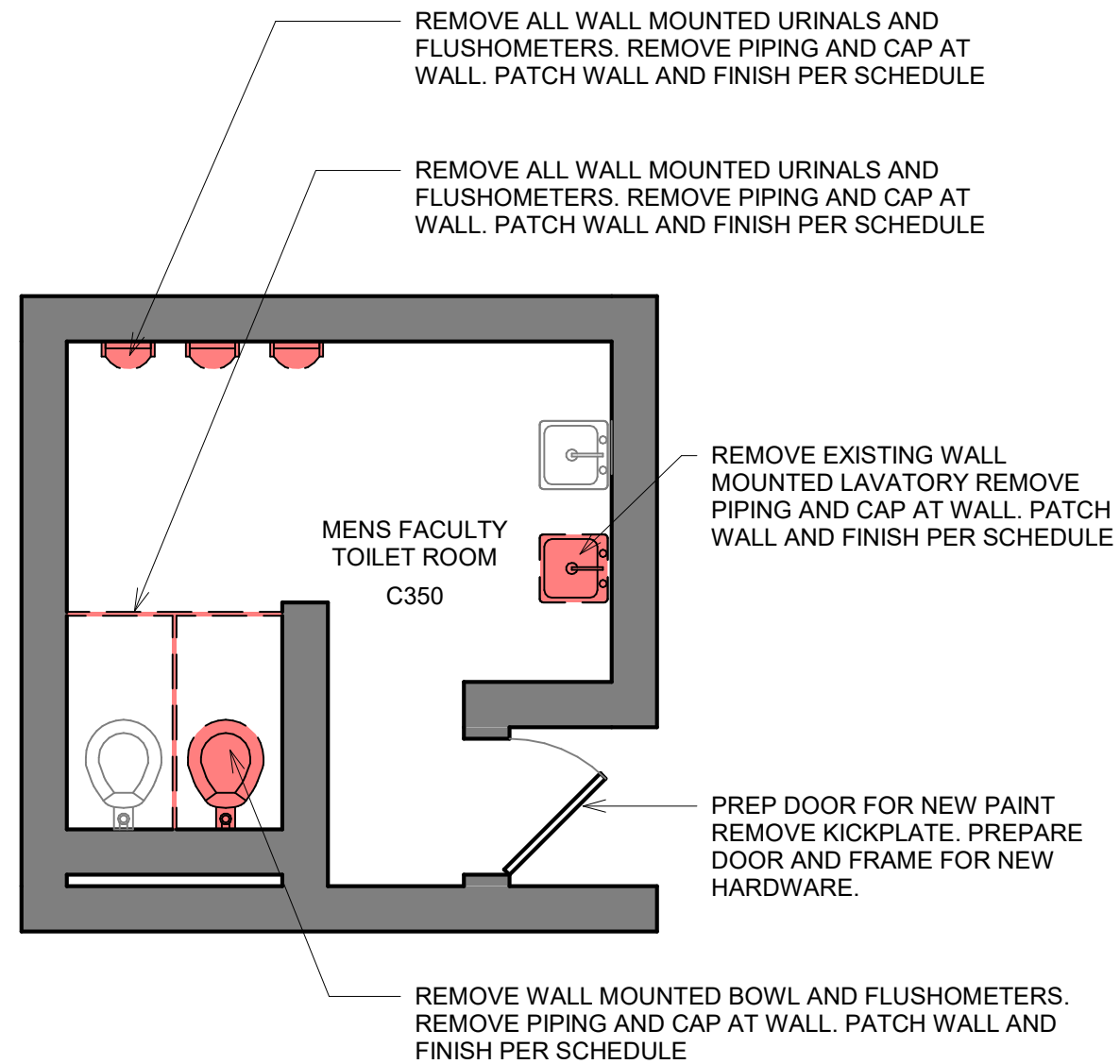
HIGH SCHOOL - SCHEDULE			
Project number	202301.0010	A206	
Date	02/15/2023		
Drawn by	Author		
Checked by	Checker	Scale	

CUSA ELEMENTARY SCHOOL

				Plumbing Scope				Lights	Finishes Scope					Toilet Partition	Toilet Room Accessories				
FLOOR	ROOM NAME	ROOM TAG	AREA (SF)	WC	U	LAV	Plumbing Notes		Door	Walls	Floor	Ceiling	Notes	Type	Accessories				
1	Health Suite	RR-106	48	EX		EX	New Faucet	L3	EX		EP2	ACT	Epoxy base tie in at tile cove course, Protect all ceiling mounted fixtures and reinstall in new ceiling panels	-	TD	PT	SD	SN	
1	Principals Office RR	RR-105	55	EX		EX	New Faucet	L3	EX		EP2	ACT	Epoxy base tie in at tile cove course, Protect all ceiling mounted fixtures and reinstall in new ceiling panels	-	TD	PT	SD		
1	Staff RR	RR-103	77	WCF		LAV3	Refer to Sheets AD402 and A403 for demo and new scope	L3	EX	P1	EP2	ACT		-	TD	PT	SD		M1
1	Staff RR	RR-104	77	WCF		LAV1	Refer to Sheets AD402 and A403 for demo and new scope	L3	EX	P1	EP2	ACT		-	TD	PT	SD	SN	M1
1	Group Boys	RR-101	224	3 WCF-CH	7 U	2-LAV2	Remove existing millwork counters and sink, relocate floor penetrating piping to chase wall and install new wall mounted lav's. Refer to Allowance 1	2 L3	P8	CT-1 CT-2	EP4	ACT	Demo all wall tile and wall mounted accessores, install new tile backer, and new ceramic tile. Remove mosiac tile floor, install new substrate for epoxy floor with 4" integrated cove base.	TP2	3 TD	2 PT	2 SD		M2
1	Group Girls	RR-102	224	6 WCF-CH		5 -LAV2	Remove Lav and all grab bars in rear stall, remove piping and cap.	2 L3	P8	CT-1 CT-2	EP4	ACT	Demo all wall tile and wall mounted accessories, install new tile backer, and new ceramic tile to 6'-8 AFF. Remove mosiac tile floor, install new substrate for epoxy floor with 4" integrated cove base	P2	7 TD	2 PT	2 SD		M2
2	Group Boys	RR-201	224	3 WCF	7 U	LAV2	Remove existing millwork counters and sink, relocate floor penetrating piping to chase wall and install new wall mounted lav's. Refer to Allowance 1	2 L3	P8	CT-1 CT-2	EP4	ACT	Demo all wall tile and wall mounted accessories, install new tile backer, and new ceramic tile to 6'-8 AFF. Remove mosiac tile floor, install new substrate for epoxy floor with 4" integrated cove base	P2	3 TD	2 PT	2 SD		M2
2	Group Girls	RR-202	224	6 WCF		5 -LAV2	Remove Lav and all grab bars in rear stall, remove piping and cap.	2 L3	P8	CT-1 CT-2	EP4	ACT	Demo all wall tile and wall mounted accessories, install new tile backer, and new ceramic tile to 6'-8 AFF. Remove mosiac tile floor, install new substrate for epoxy floor with 4" integrated cove base	P2	7 TD	2 PT	2 SD		M2
3	Group Boys	RR-301	224	3 WCF	7 U	LAV2	Remove existing millwork counters and sink, relocate floor penetrating piping to chase wall and install new wall mounted lav's. Refer to Allowance 1	2 L3	P8	CT-1 CT-2	EP4	ACT	Demo all wall tile and wall mounted accessories, install new tile backer, and new ceramic tile to 6'-8 AFF. Remove mosiac tile floor, install new substrate for epoxy floor with 4" integrated cove base	P2	3 TD	2 PT	2 SD		M2
3	Group Girls	RR-302	224	6 WCF	6 U	5 -LAV2	Remove Lav and all grab bars in rear stall, remove piping and cap.	2 L3	P9	CT-1 CT-2	EP4	ACT	Demo all wall tile and wall mounted accessores, install new tile backer, and new ceramic tile. Remove mosiac tile floor, install new substrate for epoxy floor with 4" integrated cove base	P2	7 TD	2 PT	2 SD		M2

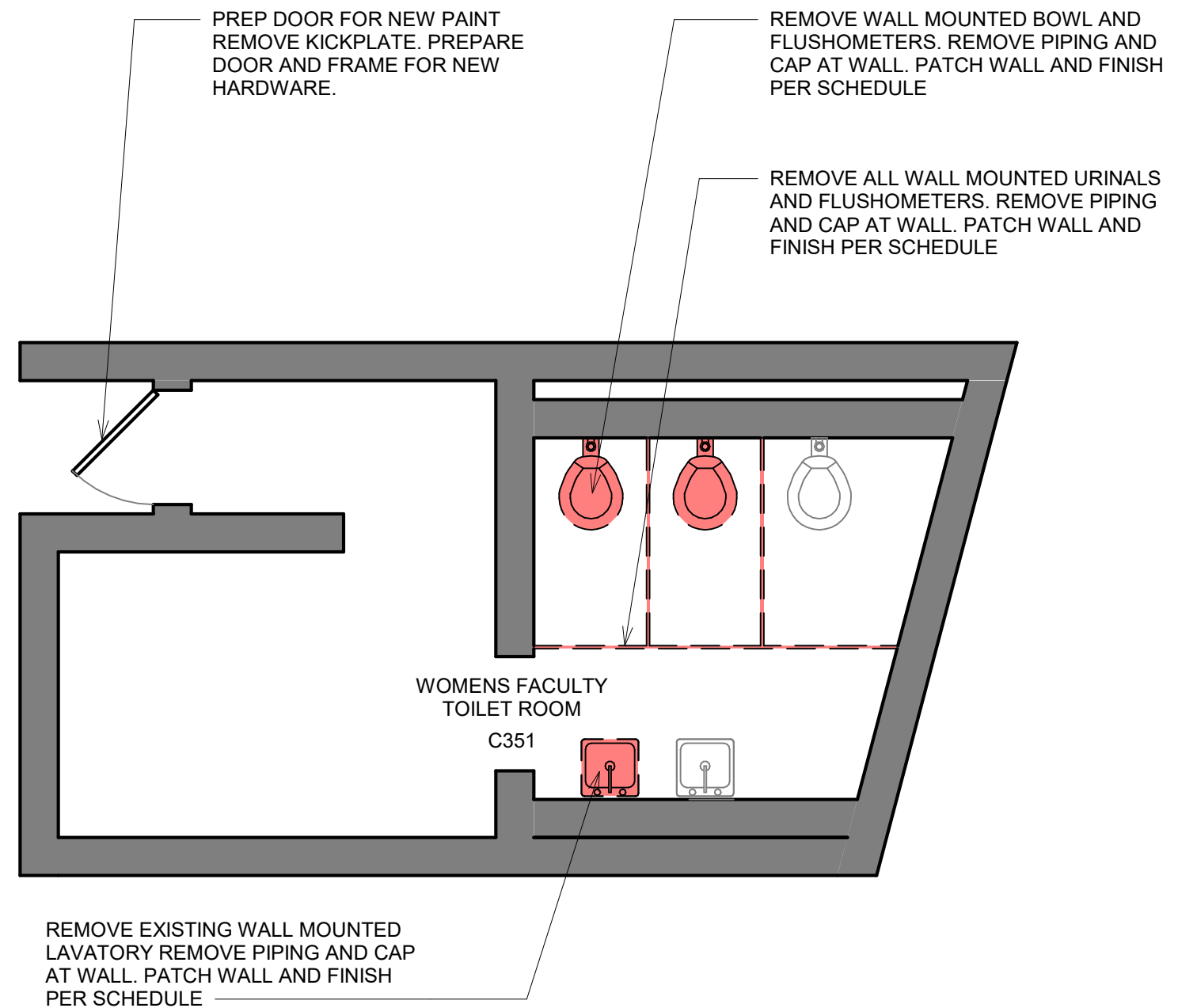


CUSA - SCHEDULE			
Project number	202301.0010	A208	
Date	02/15/2023		
Drawn by	Author		
Checked by	Checker		



CHESTER HIGH SCHOOL RESTROOM C350
DEMOLITION PLAN

SCALE: 1/2" = 1'



CHESTER HIGH SCHOOL RESTROOM C351
DEMOLITION PLAN

SCALE: 1/2" = 1'



MG Engineering

CUSD RESTROOM UPGRADES

CHESTER HIGHSCHOOL LEVEL 3 RESTROOM DEMOLITION PLANS

Project number 202301.0010

Date 02/15/2023

Drawn by MC

Checked by CF

AD 301

Scale 1/4" = 1'-0"

PIAINT DOOR PER SCHEDULE. PROVIDE NEW KICK PLATE. PROVIDE NEW RESTROOM LOCK HARDWARE SET PER SPECIFICATION

NEW EPOXY FLOOR FINISH AND BASE. PAINT ALL WALLS AND CEILING. NEW L1 LIGHT FIXTURES



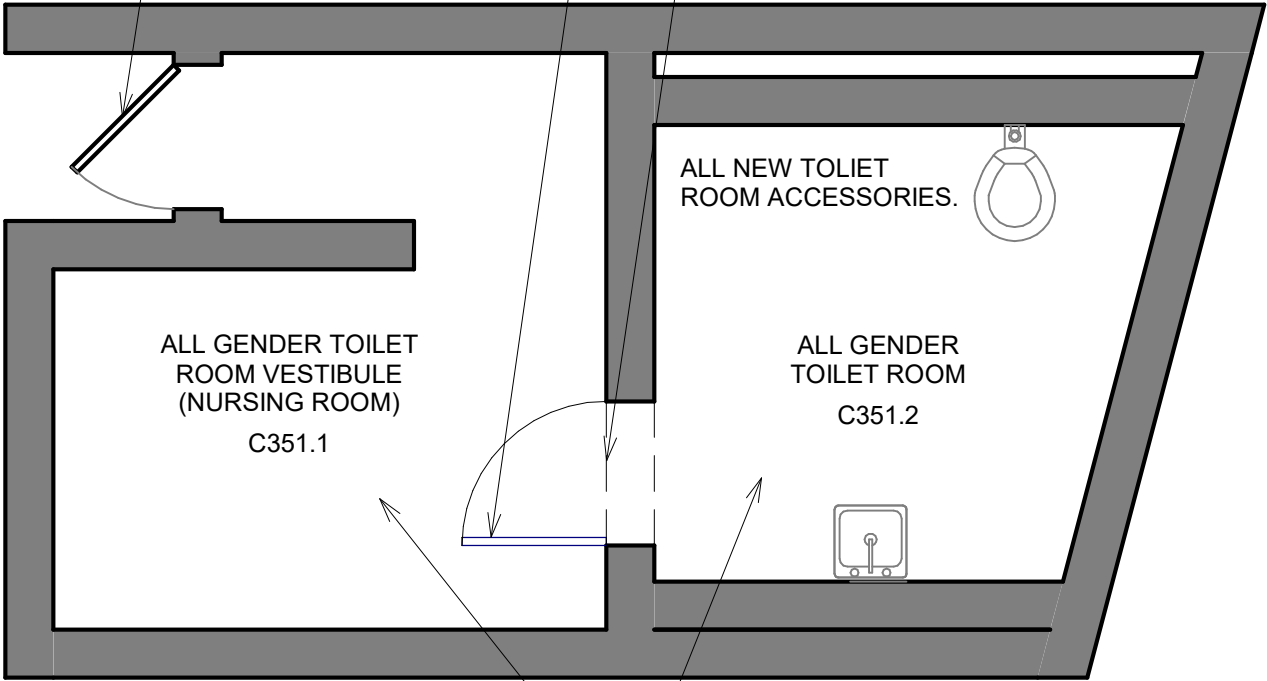
CHESTER HIGH SCHOOL RESTROOM C350
NEW PLAN

SCALE: 1/2" = 1'

PIAINT DOOR PER SCHEDULE. PROVIDE NEW KICK PLATE. PROVIDE NEW RESTROOM LOCK HARDWARE SET PER SPECIFICATION

PROVIDE NEW PAINTED HOLLOW METAL DOOR AND FRAME IN EXISTING OPENING. USE HARDWARE SET PER SPECIFICATION

PROVIDE METAL STUD FRAMED HEADER WITH 5/8" GWB EACH SIDE. PAINT PER SCHEDULE



NEW EPOXY FLOOR FINISH AND BASE. PAINT ALL WALLS AND CEILING. NEW L1 LIGHT FIXTURES

CHESTER HIGH SCHOOL RESTROOM C351
NEW PLAN

SCALE: 1/2" = 1'



MG Engineering

CUSD RESTROOM UPGRADES

CHESTER HIGHSCHOOL LEVEL 3 RESTROOM NEW PLANS

Project number	202301.0010
Date	02/15/2023
Drawn by	MC
Checked by	CF

A 301

Scale 1/4" = 1'-0"