

ABBREVIATIONS

ABS	ABSOLUTE	EWL	ELECTRIC WATER HEATER	NL	NIGHT LIGHT
AC	ALTERNATING CURRENT	EWT	ENTERING WATER TEMPERATURE	N.O.	NORMALLY OPEN
AD	AREA DRAIN	EXP	EXPANSION	NO.	NUMBER
AFF	ABOVE FINISHED FLOOR	EXP JT	EXPANSION JOINT	NTS	NOT TO SCALE
AGF	AIR GAP FITTING	EXT	EXTERIOR	OA	OUTSIDE AIR
AHU	AIR HANDLING UNIT	°F	DEGREE FAHRENHEIT	OD	OUTSIDE DIAMETER
AMP	AMPERE	F	FIRE PROTECTION WATER SUPPLY	OD	OVERFLOW DRAIN
ANSI	AMERICAN NATIONAL STANDARDS INSTITUTE	FCO	FLOOR CLEANOUT	%	PERCENT
APP	APPROVED	FD	FLOOR DRAIN	PCR	PUMPED CONDENSATE RETURN
APPROX	APPROXIMATE	FDC	FIRE DEPARTMENT CONNECTION	PD	PUMPED DRAIN
AV	ACID VENT	FHC	FIRE HOSE CABINET	PDI	PLUMBING & DRAINAGE INSTITUTE
AVG	AVERAGE	FHV	FIRE HOSE VALVE	PG	PRESSURE GAUGE
B.O.P.	BOTTOM OF PIPE	FIN	FINISH	PH	PHASE-ELECTRICAL
BFP	BACKFLOW PREVENTION DEVICE	FF	FINISHED FLOOR	PIV	POST INDICATOR VALVE
BFV	BUTTERFLY VALVE	FLD	FUSIBLE LINK FIRE DAMPER	PLBG	PLUMBING
BHP	BRAKE HORSEPOWER	FLR	FLOOR	PP	POLYPROPYLENE PIPE
BLDG	BUILDING	FO	FUEL OIL	PRV	PRESSURE REDUCING VALVE
BLV	BALANCING VALVE	FFM	FEET PER MINUTE	PSF	POUNDS PER SQUARE FOOT
BTU	BRITISH THERMAL UNIT	FFS	FEET PER SECOND	PSI	POUNDS PER SQUARE INCH
BV	BALL VALVE	FS	FLOW SWITCH	PVC	POLYVINYL CHLORIDE PIPE
BWV	BACKWATER VALVE	FT	FEET	QT	QUART
CA	COMPRESSED AIR	FU	FIXTURE UNIT	(R)	REMOVE EXISTING
C TO C	CENTER TO CENTER	FV	FLUSH VALVE	(RE)	RELOCATE EXISTING
CD	CONDENSATE DRAIN	G	NATURAL GAS	RA	RETURN AIR
CFH	CUBIC FEET PER HOUR	GA	GAUGE	RD	ROOF DRAIN
CFM	CUBIC FEET PER MINUTE	GAL	GALLONS	R&D	RESEARCH & DEVELOPMENT
CHWR	CHILLED WATER RETURN	GALV	GALVANIZED	REQ	REQUIRED
CHWS	CHILLED WATER SUPPLY	GPD	GALLONS PER DAY	RG	RETURN AIR GRILLE
CI	CAST IRON	GPH	GALLONS PER HOUR	RH	RELATIVE HUMIDITY
CISP	CAST IRON SOIL PIPE	GPM	GALLONS PER MINUTE	RM	ROOM
CISPI	CAST IRON SOIL PIPE INSTITUTE	GR	GRAINS OF MOISTURE	RPM	REVOLUTIONS PER MINUTE
CKT	CIRCUIT	GRD	GROUND	RR	RETURN AIR REGISTER
CLG	CEILING	GWH	GAS WATER HEATER	RWC	RAINWATER CONDUCTOR
CO	CLEANOUT	H	ENTHALPY	RZBP	REDUCED PRESSURE ZONE BFP
CO2	CARBON DIOXIDE	HB	HOSE BIBB	SA	SHOCK ABSORBER
COL	COLUMN	HC	HANDICAP	SAN	SANITARY WASTE
COND	CONDENSATE	HD	HEAD	SCH	SCHEDULE
CONN	CONNECTION	HP	HORSEPOWER	SD	SUPPLY AIR DIFFUSER
CONT	CONTINUED	HPCR	HIGH PRESSURE CONDENSATE RETURN	SF	SQUARE FEET
CONTR	CONTRACTOR	HPSS	HIGH PRESSURE STEAM SUPPLY	SH	SHOWER
CP	CONTROL PANEL	HR	HOUR	SP	STANDPIPE
CR	CONDENSER RETURN	HS	HOSE STATION	SPD	SURGE PROTECTION DEVICE
CS	CONDENSER SUPPLY	HT	HEIGHT	SPEC	SPECIFICATION
CU FT	CUBIC FEET	HTR	HEATER	SPR	SPRINKLER
CU IN	CUBIC INCH	HVAC	HEATING VENTILATION AIR CONDITIONING	SQ	SQUARE
CV	CHECK VALVE	HW	HOT WATER (DOMESTIC)	SR	SUPPLY AIR REGISTER
CW	COLD WATER (DOMESTIC)	HWR	HOT WATER RETURN (DOMESTIC)	SS	STAINLESS STEEL
DB	DECIBEL	HWR	HOT WATER RETURN	STD	STANDARD
DB	DRY BULB	HWS	HOT WATER SUPPLY	STL	STEEL
DCBP	DOUBLE CHECK BACKFLOW PREVENTER	HZ	FREQUENCY-ELECTRICAL	STR	STRAINER
DD	DECK DRAIN	ID	INSIDE DIAMETER	STRUC	STRUCTURAL
DEG	DEGREE	ID	INDIRECT DRAIN	SUCT	SUCTION
DFU	DRAINAGE FIXTURE UNIT	IE	INVERT ELEVATION	SV	SANITARY VENT
DI	DEIONIZED WATER	IW	INDIRECT WASTE	SWV	SANITARY WASTE VENT
DIA	DIAMETER	KW	KILOWATT	T&P	TEMPERATURE & PRESSURE RELIEF VALVE
DIS	DISTILLED WATER	KWH	KILOWATT HOUR	TEMP	TEMPERATURE
DISCH	DISCHARGE	LAT	LEAVING AIR TEMPERATURE	THERM	THERMOMETER
DN	DOWN	LAV	LAVATORY	T.O.P.	TOP OF PIPE
DP	DEEP	LBS	POUNDS	TP	TRAP PRIMER
DS	DOWNSPOUT	LF	LINEAR FEET	TYP	TYPICAL
DSP	DRY STANDPIPE	LL	LOW LEVEL	UL	UNDERWRITER'S LABORATORY
DTR	DUAL TEMPERATURE RETURN	LP	LIQUID PROPANE	UTIL	UTILITY
DTS	DUAL TEMPERATURE SUPPLY	LPCR	LOW PRESSURE CONDENSATE RETURN	VAC	VACUUM
DTTV	DOUBLE THICK TURNING VANES	LPCS	LOW PRESSURE CONDENSATE SUPPLY	VAV	VARIABLE AIR VOLUME
DVC	DRY VACUUM CLEANING	LWT	LEAVING WATER TEMPERATURE	VB	VACUUM BREAKER
DWG	DRAWING	MAU	MAKE-UP AIR UNIT	VD	VOLUME DAMPER
DWR	DOMESTIC WATER RISER	MAX	MAXIMUM	VEL	VELOCITY
(E)	EXISTING	MECH	MECHANICAL	VERT	VERTICAL
EA	EXHAUST AIR	MFR	MANUFACTURER	VFD	VARIABLE FREQUENCY DRIVE
EAT	ENTERING AIR TEMPERATURE	MH	MANHOLE	VIF	VERIFY IN FIELD
EFF	EFFICIENCY	MIN	MINIMUM	VOL	VOLUME
EFL	EFFLUENT	MISC	MISCELLANEOUS	VPC	VIA PHOTOCELL
EL	ELEVATION	MOD	MOTOR OPERATED DAMPER	VTC	VIA TIME CLOCK
ELEC	ELECTRICAL	MPCR	MEDIUM PRESSURE CONDENSATE RETURN	VTR	VENT THROUGH ROOF
EMF	ELECTROMOTIVE FORCE	MPH	MILES PER HOUR	W/	WITH
EQ	EQUAL	MPSS	MEDIUM PRESSURE STEAM SUPPLY	WB	WET BULB TEMPERATURE
EQUIP	EQUIPMENT	(N)	NEW	WCO	WALL CLEANOUT
ES	EMERGENCY SHOWER	NA	NOT APPLICABLE	WH	WALL HYDRANT
ESP	EXTERNAL STATIC PRESSURE	NC	NOISE CRITERIA	WP	WEATHERPROOF
EVAP	EVAPORATOR	N.C.	NORMALLY CLOSED	WIO	WITHOUT
EW	EMERGENCY EYEWASH	NIC	NOT IN CONTRACT	WSFU	WATER SUPPLY FIXTURE UNITS
EWG	ELECTRIC WATER COOLER			YR	YEAR

PLUMBING GENERAL NOTES

- ALL WORK TO BE IN CONFORMANCE WITH THE INTERNATIONAL PLUMBING CODE, OR LOCAL CODE HAVING JURISDICTION. NOT ALL CODE REQUIREMENTS HAVE BEEN DESCRIBED IN THIS SPECIFICATION OR INDICATED ON THE DRAWINGS. IT IS THE CONTRACTOR'S RESPONSIBILITY TO BE FAMILIAR WITH THE CODES AND INSTALL THE WORK IN ACCORDANCE WITH CODES.
- OBTAIN AND PAY FOR BUILDING PERMITS, INSPECTIONS, CONNECTION CHARGES, AND FEES.
- THE CONTRACTOR IS TO SURVEY AND VERIFY ALL EXISTING CONDITIONS PRIOR TO BID SUBMISSION AND BECOME AWARE OF ALL CONDITIONS WHICH MAY IMPACT THE REQUIRED WORK. CONTRACTOR IS TO INCLUDE ALL ASSOCIATED COSTS (MATERIALS/ LABOR) DETERMINED TO BE REQUIRED DURING SITE INSPECTIONS. CONTRACTOR'S BID SUBMISSION IS TO BE CONSIDERED PROOF THAT THIS REQUIREMENT HAS BEEN MET.
- DRAWINGS AND SPECIFICATIONS ARE INTENDED TO BE TAKEN AS A WHOLE. IF A CONFLICT OR CONTRADICTION EXISTS BETWEEN THE DRAWINGS AND SPECIFICATIONS, THE MORE STRINGENT WILL APPLY. THE ARCHITECT'S AND ENGINEER'S INTERPRETATION OF THE DOCUMENTS ARE TO BE BINDING UPON THE CONTRACTOR.
- ALL WORK IS TO BE COORDINATED WITH, AND APPROVED BY THE OWNER PRIOR TO ANY SHUT-DOWNS. ALL REQUESTS ARE TO BE SUBMITTED, IN WRITING, TO THE OWNER 24, TO 48 HOURS PRIOR TO REQUESTED DELETIONS.
- COORDINATE LOCATIONS AND ROUGH-IN REQUIREMENTS WITH ALL TRADES PRIOR TO INSTALLATION.
- COORDINATE ALL ELECTRICAL REQUIREMENTS WITH THE ELECTRICAL CONTRACTOR PRIOR TO PURCHASING EQUIPMENT. VERIFY ALL VOLTAGE AND AMPERE REQUIREMENTS FOR FEEDERS, AND MOPP DEVICES.
- ALL EXTERIOR WALL/ ROOF PENETRATIONS ARE TO BE SEALED, AIR, AND WATER-TIGHT. ALL PIPING PASSING THROUGH WALL, OR FLOOR PENETRATIONS IS TO HAVE SLEEVES. ALL WALL, OR FLOOR-RATED PENETRATIONS ARE TO BE SEALED WITH FIRE-RATED SEALANT FORMED IN PLACE (BY 3M OR HILTI).
- VENTS THROUGH ROOF SHALL BE FLASHED WITH "SURE SEAL" PRE-MOLDED OR SIMILAR TYPE BOOT AS RECOMMENDED BY THE ROOFING CONTRACTOR.
- PROVIDE ALL ACCESS DOORS FOR ALL VALVES, DAMPERS, DEVICES, CONTROLLERS, ETC. WHICH MAY REQUIRE SERVICE. ALL ACCESS PANELS ARE BE 16 GAUGE STEEL FRAME, 20 GAUGE HINGED DOOR, LOCKABLE, AND FIRE-RATED (WHEN INSTALLED IN RATED WALLS, FLOORS, "B" LABEL, 1-1/2 HOURS). FINISH AS SELECTED BY THE ARCHITECT.
- SUBMIT SHOP DRAWINGS FOR ALL EQUIPMENT TO BE REVIEWED BY THE ENGINEER PRIOR TO ORDERING. COORDINATE ALL ELECTRICAL REQUIREMENTS WITH ELECTRICAL CONTRACTOR, AND PHYSICAL DIMENSIONS PRIOR TO SHOP DRAWING SUBMISSION.
- ALL WORK TO BE CONCEALED UNLESS OTHERWISE INDICATED.
- THE PLUMBING CONTRACTOR SHALL PROVIDE ALL REQUIRED INPUT OF THE PLUMBING SYSTEM TO THE MECHANICAL CONTRACTOR FOR THE COORDINATION DRAWINGS.
- PROVIDE RECORD AS-BUILT DRAWINGS AT COMPLETION OF WORK. SUBMIT TO OWNER AND ENGINEER FOR REVIEW AND APPROVAL.
- ALL FINISHES RELATED TO PLUMBING EQUIPMENT, TERMINAL EQUIPMENT, AIR DEVICES, PERIMETER HEATERS, LOUVERS, ACCESS PANELS, EXPOSED WIREMOLD/RACEWAYS, ETC. SHALL BE COORDINATED AND SELECTED BY THE ARCHITECT/OWNER/ENGINEER PRIOR TO SHOP DRAWING SUBMISSION, ORDERING, AND INSTALLATION.
- FINAL LOCATIONS OF ALL ACCESS PANELS, ETC. IN FINISHED SPACES SHALL BE COORDINATED AND APPROVED BY THE ARCHITECT/OWNER PRIOR TO ROUGH-IN AND INSTALLATION.
- NO PVC PIPING IS PERMITTED IN RETURN AIR PLENUMS.
- ALL THREE PHASE STARTER EQUIPMENT IS TO BE PROVIDED BY THE MECHANICAL CONTRACTOR AND IS TO BE MAGNETIC, ACROSS-THE-LINE WITH AUXILIARY CONTACTS. ALL SINGLE PHASE STARTER EQUIPMENT IS TO BE PROVIDED BY ELECTRICAL CONTRACTOR.
- ALL TRIM, TRAPS, ESCUTCHEON PLATES, SEAT HINGES AND ANY MISCELLANEOUS PARTS OF FIXTURES SHALL BE CHROME PLATED BRASS.
- THE CONTRACTOR IS TO COORDINATE HIS WORK, AND THE WORK OF HIS SUB-CONTRACTORS TO ENSURE THAT ALL OF THE WORK IS COMPLETE AND OPERATIONAL. THE CONTRACTOR IS TO PROVIDE COMPLETE COORDINATION DRAWINGS, INCLUDING ALL TRADES (MECHANICAL, ELECTRICAL, AND FIRE PROTECTION). THE CONTRACTOR IS TO COORDINATE ALL CONNECTIONS TO SITE CIVIL WORK PRIOR TO STARTING WORK.
- THE CONTRACTOR IS TO PROVIDE BALANCING VALVES ON ALL BRANCHES OF THE DOMESTIC HOT WATER RETURN SYSTEM, BALANCE THE SYSTEM, AND PROVIDE BALANCING REPORT TO THE OWNER/ ENGINEER FOR RECORD.
- THE CONTRACTOR IS TO PROVIDE MANUFACTURER'S START-UP OF ALL EQUIPMENT, AND SYSTEMS.
- PROPERLY INSTRUCT OWNER'S PERSONNEL IN THE OPERATION AND MAINTENANCE OF ALL SYSTEMS AND EQUIPMENT. PROVIDE THREE INSTRUCTION AND MAINTENANCE MANUALS. SUBMIT MANUALS FOR REVIEW PRIOR TO OPERATING INSTRUCTION.
- COORDINATE LOCATIONS AND ROUGH-IN REQUIREMENTS WITH ALL TRADES PRIOR TO INSTALLATION.
- IF THE CONTRACTOR ELECTS TO SUBMIT ALTERNATE EQUIPMENT, MANUFACTURERS, SYSTEMS, METHODS, OR MATERIALS NOT SPECIALLY IDENTIFIED IN THE DRAWINGS AND SPECIFICATIONS, IT IS THE CONTRACTOR'S RESPONSIBILITY TO COORDINATE THE WORK WITH OTHER TRADES AND PAY FOR ANY ADDITIONAL COSTS ASSOCIATED WITH THE SUBSTITUTION OR CHANGE.
- PROVIDE ONE SET OF ELECTRONIC AS-BUILT DRAWINGS AT COMPLETION OF WORK. SUBMIT TO OWNER AND ENGINEER FOR REVIEW AND APPROVAL.

PROJECT DEDUCT/ADD ALTERNATES

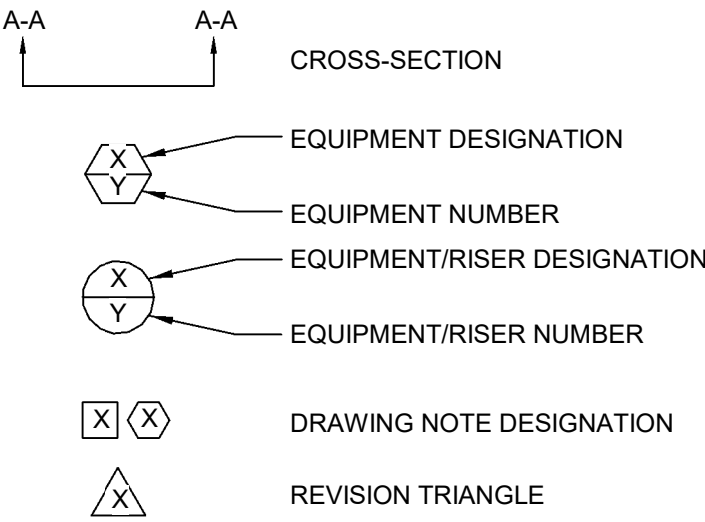
CONTRACTOR NOTES

CONTRACTOR IS TO COORDINATE FINAL LOCATIONS FOR ALL KITCHEN EQUIPMENT, FLOOR DRAINS, FLOOR SINKS, ETC. WITH THE ARCHITECT/ OWNER/ KITCHEN CONSULTANT PRIOR TO ROUGH-IN WORK. CONTRACTOR IS TO COORDINATE WITH KITCHEN VENDOR AND KITCHEN CONSULTANT FOR ALL KITCHEN EQUIPMENT CONNECTION POINT LOCATIONS PRIOR TO ROUGH-IN. IT IS THE INTENT FOR ALL WORK TO BE CONCEALED UNLESS DIRECTED OTHERWISE. CONTRACTORS ARE TO MAKE ALL FINAL CONNECTIONS TO KITCHEN EQUIPMENT (CONTRACTOR IS TO FURNISH AND INSTALL NEW VALVED CONNECTIONS, DAMPERS, FITTINGS, ETC. FOR EACH PIECE OF EQUIPMENT (NEW AND EXISTING)). CONTRACTOR IS TO PROVIDE FLEXIBLE PIPE CONNECTIONS FOR ALL MOVABLE PIECES OF EQUIPMENT. CONTRACTOR IS TO PROVIDE WASHABLE, PVC-INSULATED FITTED COVERS, AND JACKET (MAHVILLE "PERMEWELL SYSTEM", USDA AND FDA APPROVED, WHITE) ON ALL EXPOSED PIPING (NEW AND EXISTING). CONTRACTOR IS TO PERFORM A SITE VISIT PRIOR TO BID SUBMISSION AND INCLUDE ALL ASSOCIATED COSTS FOR ALL NEW AND EXISTING CONDITIONS. CONTRACTOR'S BID SUBMISSION IT TO BE CONSIDERED PROOF THAT ALL SURVEY AND VERIFICATION REQUIREMENTS HAVE BEEN MET.

DRAWING LIST

Drawing List- Plumbing					
NUMBER	NAME	Current Issue	Current Revision	Current Revision Date	Current Revision Description
P101	ROOF PLAN- PLUMBING	BID SET			
PD-101	GROUND FLOOR DEMOLITION PLAN- PLUMBING	BID SET			
P001	COVER SHEET- PLUMBING	BID SET			
P301	ENLARGED FLOOR PLANS- PLUMBING	BID SET			
P401	DETAILS- PLUMBING	BID SET			
P601	RISER DIAGRAMS-SANITARY/STORM	BID SET			

DRAWING SYMBOLS



NOTICE

THE SCHEDULES AND DRAWINGS REPRESENT ONLY CERTAIN REQUIREMENTS OF THE PROJECT. THERE ARE ADDITIONAL REQUIREMENTS IN THE SPECIFICATIONS BOOKLET WHICH THE CONTRACTOR IS BOUND TO PROVIDE. A SUPPLIER OR CONTRACTOR'S PRICING, WHICH IS BASED ONLY ON DRAWINGS OR SCHEDULES, MAY LEAVE IMPORTANT COSTS UNACCOUNTED FOR WHICH WILL ULTIMATELY BE THE CONTRACTOR OR SUPPLIER'S RESPONSIBILITY TO PROVIDE.

THE DELIVERY OF THIS DRAWING SHOULD NOT BE CONSTRUED TO PROVIDE AN EXPRESS WARRANTY OR GUARANTEE TO ANYONE THAT ALL THE DIMENSIONS AND DETAILS ARE EXACT OR TO INDICATE THAT THE USE OF THIS DRAWING IMPLIES THE REVIEW AND APPROVAL BY THE DESIGN PROFESSIONAL OF ANY FUTURE USE. ANY USE OF THIS INFORMATION WITHOUT THE WRITTEN APPROVAL BY THE DESIGN PROFESSIONAL IS AT THE SOLE RISK AND LIABILITY OF THE USER. THE DESIGN PROFESSIONAL RESERVES THE RIGHT TO REMOVE OUR PROFESSIONAL SEAL AND/OR TITLE BLOCK.

CHESTER UPLAND S.D.

TOBY FARMS INTERMEDIATE SCHOOL, HVAC and WINDOW UPGRADES

201 BRIDGEWATER ROAD
BROOKHAVEN, PA 19015

COVER SHEET- PLUMBING



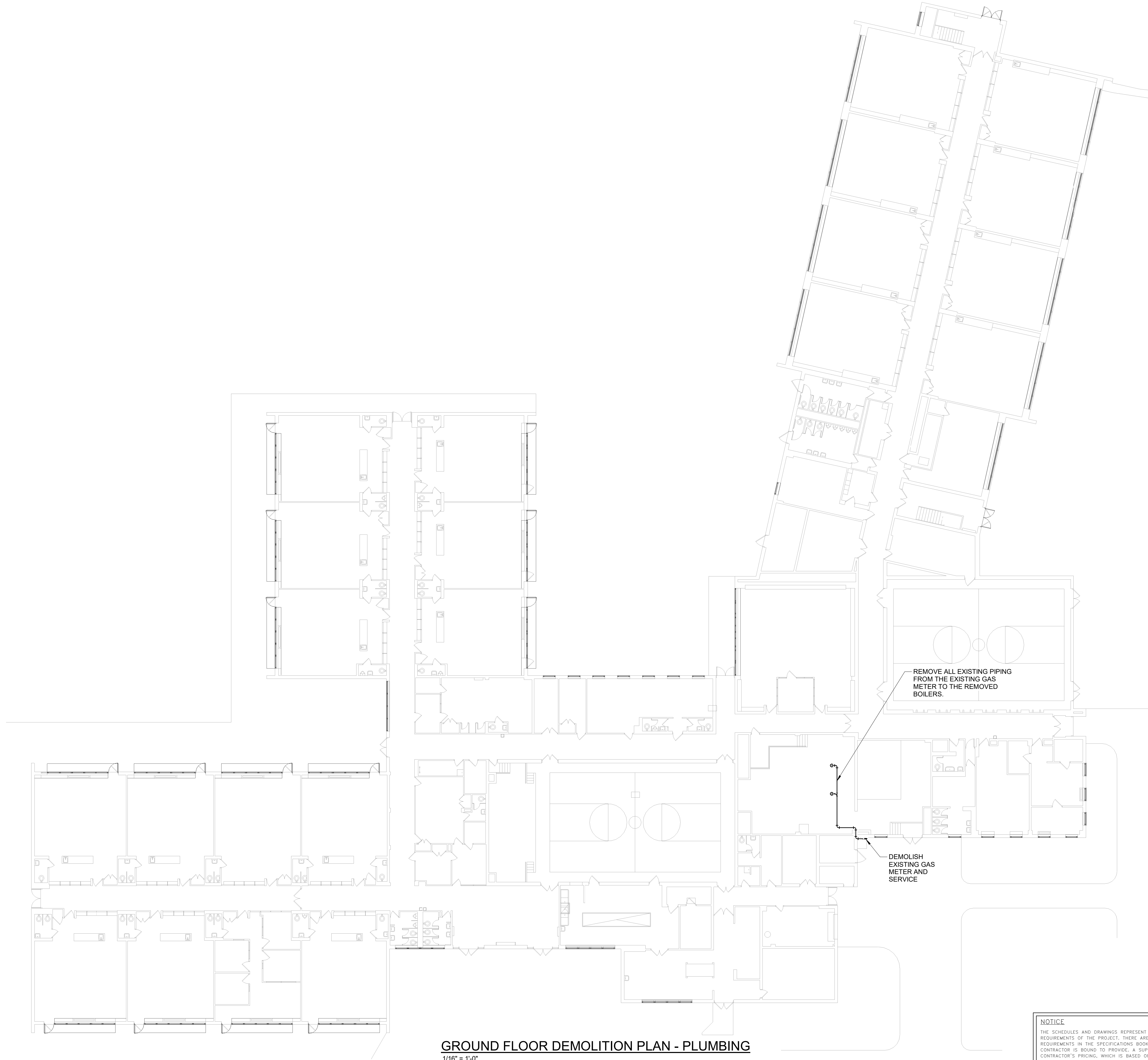
135 Eagle Street, Ambler, PA 19002
1950 Route 70, Suite 200, Marlton, NJ 08053
264.41188
www.mchughpa.com

100% Bid Set- 15 March 2023

PROJECT NO:	2022-327
DRAWN BY:	JS
DATE:	03/15/2023
SCALE:	AS NOTED

P001

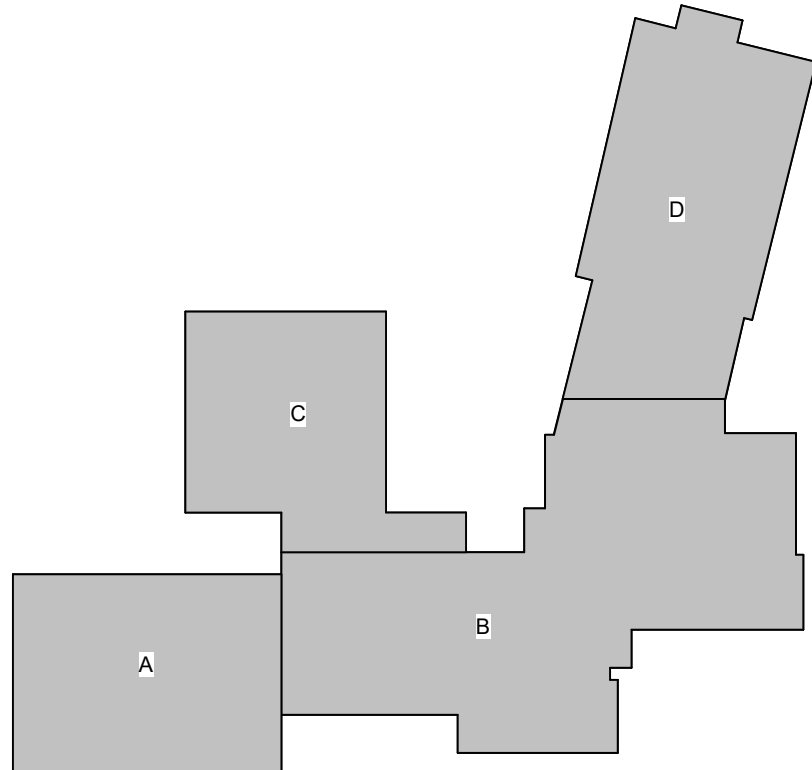




THE SCHEDULES AND DRAWINGS REPRESENT ONLY CERTAIN REQUIREMENTS OF THE PROJECT. THERE ARE ADDITIONAL REQUIREMENTS IN THE SPECIFICATIONS BOOKLET WHICH THE CONTRACTOR IS BOUND TO PROVIDE. A SUPPLIER OR CONTRACTOR'S PRICING, WHICH IS BASED ONLY ON DRAWINGS OR SCHEDULES, MAY LEAVE IMPORTANT COSTS UNACCOUNTED FOR WHICH WILL ULTIMATELY BE THE CONTRACTOR OR SUPPLIER'S RESPONSIBILITY TO PROVIDE.

THE DELIVERY OF THIS DRAWING SHOULD NOT BE CONSTRUED TO PROVIDE AN EXPRESS WARRANTY OR GUARANTEE TO ANYONE THAT ALL THE DIMENSIONS AND DETAILS ARE EXACT OR TO INDICATE THAT THE USE OF THIS DRAWING IMPLIES THE REVIEW AND APPROVAL BY THE DESIGN PROFESSIONAL OF ANY FUTURE USE. ANY USE OF THIS INFORMATION WITHOUT THE WRITTEN APPROVAL BY THE DESIGN PROFESSIONAL IS AT THE SOLE RISK AND LIABILITY OF THE USER. THE DESIGN PROFESSIONAL RESERVES THE RIGHT TO REMOVE OUR PROFESSIONAL SEAL AND/OR TITLE BLOCK.

KEY PLAN
NO SCALE



CHESTER UPLAND S.D.

TOBY FARMS INTERMEDIATE SCHOOL, HVAC and WINDOW UPGRADES

201 BRIDGEWATER ROAD
BROOKHAVEN, PA 19015

**GROUND FLOOR DEMOLITION PLAN-
PLUMBING**

PROJECT NO: 2022-327

DRAWN BY: Author

DATE: 03/15/2023

SCALE: AS NOTED

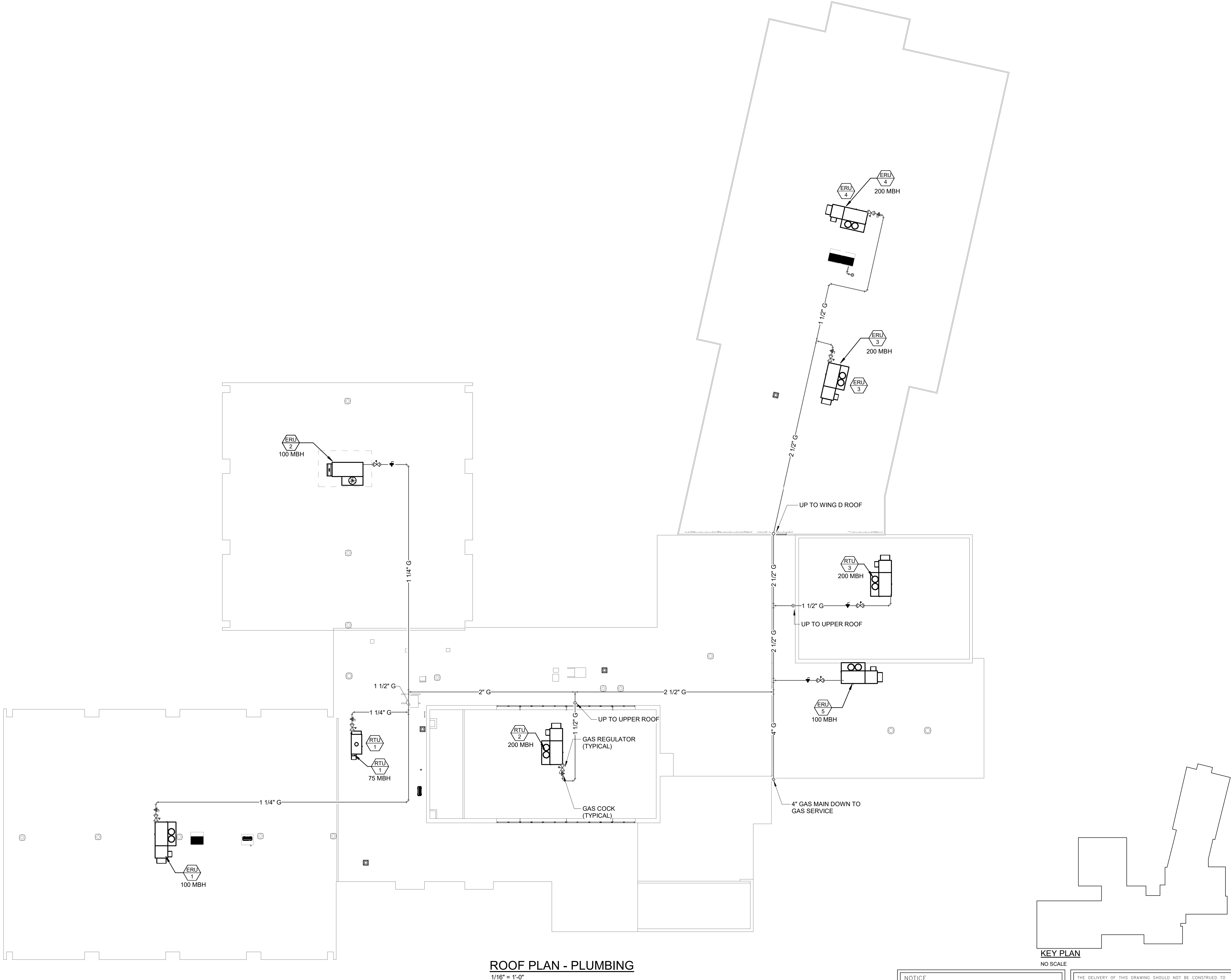


McHUGH
ENGINEERING ASSOCIATES INC.

136 Poplar Street, Ambler, PA 19002
1950 Route 70, Suite 102, Cherry Hill, NJ 08003
www.mchugheng.com
215.641.1950

100% Bid Set- 15 March 2023

Rev. No.	Date	Description
△		
△		
△		
△		
△		
△		
△		
REV.#	REV. Date	REV. Notes
		-



ROOF PLAN - PLUMBING
1/16" = 1'-0"

NOTICE
THE SCHEDULES AND DRAWINGS REPRESENT ONLY CERTAIN REQUIREMENTS OF THE PROJECT. THERE ARE ADDITIONAL REQUIREMENTS IN THE SPECIFICATIONS BOOKLET WHICH THE CONTRACTOR IS BOUND TO PROVIDE. A SUPPLIER OR CONTRACTOR'S PRICING, WHICH IS BASED ONLY ON DRAWINGS OR SCHEDULES, MAY LEAVE IMPORTANT COSTS UNACCOUNTED FOR WHICH WILL ULTIMATELY BE THE CONTRACTOR OR SUPPLIER'S RESPONSIBILITY TO PROVIDE.

THE DELIVERY OF THIS DRAWING SHOULD NOT BE CONSTRUED TO PROVIDE AN EXPRESS WARRANTY OR GUARANTEE TO ANYONE THAT ALL THE DIMENSIONS AND DETAILS ARE EXACT OR TO INDICATE THAT THE USE OF THIS DRAWING IMPLIES THE REVIEW AND APPROVAL BY THE DESIGN PROFESSIONAL OF ANY FUTURE USE. ANY USE OF THIS INFORMATION WITHOUT THE WRITTEN APPROVAL OF THE DESIGN PROFESSIONAL IS AT THE SOLE RISK AND LIABILITY OF THE USER. THE DESIGN PROFESSIONAL RESERVES THE RIGHT TO REMOVE OUR PROFESSIONAL SEAL AND/OR TITLE BLOCK.

CHESTER UPLAND S.D.

TOBY FARMS INTERMEDIATE SCHOOL, HVAC and WINDOW UPGRADES

201 BRIDGEWATER ROAD
BROOKHAVEN, PA 19015

ROOF PLAN- PLUMBING

PROJECT NO: 2022-327

DRAWN BY: JS

DATE: 03/15/2023

SCALE: AS NOTED



135 Eagle Street, Ambler, PA 19002
1950 Route 70, Brookhaven, PA 19003
264.41189

100% Bid Set- 15 March 2023

Rev. No.	Date	Description
1	10/28/22	SCHEMATIC DESIGN ISSUE
2		
3		
4		
5		
6		
7		
8		
9		
10		
11		
12		
13		
14		
15		
16		
17		
18		
19		
20		
21		
22		
23		
24		
25		
26		
27		
28		
29		
30		
31		
32		
33		
34		
35		
36		
37		
38		
39		
40		
41		
42		
43		
44		
45		
46		
47		
48		
49		
50		
51		
52		
53		
54		
55		
56		
57		
58		
59		
60		
61		
62		
63		
64		
65		
66		
67		
68		
69		
70		
71		
72		
73		
74		
75		
76		
77		
78		
79		
80		
81		
82		
83		
84		
85		
86		
87		
88		
89		
90		
91		
92		
93		
94		
95		
96		
97		
98		
99		
100		
101		
102		
103		
104		
105		
106		
107		
108		
109		
110		
111		
112		
113		
114		
115		
116		
117		
118		
119		
120		
121		
122		
123		
124		
125		
126		
127		
128		
129		
130		
131		
132		
133		
134		
135		
136		
137		
138		
139		
140		
141		
142		
143		
144		
145		
146		
147		
148		
149		
150		
151		
152		
153		
154		
155		
156		
157		
158		
159		
160		
161		
162		
163		
164		
165		
166		
167		
168		
169		
170		
171		
172		
173		
174		
175		
176		
177		
178		
179		
180		
181		
182		
183		
184		
185		
186		
187		
188		
189		
190		
191		
192		
193		
194		
195		
196		
197		
198		
199		
200		
201		
202		
203		
204		
205		
206		
207		
208		
209		
210		
211		
212		
213		
214		
215		
216		
217		
218		
219		
220		
221		
222		
223		
224		
225		
226		
227		
228		
229		
230		
231		
232		
233		
234		
235		
236		
237		
238		
239		
240		
241		
242		
243		
244		
245		
246		
247		
248		
249		
250		
251		
252		
253		
254		
255		
256		
257		
258		
259		
260		
261		
262		
263		
264		
265		
266		
267		
268		
269		
270		
271		
272		
273		
274		
275		
276		
277		
278		
279		
280		
281		
282		
283		
284		
285		
286		
287		
288		
289		
290		
291		
292		
293		
294		
295		
296		
297		
298		
299		
300		
301		
302		
303		
304		
305		
306		
307		
308		
309		
310		
311		
312		
313		
314		
315		
316		
317		
318		
319		
320		
321		
322		
323		
324		
325		
326		
327		
328		
329		
330		
331		
332		
333		
334		
335		
336		
337		
338		
339		
340		
341		
342		
343		
344		
345		
346		
347		
348		
349		
350		
351		
352		
353		
354		
355		
356		
357		
358		
359		
360		
361		
362		
363		
364		
365		
366		
367		
368		
369		
370		
371		
372		
373		
374		
375		
376		
377		
378		
379		
380		
381		
382		
383		
384		
385		
386		
387		
388		
389		
390		
391		
392		
393		
394		
395		
396		
397		
398		
399		
400		
401		
402		
403		
404		
405		
406		
407		
408		
409		
410		
411		
412		
413		
414		
415		
416		
417		
418		
419		
420		
421		
422		
423		
424		
425		
426		
427		
428		
429		
430		
431		
432		
433		
434		
435		
436		
437		
438		
439		
440		
441		
442		
443		
444		
445		
446		
447		
448		
449		
450		
451		
452		
453		
454		
455		
456		
457		
458		
459		
460		
461		
462		
463		
464		
465		
466		
467		
468		
469		
470		
471		
472		
473		
474		
475		
476		
477		
478		
479		
480		
481		
482		
483		
484		
485		
486		
487		
488		
489		
490		
491		
492		
493		
494		
495		
496		
497		
498		
499		
500		
501		
502		
503		
504		
505		
506		
507		
508		
509		
510		
511		
512		
513		
514		
515		
516		
517		
518		
519		
520		
521		
522		
523		
524		
525		
526		
527		
528		
529		
530		
531		
532		
533		
534		
535		
536		
537		
538		
539		
540		
541		
542		
543		
544		
545		
546		
547		
548		
549		
550		
551		
552		
553		
554		
555		
556		
557		
558		
559		
560		
561		
562		
563		
564		
565		
566		
567		
568		
569		
570		
571		
572		
573		
574		
575		
576		
577		
578		
579		
580		
581		
582		
583		
584		
585		
586		
587		
588		
589		
590		
591		
592		
593		
594		
595		
596		
597		
598		
599		
600		
601		
602		
603		
604		
605		
606		
607		
608		
609		
610		
611		
612		
613		
614		
615		
616		
617		
618		
619		
620		
621		
622		
623	</	



ENLARGED BOILER ROOM- PLUMBING

NOTICE

THE SCHEDULES AND DRAWINGS REPRESENT ONLY CERTAIN REQUIREMENTS OF THE PROJECT. THERE ARE ADDITIONAL REQUIREMENTS IN THE SPECIFICATIONS BOOKLET WHICH THE CONTRACTOR IS BOUND TO PROVIDE. A SUPPLIER OR CONTRACTOR'S PRICING, WHICH IS BASED ONLY ON DRAWINGS OR SCHEDULES, MAY LEAVE IMPORTANT COSTS UNACCOUNTED FOR WHICH WILL ULTIMATELY BE THE CONTRACTOR OR SUPPLIER'S RESPONSIBILITY TO PROVIDE.

THE DELIVERY OF THIS DRAWING SHOULD NOT BE CONSTRUED TO PROVIDE AN EXPRESS WARRANTY OR GUARANTEE TO ANYONE THAT ALL THE DIMENSIONS AND DETAILS ARE EXACT OR TO INDICATE THAT THE USE OF THIS DRAWING IMPLIES THE REVIEW AND APPROVAL BY THE DESIGN PROFESSIONAL OF ANY FUTURE USE. ANY USE OF THIS INFORMATION WITHOUT THE WRITTEN APPROVAL BY THE DESIGN PROFESSIONAL IS AT THE SOLE RISK AND LIABILITY OF THE USER. THE DESIGN PROFESSIONAL RESERVES THE RIGHT TO REMOVE OUR PROFESSIONAL SEAL AND/OR TITLE BLOCK.

CHESTER UPLAND S.D.

TOBY FARMS INTERMEDIATE SCHOOL, HVAC and WINDOW UPGRADES

201 BRIDGEWATER ROAD
BROOKHAVEN, PA 19015

ENLARGED FLOOR PLANS- PLUMBING

PROJECT NO: 2022-327

DRAWN BY: JS

DATE: 03/15/2023

SCALE: AS NOTED

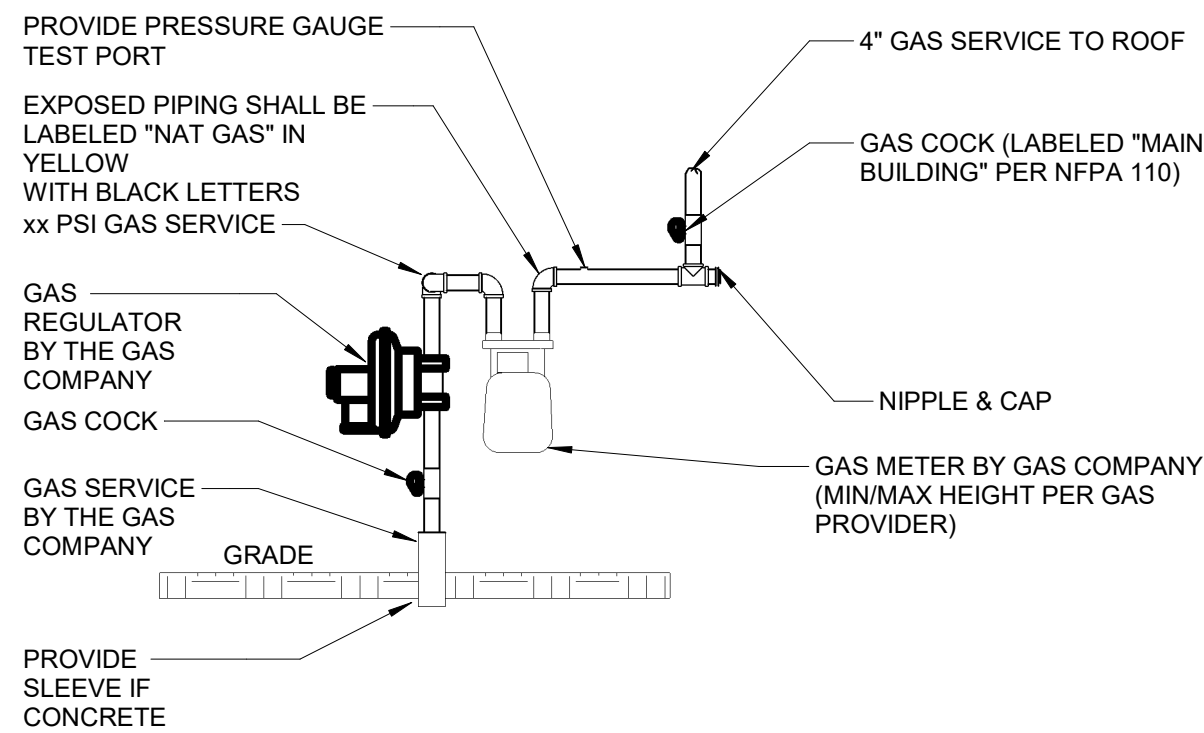


McHUGH
ENGINEERING ASSOCIATES INC.

136 Poplar Street, Ambler, PA 19002
1950 Route 70, Suite 102, Cherry Hill, NJ 08003
www.mchugheng.com
215.641.1158

100% Bid Set- 15 March 2023

Rev. No.	Date	Description
△	10/28/22	SCHEMATIC DESIGN ISSUE
△		
△		
△		
△		
△		
△		
REV #	REV. Date	REV. Notes
		-

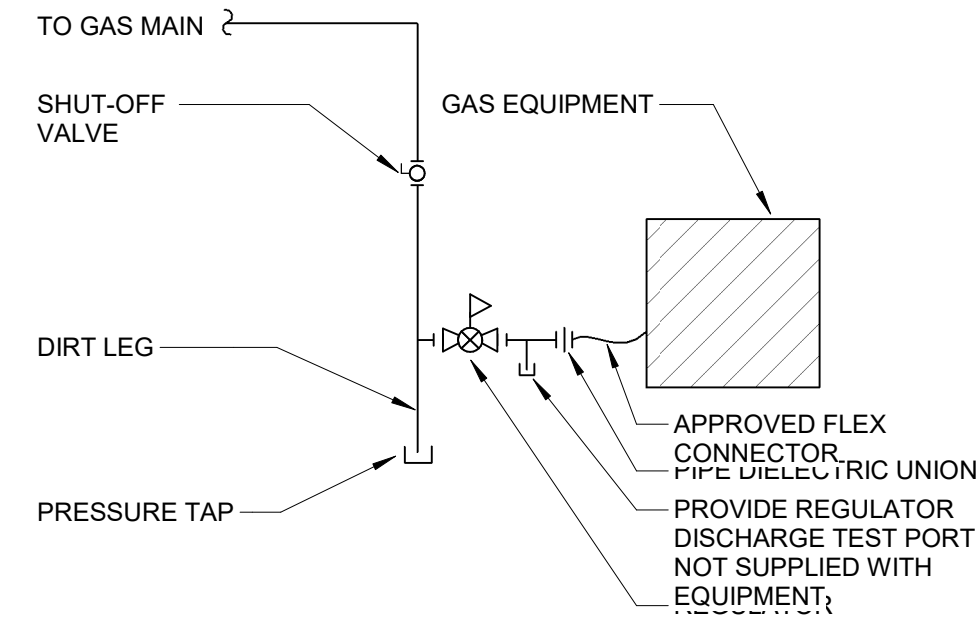


GAS METER DETAIL

SCALE: NONE

NOTES:

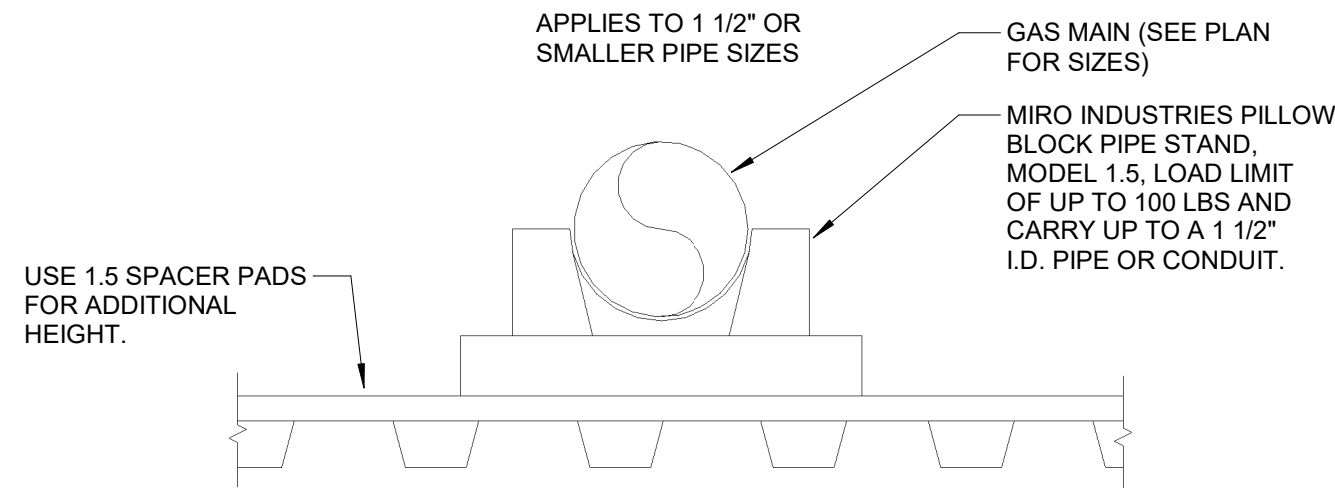
1. PROVIDE METER LABELS. METER IDENTIFICATION PER IFGC 401.7 IF MULTIPLE METERS
2. PROVIDE BOLLARDS IN TRAFFIC AREAS.



TYPICAL GAS EQUIPMENT SUPPLY PIPING DETAIL

NOTES:

1. GAS PIPING EQUIPMENT CONNECTIONS SHALL COMPLY WITH UTILITY COMPANY REQUIREMENTS. PROVIDE PRESSURE REDUCERS AS REQUIRED.



GAS PIPING NOTE:

1. GUIDE HOLES ARE PROVIDED AT THE TOP OF THE CRADLE FOR LOOSE INSTALLATION OF "PLUMBERS TAPE USING 1/2" #10 SCREWS TO PREVENT SEPARATION OF THE PIPE STAND.
2. ALL PIPING AND HANGERS SHALL BE CLEAN AND FREE OF FOREIGN MATERIAL AND COATED WITH RED, LEAD PIGMENTED PRIMER AND TWO COATS OF HIGH GLOSS ALKYD ENAMEL (COLOR BY ARCHITECT).
3. PROVIDE SUPPORT AT 10'-0" O.C. FOR 1 1/4" AND LARGER AND AT ALL FITTINGS.
4. PROVIDE SUPPORT AT 8'-0" O.C. FOR 3/4" AND 1" AND AT ALL FITTINGS.
5. PROVIDE SUPPORT AT 6'-0" O.C. FOR 1/2" AND AT ALL FITTINGS.
6. PIPE SHALL BE MOUNTED NO LESS THAN 6" ABOVE GRADE OR ROOF SURFACE.

GAS PIPE SUPPORT ON ROOF

SCALE: NONE

TOBY FARMS INTERMEDIATE SCHOOL, HVAC and WINDOW UPGRADES

201 BRIDGEWATER ROAD
BROOKHAVEN, PA 19015

DETAILS- PLUMBING

PROJECT NO: 2022-327

DRAWN BY: JS

DATE: 03/15/2023

SCALE: AS NOTED



136 Poplar Street, Ambler, PA 19002
1950 Route 70, Suite 102, Cherry Hill, NJ 08003
www.mchugheng.com
215.641.1950

100% Bid Set- 15 March 2023

Rev No.	Date	Description
△	10/8/22	SCHEMATIC DESIGN ISSUE
△		
△		
△		
△		
△		
REV #	REV. Date	REV. Notes

NOTICE

THE SCHEDULES AND DRAWINGS REPRESENT ONLY CERTAIN REQUIREMENTS OF THE PROJECT. THERE ARE ADDITIONAL REQUIREMENTS IN THE SPECIFICATIONS BOOKLET WHICH THE CONTRACTOR IS BOUND TO PROVIDE. A SUPPLIER OR CONTRACTOR'S PRICING, WHICH IS BASED ONLY ON DRAWINGS OR SCHEDULES, MAY LEAVE IMPORTANT COSTS UNACCOUNTED FOR WHICH WILL ULTIMATELY BE THE CONTRACTOR OR SUPPLIER'S RESPONSIBILITY TO PROVIDE.

THE DELIVERY OF THIS DRAWING SHOULD NOT BE CONSTRUED TO PROVIDE AN EXPRESS WARRANTY OR GUARANTEE TO ANYONE THAT ALL THE DIMENSIONS AND DETAILS ARE EXACT OR TO INDICATE THAT THE USE OF THIS DRAWING IMPLIES THE REVIEW AND APPROVAL BY THE DESIGN PROFESSIONAL OF ANY FUTURE USE. ANY USE OF THIS INFORMATION WITHOUT THE WRITTEN APPROVAL BY THE DESIGN PROFESSIONAL IS AT THE SOLE RISK AND LIABILITY OF THE USER. THE DESIGN PROFESSIONAL RESERVES THE RIGHT TO REMOVE OUR PROFESSIONAL SEAL AND/OR TITLE BLOCK.

CHESTER UPLAND S.D.

TOBY FARMS INTERMEDIATE SCHOOL, HVAC and WINDOW UPGRADES

201 BRIDGEWATER ROAD
BROOKHAVEN, PA 19015

SCHEDULES- PLUMBING

PROJECT NO: 2022-327

DRAWN BY: JS

DATE: 03/15/2023

SCALE: AS NOTED



McHUGH
ENGINEERING ASSOCIATES INC.

136 Poplar Street, Ambler, PA 19002
1950 Route 70, Suite 102, Cherry Hill, NJ 08003
www.mchugheng.com
215.641.1950

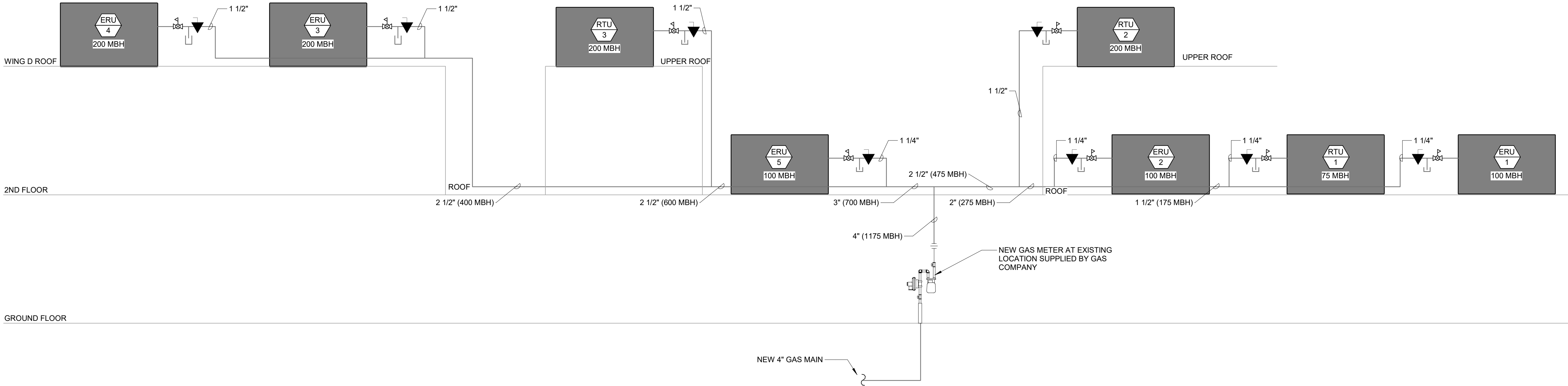
100% Bid Set- 15 March 2023

Plans, specifications, reports, documents, or other information recorded on or transmitted as electronic media are subject to undetectable alteration, either intentional or unintentional, due to beyond other causes, transmission, conversion, or alteration of the documents, or provided for alternative purposes only and not as an end product nor as a record document. Any reliance thereon is deemed to be unreasonable and unenforceable.

All drawings, specifications, and related documents are copyright of the architect and must be returned upon request; reproduction or drawings, specifications, and related documents, in whole is forbidden without the architects written permission.

Do not scale drawings

Rev. No.	Date	Description
△	10/28/22	SCHEMATIC DESIGN ISSUE
△		
△		
△		
△		
△		
△		
REV.#	REV. DATE	REV. NOTES



NATURAL GAS RISER DIAGRAM
12" = 1'-0"

GAS RISER DIAGRAM NOTES

1. THE GAS PIPING WAS SIZED USING THE INTERNATIONAL FUEL GAS CODE 2018, TABLE 402.4(1).
LONGEST PIPING DISTANCE - 425'.
TOTAL GAS LOAD - 1,175 MBH.
1. PROVIDE PRESSURE REGULATORS ALL GAS FIRED EQUIPMENT. VENT THE REGULATOR TO THE OUTDOORS.
2. PROVIDE A GAS SHUT OFF VALVE AT EACH PIECE OF EQUIPMENT.
3. ALL EXTERIOR GAS PIPING SHALL BE PAINTED WITH ONE COAT OF PRIMER AND TWO COATS OF ENAMEL PAINT.

NOTICE

THE SCHEDULES AND DRAWINGS REPRESENT ONLY CERTAIN REQUIREMENTS OF THE PROJECT. THERE ARE ADDITIONAL REQUIREMENTS IN THE SPECIFICATIONS BOOKLET WHICH THE CONTRACTOR IS BOUND TO PROVIDE. A SUPPLIER OR CONTRACTOR'S PRICING, WHICH IS BASED ONLY ON DRAWINGS OR SCHEDULES, MAY LEAVE IMPORTANT COSTS UNACCOUNTED FOR WHICH WILL ULTIMATELY BE THE CONTRACTOR OR SUPPLIER'S RESPONSIBILITY TO PROVIDE.

THE DELIVERY OF THIS DRAWING SHOULD NOT BE CONSTRUED TO PROVIDE AN EXPRESS WARRANTY OR GUARANTEE TO ANYONE THAT ALL THE DIMENSIONS AND DETAILS ARE EXACT OR TO INDICATE THAT THE USE OF THIS DRAWING IMPLIES THE REVIEW AND APPROVAL BY THE DESIGN PROFESSIONAL OF ANY FUTURE USE. ANY USE OF THIS INFORMATION WITHOUT THE WRITTEN APPROVAL BY THE DESIGN PROFESSIONAL IS AT THE SOLE RISK AND LIABILITY OF THE USER. THE DESIGN PROFESSIONAL RESERVES THE RIGHT TO REMOVE OUR PROFESSIONAL SEAL AND/OR TITLE BLOCK.

CHESTER UPLAND S.D.

TOBY FARMS INTERMEDIATE SCHOOL, HVAC and WINDOW UPGRADES

201 BRIDGEWATER ROAD
BROOKHAVEN, PA 19015

RISER DIAGRAMS-SANITARY/STORM

PROJECT NO: 2022-327

DRAWN BY: JS

DATE: 03/15/2023

SCALE: AS NOTED



135 Poplar Street, Ambler, PA 19002
1950 Route 70, Suite 200, Ambler, NJ 08003
www.mchugheng.com
264.411898

100% Bid Set- 15 March 2023

Please, specifications, reports, documents, or other information recorded on or transmitted as electronic data shall be maintained in accordance with the original documents. In the event of any alteration, either intentional or unintentional, due to, among other causes, transmission, conversion, alteration, or any other cause, the original documents shall prevail. All such documents are provided for your information only and shall not be used as a product nor as a record document. Any reliance on such documents shall be deemed to be unreasonable and unverifiable.

All drawings, specifications, and related documents are copyright of the architect and must be used in accordance with the terms of the license. Specifications and related documents in part or in whole are not to be reproduced without the written permission of the architect. Do not scale drawings.

Rev. No.	Date	Description
△	10/28/22	SCHEMATIC DESIGN ISSUE
△		
△		
△		
△		
△		
△		
REV #	REV. Date	REV. Notes