

PROJECT TEAM

**Owner**  
Tredyffrin/Easttown School District  
940 West Valley Road, Suite 1700  
Wayne, PA 19087  
610-240-1900

**Architect**  
Heckendorn Shiles Architects  
347 East Conestoga Road  
Wayne, PA 19087  
610-994-3500

**Structural Engineer**  
A.W. Lookup Corporation  
500 Fayette Street, Suite 100  
Conshohocken, PA 19428  
610-825-2600

**MEPFP Engineer**  
Schiller and Hersh Assoc., Inc.  
636 W Skippack Pike, Suite 200  
Blue Bell, PA 19422

**Site/Civil**  
Pennoni Assoc., Inc.  
158 W Gay Street, Suite 300  
West Chester, PA 19382  
610-429-8907

**Food Service**  
Corsi Associates  
1001 Baltimore Pike, Suite 308  
Springfield, PA 19064  
610-541-0822

**IT Network / CCTV**  
Teranet Consulting Services  
2 Colchester Place  
Newtown, OA 18940  
267-719-3307

PROJECT

**TESD 1200 W. Swedesford Road  
Berwyn, PA 19312  
Tredyffrin Township  
Chester County, PA**

**HSA Project #23-037**

ISSUE HISTORY

3	2025-05-14	ADDENDUM 3
BI	2025-03-28	BID ISSUE
MARK	DATE	DESCRIPTION


SHEET TITLE

**ABBREVIATIONS,  
GENERAL NOTES,  
DRAWING LIST**

DRAWING NUMBER

**T001**

LEGEND

 WIRELESS ACCESS POINT  
LEADER, IF PRESENT, IDENTIFIES  
APPROX. MOUNTING LOCATION

 LOGICAL COMPONENT GROUP

 CONNECTION GROUP

 MULTIPLE CABLES

 NORTH ARROW

ABBREVIATIONS

ANTENNA  
APPROXIMATE  
BASIS OF DESIGN  
CATEGORY  
CEILING  
CLOSED CIRCUIT TELEVISION  
DIRECT ATTACH COPPER  
ELECTRICAL CONTRACTOR  
EXISTING  
FIBER TERMINATION PANEL  
IDENTIFICATION  
INTERMEDIATE DATA FRAME  
INFORMATION TECHNOLOGY  
JUNCTION BOX  
LONG REACH  
MAIN DATA FRAME  
MOUNTING  
NETWORK OPERATIONS CENTER  
NOT TO SCALE  
OUTSIDE WALL  
PATCH PANEL  
PROGRESS ISSUE  
RACK  
SMALL FORM-FACTOR PLUGGABLE  
SHIELDED TWISTED PAIR  
SINGLE MODE FIBER  
SPECIFICATIONS  
SWITCH  
TYPICAL  
ULTRA PHYSICAL CONTACT  
UNINTERRUPTIBLE POWER SUPPLY  
VOICE OVER INTERNET PROTOCOL  
WALL  
WIRELESS ACCESS POINT

ANT  
APPROX  
BOD  
CAT  
C  
CCTV  
DAC  
EC  
E  
FTP  
ID  
IDF  
IT  
J-BOX  
LR  
MDF  
MNT  
NOC  
NTS  
OW  
PP  
PI  
RK  
SFP  
STP  
SMF  
SPECS  
SW  
TYP  
UPC  
UPS  
VOIP  
W  
WAP

GENERAL NOTES

- REFER TO E-SERIES DRAWINGS FOR DETAILS ANNOTATED "EC)"
- COORDINATE FINAL CEILING WAP MOUNTING LOCATIONS AND ATTACHMENTS IN THE FIELD TO OPTIMIZE FOR COVERAGE AND SERVICEABILITY WHILE AVOIDING CONFLICTS WITH OTHER FIXTURES, DEVICES, AND EQUIPMENT
- STRUCTURED CABLING, CONDUIT, BACKBOXES, FACEPLATES, AND RJ-45 DATA JACK AND PATCH PANEL TERMINATIONS BY EC
- TELECOM RACK, COPPER AND FIBER PATCH PANELS IN MDF AND EACH IDF BY EC
- PROVIDE WHITE JACKET CAT 6A STP PATCH CABLE FROM FACE PLATE (EC) FOR EACH INDOOR WAP
- PROVIDE CAT 6A STP INDUSTRIAL TEMPERATURE RATED PATCH CABLE IN FLEXIBLE CONDUIT BETWEEN EACH J-BOX (EC) AND OW MOUNTED WAP

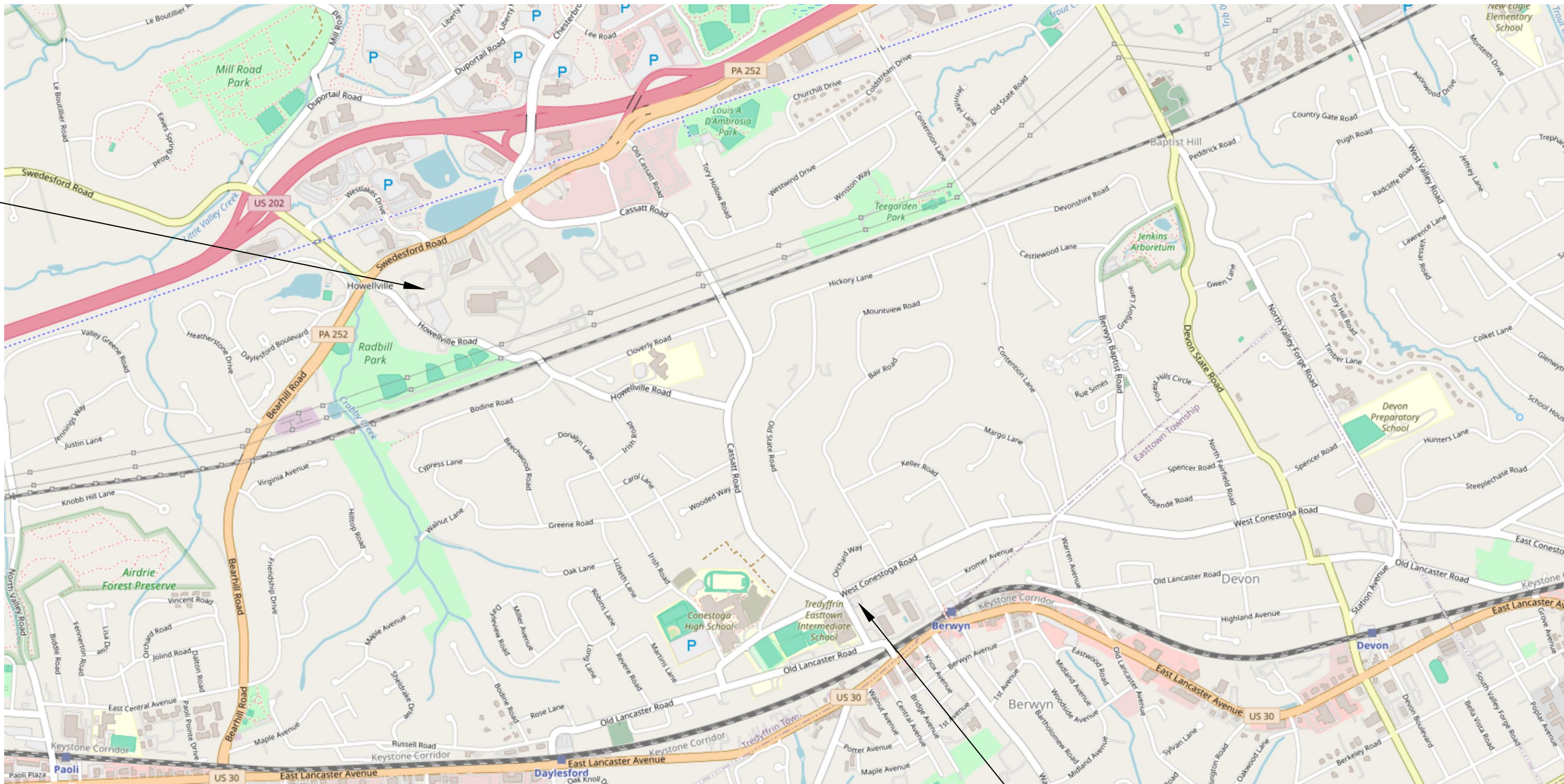
WAP SCHEDULE

ID	MANUFACTURER	MODEL
A	HPE ARUBA NETWORKING	AP-735
B	HPE ARUBA NETWORKING	AP-675

DRAWING LIST

NUMBER	NAME	2025-03-28 BID ISSUE	2025-05-14 ADDENDUM 3	
T001	ABBREVIATIONS, GENERAL NOTES, DRAWING LIST	●	●	
T101	FIRST FLOOR NETWORK PLAN	●	●	
T102	SECOND FLOOR NETWORK PLAN	●		
T103	THIRD FLOOR NETWORK PLAN	●		
T600	SINGLE LINE DIAGRAM	●		

SITE LOCATION MAP



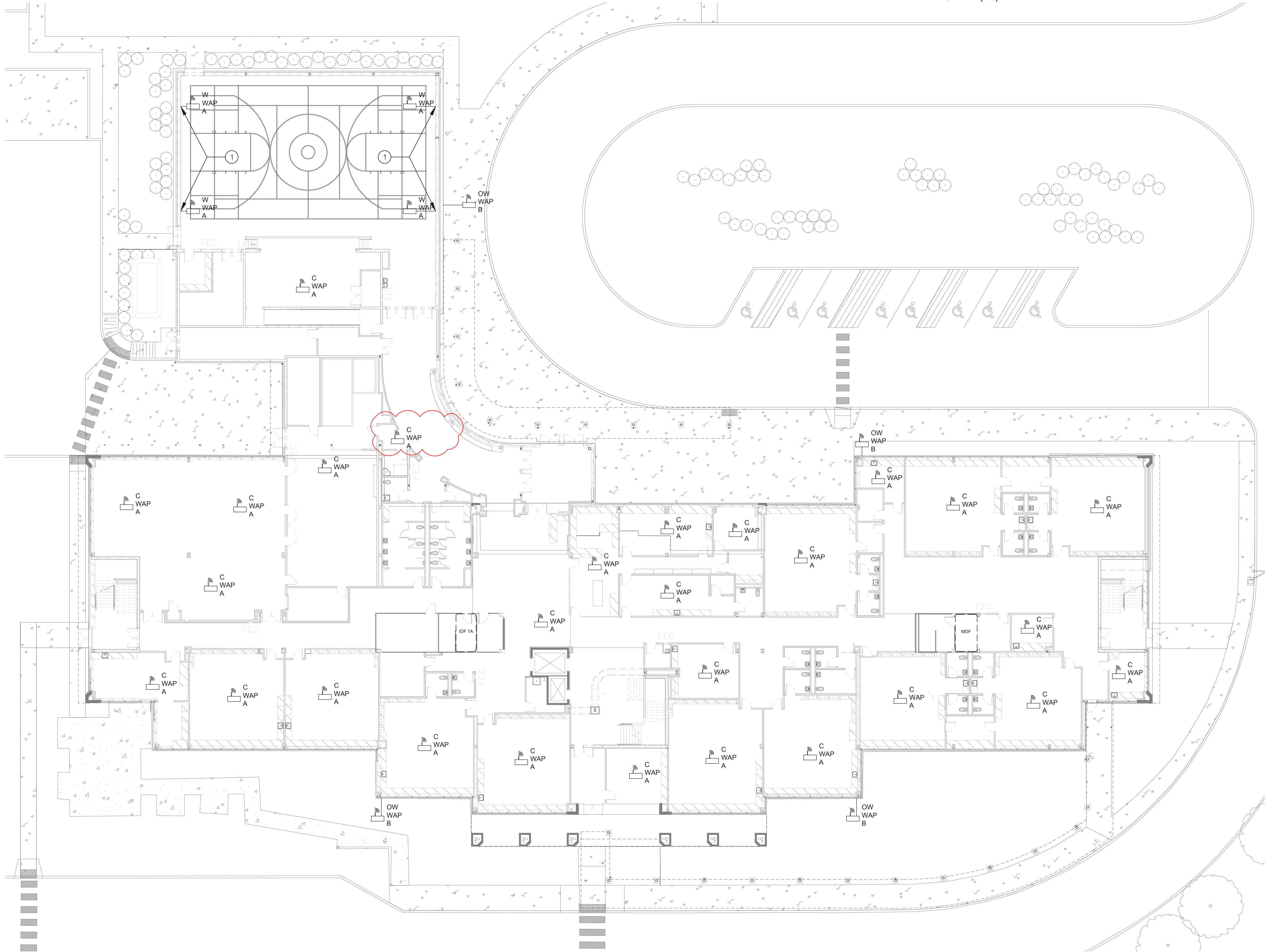
1200 W. Swedesford Road

NOC



KEYED SHEET NOTES

- ① EACH WALL-MOUNT WAP IN GYMNASIUM PROTECTED BY NON-METALLIC ENCLOSURE OR SHIELD (EC)



PROJECT TEAM

**Owner**  
Tredyffrin/Easttown School District  
940 West Valley Road, Suite 1700  
Wayne, PA 19087  
610-240-1900

**Architect**  
Heckendorn Shiles Architects  
347 East Conestoga Road  
Wayne, PA 19087  
610-994-3500

**Structural Engineer**  
A.W. Lookup Corporation  
500 Fayette Street, Suite 100  
Conshohocken, PA 19428  
610-825-2600

**MEPFP Engineer**  
Schiller and Hersh Assoc., Inc.  
636 W Skippack Pike, Suite 200  
Blue Bell, PA 19422

**Site/Civil**  
Pennoni Assoc., Inc.  
158 W Gay Street, Suite 300  
West Chester, PA 19382  
610-429-8907

**Food Service**  
Corsi Associates  
1001 Baltimore Pike, Suite 308  
Springfield, PA 19064  
610-541-0822

**IT Network / CCTV**  
Teranet Consulting Services  
2 Colchester Place  
Newtown, PA 18940  
267-719-3307

PROJECT

**TESD 1200 W Swedesford Road  
Berwyn, PA 19312  
Tredyffrin Township  
Chester County, PA**

**HSA Project #23-037**

ISSUE HISTORY

3	2025-05-14	ADDENDUM 3
BI	2025-03-28	BID ISSUE
MARK	DATE	DESCRIPTION

SHEET TITLE

**FIRST FLOOR  
NETWORK PLAN**

**NOT FOR  
CONSTRUCTION**



DRAWING NUMBER

**T101**