

3/17/2025 5:05:22 PM



CONSULTANT:

DCIU
Empowering Partnerships For Education

ISSUE DATES
DATE: 03/17/2025
DESCRIPTION: BID SET

PROJ # : 21-DCIU-03
DRAWN BY : Author

SHEET TITLE:
CORRIDOR INTERIOR ELEVATIONS

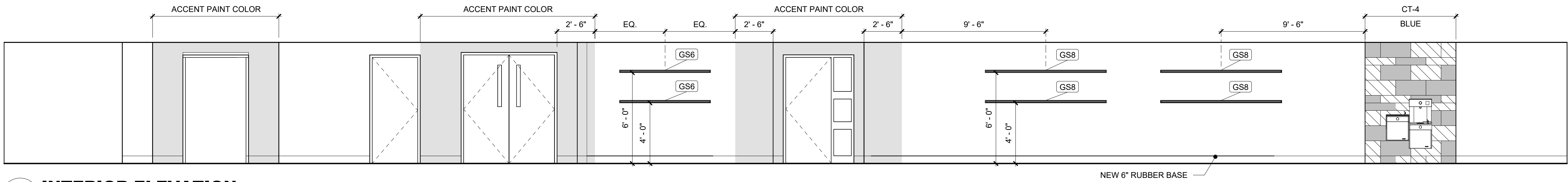
SHEET NUMBER:
A8.32

BID SET

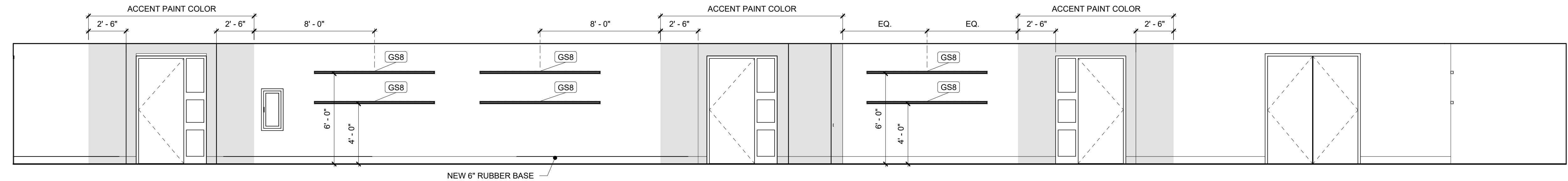
MAROTTA/MAN
ARCHITECTS
WWW.MAROTTAMAIN.COM

THIS DRAWING IS THE PROPERTY OF THE ARCHITECT. IT IS TO BE USED ONLY FOR THE PROJECT AND SITE SPECIFICALLY IDENTIFIED HEREIN. ANY REUSE OR REPRODUCTION WITHOUT WRITTEN PERMISSION IS PROHIBITED.

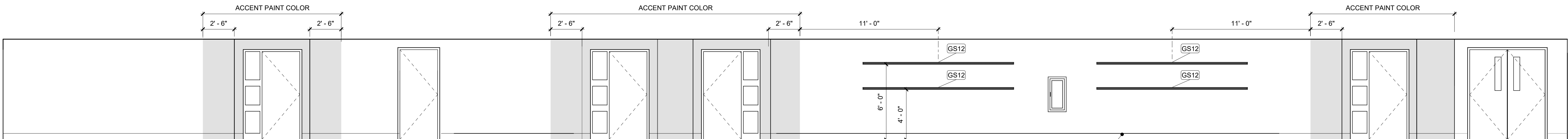
3/17/2025 5:05:28 PM



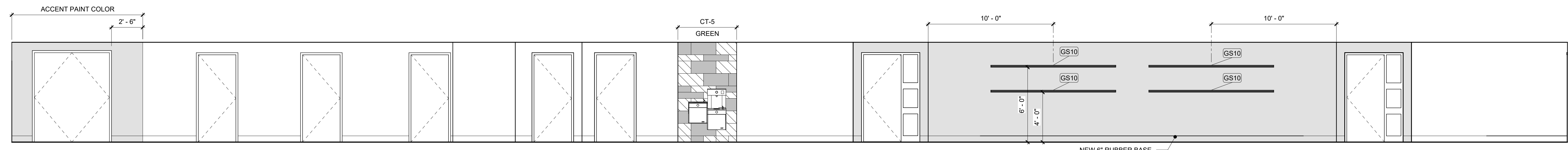
1 INTERIOR ELEVATION
A8.33 1/4" = 1'-0"



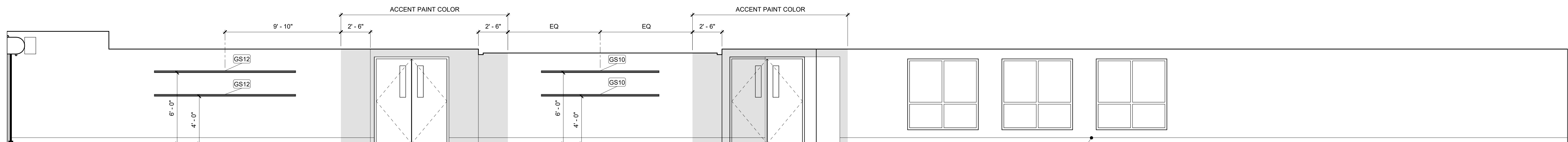
2 INTERIOR ELEVATION
A8.33 1/4" = 1'-0"



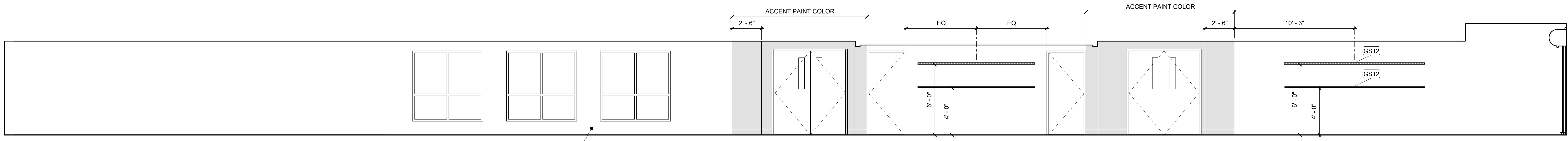
3 INTERIOR ELEVATION
A8.33 1/4" = 1'-0"



4 INTERIOR ELEVATION
A8.33 1/4" = 1'-0"



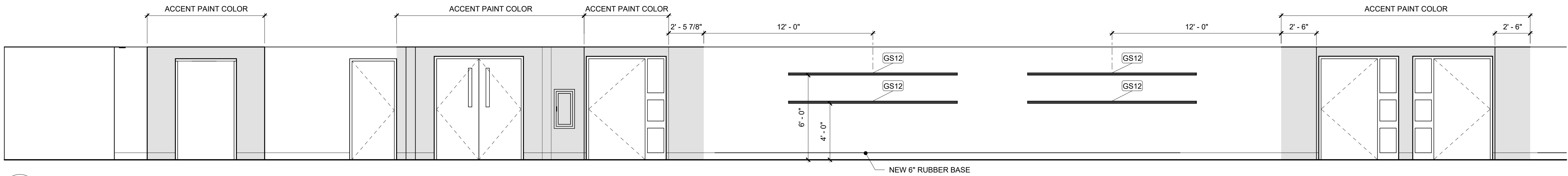
5 INTERIOR ELEVATION
A8.33 1/4" = 1'-0"



6 INTERIOR ELEVATION
A8.33 1/4" = 1'-0"

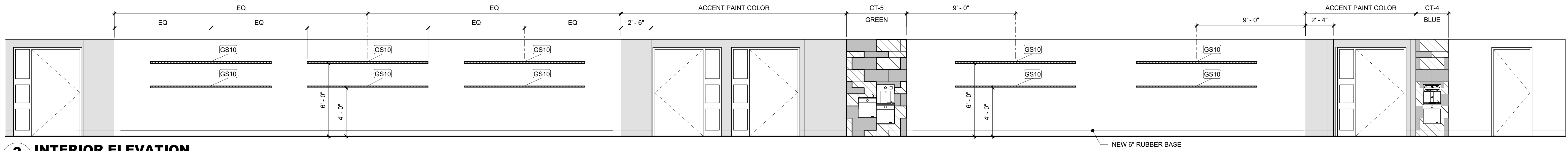


3/17/2025 5:06:01 PM



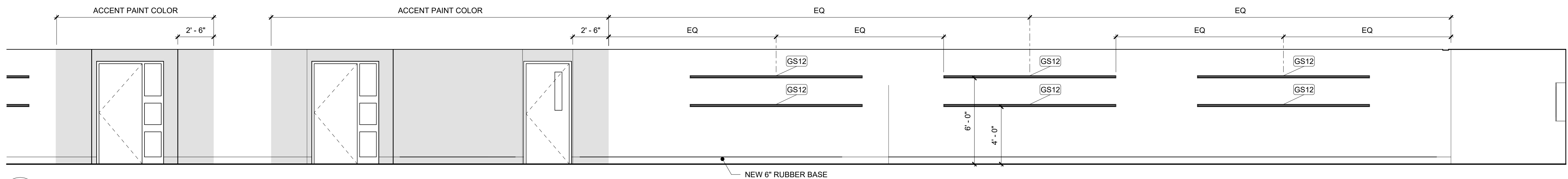
1 INTERIOR ELEVATION
A8.36 / 1/4" = 1'-0"

B22 CORRIDOR



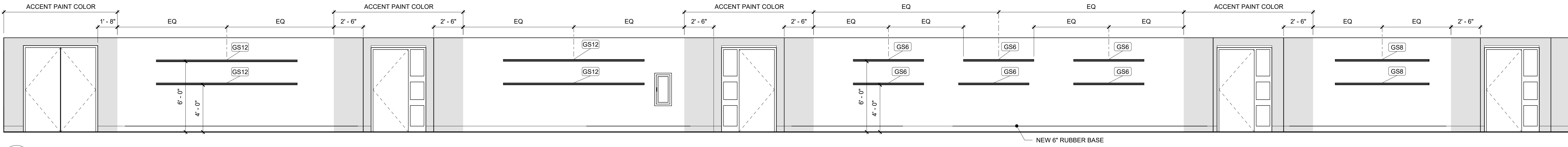
2 INTERIOR ELEVATION
A8.36 / 1/4" = 1'-0"

B22 CORRIDOR



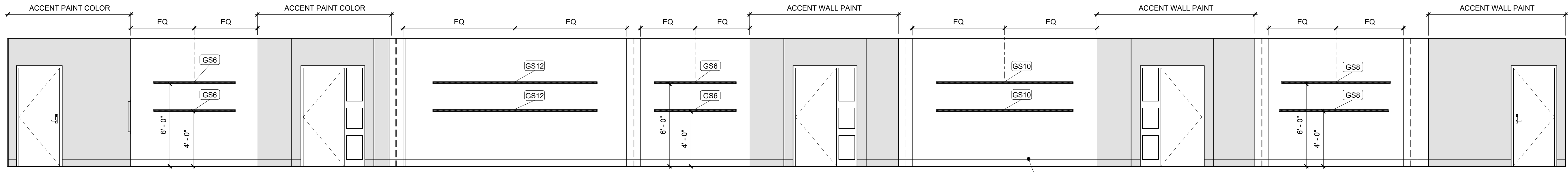
3 INTERIOR ELEVATION
A8.36 / 1/4" = 1'-0"

B22 CORRIDOR



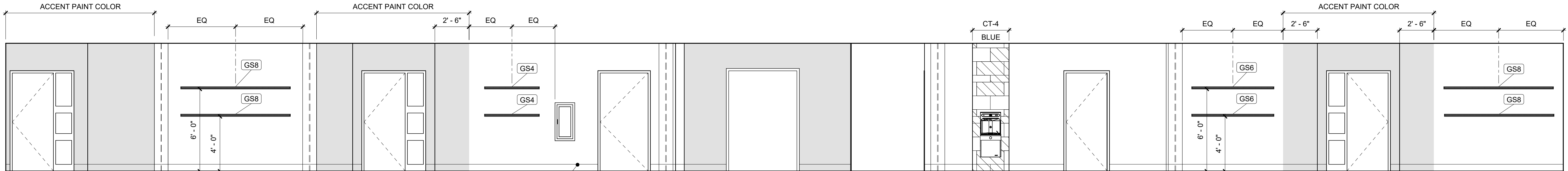
4 INTERIOR ELEVATION
A8.36 / 1/4" = 1'-0"

B22 CORRIDOR



5 INTERIOR ELEVATION
A8.36 / 1/4" = 1'-0"

A31 CORRIDOR



6 INTERIOR ELEVATION
A8.36 / 1/4" = 1'-0"

A31 CORRIDOR

SEAL:

MAROTTA/MAIN
ARCHITECTS

WWW.MAROTTAMAIN.COM

THIS DRAWING IS THE PROPERTY OF THE ARCHITECT. IT IS TO BE USED ONLY FOR THE PROJECT AND SITE SPECIFICALLY IDENTIFIED HEREIN. NO PART OF THIS DRAWING IS TO BE REPRODUCED OR TRANSMITTED IN ANY FORM WITHOUT WRITTEN PERMISSION.

CONSULTANT:

DCIU
Empowering Partnerships For Education

ADDITIONS AND RENOVATIONS TO THE
FOLCROFT TECHNICAL SCHOOL
DELAWARE COUNTY
INTERMEDIATE UNIT
701 HENDERSON BLVD.
FOLCROFT, PA 19032

ISSUE DATES

DATE	DESCRIPTION
03/17/2025	BID SET

PROJ # : 21-DCIU-03 DRAWN BY : Author

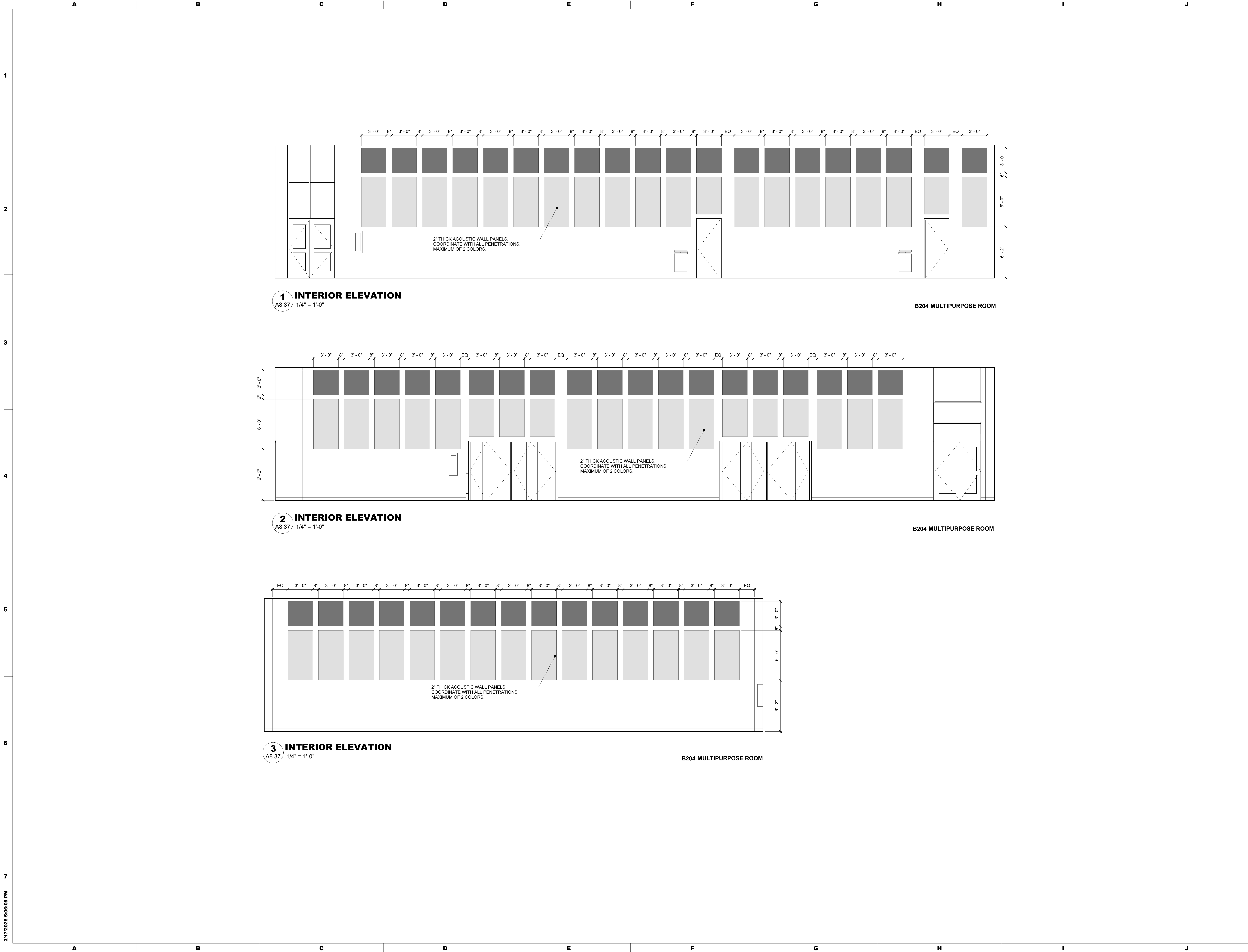
SHEET TITLE:

CORRIDOR INTERIOR ELEVATIONS

SHEET NUMBER:

A8.36

BID SET



3/17/2025 5:06:05 PM

SEAL:

MAROTTA/MAIN
ARCHITECTS

WWW.MAROTTAMAIN.COM

THIS DRAWING IS THE PROPERTY OF THE FIRM.
IT IS NOT TO BE REPRODUCED OR COPIED IN ANY FORM WITHOUT WRITTEN PERMISSION.

CONSULTANT:

DCIU

Empowering Partnerships For Education

ADDITIONS AND RENOVATIONS TO THE
FOLCROFT TECHNICAL SCHOOL
DELAWARE COUNTY
INTERMEDIATE UNIT
701 HENDERSON BLVD.
FOLCROFT, PA 19032

ISSUE DATES

DATE:

DESCRIPTION:

PROJ # : 21-DCIU-03

DRAWN BY : Author

SHEET TITLE:

MULTIPURPOSE ROOM
INTERIOR
ELEVATIONS

SHEET NUMBER:

A8.37

BID SET