



**ADDENDUM | 03**  
**Mary C. Howse Elementary School**  
**641 Boot Road, West Chester, PA 19380**  
**BHA Job No. 22-114**

**DATE OF ISSUANCE:** December 1, 2023

**OWNER:** Damon Gonzaga  
1181 McDermott Drive  
West Chester, PA 19380

**FROM ARCHITECT:** Nate Moran, RA  
Blackney Hayes Architects

The bidder shall complete the attached Addendum Received Form upon receipt of this Addendum and return the form to Blackney Hayes Architects. The form shall be emailed to [nmoran@blackneyhayes.com](mailto:nmoran@blackneyhayes.com).

The following information shall become part of the Contract Documents for the above referenced project.

#### **RESPONSES TO BIDDERS' QUESTIONS**

Q1. With the existing roof deck in the majority of areas being gypsum formboard, please confirm that a thermal barrier is required in the new roofing application as detailed on the drawings.

**A2. Yes, insulation is required. We cannot determine what the existing R-value of the existing roof system is and we are required by code to provide a minimum R value for roofing projects.**

Q2. Typically over gypsum or tectum, we mechanically attach a base sheet and then apply the insulation in adhesive. The base sheet will act as the vapor retarder/barrier and there is no need for a thermal barrier.

**A2. This substitution in installation is not acceptable. Provide the substrate board, vapor barrier, insulation, cover board and membrane as specified in Section 075323, and provide the adhesives and fasteners as outlined in Part 3 of that Spec Section.**

---

#### **CHANGES TO DRAWINGS**

##### **ARCHITECTURAL:**

Drawing A1.02A – ENLARGED ROOF PLAN – AREA 'A'  
Add '(N)' DS' tag for (2) downspouts at Kindergarten roof  
Revise 'RWC' tag to '(N)' DS w/ SPLASHBLOCK' tag

600 Chestnut Street  
Suite 1200  
Philadelphia, PA 19106  
t. 215-829-0922  
f. 215-829-0596  
[www.blackneyhayes.com](http://www.blackneyhayes.com)

John Hayes, FAIA  
Kevin Blackney, AIA, LEED AP  
Jennifer Crawford, AIA  
Michele Barnett, AAHID  
Megan Hayes Barton, NCIDQ  
Troy C. Hill, AIA, ALEP  
Darin Jellison, AIA  
Traci Luckenbill, AIA  
Chris Stigler, AIA, LEED AP

#### **ASSOCIATES**

Carmen Bushong, AIA  
Tyler Cooney, AIA, LEED AP BD+C  
Patrick Gallagher, RA, CSI, CDT  
John Townsend, NCIDQ

Drawing A1.02B – ENLARGED ROOF PLAN – AREA 'B'  
Delete '(N) GUARDRAIL MIN 42" HT' at Gymnasium roof

Drawing A3.11 – BUILDING ELEVATIONS – SOUTH & WEST  
Detail 4 - Revise (2) note '(N) ALUM GUTTER' to '(N) ALUM DOWNSPOUT'

#### **STRUCTURAL:**

Drawing S1.0A – FOUNDATION PLAN – AREA 'A'  
Add concrete ramp from proposed addition; see SSK-1.

Drawing S1.0E – FOUNDATION PLAN – AREA 'E'  
Add concrete ramps from proposed addition; see SSK-1.

Drawing S3.01 – FOUNDATION DETAILS  
Add concrete ramp detail; see SSK-1.

#### **ELECTRICAL:**

Drawing E0.00 – COVER SHEET - ELECTRICAL  
Revise note #3 under Electrical General Notes to the following: "ALL ROOF AND EXTERIOR MOUNTED, GROUND-FAULT RECEPTACLES SHALL HAVE LOCKABLE "IN-USE" WEATHERPROOF COVERS."

Drawing E0.01 Through E0.05 – PHASING PLANS – PHASE 1 Through 5 - ELECTRICAL  
Revise note #6 under General Electrical Phasing Notes as follows: "6. E.C. SHALL MAINTAIN OPERATION OF THE EXISTING FIRE ALARM SYSTEM THROUGH THE DURATION OF THE RENOVATION. PROVIDE INTERCONNECTION BETWEEN NEW AND EXISTING FIRE ALARM SYSTEM SUCH THAT BOTH GO INTO ALARM AT THE SAME TIME."  
Add note #7 under General Electrical Phasing Notes as follows: "7. E.C. SHALL MAINTAIN OPERATION OF THE EXISTING PUBLIC ADDRESS SYSTEM THROUGH THE DURATION OF THE RENOVATION. PROVIDE INTERCONNECTION BETWEEN NEW AND EXISTING PUBLIC ADDRESS SYSTEM SUCH ANNOUNCEMENTS ARE CARRIED THROUGH BOTH SYSTEMS."

Drawing ED1.01C – DEMOLITION FLOOR PLAN – AREA 'C' - ELECTRICAL  
Revise note pointing to BDA equipment to the following: "EX. BDA EQUIPMENT TO REMAIN OPERATIONAL. ENTIRE BDA SYSTEM SHALL REMAIN IN OPERATION. CONTRACTOR SHALL LOCATE, LABEL, PROTECT, REMOVE/REINSTALL ALL EXISTING WIRING AND DEVICES AS REQUIRED TO MAINTAIN OPERATION THROUGHOUT AND AFTER COMPLETION OF PROJECT. CONTRACTOR SHALL REPAIR AND REPLACE ANY WIRING OR DEVICES DAMAGED DURING CONSTRUCTION."

Drawing E2.01A – FLOOR PLAN – AREA 'A' - LIGHTING  
Add (2) exterior ceiling mounted recessed weatherproof PA speakers outside of Vestibule V100.  
Add (1) exterior wall mounted surface weatherproof PA speaker in same location as existing speaker outside of Principal 103.  
Add (1) exterior wall mounted recessed weatherproof PA speaker in same location as existing speaker outside of Kindergarten 111.  
Add (1) exterior wall mounted surface weatherproof PA speaker in same location as existing speaker outside of Resource 112.  
Add (1) corner mounted occupancy sensor in entrance area of Boys 007.  
Add (1) corner mounted occupancy sensor in entrance area of Girls 008.



Add (1) 30 candela ceiling mounted fire alarm speaker/strobe device, (1) ceiling recessed PA speaker, (1) smoke detector, and (1) occupancy sensor in Corridor C100A outside Vestibule V100.

Add (1) ceiling mounted fire alarm speaker/strobe device, (1) ceiling recessed PA speaker, (1) smoke detector, and (1) occupancy sensor in Corridor C100A outside Cafeteria 102 and Gymnasium 100.

Add low voltage light switch to Corridor C100A outside Cafeteria 102 and Gymnasium 100.

Add low voltage light switch to Corridor C100A next to double doors outside Conference 108.

Add wiring between volume control and speaker in Health Suite 107, Principal 103, and Reception 101.

Add type X exit sign with bi-directional arrows in Corridor C100E opposite of courtyard door.



#### Drawing E2.01B – FLOOR PLAN – AREA ‘B’ - LIGHTING

Add exterior recessed mounted weatherproof PA speaker in same location as existing speaker outside Boys 001.

Add exterior recessed mounted weatherproof PA speakers in same locations as existing speakers on North and West corner outside Gymnasium 100.

Add exterior recessed mounted weatherproof PA speakers outside Guidance 304.

Add (2) exterior ceiling mounted recessed weatherproof PA speakers in same location as existing outside of Music 307.

Add exterior surface mounted weatherproof PA speaker in same location as existing outside of Music 307.

Add keyed light switch to Boys 001 and Girls 002.

Revise (3) type X exit signs in Gymnasium 100 to type XWG.

Add smoke detector to Elec. 030.

Add note pointing to light switches in Gymnasium 100 with the following: “MOUNT SWITCHES IN SURFACE MOUNTED LOCKABLE ENCLOSURE. HOFFMAN CAT #CSD16126 OR EQUAL. (TYP. FOR SWITCHES IN GYMNASIUM)”

Add wifi device to Gym Office 100A.

Add surface mounted PA speaker in Boiler Room 028 near exterior exit door.

Remove (2) occupancy sensors and control pack from Boiler Room 028.

Add extra wire from 3 to 4 between light fixtures type L2 in Boiler Room 028.

Add fire alarm pull station to Receiving/Loading 104C.

Add heat detector, ceiling mounted fire alarm speaker/strobe device, and occupancy sensor at point of sale location in Kitchen 104.

Add low voltage light switch to serving line entrance and exit points in Kitchen 104.

Relocate dimming light switch on Stage 102A from wing wall to wall next to door leading to Lift 102B.

Add emergency battery pack fixture type EM to E.E.R 023 and circuit to local room lighting circuit.

Add weatherproof speaker/strobe wall mounted fire alarm device outside Maintenance 026.

Add surface mounted PA speaker in Elec 027.

Add carbon monoxide detector in Maintenance 026.

Add fire alarm pull station and wall mounted fire alarm speaker strobe above pull station near exit door in Maintenance 026.

Add ceiling recessed PA speaker in MDF 025.

Add exit sign to Platform Stair 102C.

Revise lighting in Mechanical Mezzanine 031 to include type L3 over ladder to be on Normal Emergency power. Circuit to MLS-9.

Add emergency lighting relay to Mechanical Mezzanine 031 for type L3 light fixture over ladder.

Revise lighting in Stage 102A to include (2) type L3s to be on Normal Emergency power.

Circuit to MLS-11.

Add emergency lighting relay to Stage 102A for (2) type L3 light fixtures on stage.



Drawing E2.01C – FLOOR PLAN – AREA ‘C’ - LIGHTING

Revise location of ceiling mounted occupancy sensor in Faculty Dining 301 closer to entrance door.

Add ceiling mounted occupancy sensor in Faculty Dining 301 on West side of room.

Revise (4) ceiling mounted speaker/strobe fire alarm devices to audio only devices in Western side North/South Corridor C100B.

Add (1) exterior wall mounted surface weatherproof PA speaker in same location as existing speaker outside of Classroom 312.

Add (1) exterior wall mounted recessed weatherproof PA speaker outside of Reading Lab 203.

Revise (1) ceiling mounted speaker/strobe fire alarm device to audio only device in Corridor C100F.

Revise (1) ceiling mounted speaker/strobe fire alarm device to audio only device in Eastern side North/South Corridor C100B.

Add (1) exterior wall mounted surface weatherproof PA speaker outside of Faculty Dining 301.

Add weatherproof speaker/strobe wall mounted fire alarm device outside Classroom 315 in the interior courtyard.

Add ceiling mounted smoke detector to Kiln 202B.

Drawing E2.01D – FLOOR PLAN – AREA ‘D’ - LIGHTING

Add exterior recessed mounted weatherproof PA speakers in same locations as existing speakers on East and South walls outside Resource 209.

Add exterior recessed mounted weatherproof PA speakers in same locations as existing speakers into exterior courtyard and Southern exit outside Corridor C100D.

Add (1) exterior wall mounted surface weatherproof PA speaker in same location as existing speaker outside of Classroom 320.

Revise (1) ceiling mounted speaker/strobe fire alarm device to audio only device in Corridor C100B.

Revise (3) ceiling mounted speaker/strobe fire alarm devices to audio only devices in Corridor C100D.

Revise location of type H1 exterior wall pack to be closer to exit doors outside of Southern exit Corridor C100D.

Drawing E2.01E – FLOOR PLAN – AREA ‘E’ - LIGHTING

Add exterior recessed mounted weatherproof PA speakers outside Classroom 119, Classroom 118, and Classroom 115.

Drawing E3.01A – FLOOR PLAN – AREA ‘A’ - POWER

Add surface raceway and receptacle at the Eastern end of Corridor C100A. Circuit to PA1C-6.

Add intercom master station in Reception 101.

Revise note pointing to intercom master station in Reception 101 to the following: “PROVIDE AIPHONE CATALOG # IX-MV7-HB-L. (TYP. FOR 2)”

Revise note pointing to fire alarm annunciator in Vestibule V100 to the following: “FIRE ALARM ANNUNCIATOR. PROVIDE REMOTE MICROPHONE.”

Add clock to Mailroom 105 over door exiting to corridor C100A.

Add fire alarm knox box with individual addressable module for monitoring outside single exterior front exit door out Corridor C100A.

Add door contacts to all doors with card readers at Vestibule V100.

Add door contact to door for IDF 010.

Revise CT receptacles in Reception 101 circuit from EQ1A-11 to PA1A-20.

Revise receptacles in Principal 103 and Prnc. Tlt 103A from EQ1A-20 to PA1A-22.

Remove all receptacles from circuit EQ1A-16 except for quadruplex USB receptacle in Principal 103.

Circuit all receptacles removed from circuit EQ1A-16 to PA1A-22 in Principal 103.

Remove all receptacles from circuit EQ1A-23 in Exam 107D.

Revise receptacles in Health Suite 107 from EQ1A-7 to PA1A-24.  
 Remove all receptacles from circuit EQ1A-15 except for quadruplex USB receptacle in Nurse Office. 107B.  
 Circuit CT/GFI receptacle in Exam 107D to EQ1A-15.  
 Remove receptacle in Tlt 107A from circuit EQ1A-28.  
 Circuit receptacles in Nurse Off. 107B and Tlt 107A to PA1A-26.  
 Circuit receptacles in Exam 107D to PA1A-24.  
 Revise note pointing to bracket in Principal 103 to the following: "MOUNT BEHIND T.V. COORDINATE EXACT LOCATION WITH OWNER. PROVIDE 1-1/4" CONDUIT TO TV INPUTS AT PRINCIPALS DESK. REFER TO DETAIL #4 TYPICAL CLASSROOM A/V DIAGRAM ON DWG. E6.02 FOR CABLE AND DEVICE REQUIREMENTS."  
 Revise note pointing at box on the wall in Reception 101 to the following: "NON-AUTOMATIC TRANSFER SWITCH ANNUNCIATOR."



#### Drawing E3.01B – FLOOR PLAN – AREA 'B' - POWER

Add door contacts to North exterior door into Gymnasium 100.  
 Add door contacts to exterior door into Boiler Room 028.  
 Add door contact to exterior door into Elec 027.  
 Add door contacts to exterior door into Vestibule V103.  
 Add door contacts to exterior door into Vestibule V101.  
 Add receptacle to Platform Stair 102C near door into corridor C100B. Circuit to PC1A-10.  
 Add clock to Stage 102A on Western wall.  
 Add plain old telephone service (POTS) outlet to Lift 102B for existing life.  
 Add motor, starter, disconnect switch, and start-stop station for garage door opener in maintenance 026. Circuit to spare 20A/1P breaker #38 in panel PC1B  
 Add note pointing to existing generator that reads as follows: "E.C. SHALL UPGRADE THE EXISTING CUMMINS GENERATOR CONTROLLER TO PCC 3X CONTROLLER VIA UPGRADE KIT A046B465."  
 Add exterior box outside Psych 305 with the following note: "NEW OUTDOOR CONNECTION BOX FOR PORTABLE GENERATOR CONTROL WIRING. COORDINATE FINAL LOCATION IN FIELD WITH OWNER."  
 Add exterior box outside Psych 305 with the following note: "NEW 200A OUTDOOR CONNECTION RECEPTACLE FOR PORTABLE GENERATOR. COORDINATE FINAL LOCATION IN FIELD WITH OWNER."  
 Add (2) exterior weatherproof GFI receptacles outside Psych 305 with the following note: "RECEPTACLE FOR PORTABLE GENERATOR BATTERY CHARGER AND BLOCK HEATER. COORDINATE FINAL LOCATION IN FIELD WITH OWNER." Circuit exterior weatherproof GFI receptacles outside Psych 305 to MEQ-26 and MEQ-28.  
 Add weatherproof GFI receptacle outside Kitchen Storage 104A near existing generator. Circuit to EQ1C-28.

#### Drawing E3.01C – FLOOR PLAN – AREA 'C' - POWER

Add door contact to door into IDF 202A.  
 Add exterior weatherproof GFI receptacle outside of Classroom 206 in interior courtyard. Circuit to PD1B-14.  
 Add exterior weatherproof GFI receptacle outside of Classroom 315 in interior courtyard. Circuit to PC1C-12.  
 Add exterior weatherproof GFI receptacle outside of Girls 016 in interior courtyard. Circuit to PD1A-15.  
 Revise note pointing to cord reel to the following: "... REFER TO DETAIL #12 TYPICAL CORD REEL MOUNTING DETAIL ON DWG. E6.02. ..."  
 Add exterior weatherproof GFI receptacle outside of Classroom 201 in interior courtyard. Circuit to PA1B-25.  
 Clarify the device under the 3.1 grid bubble in Reading Lab 203 is a CT quadruplex receptacle.



Drawing E3.01D – FLOOR PLAN – AREA 'D' - POWER

Add door contacts to door into IDF 012.

Add door contacts to Southern exterior door into Corridor C100D.

Add 16" diameter clock to Library 211 South Eastern corner.

Revise note pointing to cord reel to the following: "... REFER TO DETAIL #12 TYPICAL CORD REEL MOUNTING DETAIL ON DWG. E6.02. (TYP. FOR ALL IN DESIGN LAB)"

Drawing E3.01E – FLOOR PLAN – AREA 'E' - POWER

Add door contacts to Southern exterior door into Corridor C100F.

Drawing E3.02 – OVERALL ROOF PLAN – POWER

Revise circuit for RTU-1 to PA1A-49.51.53.

Revise circuit to EF-1 to PA1A-30.

Drawing E4.03B – CAFETERIA – SOUND SYSTEM DETAILS

Delete reference to "pool speakers" and replace with "cafeteria speakers" in wiring diagram #1.

Drawing E4.04B – GYMNASIUM – SOUND SYSTEM

Delete reference to "pool speakers" and replace with "gymnasium speakers" in wiring diagram #1.

Drawing E5.01 – ENLARGED PLANS - POWER

Add note pointing to (2) boxes next to panel EQ1C in Boiler Room 028 that reads the following: "VFD'S BY M.C."

Revise note pointing to fire alarm control panel in E.E.R 023 to the following: "FIRE ALARM CONTROL PANEL. PROVIDE CEULLAR DIALER ABOVE."

Add clocks to above door leading into adjacent corridor in E.E.R. 023 and MDF 025.

Revise electrical connection type for Food Service Electrical Schedule for Item No's 001B, 001C, 002, 008, 009, 010, 011, 012, 016, and 022 to NEMA 5-20P.

Add box inside E.E.R. 023 room with the following note: "E.C. SHALL PROVIDE CUMMINS POWERCOMMAND LOAD CONTROL MODULE TO SHED ATS #2 DURING GENERATOR OVERLOADING."

Revise name for MTS #1 and MTS #2 in E.E.R. 023 to NATS #1 and NATS #2.

Drawing E6.01 – DETAILS AND DIAGRAMS - ELECTRICAL

Revise detail #4 GROUND SYSTEM RISER DIAGRAM as per reissued sheet.

Revise detail #1 EXISTING SINGLE LINE DIAGRAM – DEMOLITION as per reissued sheet.

Revise detail #2 SINGLE LINE DIAGRAM – NEW WORK as per reissued sheet.

Drawing E6.02 – DETAILS AND DIAGRAMS - ELECTRICAL

Revise detail #9 ACCESS CONTROL DIAGRAM per attached sketch SKE-01.

Revise detail #3 FIBER RISER DIAGRAM note to the following: "TYPICAL 12-STRAND MULTI-MODE FIBER RUN IN PLENUM-RATED ORANGE INNERDUCT BETWEEN MDF AND EACH IDF"

Drawing E7.01 – SCHEDULES - ELECTRICAL

Add type EM emergency battery pack by Evenlite catalog number: TEBL6W-SD. Approved equal manufacturer: ISOLITE - BUG

Add type XWG exit sign with polycarbonate shield by Evenlite catalog number: LUC75-R-1-NOTE 1-U-LS. Approved manufacturers: ECOGLO – EX STANDARD; EXITRONIX – PXP

Add approved manufacturers to fixture types F4 and F8 as follows: ARON – UNO SUSPENDED;

Remove 40A/3P breaker circuit numbers 26,28,30 from panel MEQ for RTU-1.

Remove 35A/1P breaker circuit #25 from panel MEQ for ACC-1 Evaporator.

Add (2) spare 20A/1P breakers in panel MEQ. Circuit number 25 and 30.  
 Add (2) 20A/1P breakers for portable generator receptacles in panel MEQ. Circuit number 26 and 28.  
 Moved circuit #22 in panel EQ1A to circuit #7.  
 Revised circuits #11, 13, 20, 22, and 23 to become spare 20A/1P breakers in panel EQ1A.  
 Utilize spare 20A/1P breaker circuit #28 in panel EQ1C for receptacle at generator.  
 Revise notes at bottom of panels MLS, LS1A, and LS1B to the following: "Provide Bussman Quik-Spec Fusible Panel, Full Rated Copper Buses, and Equipment Ground Bars."  
 Revise mains rating on panel MLS to 200A.  
 Revise note at bottom of panels MEQ and EQ1A to the following: "\*\*\*Provide Equipment GFCI Breaker."  
 Revise circuit #24 in panel MEQ to have (2) asterisks at the end calling for equipment GFCI breaker.  
 Revise circuit #3 in panel EQ1A to have (2) asterisks at the end calling for equipment GFCI breaker.  
 Revise note at bottom of panel EQ1C to the following: "\*\*Provide Class A GFCI Breaker."



#### Drawing E7.02 – SCHEDULES - ELECTRICAL

Revise breaker size to 150A/3P for circuit 7,9,11 in panel DP1A.  
 Revise 20A/1P spare breakers in panel PA1A for circuits #20, 33, 24, 26, and 30 to include receptacles in 101, 103/103A, 107/107D, 107A/107B, and Roof.  
 Add 40A/3P breaker to panel PA1A for RTU-1 – Roof.  
 Revise circuit 25 in panel PA1B to include exterior receptacle in interior courtyard.  
 Revise circuit 6 in panel PA1C to include receptacle in corridor C100A.  
 Revise spare 20A/1P breaker in panel PB1A to 35A/1P breaker for Evaporator – ACC-1.  
 Revise circuit 10 in panel PC1A to include receptacle in Platform Stair 102C.  
 Add circuit 38 in panel PC1B for garage door opener in Maintenance 026.  
 Add spare 20A/1P breaker to circuit #40 in panel PC1B.

#### Drawing E7.03 – SCHEDULES - ELECTRICAL

Revise circuit #12 in panel PC1C to include exterior receptacle in interior courtyard.  
 Flip circuits #2,4,6 and #8,10,12 with each other in panel PD1D.  
 Revise circuit #15 in panel PD1A to include exterior receptacle in interior courtyard.  
 Revise circuit #14 in panel PD1B to include exterior receptacle in interior courtyard.  
 Revise note at bottom of panel K1 to the following: "\*\*Provide Class A GFCI Breaker."

#### Drawing SE1.01 – SITE PLAN - LIGHTING

Revise note for detail #2 SITE LIGHT BASE DETAIL to the following: "SONOTUBE POURED CONCRETE (4500 PSI MINIMUM) BASE BY E.C. (18" FOR POLES UP TO 25'-0" HIGH 24" FOR POLES OVER 25'-0" HIGH) INCREASE AS REQUIRED TO SUIT BOLT CIRCLE."  
 Remove note "WIRE THRU LIGHTING CONTROL PANEL." on lighting circuits PC1B-20,22 and PC1B-21,23.



**ATTACHMENTS:**

1. SSK-1 – AREA 'E' FOUNDATION PLAN
2. SKE-01 – REVISED ACCESS DIAGRAM
3. E6.01 – DETAILS AND DIAGRAMS – ELECTRICAL

**END OF ADDENDUM 03**

**ISSUED BY THE ARCHITECT:**

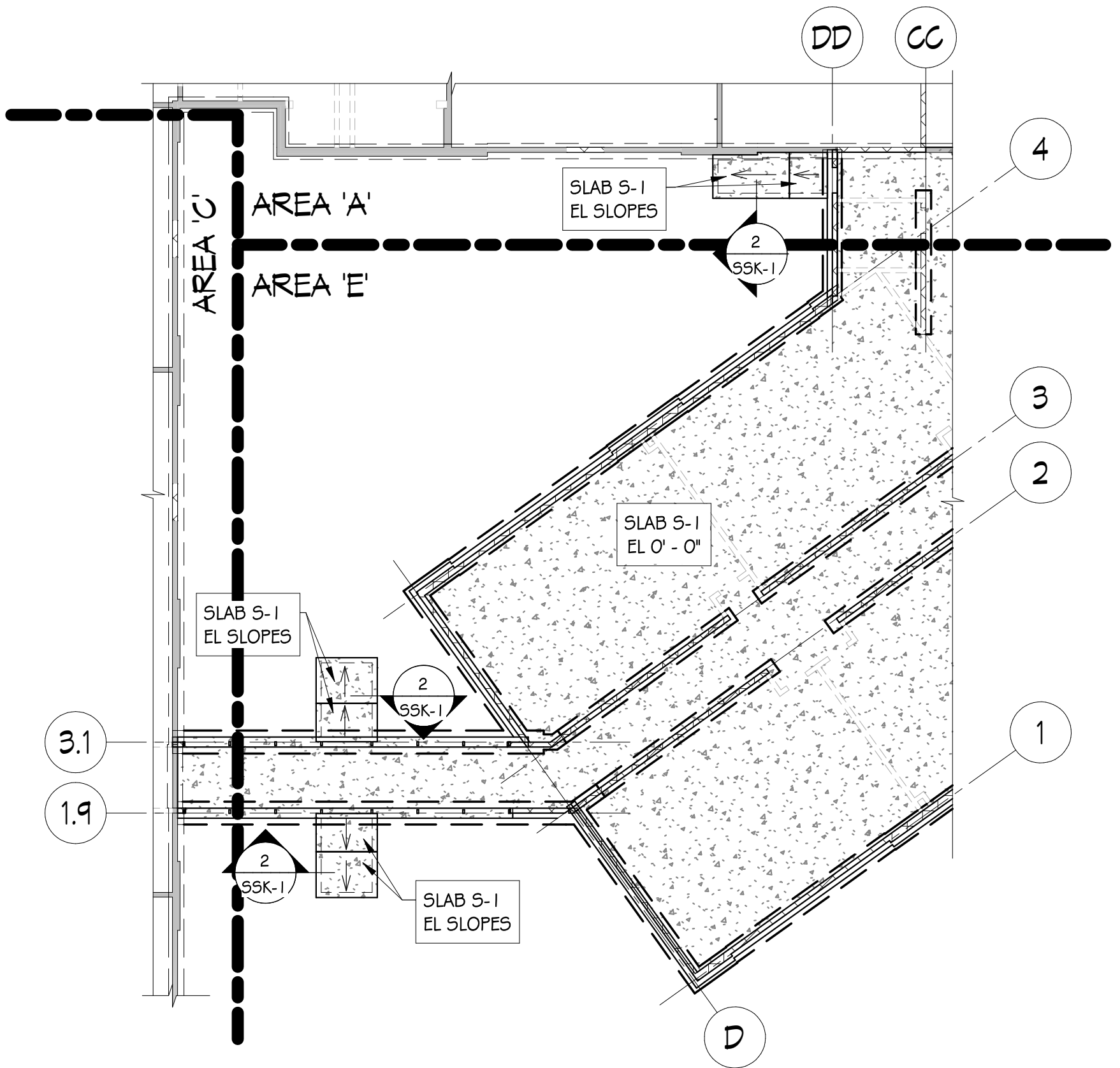
\_\_\_\_\_  
(Signature)

Nate Moran, RA – Project Architect

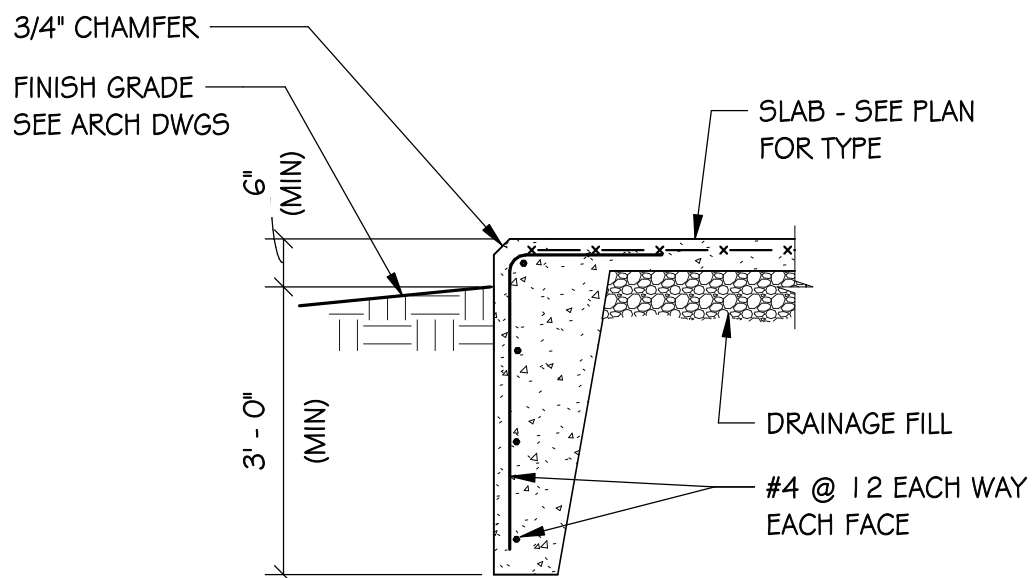
\_\_\_\_\_  
(Printed name and title)





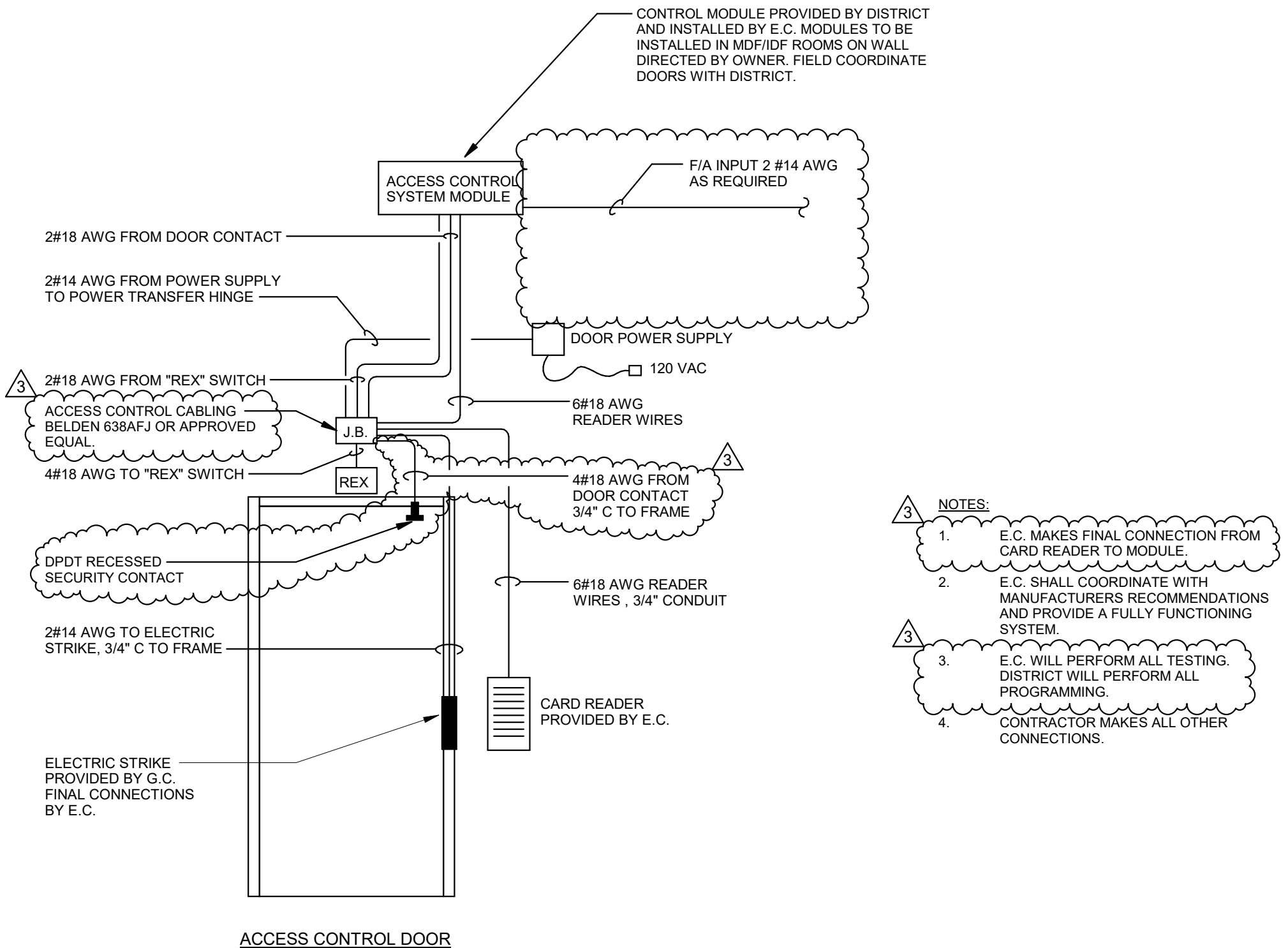


1 FOUNDATION PLAN - AREA 'E' - RAMPS  
SSK-1 SCALE: 1/16" = 1'-0"



2 TYPICAL SLAB TURNDOWN  
SSK-1 SCALE: 1/2" = 1'-0"

Brian D. McGlade, PE  
Pennsylvania PE #35277



1 ACCESS CONTROL DIAGRAM  
NO SCALE



Mary C. Howse  
Elementary

150 S. Independence Mall West  
Suite 1200  
Philadelphia, PA 19106  
phone: 215.829.0922  
facsimile: 215.829.0596

BHA Job Number:	22-114
Scale:	NO SCALE
Drawn By:	DJG
Sheet(s) Affected:	
Date:	12/01/2023
Revision:	

Sheet Name:  
REVISED ACCESS  
DIAGRAM  
Sheet No:  
**SKE-01**  
© Copyright 2022 Blackney Hayes Architects



phone: 215.829.0922 x###  
CONTACT PERSON: PM Name

**OWNER**  
West Chester Area School District  
phone: 484.266.1281  
CONTACT PERSON: Damon Gonzaga

**CIVIL ENGINEER**  
Stantec Consulting Services  
phone: 610.840.2500  
CONTACT PERSON: Charles J. Olivo, PE

**STRUCTURAL ENGINEER**  
Baker, Ingram & Associates  
phone: 856.310.1491  
CONTACT PERSON: Brian D. McGlade, PE

**MEP & FP**  
Snyder Hoffman Associates, Inc  
phone: 610.684.8020  
CONTACT PERSON: Jeff Machik, PE

Project:  
**Mary C. Howse  
Elementary**

Project Address:  
**641 Boot Road  
West Chester, PA 19380**

Sheet Title:  
**DETAILS AND  
DIAGRAMS -  
ELECTRICAL**

Seal

**DUTY TO INSPECT CONTRACT DOCUMENTS PRIOR TO STARTING WORK:**  
Any party who relies in part or whole on the content of these Construction Documents shall, before beginning any work, be responsible for fully inspecting the complete set of Contract Documents, including all Drawings, Specifications, and Addenda, for completeness, conflicts, scope of work, and suitability for constructing the building. All parties relying on these documents represent that they have expertise in the area of their responsibility and are knowledgeable regarding industry standards, product requirements and code requirements and therefore are qualified to fully evaluate and interpret the contract documents. All parties relying on these documents must, prior to beginning work, submit all requests for clarifications and additional information to the Architect in writing. All parties who begin work hereby certify that the documents are suitable for their intended purposes unless noted in specific written exception beforehand.

Warning: Actual conditions may vary from conditions shown on this drawing. Confirm all information in the field before proceeding with any work and notify the Architect in writing if a variation is discovered.

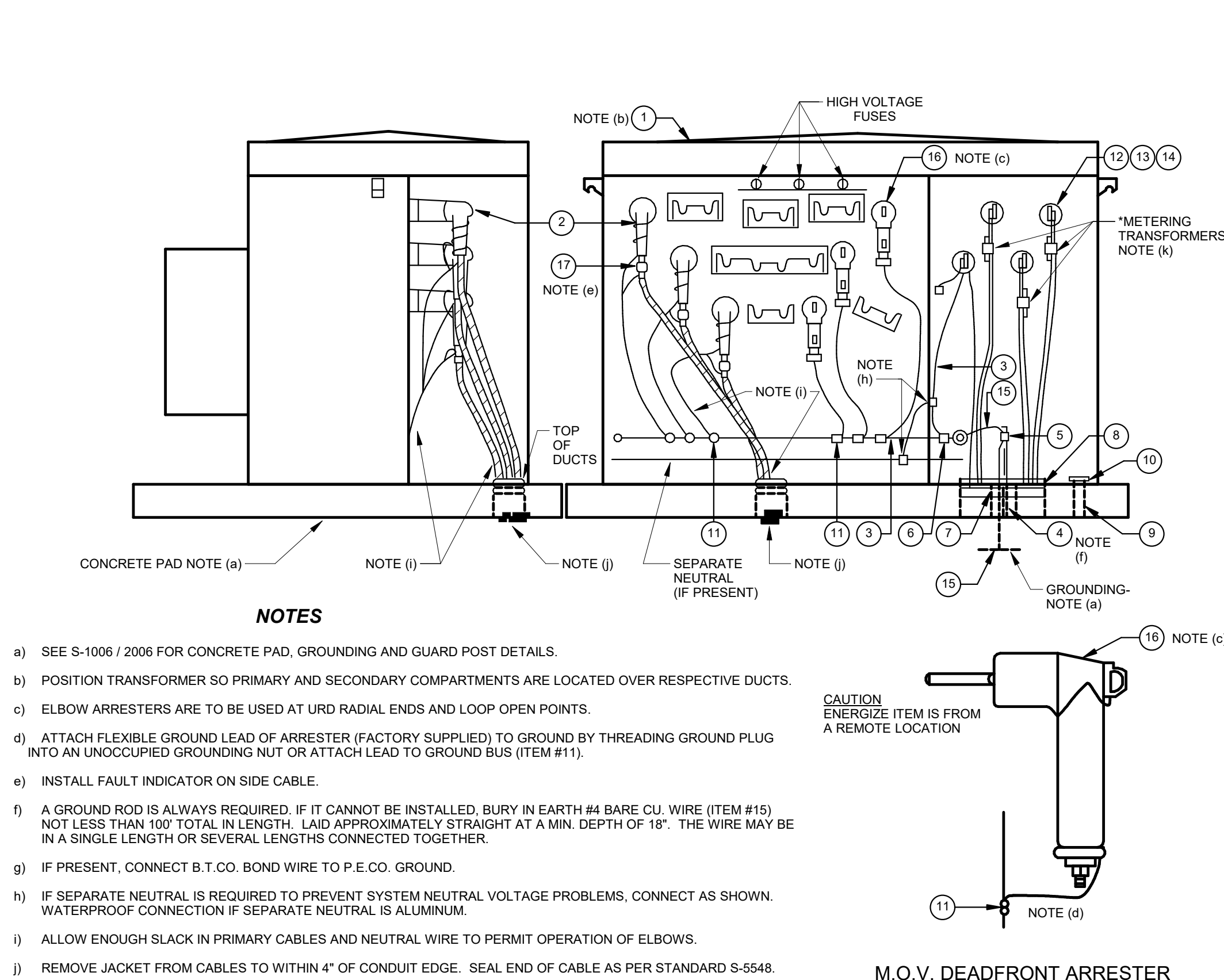
This drawing is not to be copied or transmitted in any form without the express written authorization of Blackney Hayes Architects. All ideas and concepts depicted or suggested in this drawing are the property of Blackney Hayes Architects.

Date	Comments	Δ
07.28.2023	80% CD SET	
09.19.2023	90% CD SET	
10.31.2023	BID SET	
11.09.2023	ISSUED FOR PERMIT	
12.01.2023	ADDENDUM 03	3

BHA Job Number: 22-114  
Scale: As indicated  
Drawn By: DJG  
Checked By: DAN  
Approved By: RLM  
Sheet No.

**E6.01**

© Copyright 2022 Blackney Hayes Architects

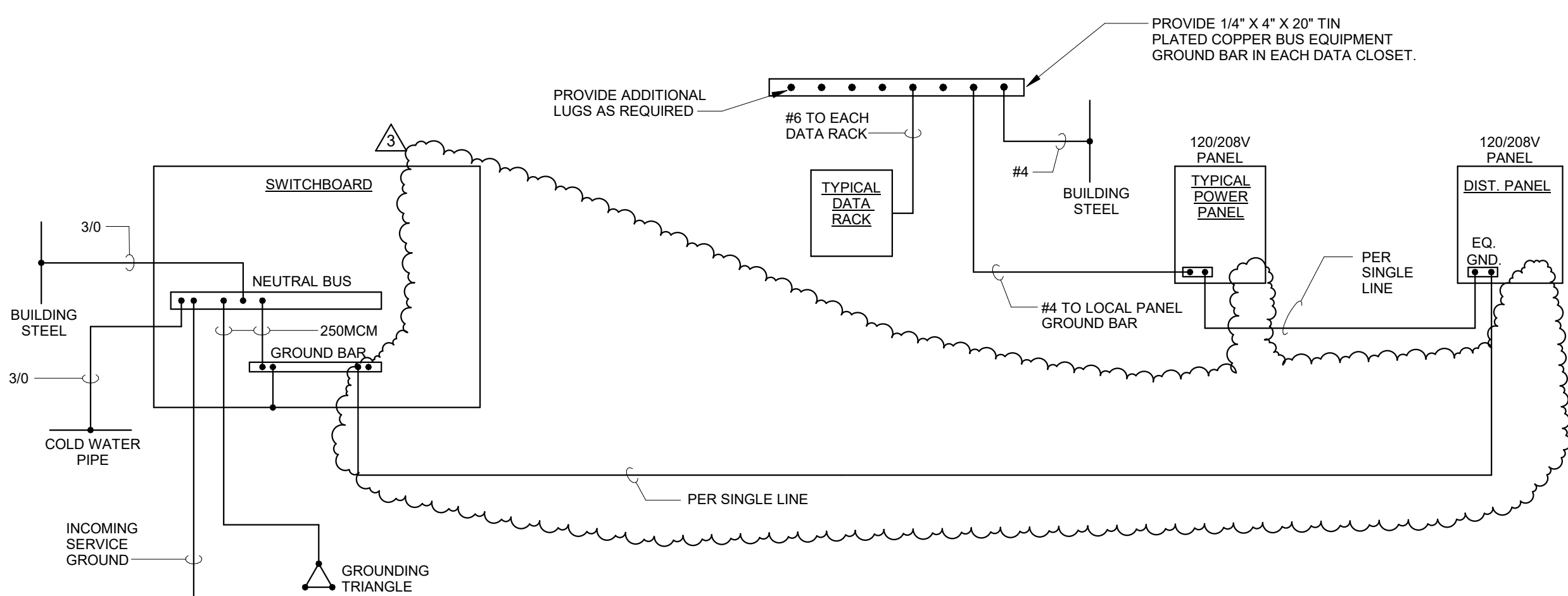


ITEM	CODE NO.	DESCRIPTION	QUANTITY
1	133-	TRANSFORMER, PADMOUNT, 3-PHASE	1
2	138-36269	ELBOW, 36KV, (PURPLE CUFF) MLD, RBBR, LB, 1/0 AL	3
3	135-76852	WIRE, #2 SOL. CU. BARE, S.D.	*
4	138-52501	ROD, GROUND, CU, 5/8" x 10'	1
5	138-12500	CLAMP, GROUND ROD, HEX HD.	1
6	*	CONNECTOR, TAP, VISETYPE, CU	*
7	139-49925	PACKING, OAKUM	*
8	199-12686	COMPOUND, SEALING, DUCT	*
9	*	CONDUIT, METERING, 1-1/2" MIN. I.D.	*
10	*	BUSHING, INSULATED	*
11	132-14608	CONNECTOR, TAP, VISE TYPE, CU, 2/0 SOL.	6
12	132-05403	BOLT, MACHINE, 1/2" x 2", GALV.	*
13	132-76017	WASHER, ROUND, FLAT, 1/2" GALV.	*
14	132-76008	WASHER, LOCK, SPLIT, 1/2" GALV.	*
15	135-76855	WIRE, #4 SOL. CU. BARE, S.D.	*
16	138-00888	ARRESTER / ELBOW, 27 KV	3
17	139-36002	INDICATOR, FAULT, .590 TO 1.25" CBL	3

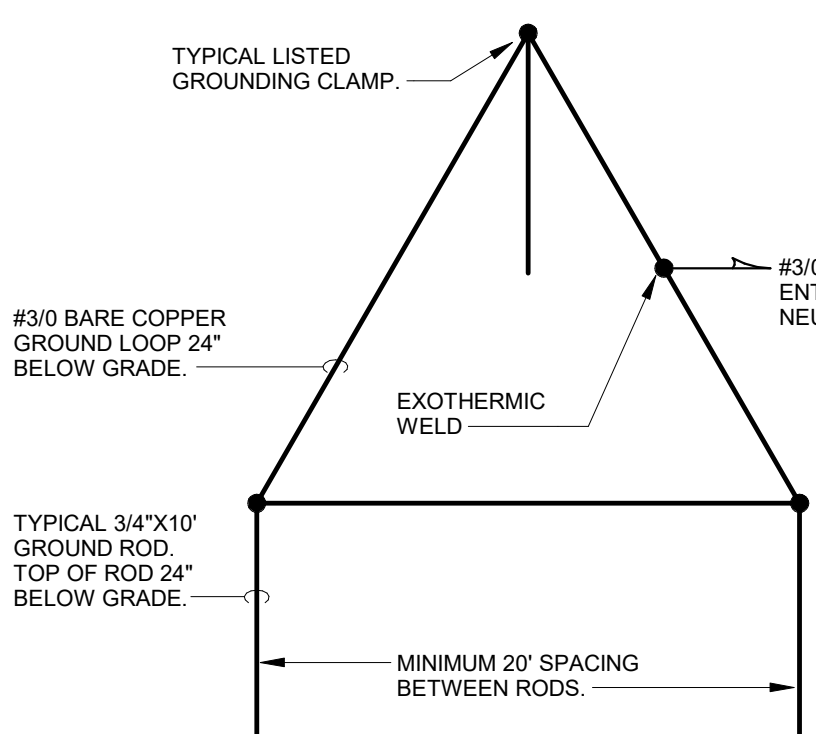
\*AS REQUIRED

#### REFERENCES

#### 5 PECO 3-PHASE TRANSFORMER CONNECTIONS NO SCALE



#### 4 GROUND SYSTEM RISER DIAGRAM NO SCALE



#### 3 GROUNDING TRIANGLE DIAGRAM NO SCALE

#### NOTE:

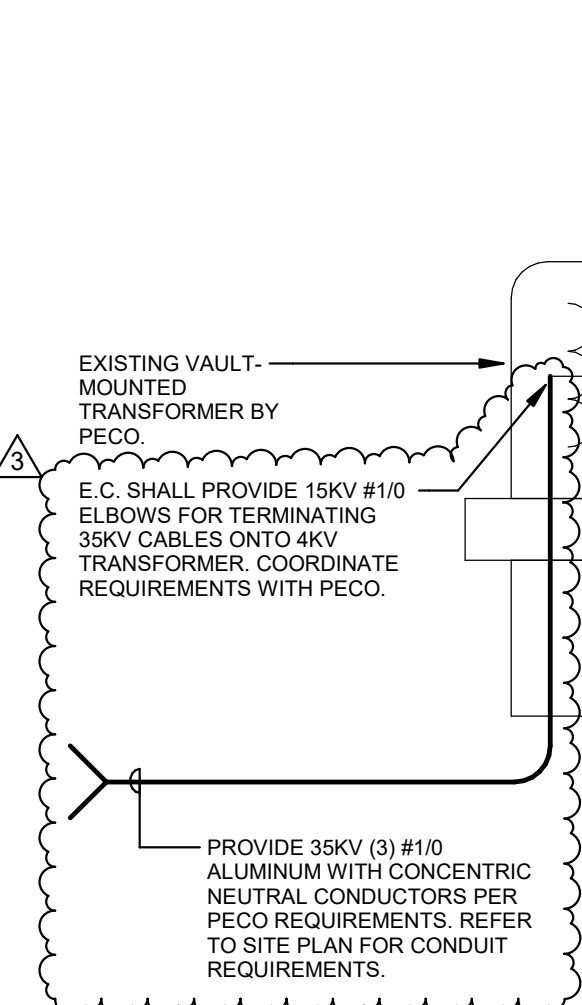
EC SHALL PROVIDE SPLICE BOXES WHERE REQUIRED TO REDUCE FEEDER SIZES FOR TERMINATION ON BREAKERS OR LUGS. E.C. SHALL PROVIDE COPPER CONDUCTORS NO SMALLER THAN AS ALLOWED PER NEC TABLE 310-16 USING THE 75 DEGREE RATING.

LIGHTER LINEWEIGHTS REPRESENT EXISTING GEAR TO REMAIN.

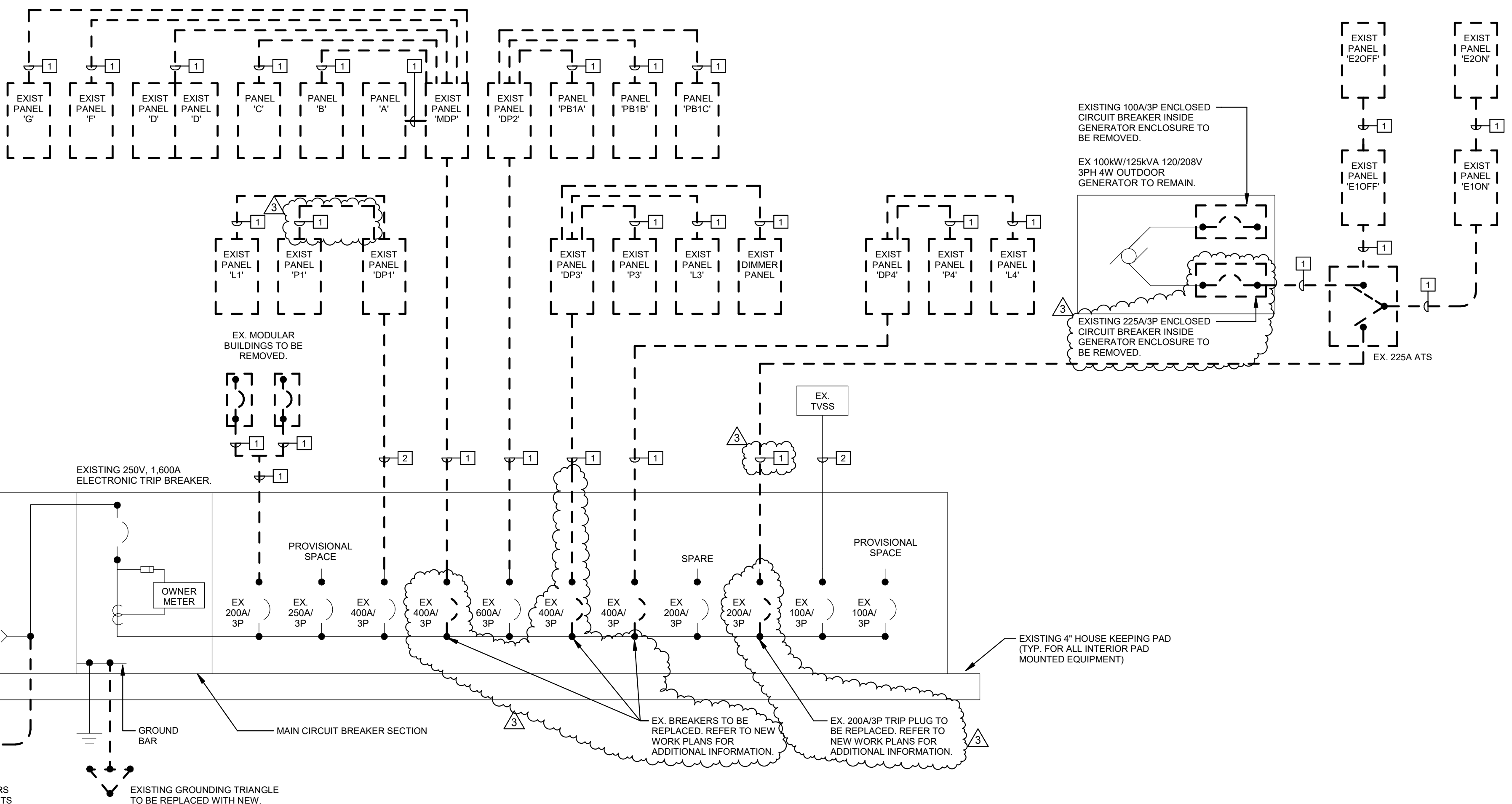
#### FEEDER SCHEDULE:

1	EXISTING FEEDER TO REMAIN.
2	1200A (3) SETS OF: (4) 600MCM, (1) #3/0 GROUND IN 4" CONDUIT.
3	600A (3) SETS OF: (4) 500MCM, (1) #4/0 GROUND IN 4" CONDUIT.
4	600A (2) SETS OF: (4) 350MCM, (1) #1 GROUND IN 3-1/2" CONDUIT.
5	400A (2) SETS OF: (4) 250MCM, (1) #1 GROUND IN 3" CONDUIT.
6	300A (2) SETS OF: (4) 250MCM, (1) #1 GROUND IN 3" CONDUIT.
7	250A (4) 250MCM, (1) #4 GROUND IN 3" CONDUIT.
8	200A 2 HR FIRE RATED (4) 250MCM, (1) #4 GROUND IN 3-1/2" EMT CONDUIT, DURALIFE RHH CABLE OR EQUAL.
9	200A (4) #3/0, (1) #6 GROUND IN 2-1/2" CONDUIT.
10	175A (4) 250MCM, #3 GROUND IN 3" CONDUIT.
11	175A (4) #4/0, (1) #4 GROUND IN 2-1/2" CONDUIT.
12	175A (4) #2/0, (1) #6 GROUND IN 2" CONDUIT.
13	150A (4) #4/0, #3 GROUND IN 2-1/2" CONDUIT.
14	150A (4) #1/0, (1) #6 GROUND IN 2" CONDUIT.
15	125A (4) #1/0, (1) #4 GROUND IN 2" CONDUIT.
16	100A (4) #4/0, (1) #4 GROUND IN 2-1/2" CONDUIT.
17	100A (4) #1/0, #6 GROUND IN 2" CONDUIT.
18	100A (4) #1, (1) #6 GROUND IN 2" CONDUIT.
19	75A (4) #1, (1) #4 GROUND IN 2" CONDUIT.
20	60A (4) #4, (1) #1/0 GROUND IN 1-1/4" CONDUIT.
21	300A (4) 350MCM, (1) #4 GROUND IN 3-1/2" CONDUIT.
22	200A 2 HR FIRE RATED (4) #3/0, (1) #6 GROUND IN 3" EMT CONDUIT, DURALIFE RHH CABLE OR EQUAL.
23	100A 2 HR FIRE RATED (4) #1/0, (1) #6 GROUND IN 2-1/2" EMT CONDUIT, DURALIFE RHH CABLE OR EQUAL.

#### M.O.V. DEADFRONT ARRESTER



#### 2 SINGLE LINE DIAGRAM - NEW WORK NO SCALE



#### 1 EXISTING SINGLE LINE DIAGRAM - DEMOLITION NO SCALE

**ADDENDUM RECEIVED**

Date: \_\_\_\_\_

To: Blackney Hayes Architects

Attention: \_\_\_\_\_

Project: Mary C. Howse Elementary School

Addendum Number \_\_\_\_\_

**This correspondence acknowledges that we have received the above referenced Addendum.**

**Accepted by:**

Name: \_\_\_\_\_

Title: \_\_\_\_\_

Date: \_\_\_\_\_

Signature: \_\_\_\_\_

