



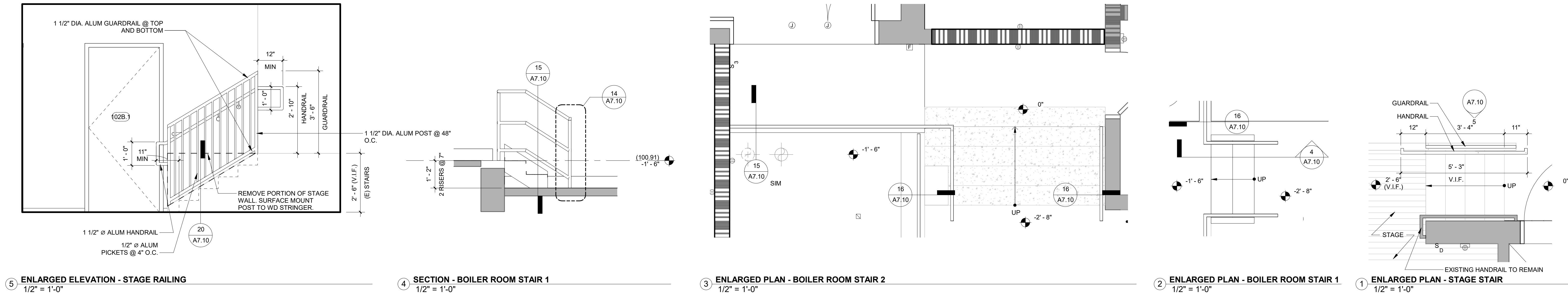
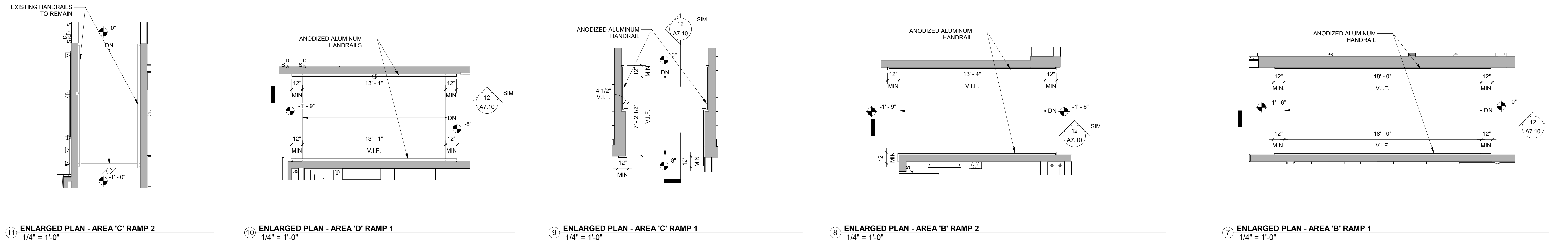
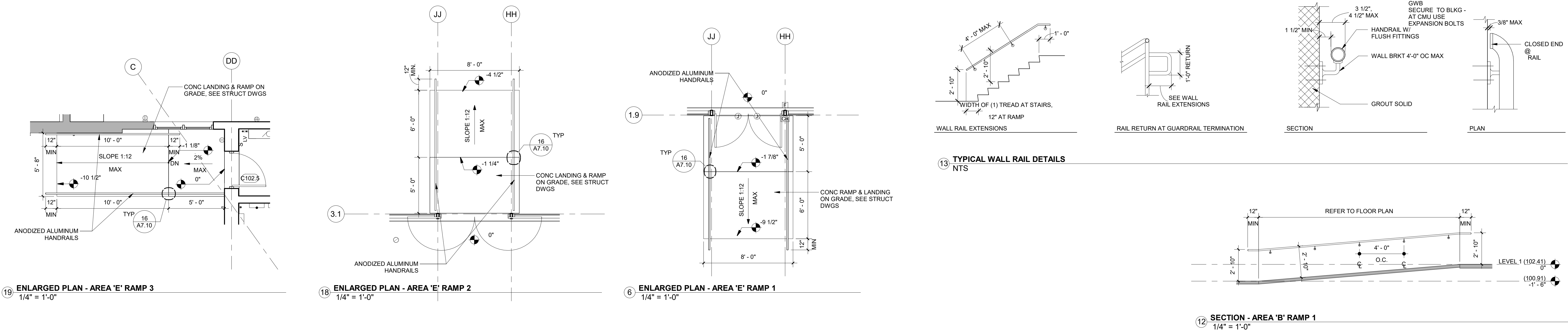
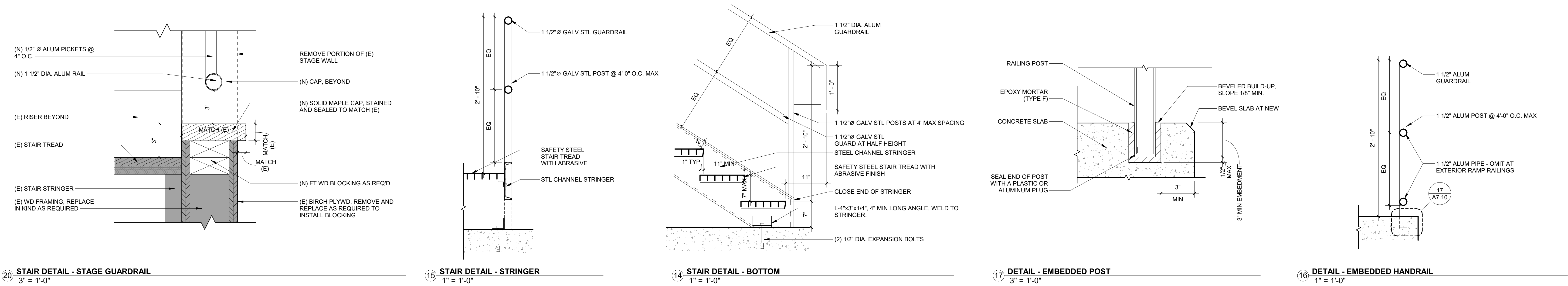
phone: 215.829.0922 x###
CONTACT PERSON: PM Name

OWNER
West Chester Area School District
phone: 484.266.1281
CONTACT PERSON: Damon Gonzaga

CIVIL ENGINEER
Stantec Consulting Services
phone: 610.840.2500
CONTACT PERSON: Charles J. Olivo, PE

STRUCTURAL ENGINEER
Baker, Ingram & Associates
phone: 856.310.1491
CONTACT PERSON: Brian D. McGlade, PE

MEP & FP
Snyder Hoffman Associates, Inc
phone: 610.694.8020
CONTACT PERSON: Jeff Machik, PE



Project:
Mary C. Howse Elementary

Project Address:
**641 Boot Road
West Chester, PA 19380**

Sheet Title:
**STAIR PLANS,
SECTIONS, & DETAILS**

Seal

DUTY TO INSPECT CONTRACT DOCUMENTS PRIOR TO STARTING WORK:
Any party who relies in part or whole on the content of these Construction Documents shall, before beginning any work, be responsible for fully inspecting the complete set of Contract Documents, including all Drawings, Specifications, and Addenda, for completeness, conflicts, scope of work, and suitability for constructing the building. All parties relying on these documents represent that they have expertise in the area of their responsibility and are knowledgeable regarding industry standards, product requirements and code requirements and therefore are qualified to fully evaluate and interpret the contract documents. All parties relying on these documents must, prior to beginning work, submit all requests for clarifications and additional information to the Architect in writing. All parties who begin work hereby certify that the documents are suitable for their intended purposes unless noted in specific written exception beforehand.

Warning: Actual conditions may vary from conditions shown on this drawing. Confirm all information in the field before proceeding with any work and notify the Architect in writing if a variation is discovered.

This drawing is not to be copied or transmitted in any form without the express written authorization of Blackney Hayes Architects. All ideas and concepts depicted or suggested in this drawing are the property of Blackney Hayes Architects.

Release	Date	Comments	
	03.24.2023	SCHEMATIC DESIGN	△
	05.28.2023	DESIGN DEVELOPMENT	
	07.28.2023	60% CD SET	
	09.19.2023	90% CD SET	
	10.31.2023	BID SET	

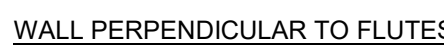
BHA Job Number: 22-114
Scale: As indicated
Drawn By: BH
Checked By: NM
Approved By: DJ
Sheet No.

A7.10

© Copyright 2022 Blackney Hayes Architects

Seal

Sheet No.



10 $1\frac{1}{2}" = 1'-0"$



8 PARTITION TYPE 1Z - MTL
3" = 1'-0"



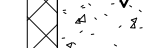
⑦ **CONTRC**
3" = 1'-0"



6 **PARTITION -**
1 1/2" = 1'-0"



9 PARTITION TYPE 3J - INTERIOR CMU WALL
1 1/2" = 1'-0"



5 PARTITION -
1 1/2" = 1'-0"



4 PARTITION TYPE 3C, 3F
3" = 1'-0"



3 PARTITION
3" = 1'-0"



② **PARTITION**
3" = 1'-0"



① **PARTITION**
3" = 1'-0"



phone: 215.829.0922 x###
CONTACT PERSON: PM Name

OWNER
West Chester Area School District
phone: 484.266.1281
CONTACT PERSON: Damon Gonzaga

CIVIL ENGINEER
Stantec Consulting Services
phone: 610.840.2500
CONTACT PERSON: Charles J. Olivo, PE

STRUCTURAL ENGINEER
Baker, Ingram & Associates
phone: 856.310.1491
CONTACT PERSON: Brian D. McGlade, PE

MEP & FP
Snyder Hoffman Associates, Inc
phone: 610.694.8020
CONTACT PERSON: Jeff Machik, PE

Project:
Mary C. Howse Elementary

Project Address:
**641 Boot Road
West Chester, PA 19380**

Sheet Title:
CEILING DETAILS

Seal

DUTY TO INSPECT CONTRACT DOCUMENTS PRIOR TO STARTING WORK
Any party who relies in part or whole on the content of these Construction Documents shall, before beginning any work, be responsible for fully inspecting the complete set of Contract Documents, including all Drawings, Specifications, and Addenda, for completeness, conflicts, scope of work, and suitability for constructing the building. All parties relying on these documents represent that they have expertise in the area of their responsibility and are knowledgeable regarding industry standards, product requirements and code requirements and therefore are qualified to fully evaluate and interpret the contract documents. All parties relying on these documents must, prior to beginning work, submit all requests for clarifications and additional information to the Architect in writing. All parties who begin work hereby certify that the documents are suitable for their intended purposes unless noted in specific written exception beforehand.

Warning: Actual conditions may vary from conditions shown on this drawing. Confirm all information in the field before proceeding with any work and notify the Architect in writing if a variation is discovered.

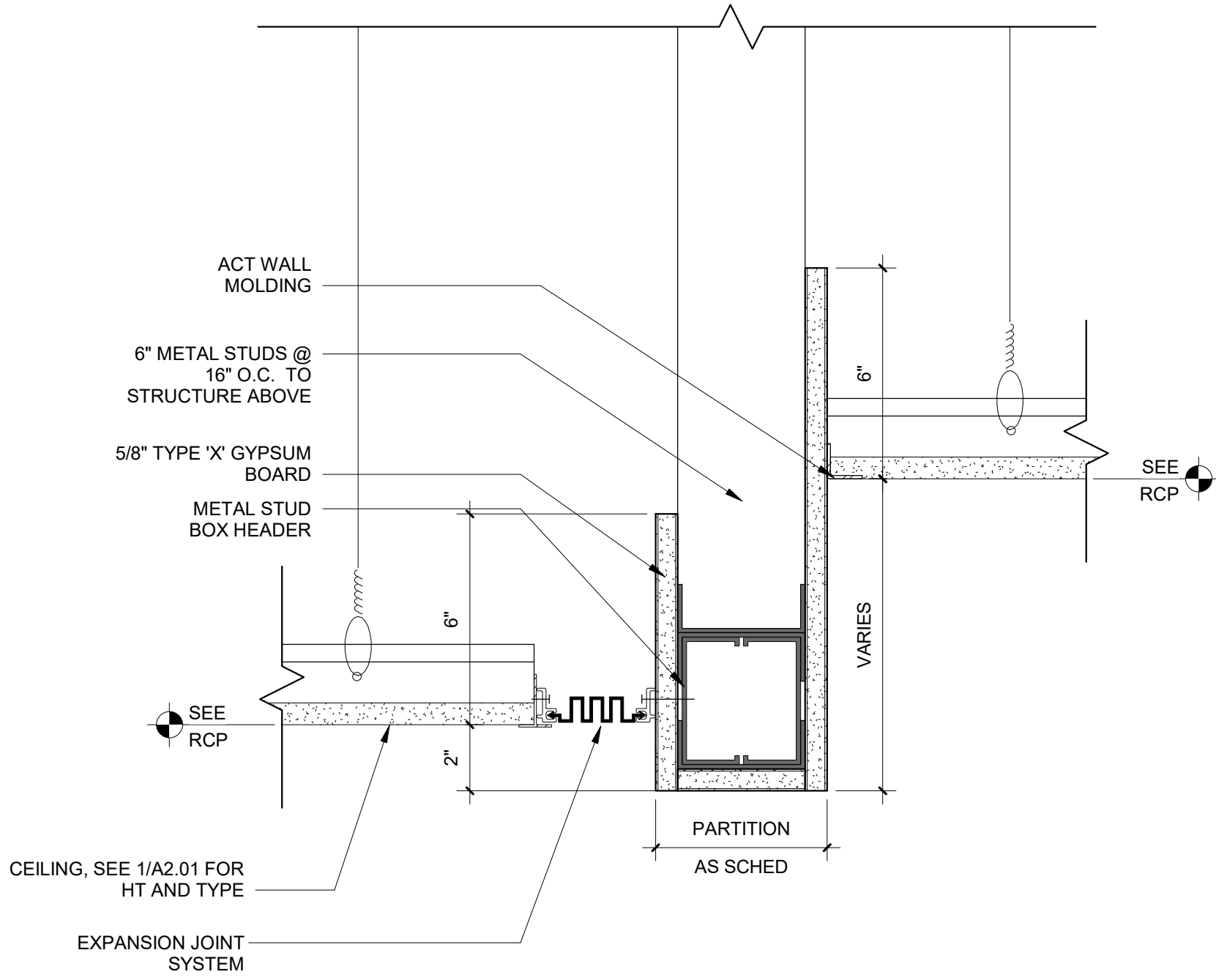
This drawing is not to be copied or transmitted in any form without the express written authorization of Blackney Hayes Architects. All ideas and concepts depicted or suggested in this drawing are the property of Blackney Hayes Architects.

Release	Date	Comments	
	03.24.2023	SCHEMATIC DESIGN	△
	05.28.2023	DESIGN DEVELOPMENT	
	07.28.2023	60% CD SET	
	09.19.2023	90% CD SET	
	10.31.2023	BID SET	

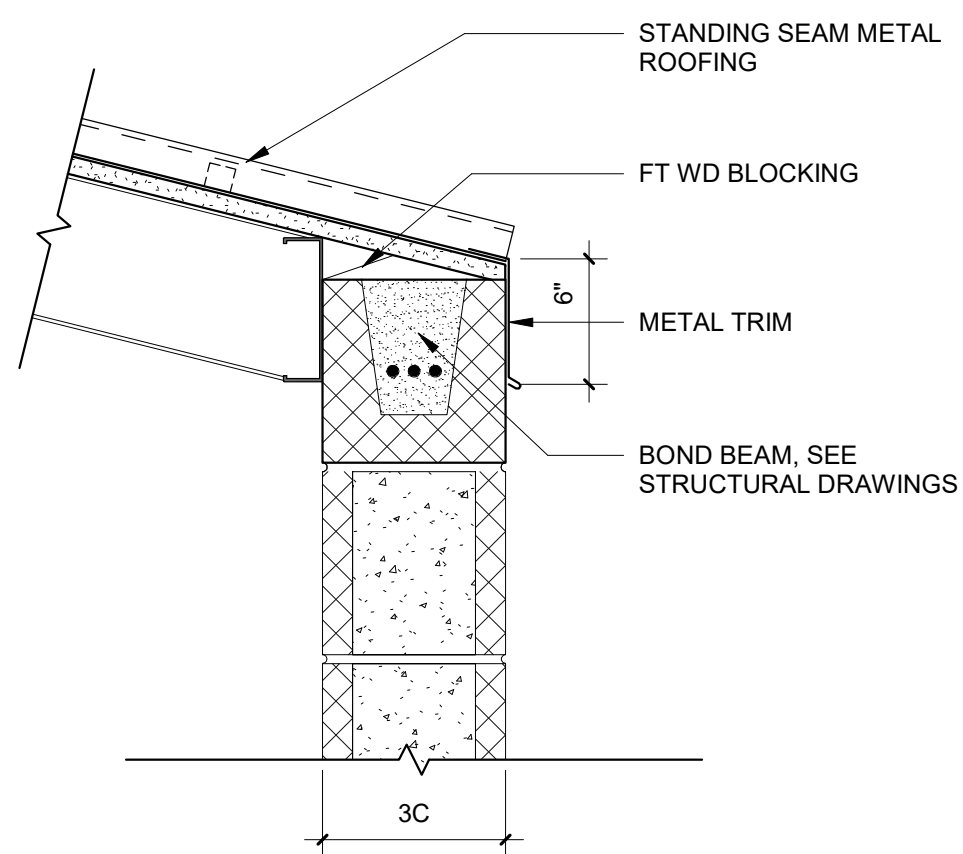
BHA Job Number: 22-114
Scale: As indicated
Drawn By: BH
Checked By: NM
Approved By: DJ
Sheet No.

A8.20

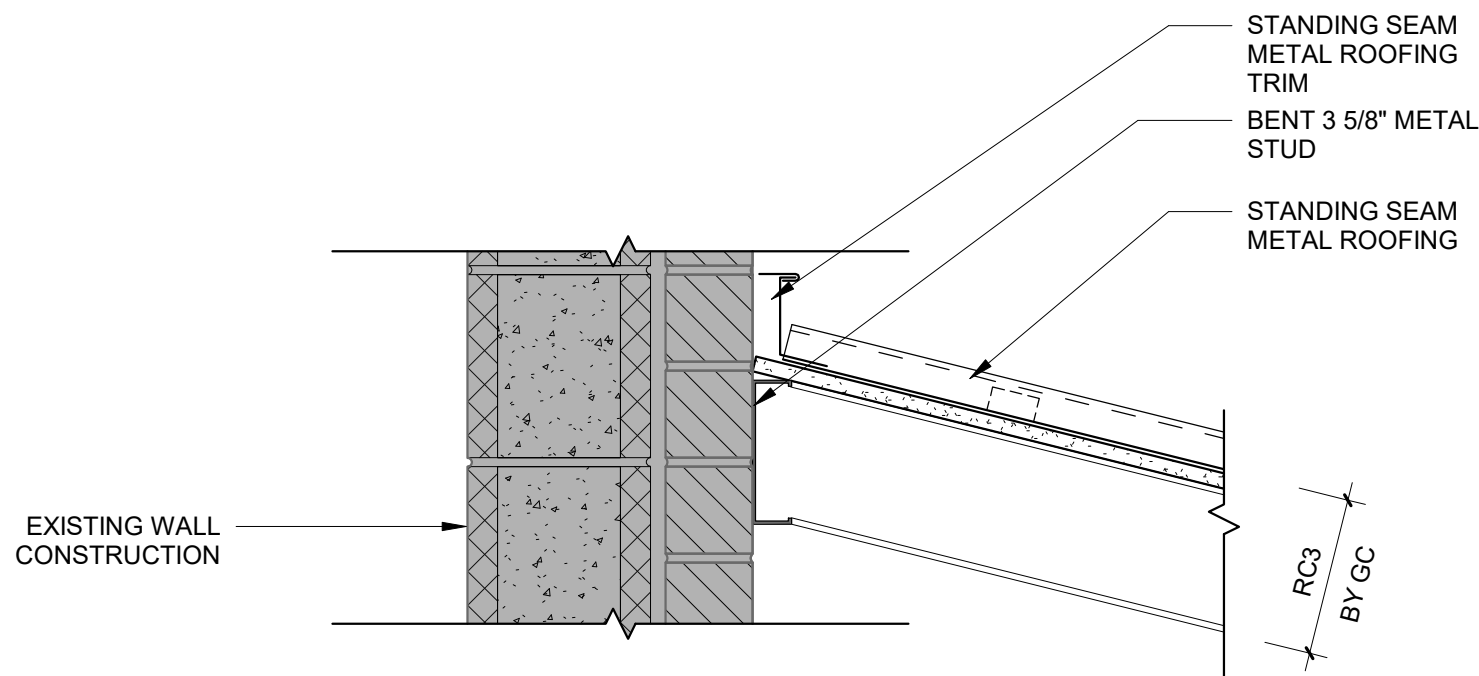
© Copyright 2023 Blackney Hayes Architects



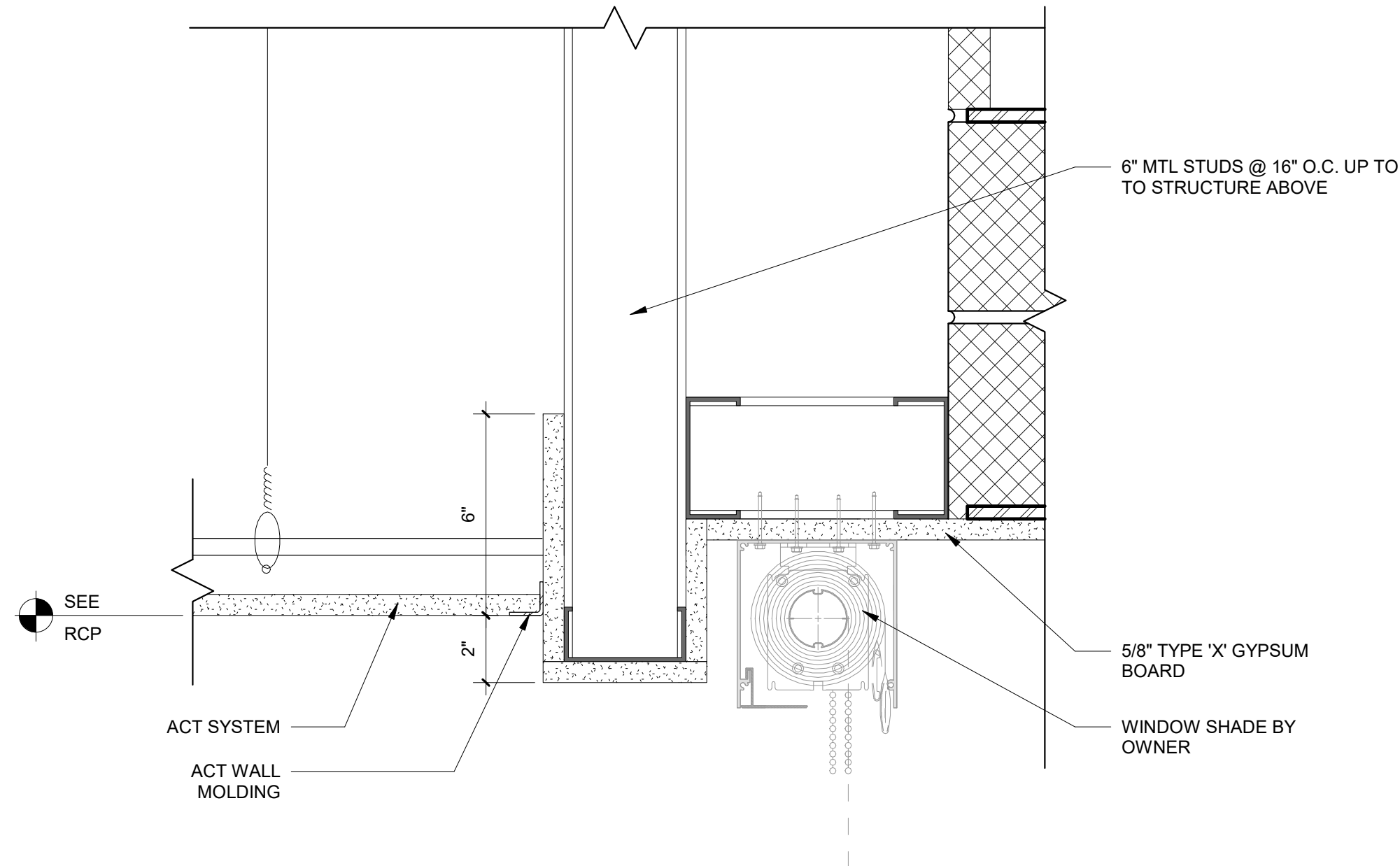
12 CEILING TRANSITION - GWB HEADER / EXPANSION JOINT
3" = 1'-0"



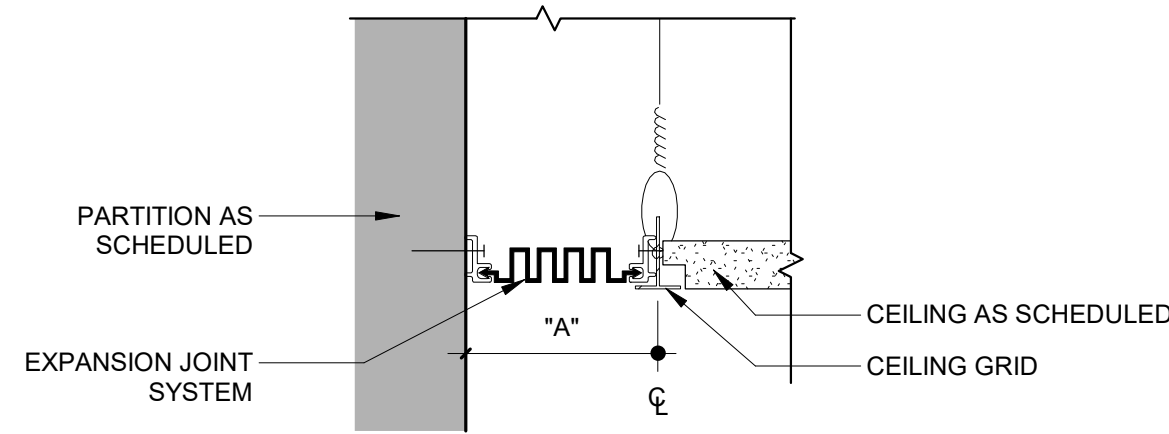
11 EAVE DETAIL @ RC-3
1 1/2" = 1'-0"



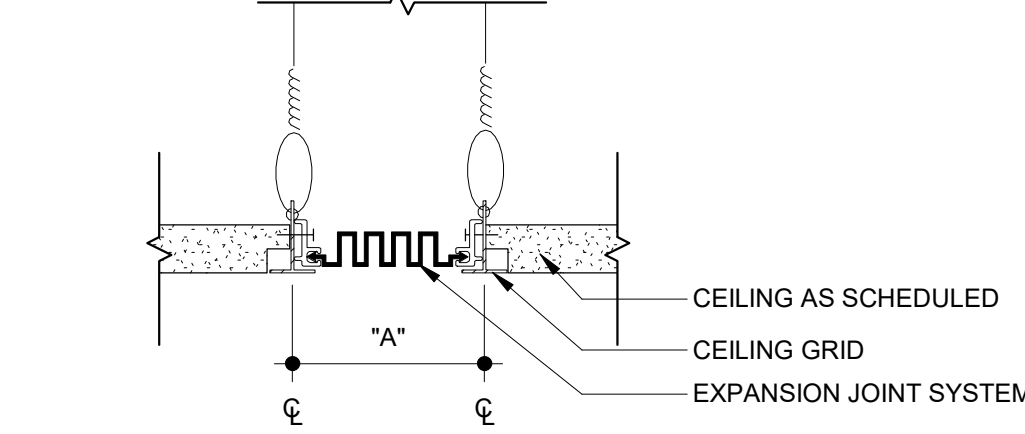
10 RIDGE DETAIL @ RC-3
1 1/2" = 1'-0"



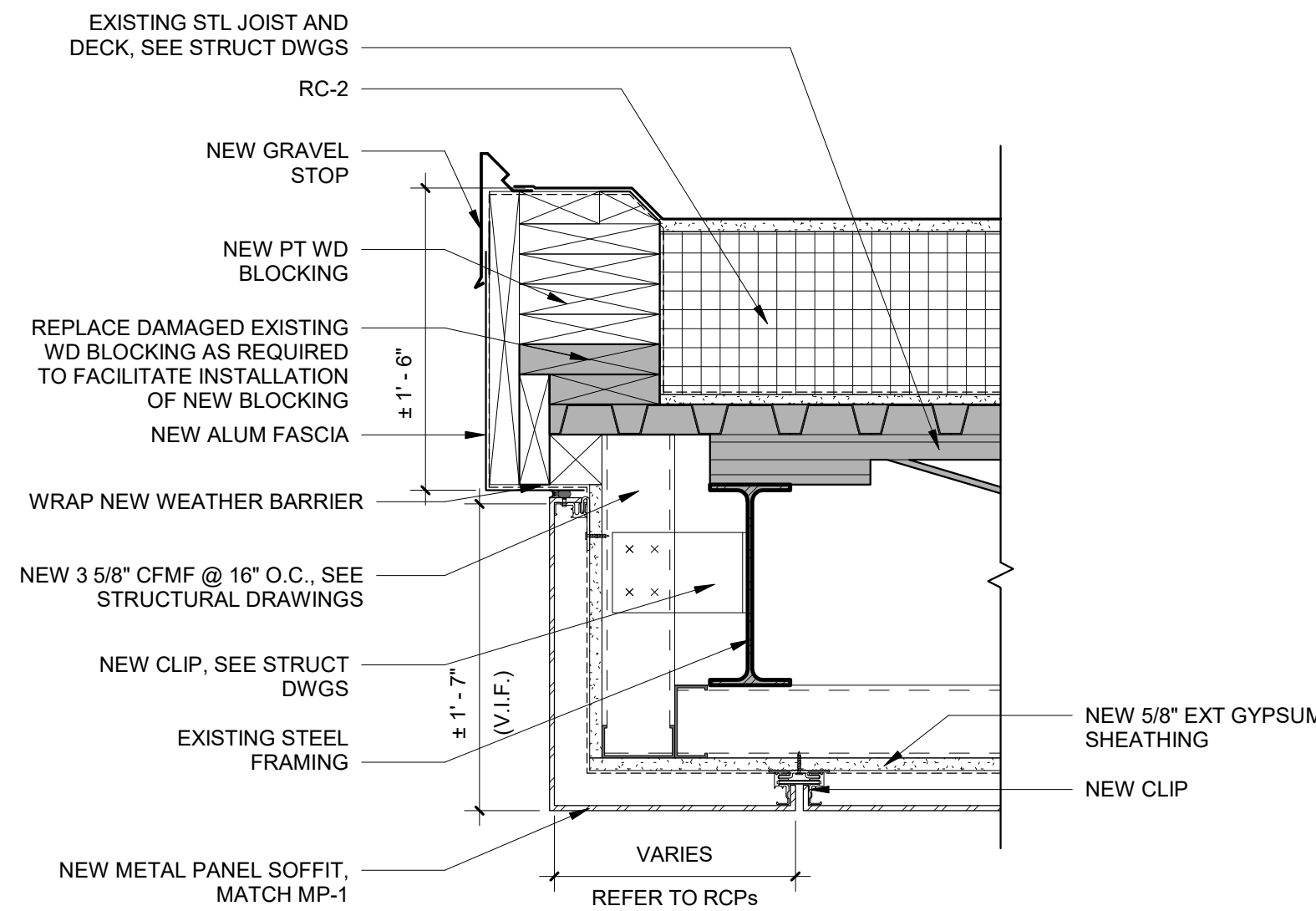
9 CEILING DETAIL - WINDOW BULKHEAD
3" = 1'-0"



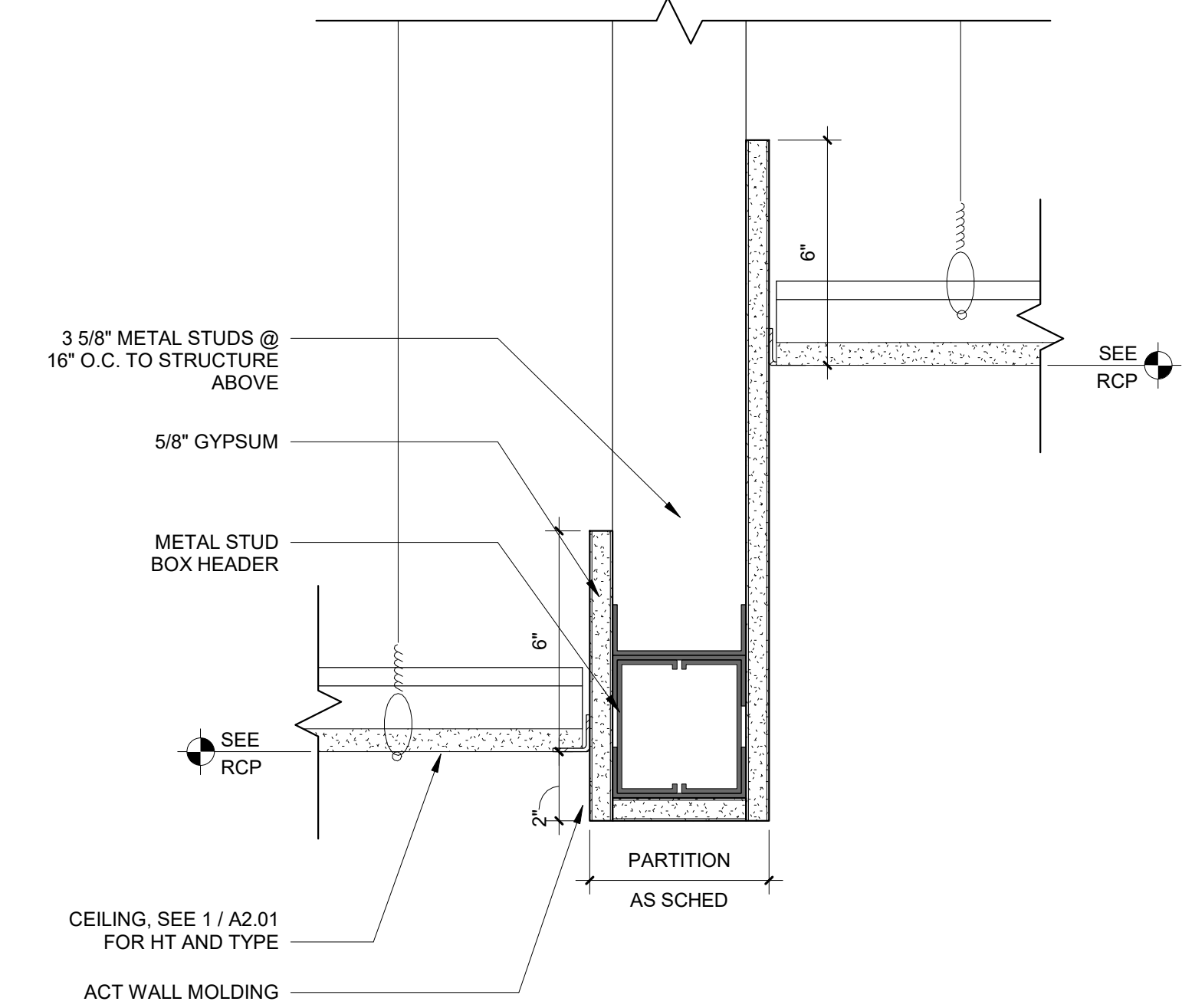
7 EXPANSION JOINT AT PARTITION TO CEILING
3" = 1'-0"



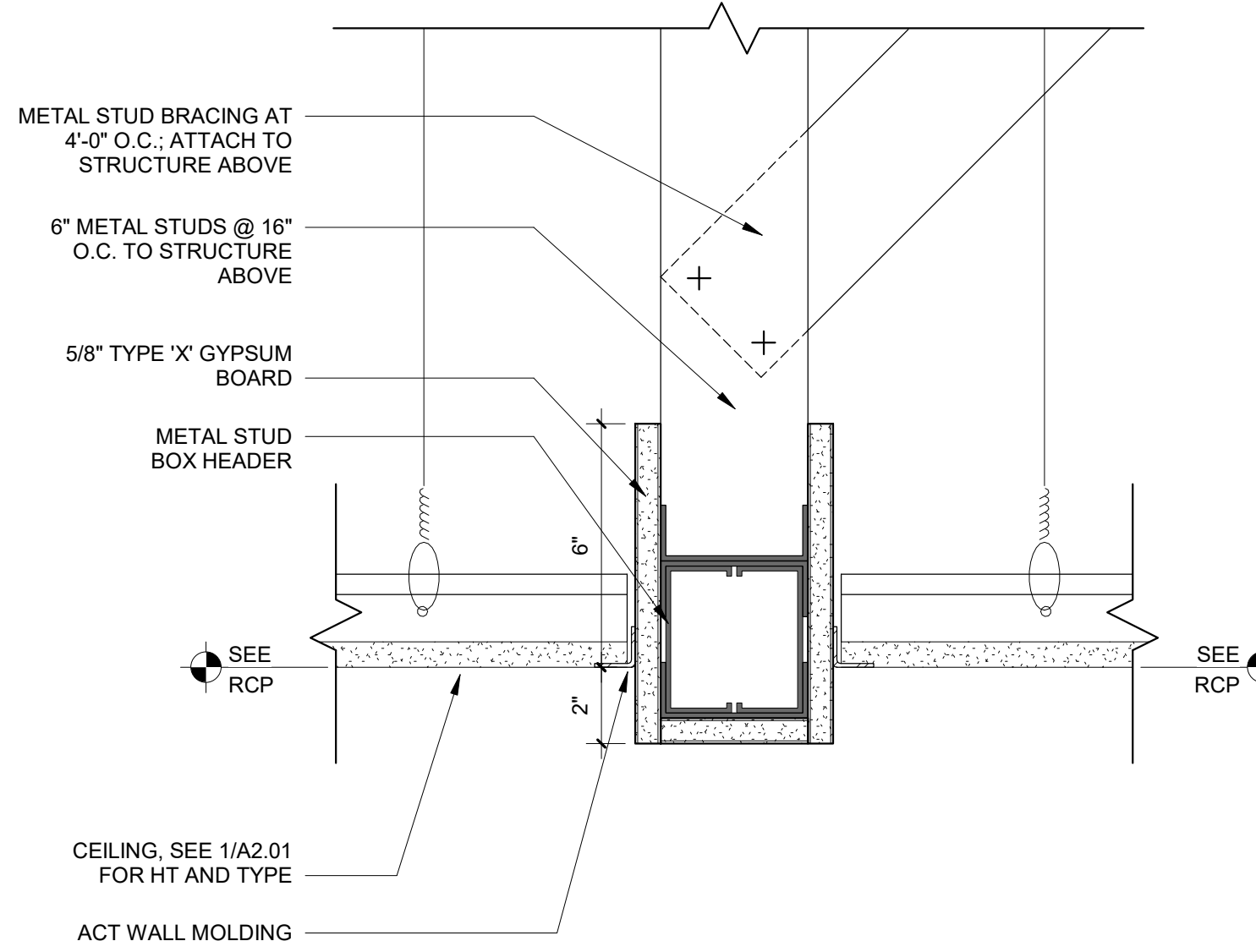
8 EXPANSION JOINT AT CEILING TO CEILING
3" = 1'-0"



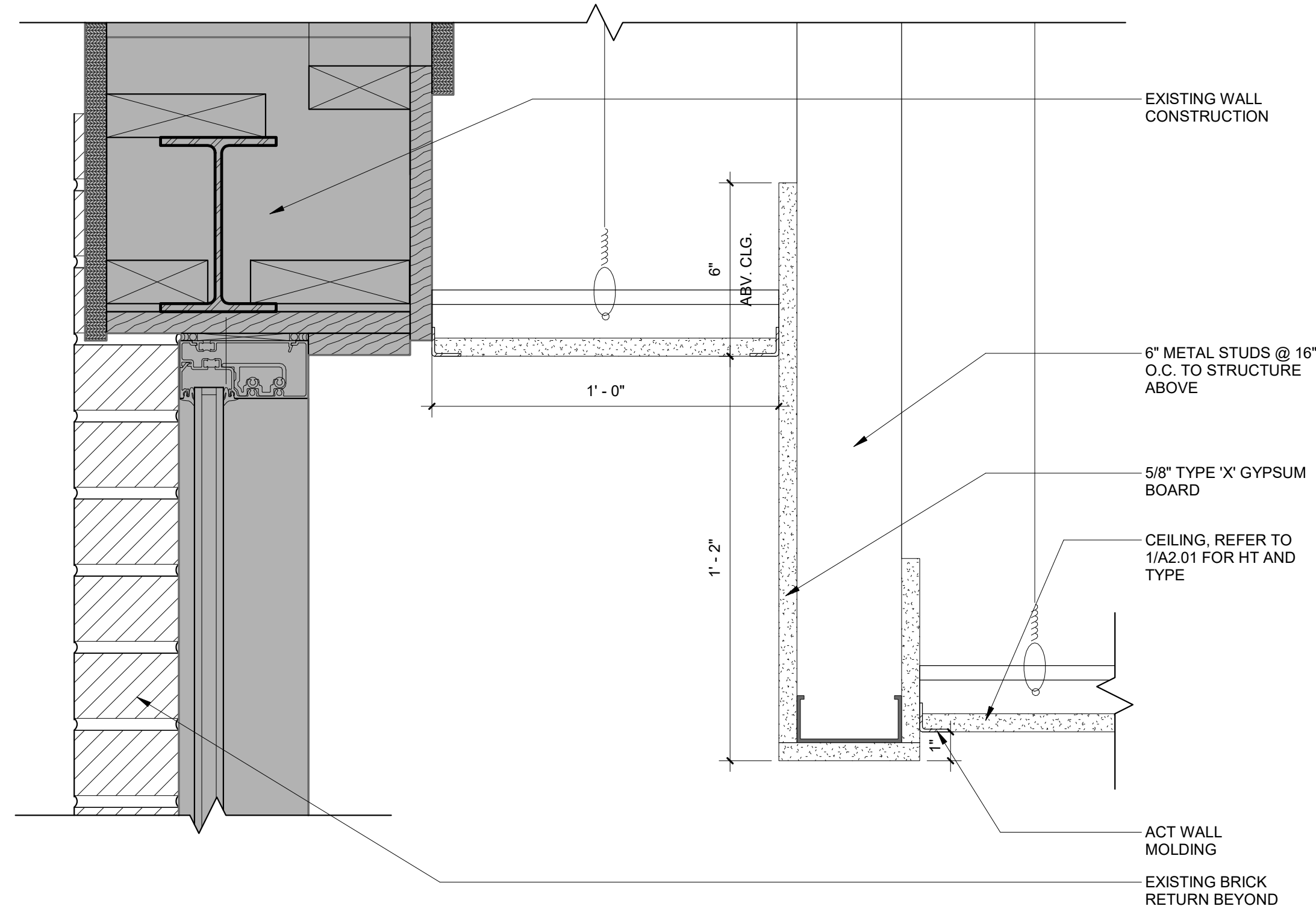
6 CEILING DETAIL @ EXTERIOR SOFFIT
1 1/2" = 1'-0"



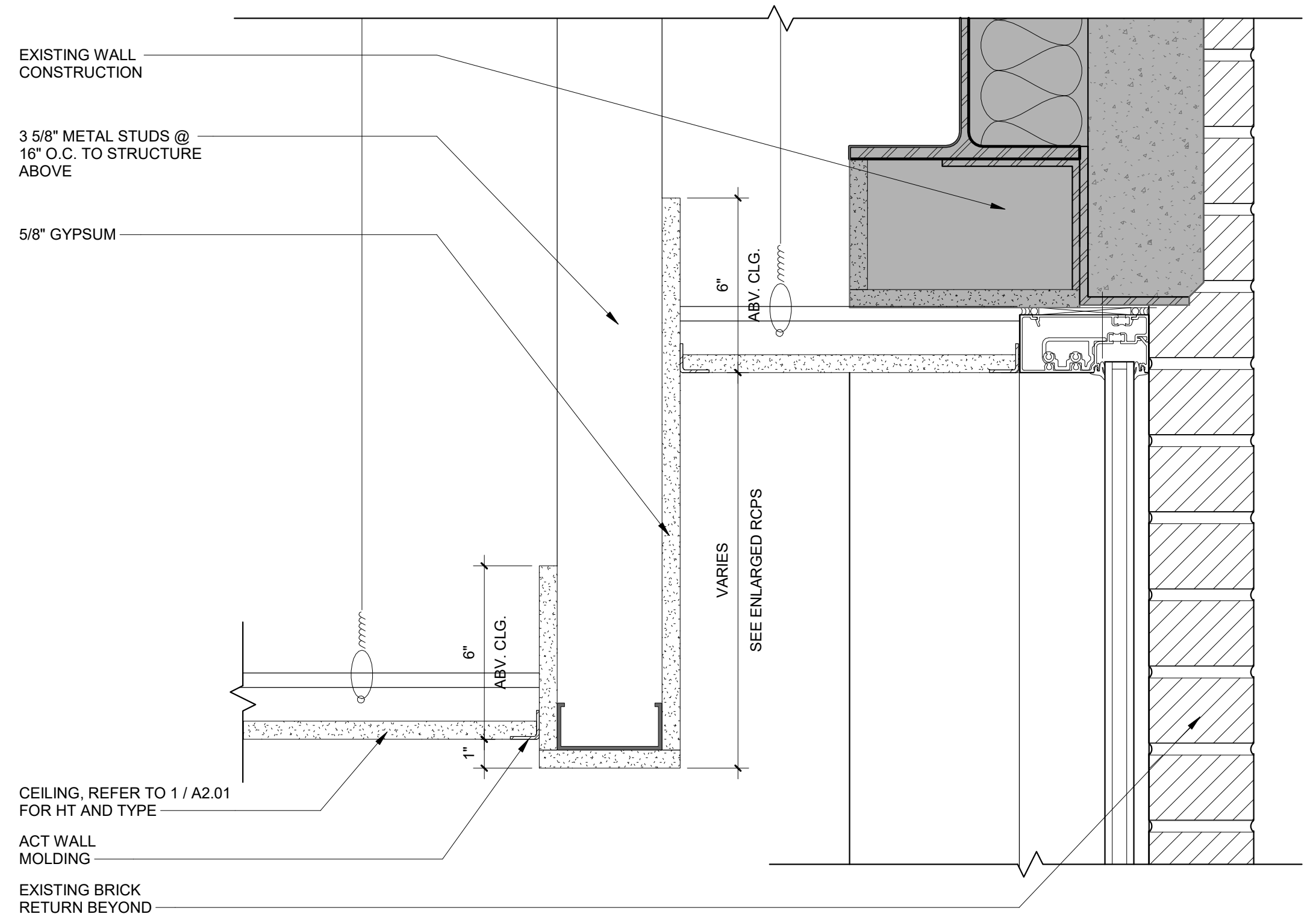
5 CEILING TRANSITION - GWB HEADER / ACT HEIGHT CHANGE
3" = 1'-0"



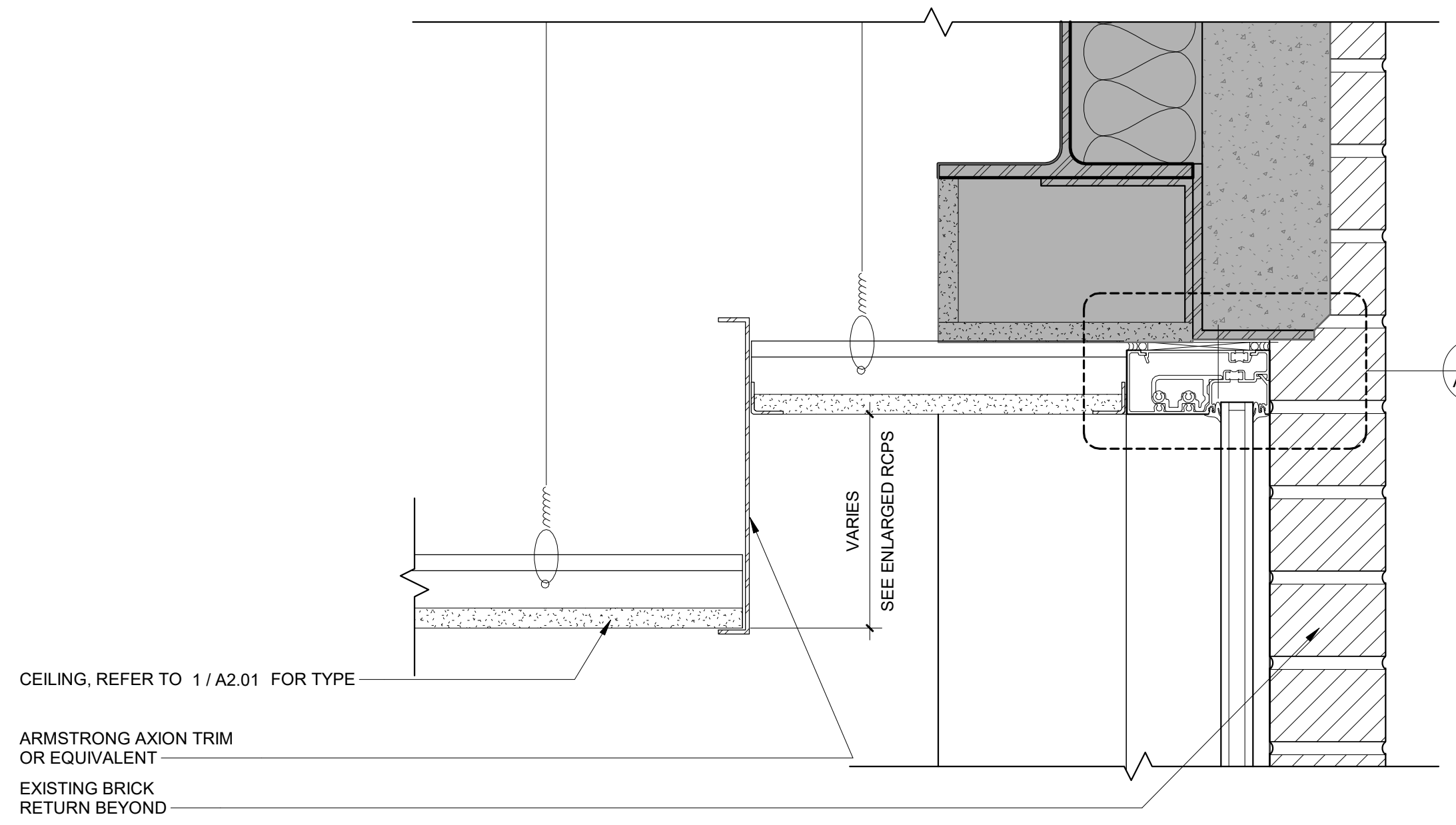
4 CEILING TRANSITION - GWB HEADER / ACT
3" = 1'-0"



3 CEILING DETAIL @ AREA 'A' KINDERGARTEN CLASSROOM
3" = 1'-0"



2 CEILING DETAIL - AREA 'D' EXISTING CLASSROOM
3" = 1'-0"



1 CEILING DETAIL - AREA 'C' EXISTING CLASSROOM
3" = 1'-0"



OWNER
West Chester Area School District
phone: 484.266.1281
CONTACT PERSON: Damon Gonzaga

STRUCTURAL ENGINEER
Baker, Ingram & Associates
phone: 856.310.1491
CONTACT PERSON: Brian D. McGlade, PE

Project Address:
641 Boot Road
West Chester, PA 19380

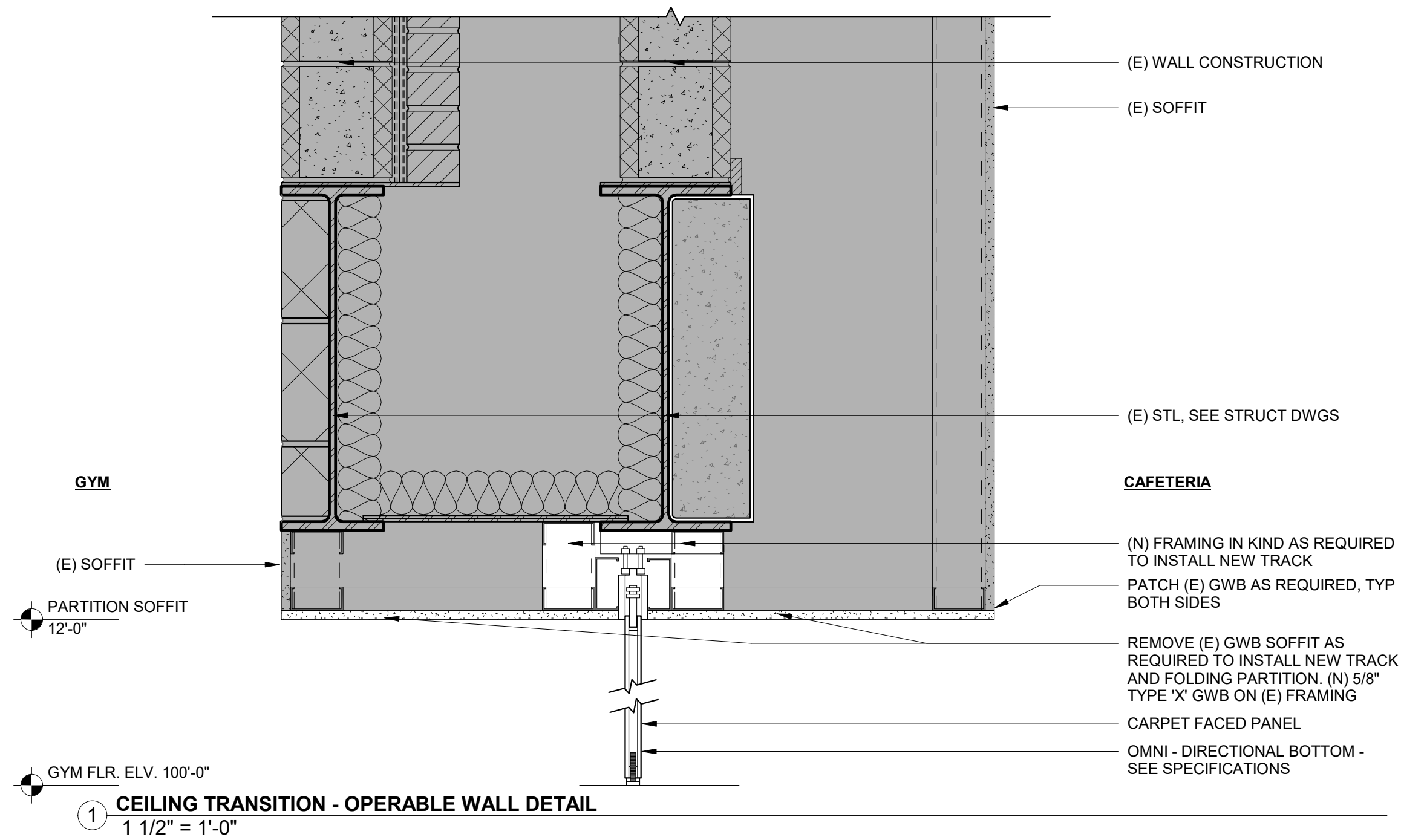
Seal

Warning: Actual conditions may vary from conditions shown on this drawing. Confirm all information in the field before proceeding with any work and notify the Architect in writing if a variation is discovered.

[illegible]

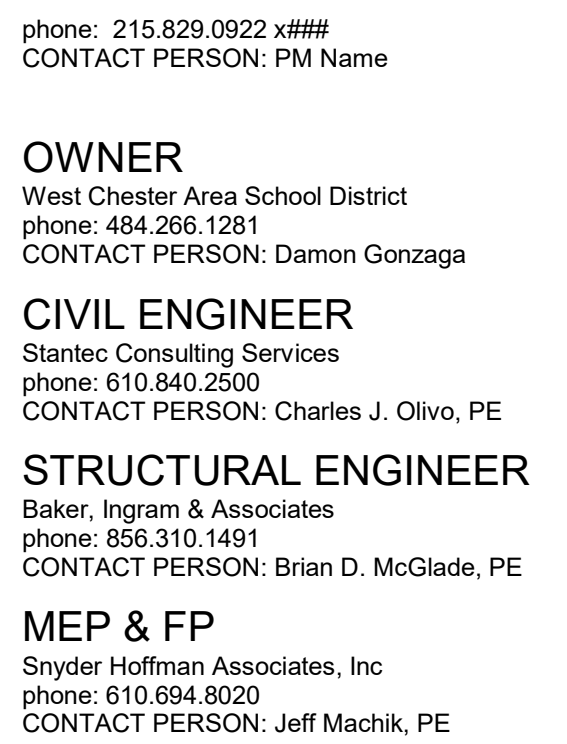
Sheet No.

© Copyright 2023 Blackney Hayes Architects.



NOT FOR CONSTRUCTION

10/31/2023 5:32:58 PM



Mary C. Howse
Elementary

Sheet Title:

MILLWORK /
CASEWORK DETAILS

DUTY TO INSPECT CONTRACT DOCUMENTS PRIOR TO STARTING WORK:

Any party who relies in part or whole on the content of these Construction Documents shall, before beginning any work, be responsible for fully inspecting the complete Construction Documents, including but not limited to the Specifications, and Addenda, for completeness, conflicts, scope of work, and suitability for constructing the building. All parties relying on these documents represent and warrant that they have read and understood them and are knowledgeable regarding industry standards, product requirements and code requirements and therefore are qualified to fully evaluate and interpret the Contract documents. All parties relying on these documents must, prior to beginning work, submit all requests for clarifications and additional information to the Architect in writing. **All parties who begin work hereby certify that they are qualified to be suitable for their intended uses unless noted in specific writing exception hereof.**

Warning: Actual conditions may vary from conditions shown on this drawing. Confirm all information in the field before proceeding with any work and notify the Architect in writing if a variation is discovered.

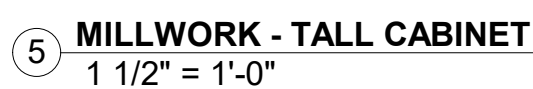
This drawing is not to be copied or transmitted in any form without the express written authorization of Blackney Hayes Architects. All ideas and concepts depicted or suggested in this drawing are the property of Blackney Hayes Architects.

Date	Comments	
03.24.2023	SCHEMATIC DESIGN	
05.26.2023	DESIGN DEVELOPMENT	
07.28.2023	60% CD SET	
09.19.2023	90% CD SET	
10.31.2023	BID SET	

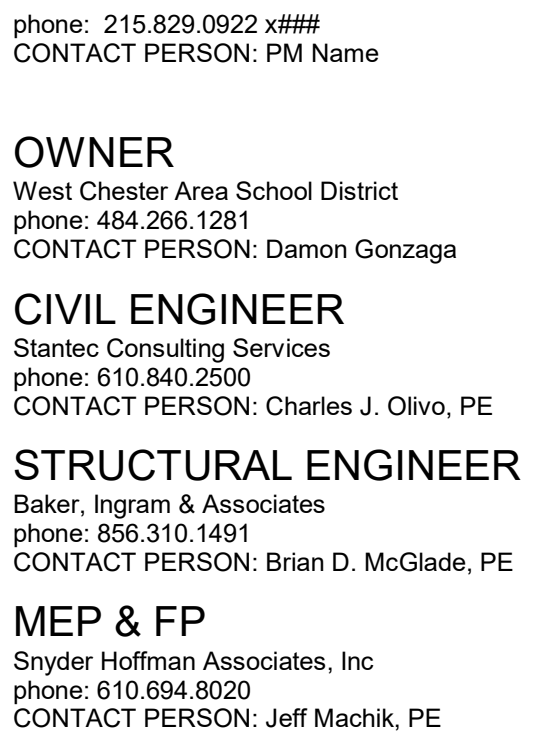
BHA Job Number:	22-114
Scale:	As indicated
Drawn By:	BH
Checked By:	NM
Approved By:	DJ
Sheet No.	

A8.40

© Copyright 2023 Blackney Hayes Architects



10/31/2023 5:33:01 PM



Project Address:
641 Boot Road
West Chester, PA 19380

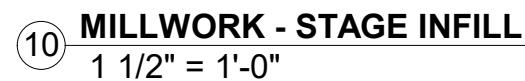
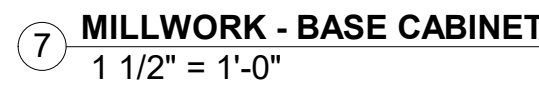
Seal

[illegible]

A8.41

© Copyright 2023 Blackney Hayes Architects

1. GENERAL CONTRACTOR SHALL CLOSELY COORDINATE ALL TRADES INTERACTING WITH THE MILLWORK SUBCONTRACTOR.
2. ALL CABINET WORK TO BE SECURELY FASTENED THROUGH CONSTRUCTION TO INTERNAL STUDS OR GROUND. SUPPLY AS REQUIRED. THE MILLWORK SUBCONTRACTOR SHALL BE RESPONSIBLE FOR CLEAR ALL MILLWORK AND ALL REQUIRED BLOCKING. GENERAL CONTRACTOR SHALL COORDINATE WITH MILLWORK SUBCONTRACTOR ON THE REQUIRED SIZES, LOCATIONS AND EXTENT OF THESE BLOCKS. MILLWORK TO BE ATTACHED TO THE PREMISES SHALL COMPLY WITH ALL APPLICABLE CODES AND REQUIREMENTS OF THE LOCAL TOWNSHIP.
3. GENERAL CONTRACTOR'S MILLWORK SUBCONTRACTOR SHALL FIELD VERIFY ALL DIMENSIONS PRIOR TO FABRICATION.
4. ALL MATERIAL MUST BE NEW AND OF FIRST CLASS QUALITY.
5. SHOP FINISHED SAMPLES OF PANELING AND HARDWOODS WITH SPECIFIED FINISHES SHALL BE SUBMITTED TO BLACKNEY HAYS ARCHITECTS AS PER WRITTEN SPECIFICATIONS.
6. THE GENERAL CONTRACTOR SHALL SUBMIT SHOP DRAWINGS TO ARCHITECT FOR ALL CUSTOM ARCHITECTURAL MILLWORK INCLUDING DIMENSIONED PLANS, ELEVATIONS, LARGE SCALE DETAILS OF CONSTRUCTION AND CROSS SECTIONS. SHOP DETAILS AND ELEVATIONS SHALL SHOW THE LOCATION OF FLOORS, WALLS AND BASES. INCLUDE LAYOUT OF UNITS WITH RELATIONSHIP TO SURROUNDING WALLS, DOORS AND OTHER BUILDING COMPONENTS. SHOW PROPOSED JOINT LOCATION IN TOPS, PROFILES AND ELEVATIONS. SHOWING LOCATIONS OF ATTACHMENT PLATES, PROVIDE FINISHED HARDWARE SCHEDULE, KEYED TO PLANS, ELEVATIONS AND DETAILS.
7. WHERE MEMBERS ARE MITERED OR BUTTED, THEY SHALL BE JOINED AT JOINTS INDICATED ON SHOP DRAWINGS AND SECURED IN A MANNER TO INSURE AGAINST SPLITTING. JOINTS SHALL BE LOCATED AT JOINTS OUTERS AT WET LOCATIONS SHALL BE LOCATED 24" MIN FROM SINK CUT-OUTS.
8. MILLWORK SUBCONTRACTOR TO PROVIDE CUT-OUTS FOR PLUMBING WORK, ELECTRICAL, TELEPHONE AND DATA OUTLETS WHERE THEY OCCUR ON OR BEHIND MILLWORK AND THEY SHALL PROVIDE GROMMETS IN COUNTERTOPS AS LOCATED IN THE FIELD BY BLACKNEY HAYS ARCHITECTS. GROMMETS SHALL BE 3" IN DIAMETER.
9. ALL FINISHED WORK SHALL, AS FAR AS PRACTICAL, BE ASSEMBLED AND FINISHED IN SITU AND DELIVERED TO THE BUILDING READY TO ERECT. WORK SHALL BE INSTALLED STRAIGHT, PLUMB, LEVEL AND IN TRUE ALIGNMENT, NEATLY FINISHED AND SCRIBED AND THOROUGHLY SECURED. MILLWORK SUBCONTRACTOR TO FURNISH AND INSTALL FILLER AS NEEDED. ALL REQUIRED FIELD TOUCH-UP IS TO BE PERFORMED BY THE MILLWORK SUBCONTRACTOR.
10. THE ARCHITECTURAL WOODWORK INSTITUTE QUALITY STANDARDS AND GUIDE SPECIFICATIONS ARE TO BE CONSIDERED AS PART OF THESE DOCUMENTS AND APPLY UNLESS ALTERED IN PROJECT SPECIFICATIONS AND OR DRAWINGS. MILLWORK SHALL BE FREE FROM ALL MACHINE AND TOOL MARKING, ABRASIONS, RAISED GRAIN AND OTHER SURFACE DEFECTS. SURFACES OF NEW EXPOSED WOOD SURFACES SHALL BE UNIFORM IN COLOR AND GRAIN. END GRAINS OF WOOD SHALL NOT BE EXPOSED.
11. ALL FINISHED MILLWORK SHALL BE ARCHITECTURAL WOODWORK INSTITUTE'S PREMIUM GRADE, TR-3 FINISHED SYSTEM FOR WOOD PIECES AND ALL PLASTIC LAMINATE SHALL BE ARCHITECTURAL WOODWORK INSTITUTE'S CUSTOM GRADE SYSTEM.
12. END PANELS TO HAVE PLAIN FINISH, UNLESS NOTED OTHERWISE.
13. FILLER PANELS TO MATCH PATTERN OF ADJACENT MILLWORK.
14. ALL MILLWORK BY MILLWORK SUBCONTRACTOR.



NOT FOR CONSTRUCTION

10/31/2023 5:33:03 PM



Project:
Mary C. Howse
Elementary

Sheet Title:
MISCELLANEOUS
DETAILS

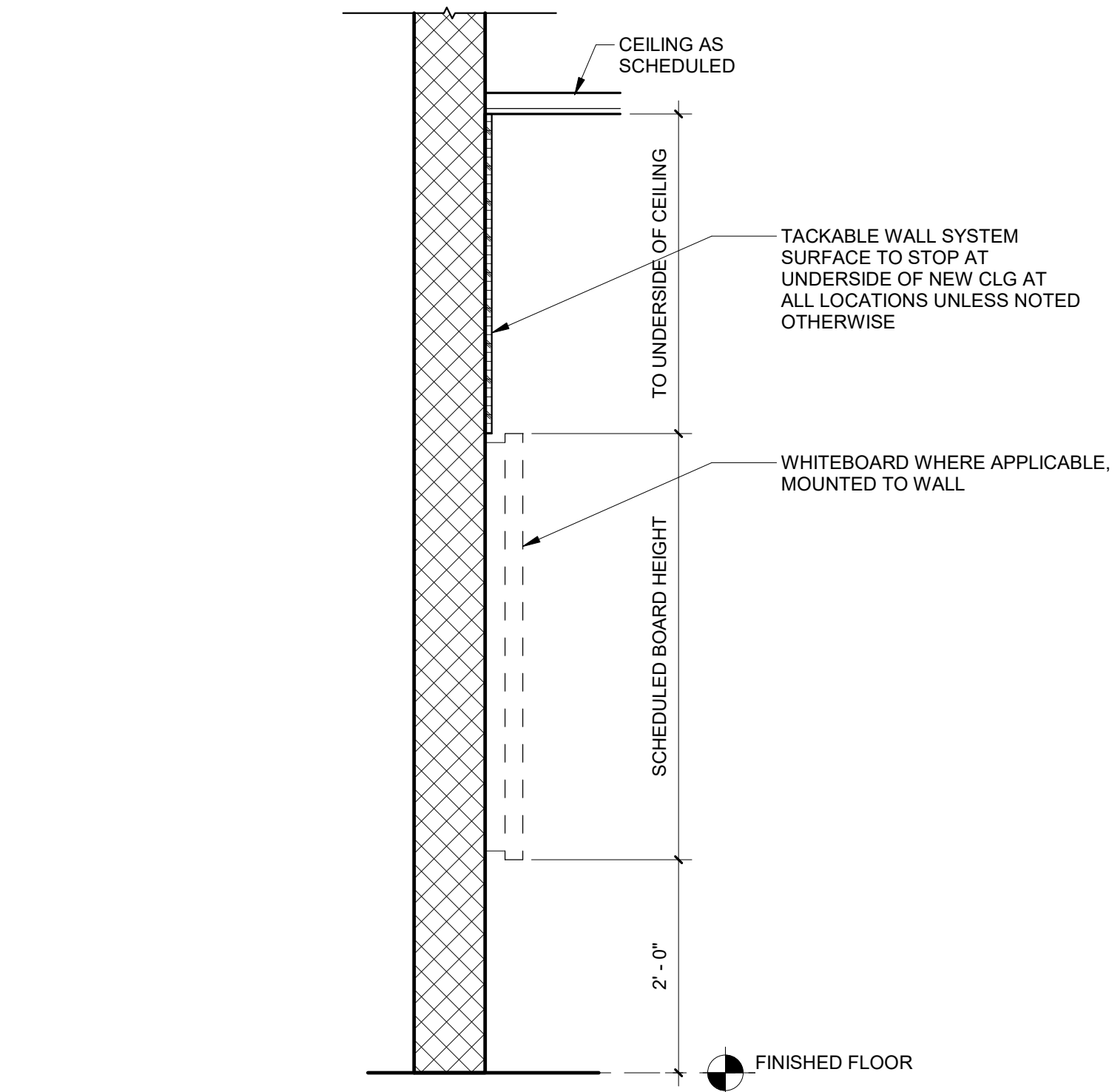
NOT TO INSPECT CONTRACT DOCUMENTS PRIOR TO STARTING WORK.

No party who relies in part or whole on the content of these Construction Documents shall, before beginning their work, be responsible for fully inspecting the complete Construction Documents. Controlling responsibility for the specifications, and Addenda, for completeness, conflicts, omissions of work, and suitability for constructing the building, all parties relying on these documents represent and warrant that they are the areas of responsibility and are knowledgeable regarding industry standards, product requirements and code requirements and therefore are qualified to fully evaluate and interpret the Construction Documents. All parties who rely on the Construction Documents must, prior to beginning work, submit all requests for clarifications and additional information to the Architect in writing. All parties who begin work without the certainty that the documents are suitable for their intended purposes unless noted in specific written exception beforehand.

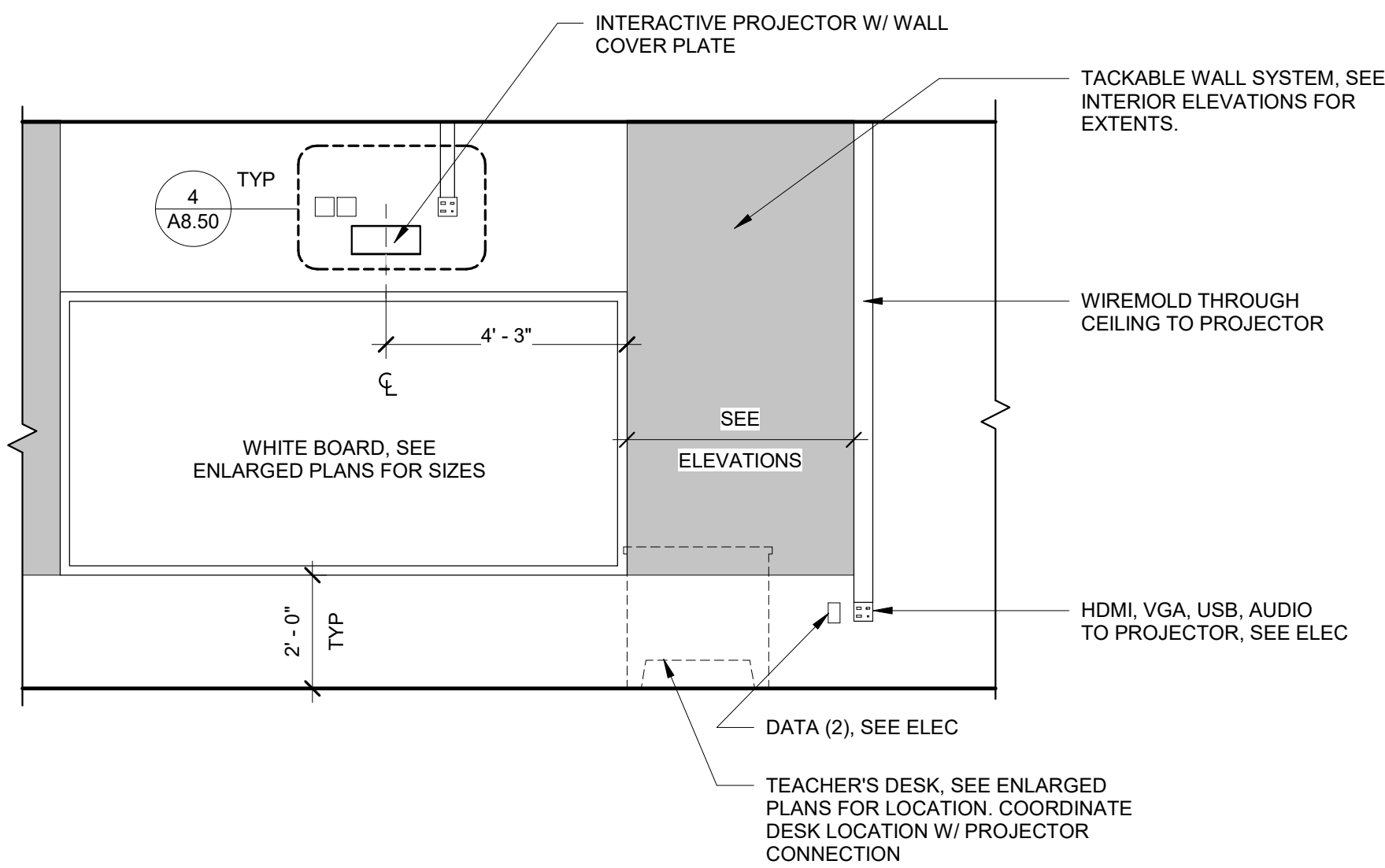
Date	Comments	
3.24.2023	SCHEMATIC DESIGN	△
5.26.2023	DESIGN DEVELOPMENT	
7.28.2023	60% CD SET	
9.19.2023	90% CD SET	
10.31.2023	BID SET	

A8.50

NOT FOR CONSTRUCTION



2 SECTION DETAIL - TYPICAL TACKABLE WALL SYSTEM
3/4" = 1'-0"



1 TYPICAL TEACHING WALL ELEVATION
3/8" = 1'-0"

GLAZING NOTES

1. ALL GLAZING UNITS IGU UON. OTHER TYPES AS INDICATED.

■ INSULATED GLAZING UNIT SPANDREL
GL-1 1/4" TEMPERED GLASS
GL-1S 1/4" TEMPERED SAFETY GLASS
FRGL-45 45-MINUTE RATED FIRE RESISTANT GLAZING
FRGL-90 90-MINUTE RATED FIRE RESISTANT GLAZING
IG-1 1" INSULATED GLASS, SAFETY RATED
IGL-1S 1-3/16" INSULATED LAMINATED GLASS, SAFETY RATED
IMP INSULATED METAL PANEL - SUBMIT FULL RANGE OF COLORS

2. REFER TO **A9.10 AND A9.20** FOR DOOR INFORMATION
3. SEE SPEC SECTION 088000 FOR MORE GLAZING INFORMATION.
4. ALL OPENINGS TO BE VIF.

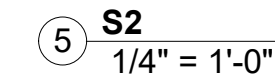
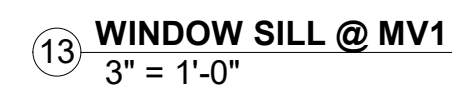
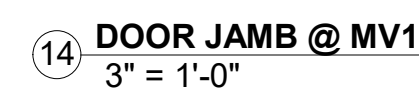
DOOR AND FRAME NOTES

1. REFER TO SPEC FOR DOOR & FRAME GAUGES, ANCHORS, AND REINFORCEMENT.
2. REFER TO SPEC FOR DOOR HARDWARE INFORMATION.
3. ALL DOOR GLAZING TO BE 1/4" SAFETY GLASS UON.
4. ALL GLAZING IN RATED DOORS TO BE FIRE PROTECTION RATED GLAZING.
5. REFER TO **A9.10 AND A9.20** FOR ADDITIONAL FRAME DETAILS.
6. PAIRED DOOR TYPES ARE INDICATED BY NOTING "2" IN FRONT OF A DOOR TYPE. E.G. 2F IS A PAIRED TYPE F (FLUSH) DOOR.
7. GC SHALL VERIFY DOOR SIZE AT ALL EXISTING FRAMES.
8. SCHEDULE DESIGNATIONS AS FOLLOWS:
GL - GLASS
AL - ALUMINUM
HM - HOLLOW METAL
FF - FACTORY FINISH
WD - WOOD
IMP - INSULATED METAL PANEL
PTD - PAINTED, OPAQUE FINISH
STN - STAINED, TRANSPARENT FINISH

FOR OTHER DESIGNATIONS, REFER TO ABBREVIATIONS LIST.

DOOR SCHEDULE

DOOR NO.		ROOM LOCATION				DOOR				FRAME				FIRE RATING		HARDWARE SET		COMMENTS
ROOM NO.		ROOM NAME	TYPE	WIDTH	HEIGHT	MATERIAL	FINISH	TYPE	MATERIAL	FINISH								
001	001	BOYS	F	3'-0"	7'-2"	WD	STN	A	HM	PTD	-	009		EXISTING FRAME TO REMAIN				
002	002	GIRLS	F	3'-0"	7'-2"	WD	STN	A	HM	PTD	-	009		EXISTING FRAME TO REMAIN				
003	003	TLT	F	3'-0"	7'-0"	WD	STN	B	HM	PTD	-	014						
004	004	TLT	F	3'-0"	7'-0"	WD	STN	B	HM	PTD	-	014						
005	005	STORAGE	F	3'-0"	7'-0"	WD	STN	B	HM	PTD	-	019						
006	006	ELEC.	F	3'-0"	7'-0"	WD	STN	B	HM	PTD	45 MIN	018						
007	007	BOYS	F	3'-0"	7'-0"	WD	STN	B	HM	PTD	-	009						
008	008	GIRLS	F	3'-0"	7'-0"	WD	STN	B	HM	PTD	-	009						
009	009	JC	F	3'-0"	7'-0"	WD	STN	B	HM	PTD	-	005		EXISTING FRAME TO REMAIN				
010	010	IDF	F	3'-0"	7'-0"	WD	STN	B	HM	PTD	-	021		CARD READER				
011	011	ELEC.	2F	6'-0"	7'-2"	WD	STN	A	HM	PTD	45 MIN	031		EXISTING FRAME TO REMAIN				
012	012	IDF	2F	6'-0"	7'-0"	WD	STN	B	HM	PTD	-	032		CARD READER				
013	013	TLT	F	3'-0"	7'-0"	WD	STN	B	HM	PTD	-	014						
014	014	TLT	F	3'-0"	7'-0"	WD	STN	B	HM	PTD	-	014						
015	015	STORAGE	F	3'-0"	7'-0"	WD	STN	B	HM	PTD	-	002						
016	016	GIRLS	F	3'-0"	7'-0"	WD	STN	B	HM	PTD	-	009						
017	017	JC	F	3'-0"	7'-0"	WD	STN	B	HM	PTD	-	030						
018	018	BOYS	F	3'-0"	7'-0"	WD	STN	B	HM	PTD	-	009						
019	019	TLT	F	3'-0"	7'-0"	WD	STN	B	HM	PTD	-	014						
020	020	TLT	F	3'-0"	7'-0"	WD	STN	B	HM	PTD	-	014						
021	021	GIRLS	F	3'-0"	7'-0"	WD	STN	B	HM	PTD	-	009						
022	022	BOYS	F	3'-0"	7'-0"	WD	STN	B	HM	PTD	-	010						
023	023	E.E.R	F	3'-0"	7'-0"	WD	STN	B	HM	PTD	45 MIN	044		180 DEGREE SWING				
024	024	JAN. CLST	F	3'-0"	7'-0"	WD	STN	B	HM	PTD	-	007						
025	025	IDF	F	3'-0"	7'-0"	WD	STN	B	HM	PTD	-	021		CARD READER				
026.1	026	MAINTENANCE	F	3'-0"	7'-0"	HM	PTD	B	HM	PTD	-	059						
026.2	026	MAINTENANCE	OH	8'-0"	7'-4"	HM	FF	-	-	FF	-	061		OVERHEAD DOOR				
027.1	027	ELEC.	F	3'-0"	7'-0"	HM	PTD	B	HM	PTD	45 MIN	045						
027.2	027	ELEC.	F	3'-0"	7'-0"	HM	PTD	B	HM	PTD	45 MIN	060		CARD READER				
028.1	028	BOILER ROOM	F	3'-0"	7'-2"	WD	STN	A	HM	PTD	90 MIN	043		EXISTING FRAME TO REMAIN				
028.2	028	BOILER ROOM	F	6'-0"	7'-0"	HM	PTD	B	HM	PTD	90 MIN	062		CARD READER				
029	029	TLT	F	3'-0"	7'-0"	WD	STN	B	HM	PTD	-	015						
030	030	ELEC.	F	3'-0"	7'-2"	WD	STN	A	HM	PTD	45 MIN	034		EXISTING FRAME TO REMAIN				
033	033	CLST	F	2'-8"	7'-2"	HM	STN	A	HM	PTD	-	030		EXISTING FRAME TO REMAIN				
100.1	100	GYMNASIUM	2N	6'-0"	7'-2"	WD	STN	A	HM	PTD	-	036		EXISTING FRAME TO REMAIN				
100.2	100	GYMNASIUM	2F	6'-0"	7'-0"	HM	PTD	B	HM	PTD	-	065		CARD READER				
100.3	100	GYMNASIUM	2F	6'-0"	7'-0"	HM	PTD	B	HM	PTD	-	064						
100A	100A	GYM OFFICE	HG	3'-0"	7'-2"	WD	STN	A	HM	PTD	-	027		EXISTING FRAME TO REMAIN				
100B	100B	GYM STORAGE	2F	6'-0"	7'-2"	WD	STN	A	HM	PTD	-	033		EXISTING FRAME TO REMAIN				
100C	100C	GYM STORAGE	2F	6'-0"	7'-2"	WD	STN	A	HM	PTD	-	033		EXISTING FRAME TO REMAIN				
101.1	101	RECEPTION	N	3'-0"	7'-0"	WD	STN	B	HM	PTD	-	053		CARD READER				
101.2	101	RECEPTION	N	3'-0"	7'-0"	WD	STN	B	HM	PTD	-	001						
102.1	102	CAFETERIA	2N	6'-0"	7'-0"	WD	STN	A	HM	PTD	-	037		EXISTING FRAME TO REMAIN				
102.2	102	CAFETERIA	2N	6'-0"	7'-0"	WD	STN	A	HM	PTD	-	037		EXISTING FRAME TO REMAIN				
102B.1	102B	LIFT	F	3'-0"	7'-0"	WD	STN	A	HM	PTD	-	039		EXISTING FRAME TO REMAIN				
102B.2	102B	LIFT	F	3'-0"	7'-0"	WD	STN	A	HM	PTD	-	039		EXISTING FRAME TO REMAIN				
102C.1	102C	PLATFORM STAIR	F	3'-0"	7'-2"	WD	STN	A	HM	PTD	-	030		EXISTING FRAME TO REMAIN; GO TO REINSTALL HARDWARE FOR ADA LIFT				
102C.2	102C	PLATFORM STAIR	F	3'-0"	7'-2"	WD	STN	A	HM	PTD	-	040		EXISTING FRAME TO REMAIN; GO TO REINSTALL HARDWARE FOR ADA LIFT				
102D	102D	STAGE STOR.	2F	6'-0"	7'-0"	WD	STN	B	HM	PTD	-	041		EXISTING FRAME TO REMAIN				
102E	102E	TABLE & CHAIR STORAGE	2F	6'-0"	7'-2"	WD	STN	A	HM	PTD	-	035		EXISTING FRAME TO REMAIN				
103	103	PRINCIPAL	F	3'-0"	7'-0"	WD	STN	B	HM	PTD	-	016						
103A	103A	PRINC. TLT	F	3'-0"	7'-0"	WD	STN	B	HM	PTD	-	013						
104.1	104	KITCHEN	F	3'-0"	7'-0"	WD	STN	B	HM	PTD	-	038						
104.2	104	KITCHEN	F	3'-0"	7'-0"	WD	STN	B	HM	PTD	-	038						
104A	104A	KITCHEN STORAGE	-	3'-0"	7'-0"	-	-	C	HM	PTD	-	042		CASED OPENING; EXISTING FRAME TO REMAIN				
104B	104B	KITCHEN OFF.	F	3'-0"	7'-0"	-	STN	B	HM	PTD	-	006						
104C.1	104C	RECEIVING / LOADING	-	3'-0"	7'-0"	-	-	C	HM	PTD	-	042		CASED OPENING; EXISTING FRAME TO REMAIN				
104C.2	104C	RECEIVING / LOADING	F	3'-0"	7'-0"	HM	PTD	B	HM	PTD	-	063						
105.1	105	MAILROOM	F	3'-0"	7'-0"	WD	STN	B	HM	PTD	-	002						
105.2	105	MAILROOM	F	3'-0"	7'-0"	WD	STN	B	HM	PTD	-	002						
107	107	HEALTH SUITE	N	3'-0"	7'-0"	WD	STN	B	HM	PTD	-	008						
107A	107A	TLT	F	3'-0"	7'-0"	WD	STN	B	HM	PTD	-	011						
107B	107B	NURSE OFF.	HG	3'-0"	7'-0"	WD	STN	B	HM	PTD	-	006						
107C	107C	CLST	F	3'-0"	7'-0"	WD	STN	B	HM	PTD	-	002						
107D	107D	EXAM	F	3'-0"	7'-0"	WD	STN	B	HM	PTD	-	012						
107E	107E	CLST	F	3'-0"	7'-0"	WD	STN	B	HM	PTD	-	002						
108.1	108	CONFERENCE	F	3'-0"	7'-0"	WD	STN	B	HM	PTD	-	017						
108.2	108	CONFERENCE	F	3'-0"	7'-0"	WD	STN	B	HM	PTD	-	017						
109	109	KINDERGARTEN	N	3'-0"	7'-0"	WD	STN	B	HM	PTD	-	001						
110	110	KINDERGARTEN	N	3'-0"	7'-0"	WD	STN	B	HM	PTD	-	001						
111	111	KINDERGARTEN	N	3'-0"	7'-2"	WD	STN	A	HM	PTD	-	001		EXISTING FRAME TO REMAIN				
112	112	RESOURCE	N	3'-0"	7'-0"	WD	STN	B	HM	PTD	-	001						
113	113	KINDERGARTEN	N	3'-0"	7'-2"	WD	STN	A	HM	PTD	-	001		EXISTING FRAME TO REMAIN				
114	114	ELL	N	3'-0"	7'-0"	WD	STN	B	HM	PTD	-	001						
115	115	CLASSROOM	N	3'-0"	7'-0"	WD	STN	B	HM	PTD	-	001						
116	116	CLASSROOM	N	3'-0"	7'-0"	WD	STN	B	HM	PTD	-	001						
117	117	CLASSROOM	N	3'-0"	7'-0"	WD	STN	B	HM	PTD	-	001						
118	118	CLASSROOM	N	3'-0"	7'-0"	WD	STN	B	HM	PTD	-	001						
119	119	CLASSROOM	N	3'-0"	7'-0"	WD	STN	B	HM	PTD	-	001						
201	201	CLASSROOM	N	3'-0"	7'-0"	WD	STN	B	HM	PTD	-	001						
202	202	ART STORAGE	F	3'-0"	7'-2"	WD	STN	A	HM	PTD	-	025		EXISTING FRAME TO REMAIN				
202A	202A	IDF	F	2'-4"	7'-2"	WD	STN	A	HM	PTD	-	022		EXISTING FRAME TO REMAIN; CARD READER				
202B	202B	KILN	F	3'-0"	7'-2"	WD	STN	A	HM	PTD	45 MIN	024		EXISTING FRAME TO REMAIN				
203	203	READING LAB	N	3'-0"	7'-0"	WD	STN	B	HM	PTD	-	001						
203A.1	203A	R.S.	N	3'-0"	7'-0"	WD	STN	B	HM	PTD	-	023						
203A.2	203A	R.S.	N	3'-0"	7'-0"	WD	STN	B	HM	PTD	-	001						
203B.1	203B	R.S.	N	3'-0"	7'-0"	WD	STN	B	HM	PTD	-	023						
203B.2	203B	R.S.	N	3'-0"	7'-0"	WD	STN	B	HM	PTD	-	001						
203C.1	203C	R.S.	N	3'-0"	7'-0"	WD	STN	B	HM	PTD	-	023						
203C.2	203C	R.S.	N	3'-0"	7'-0"	WD	STN	B	HM	PTD	-	001						
204	204	ART ROOM	N	3'-0"	7'-0"	WD	STN	B	HM	PTD	SMOKE	067						
205	205	TECH	N	3'-0"	7'-0"	WD	STN	B	HM	PTD	-	006						
206	206	CLASSROOM	N	3'-0"	7'-0"	WD	STN	B	HM	PTD	-	001						
207	207	CLASSROOM	N	3'-0"	7'-0"	WD	STN	B	HM	PTD	-	001						
208	208	CLASSROOM	N	3'-0"	7'-0"	WD	STN	B	HM	PTD	-	001						
209	209	RESOURCE	N	3'-0"	7'-2"	WD	STN	A	HM	PTD	-	027		EXISTING FRAME TO REMAIN				
210	210	SPEECH	N	3'-0"	7'-2"	WD	STN	A	HM	PTD	-	001		EXISTING FRAME TO REMAIN				
211.1	211	LIBRARY	2HG	6'-0"	7'-2"	WD	STN	A	HM	PTD	-	029						
211.2	211	LIBRARY	HG	3'-0"	7'-2"	WD	STN	A	HM	PTD	-	028						
212	212	CALMING ROOM	N	3'-0"	7'-0"	WD	STN	B	HM	PTD	-	026						
213	213	DESIGN LAB	HG	3'-0"	7'-0"	WD	STN	B	HM	PTD	-	027A		EXISTING FRAME TO REMAIN				
300	300	FACULTY WORKROOM	F	3'-0"	7'-0"	WD	STN	B	HM	PTD	-	004		EXISTING FRAME TO REMAIN				
301	301	FACULTY DINING	F	3'-0"	7'-0"	WD	STN	B	HM	PTD	-	003						
302	302	OT / DT	N															



BLACKNEY
HAYES
ARCHITECTS

Scale:	As indicated
Drawn By:	BH
Checked By:	NM
Approved By:	DJ

Sheet No.

A9.20

© Copyright 2022 Blackney Hayes Architects

DUTY TO INSPECT CONTRACT DOCUMENTS PRIOR TO STARTING WORK

Architect shall read, interpret or write on the content of these Construction Documents fully, shall, before beginning any work, be responsible for fully inspecting the complete set of Contract Documents including all Drawings, Specifications, and Addenda, for completeness, conflicts, omissions and errors, and shall advise the Contractor of the building. All parties relying on these documents represent that they are familiar with the areas of their responsibility, and are knowledgeable regarding industry standards, product requirements and code requirements and therefore are qualified to fully understand and interpret the contract documents. All parties relying on these documents must, prior to beginning work, submit all requests for clarifications and additional information to the Architect in writing. **All parties who begin work hereby certify that the documents are suitable for their intended purposes unless noted in specific writing exception belowhand.**

Warning: Actual conditions may vary from conditions shown on this drawing. Confirm all information in the field before proceeding with any work, and notify the Architect in writing if a variation is discovered.

This drawing is not to be copied or transmitted in any form or by any means, electronic or mechanical, without the written permission of the Architect.

Blackney Hayes Architects. All ideas and concepts depicted or suggested in this drawing are the property of Blackney Hayes Architects.

Release		
Date	Comments	△
03/24/2023	SCHEMATIC DESIGN	
05/26/2023	DESIGN DEVELOPMENT	
07/28/2023	90% CD SET	
09/19/2023	90% PD SET	
10/31/2023	BID SET	

BHA Job Number:	22-114
Scale:	As indicated
Drawn By:	BH
Checked By:	NM
Approved By:	DJ
Sheet No.	

A9.20

© Copyright 2022 Blackney Hayes Architects

10/31/2023 5:33:16 PM

NOT FOR CONSTRUCTION

