



---

**Share Food Program  
Delaware County Warehouse Renovation  
General Construction - Request for Proposals  
Addendum #2**

---

To All Interested Contractors,

Please see below and attached for additional information regarding the RFP.

If you have any questions regarding the contents, please contact me at 267-318-2589 or at [rfinlan@watchdogpm.com](mailto:rfinlan@watchdogpm.com).

Thank you for your interest in working with Share Food Program and Watchdog.

Sincerely,

Rebecca Finlan  
Senior Project Manager  
Watchdog Real Estate Project Management



## Share Food Program – Delaware County Warehouse Renovation GC RFP Addendum #2

Please see attached Exhibit H – Architect Addendum #2. Please note that these changes were already included in the revised bid set that was circulated yesterday. Version 3 of the Bid Set is the correct version at this time. As a reminder, a revised Exhibit E – Wage Rates was sent out this morning with a date of 11.11.22.

### RFP Schedule

RFP Issue Date	November 8, 2022
On-Site Walk Through	November 14, 2022 @ 11 a.m.
Additional On-Site Walk Through	November 18, 2022 @ 9 a.m.
Questions Due	November 22, 2022
Answers Issued	November 29, 2022
Proposal Due	December 2, 2022 @ 12 p.m.
Bid Opening (via Zoom)	December 2, 2022 @ 1 p.m.

### CRITICAL DATES Schedule

GC Interviews	December 8, 2022
Award Contract	December 22, 2022
Mobilization	January 16, 2023
Substantial Completion	July 7, 2023

### Exhibit Schedule

Exhibit A	GC Bid Form
Exhibit B	Specifications
Exhibit C	Drawings
Exhibit D	Phase I
Exhibit E	Wage Rates – 11.11.22
Exhibit F	Architect Addendum #1
Exhibit G	Revised Bid Set
Exhibit H	Architect Addendum #2



**ADDENDUM NO. 2**

**DATE:** November 21, 2022

**TO:** Interested Bidders

**From:** Janice Woodcock, AIA

**RE:** Share Food Program - Delaware County Warehouse Renovation

This bulletin has been issued prior to the receipt of bids and shall become a part of the construction contract.

**Instructions:**

Remove and replace drawing -C0 Dated 11/15/2021 and replace it with drawing C-0 Dated 11/21/2022. Clarified paving location on Site Plan, paving details 8 & 9, added HM window detail 7.

Remove and replace drawing D-1 Dated 11/15/2021 and replace it with drawing D-1 Dated 11/21/2022. Revised removal note 16 and clarified removal scope drawings 2 & 4.

Remove and replace drawing A-1 Dated 11/15/2021 and replace it with drawing A-1 Dated 11/21/2022. Changed specification for water cooler, added reference to lintel detail on drawing 1, revised specification for refrigerator, detail 8, revised specification for Epoxy floor, finish schedule.

Remove and replace S-2 Dated 11/8/2022 and insert Sheets S-1 & S-2 Dated 11/21/2022. Added lintel details at large interior masonry opening and at windows from offices into warehouse.

Add Specification Section 08330 dated November 21, 2022 and revised table of contents to Project Manual.

A conformed drawing set is being provided with this Addendum.

**Request for Information Responses:**

1. Question: Epoxy product specified requires company to install.  
Answer: Please see revised epoxy floor finish, Finish Schedule, Sheet A-1.
2. Question: Please provide spec for resurfacing work indicated as ADD Alternate 1 on C-0.  
Answer: See Asphalt Specification in Project Manual, and see added details 8 & 9, drawing C0.

3. Question: Please provide delineation on Site Plan drawings C-0 of region associated with Alternate 1 and Alternate 2  
Answer: Region to receive asphalt paving is shown on site plan, drawing C0. The region to receive gravel is the remainder of the site.
4. Question: Please confirm if work associated with drain indicated on Site Plan on drawing C-0 is part of the base bid or is an Alternate?  
Answer: Drain is base bid.
5. Question: Please confirm this is not a Multi-Prime project  
Answer: This is not a multi prime contract or bid.
6. Question: Exterior drawing A-2 issued with the original drawing set is excluded from Addendum 1. Please confirm drawing A2 is part of the updated drawing set.  
Answer: Set issued with A-2 included.
7. Question: Structural drawing S-1 issued with the original drawing set is excluded from Addendum 1. Please confirm drawing A2 is part of the updated drawing set.  
Answer: Set issued with A-2 included.
8. Question: Please provide wall infill detail west of freezer 112. No details provided but it does appear to have the existing opening infilled.  
Answer: Infill wall with 6" CMU installed flush with warehouse side.
9. Question: Please indicate where Removal Note 16 on D-1 applies on the plans  
Answer: Duplicate note removed from Drawing 1/D-1. We changed note 16 to clarify that the removal scope includes a concrete slab PLUS wood floor and floor joists over framed in those rooms.
10. Question: Note 18 'Remove existing Lintel, Masonry to make new enlarged opening' does not apply on north east area of the D-1. Confirm exclusion. (See attached)  
Answer: See above.
11. Question: Confirm raised platform in the north east section the building is to be removed (see attached)  
Answer: see above.
12. Question: Provide window header, jamb, and material details for frame types 3 and, in office 101 as shown on A-1  
Answer: See Detail 7/C-0.
13. Question: Detail 2/A1 indicates a foundation drain, please provide site plan showing



routing specification, etc.

Answer: There is no connection, just pipe and gravel surround.

14. Question: Please confirm the owner will provide bottle water dispenser and refrigerator on conference room 107.

Answer: Contractor to provide both water dispenser and refrigerator.

15. Question: No water is shown on the plumbing drawings to the bottle water dispenser and refrigerator. Please confirm.

Answer: Oasis B1RRHS Nautica Hot N' Cold Bottle Water Cooler, Part Number: B1RRHS does not need plumbing. See updated specification for refrigerator drawing 8/A-1.

16. Question: Provide specification/product details for New Motorized Coiling Door shown on drawing A-2.

Answer: Specification section added to Project Manual.

## END OF ADDENDUM 2

Prepared by:



Janice Woodcock, AIA, Principal

Attachments: Drawings C-, D-1, A-1, S-2 dated November 21, 2022, Specification Table of Contents and Specification Section 08330 dated November 21, 2022.

**DIVISION 00 - BIDDING AND CONTRACT REQUIREMENTS**

00 01 15	List of Drawings
00 00 02	Notice to Contractors
00 00 02	Non-collusion Affidavit
00 00 03	Instructions to Bidders
00 00 04	Bid Bond
00 00 05	Payment Bond
00 00 06	Performance Bond
00 00 07	General Contract Provisions
00 00 08	Supplemental Contract Provisions
00 00 09	Bid for Lump Sum Contracts
00 00 10	Subcontractor Declaration Form
00 00 11	Change Orders
00 00 12	Affirmative Action Requirements
00 00 13	Equal Employment Specifications
00 00 14	Nondiscrimination Clause
00 00 15	Conflict of Interest Records and Audits
00 00 16	MBEWBE Outreach
00 00 17	Provision of Training Certification
00 00 18	Certification of Air and Water Acts Compliance
00 00 19	Affidavit Accepting Workman's Comp
00 00 20	Certification of Compliance with Labor Standards)
00 00 20	Federal Labor Standards
00 00 21	Prevailing Wage Rates
00 00 22	Prime Contractors Questionnaire
00 0 023	MBEWBE Solicitation Statement
00 00 24	Subcontractors Questionnaire
00 00 25	Economic Opportunity Notification
00 00 26	Workforce Breakdown Form
00 00 27	Certification of Non-Segregated Facilities

00 00 29 Delco MBEWBE Directory

## **DIVISION 01 - GENERAL REQUIREMENTS**

## **DIVISION 02 – EXISTING CONDITIONS**

00 24 19 Selective Demolition

00 25 12 Asphalt Paving

## **DIVISION 03 – CONCRETE**

03 30 00 Cast-in-place Concrete

## **DIVISION 05 – METALS**

05 12 00 Structural Steel

## **DIVISION 07 - THERMAL AND MOISTURE PROTECTION**

07 21 00 Thermal Insulation

07 54 23 Thermoplastic Polyolefin (Tpo) Roofing

07 62 00 Sheet Metal Flashing and Trim

07 92 00 Joint Sealants

## **DIVISION 08 – OPENINGS**

08 11 13 Hollow Metal Doors and Frames

08 14 16 Flush Wood Doors

08 33 00 Overhead Coiling Doors

08 51 13 Aluminum Windows

08 62 00 Plastic Glazed Unit Skylights

08 62 50 Tubular Skylights

08 71 00 Door Hardware

## **DIVISION 09 – FINISHES**

09 29 00	Gypsum Board
09 30 00	Ceramic Tile
09 91 13	Exterior Painting
09 91 23	Interior Painting

**DIVISION 10 – SPECIALTIES**

10 44 00	Fire Protection Specialties
10 44 40	Dock Shelter Equipment

**DIVISION 11 – EQUIPMENT**

11 05 80	Dock Levelling Equipment
----------	--------------------------

PART 1 GENERAL

1.1 RELATED DOCUMENTS

- A. Drawings and general provisions of the Contract, including General and Supplementary Conditions and Division 01 Specification Sections, apply to this Section.

1.2 SECTION INCLUDES

- A. Non-Insulated Overhead Coiling Service Doors

1.3 REFERENCES

- A. ASTM A480/A480M-04; 2004 - Standard Specification for Flat-Rolled Stainless and Heat-Resisting Steel Plate, Sheet, and Strip.
- B. ASTM A653/A653M-03; 2003 - Standard Specification for Specification for Steel Sheet, Zinc-Coated (Galvanized) or Zinc-Iron Alloy-Coated (Galvannealed) by the Hot-Dip Process.

1.4 SUBMITTALS

- A. Submit under provisions of Section 01 30 00 - Administrative Requirements.
- B. Product Data: For each type and size of overhead coiling door and accessory.
  - 1. Include construction details, material descriptions, dimensions of individual components, profiles for slats, and finishes.
  - 2. Include rated capacities, operating characteristics, electrical characteristics, and furnished accessories.
  - 3. Include description of automatic closing device and testing and resetting instructions.
- C. Samples for Initial Selection: Upon request, provide manufacturer's finish charts showing full range of colors and textures available for units with factory applied finishes.
  - 1. Include similar samples of accessories involving color selection
- I. Closeout Submittals:
  - 1. Operation and maintenance data.

1.6 QUALITY ASSURANCE

- A. Installer Qualifications: Installer shall be authorized and qualified to install overhead door systems on the type and scope of project specified.
  - 1. Maintenance Proximity: Not more than [insert number] hours normal travel time from installers place of business to project site.

1.7 DELIVERY, STORAGE, AND HANDLING

- A. Store products in manufacturer's unopened packaging until ready for installation.
- B. Store and dispose of all materials in accordance with federal, state and local laws.

1.8 PROJECT CONDITIONS

- A. Maintain environmental conditions (temperature, humidity and ventilation) within limits

recommended by manufacturer for optimum results. Do not install products under environmental conditions outside manufacturer's absolute limits.

1.9 COORDINATION

- A. Coordinate with other operations and installation of adjacent materials to avoid damage to installed materials.

1.10 WARRANTY

- A. Warranty: Manufacturer's warranty that all parts and components are to be free from defects in materials and workmanship for 1 year.
- B. Warranty: Manufacturer's warranty that all parts and components, except counterbalance spring and finish, are to be free from defects in materials and workmanship for 5 years. Counterbalance springs to be warrantied for 1 year.

PART 2 PRODUCTS

2.1 MANUFACTURERS

- A. Acceptable Manufacturer: C.H.I. Overhead Doors, which is located at: 1485 Sunrise Dr. ; Arthur, IL 61911; Toll Free Tel: 800-590-0559; Fax: 217-543-4454; Email: [AIA@chiohd.com](mailto:AIA@chiohd.com); Web: [www.chiohd.com](http://www.chiohd.com).
- B. Substitutions: Equal products will be considered. Acceptable manufacturers incline Cloplay, Dayton, Overhead Door Inc.

2.2 PERFORMANCE REQUIREMENTS

- A. Non-Insulated Overhead Coiling Service Doors
  - 1. Wind Loads: Design door assembly to withstand a minimum of 20 psf in accordance with ASTM E330 using a 1.0 factor of safety.
  - 2. Windborne-Debris Impact Resistance: Design door assembly to pass missile impact and cyclic pressure tests in accordance with ANSI/ DASHA 108 and/or ANSI/DASHA 115 and to withstand wind load pressures indicated.
- B. Source Limitations: Provide overhead coiling doors from one manufacturer for each type of door. Provide operators and other accessories from source acceptable to overhead coiling door manufacturer.

2.3 MATERIALS

- A. Galvanized Steel Sheet:
  - 1. Galvanized commercial steel, (CS type) per ASTM A653/A653M, G90 and G60 coating class.

2.4 DOOR ASSEMBLY

- A. Non-Insulated Overhead Coiling Service Doors

## SECTION 08330 – OVERHEAD COILING DOORS

1. Basis of Design: C.H.I. Overhead Doors model 6200
2. Construction:
  - a. Curtain: Constructed from interlocking slats formed from the following.
    - 1) Material:
      - a) 20 gauge galvanized steel.
        - i) Finish: Hot-dipped galvanized in accordance with ASTM A653 and with baked on enamel primer coat and polyester finish coat.
          - a. Polyester Finish
          - b. Powder Coat: Submit standard color char
    - 2) Profile:
      - a) Curved, non-insulated, 2-5/8 inches high by 7/8 inch deep.
    - 3) End locks: Galvanized malleable iron, attached to every other slat to act as wearing surface and prevent lateral movement.
    - 4) Wind locks: Per design and wind load requirements
    - 5) Bottom bar:
      - a) Two steel angles bolted back-to-back, with adjustable tubular compression weather seal.
        - i) Bottom Bar Finish:
          - a. Painted Black
          - b. Hot Dipped Galvanized
          - c. Cold Galvanizing
          - d. Powder Coat [RAL#     ] [to match curtain]
    - 6) Vision Lites: Provide rectangular lites, approximately 5 inches wide by 1-1/8 inch high, spaced 7 inches on center, and with clear acrylic glazing.
  - b. Guides: Structural angles bolted together to form guide and mounting surface.
    - 1) Guide Material:
      - a) Steel
        - i) Guide Finish:
          - a. Painted Black
          - b. Hot Dipped Galvanized
          - c. Cold Galvanizing
          - d. Powder Coat [RAL#     ] [to match curtain]
      - b) Stainless Steel
        - i) Guide Finish:
          - a. Mill finish
      - c) Aluminum with steel wall angle [and pack out angle]
        - i) Guide Finish:
          - a. Mill Finish Aluminum
          - b. Painted Black Steel
          - c. Hot Dipped Galvanized Steel
          - d. Cold Galvanizing Steel
          - e. Powder Coat [RAL#     ] [to match curtain]

## SECTION 08330 – OVERHEAD COILING DOORS

- c. Head Plate: Rectangular steel plate, with precision sealed ball bearings supporting drive side axle.
  - d. Barrel Assembly: Steel pipe sized for maximum deflection under full load not to exceed 0.03” per foot of span with threaded rings or lugs welded to barrel assembly for curtain attachment.
  - e. Springs: Spring tension assembly supported within barrel by precision ball bearings. Curtain weight counterbalanced by oil tempered, helically wound torsion springs; grease packed and mounted on steel torsion shafts with cast spring plug
    - 1) Designed for minimum 50,000 cycles.
  - f. Hood: Shaped to fit within the head plates and with intermediate supports as required.
    - 1) Hood Material:
      - a) Minimum 24 gauge galvanized steel
        - i) Hood finish:
          - a. Match curtain finish
          - b. Polyester Finish: [Gray], [White], [Tan], [Brown], [Galvanized]
          - c. Powder Coat: [RAL#     ] [to match curtain]
      - b) Minimum 20 gauge (.032) Aluminum.
        - i) Hood finish:
          - a. Clear Anodized.
  - g. Weather Seal:
    - 1) Tubular vinyl bottom seal.
    - 2) Vinyl guide seal with rubber hood baffle.
    - 3) Guide brush seal.
    - 4) Header brush seal.
  - h. Locking Mechanism:
    - 1) Two plated steel slide bolt locks with padlock provisions.
    - 2) Chain keeper suitable for padlocking.
    - 3) Cylinder lock mounted to double angle bottom bar.
      - a) Keyed on exterior of door with thumb turn on interior.
      - b) Keyed on both sides of the door.
    - 4) Extruded aluminum tube type bottom bar with cylinder locking.
      - a) Keyed on exterior of door with handle throw on interior.
      - b) Keyed on both sides of the door.
    - 5) Interlock Switches: Equip power-operated doors with safety interlock switch to disengage power supply when door is locked.
3. Mounting:
- a. Face of wall and above lintel.
4. Electric Motor Operator: Provide operator unit, UL listed and UL labeled, size as recommended by manufacturer, capable of driving door at a speed of no less than 8 inches per second nor more than 12 inches per second.



- a. Usage Classification
    - 1) Heavy duty; 25 or more cycles per hour and over 90 cycles per day.
    - 2) Standard duty; up to 25 cycles per hour and up to 90 cycles per day.
    - 3) Medium duty; up to 12 cycles per hour and up to 50 cycles per day.
    - 4) Light duty; up to 10 cycles per hour.
  - b. Operator Location:
    - 1) Mounted on front of hood.
    - 2) Wall mounted.
    - 3) Mounted on opposite side of the wall with connection through wall.
  - c. Operator Exposure:
    - 1) Interior.
    - 2) Exterior; wet and humid.
      - a) Provide operator cover to protect operator from weather.
        - i) Operator cover to match hood.
        - ii) Operator cover to be galvanized finish.
  - d. Power Supply:
    - 1) 208/230 VAC, three phase
  - e. Control Station:
    - 1) 24 V three button control station with open, close, and stop buttons and keyed lockout.
  - f. Primary Entrapment Protection Devices
    - 1) NEMA 1 Monitored Photo Sensors: Photo eyes fully monitored, non-contact, infrared beam photo sensor system shall reverse a closing door to the full open position when an obstruction is sensed; photo sensors shall be mounted no higher than 6 inches (152 mm) maximum above the floor.
5. Wind load: Design door assembly to withstand a minimum of 20 psf in accordance with ASTM E330 using a 1.0 factor of safety.

## PART 2 EXECUTION

### 2.1 EXAMINATION

- A. Examine substrates, areas, and conditions for compliance with requirements for substrate construction and other conditions affecting performance of the work.
- B. Examine locations of electrical connections.
- C. Proceed with installation only after all unsatisfactory conditions have been corrected.

### 2.2 INSTALLATION

- A. Install in accordance with manufacturer's instructions.
- B. Anchor to adjacent construction without distortion or stress.
- C. Fit and align door and shutter assembly including hardware, plumb, level and square to ensure smooth operation.

## SECTION 08330 – OVERHEAD COILING DOORS

- D. Complete wiring from operator to controls and components.
- E. Coordinate installation of electrical service from power supply to operator.
- F. Complete wiring from operator to controls and components.
- G. Coordinate installation of electrical service from power supply to operator.

### 2.3 ADJUSTING

- A. Adjust hardware and moving parts so that doors operate smoothly throughout full operating range.
- B. Adjust seals to provide a tight fit around the entire perimeter.

### 2.4 MAINTENANCE SERVICE

- A. Initial Maintenance Service: Beginning at Substantial Completion, maintenance service shall include [three] [six] [nine] [twelve] months full maintenance by skilled employees of installing company. Include [monthly] [quarterly] preventive maintenance, repair or replace of worn or defective components, lubrication, cleaning, and adjusting as required for door operation. Parts and supplies shall be manufacturer's authorized replacement parts and supplies.
  - 1. Perform maintenance, including emergency callback service, during normal working hours.
  - 2. Include 24 hour per day, seven days per week, emergency callback service.

### 3.5 DEMONSTRATION

- A. Demonstrate proper operation to Owner.
- B. Perform fire door and shutter drop tests in presence of Owner or owner's representative. Require signature for manufacturer supplied drop test form.

END OF SECTION

# DELAWARE COUNTY WAREHOUSE SHARE FOOD PROGRAM, INC.

101 AMOSLAND ROAD HOLMES, PA 19043

## BUILDING CODE SUMMARY

ALL WORK IS DESIGNED TO COMPLY WITH THE FOLLOWING:

- PENNSYLVANIA UNIFORM CONSTRUCTION CODE; (IBC 2018 WITH AMENDMENTS)
- 2018 IEBC 2018 IECC
- IBC 2018 CHAPTER 11 ACCESSIBILITY AND APPENDIX "E" SUPPLEMENTARY ACCESSIBILITY REQUIREMENTS
- ICC A117.1 2017 AS REFERENCED BY IBC 2018 CHAPTER 11

EXISTING BUILDING DESCRIPTION: ONE STORY MASONRY BUILDING WITH EXPOSED STEEL STRUCTURE AND EXTERIOR MASONRY WALLS

SPRINKERED: NO

CONSTRUCTION TYPE: "2B" USE GROUP "S-1 & B"

### ALLOWABLE HEIGHT AND AREA:

	AREA MAX	HEIGHT IN FEET	HEIGHT IN STORIES
S-1	26,000 SF	55'	THREE STORIES
B	23,000 SF	55'	THREE STORIES

### ACTUAL HEIGHT AND AREA:

9,000 SF B AND S-1 UNSEPARATED, ONE STORY :: OK

NOTE: NO OCCUPANCY SEPARATION REQUIRED BETWEEN USE GROUPS S-1 AND B PER TABLE 504.8.

### OCCUPANT LOAD:

B OCCUPANCY (OFFICE) 1,336 SF/150 = 9 OCCUPANTS

S-1 OCCUPANCY 7,361 / 500 = 15 OCCUPANTS

24 OCCUPANTS TOTAL

EXITS REQUIRED: ONE

EXITS PROVIDED: THREE : OK

### REQUIRED PLUMBING FIXTURES

B OCCUPANCY 1 PER FIRST 25 PERSONS

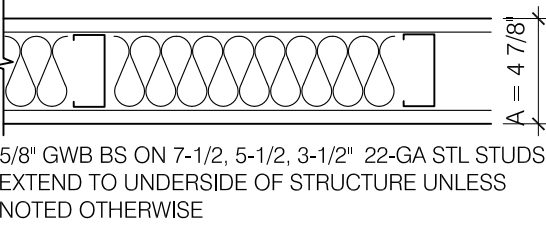
S-1 OCCUPANCY 1 PER 100 PERSONS

TOTAL REQUIRED AND PROVIDED: 2 WATER CLOSETS, TWO LAVS, 1 DRINKING FOUNTAIN AND ONE MOP SINK.

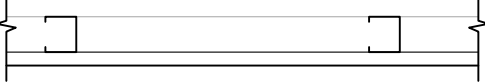
ACCESSIBILITY: ACCESSIBLE ROUTE PROVIDED FROM PARKING LOT INTO AND OFFICE AREA. ACCESSIBLE RESTROOMS AND DRINKING FOUNTAINS REQUIRED AND PROVIDED.

## PARTITION SCHEDULE

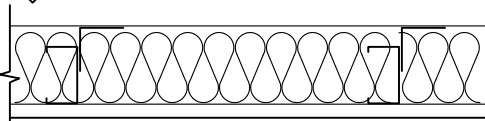
**A** TYPICAL DRYWALL PARTITION EXTEND PARTITIONS TO UNDERSIDE OF STRUCTURE



**B** FURRING AT INTERIOR WALL

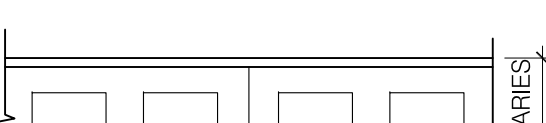


**C** FURRING AT EXTERIOR WALL



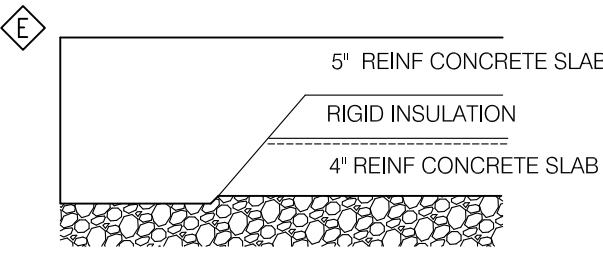
5/8" GWB ON 2 1/2" 22 GA STL STUDS, WITH R-15 BATT INS; BRACE STUDS TO WALL AT MID HEIGHT

**D** EXISTING RATED MASONRY WALL



EXISTING MASONRY WALL: 4" THICK OR GREATER FOR TWO HOUR WALL, PER TABLE 720.1(2)

## HORIZONTAL ASSEMBLIES



SLAB BENEATH FREEZER - 4" REINF CONCRETE SLAB ON 3" RIGID INSULATION ON 6 MIL POLYETHYLENE 4" REINFORCED SLAB ON 2" GRAVEL ON COMPACTED FILL; THICKEN SLAB AT PERIMETER; INSTALL SLAB FLUSH WITH ADJACENT CONCRETE FLOOR

## DRAWING LIST

### 01 - ARCHITECTURAL

- C-0 COVER SHEET
- D-1 SELECTIVE DEMOLITION PLANS
- A-1 FLOOR PLAN & DETAILS
- A-2 EXTERIOR ELEVATIONS
- A-3 REFLECTED CEILING, ROOF PLAN, & DETAILS

### 02 - STRUCTURAL

- S1 FOUNDATION PLAN
- S2 ROOF FRAMING PLAN

### 03 - MECHANICAL

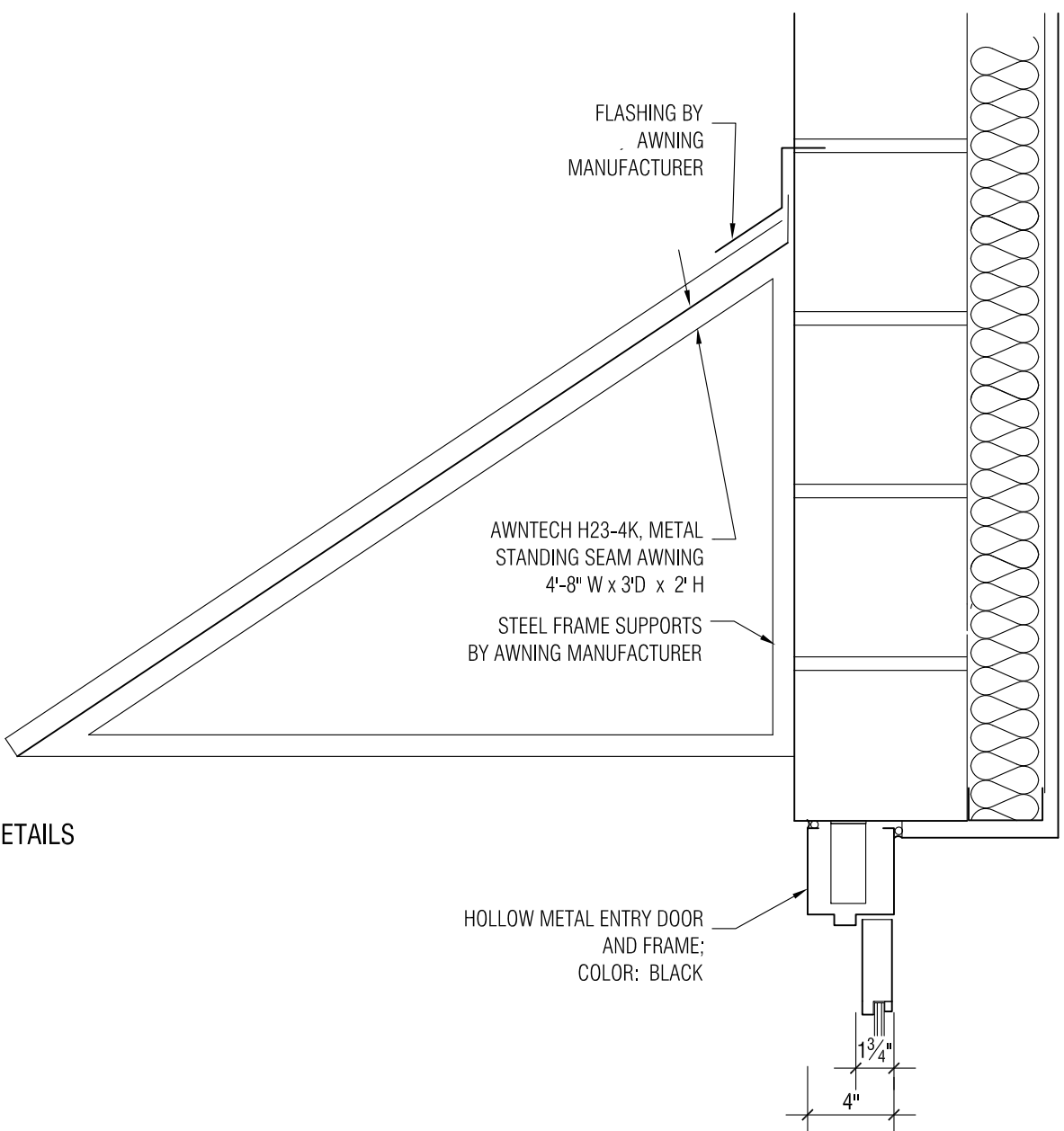
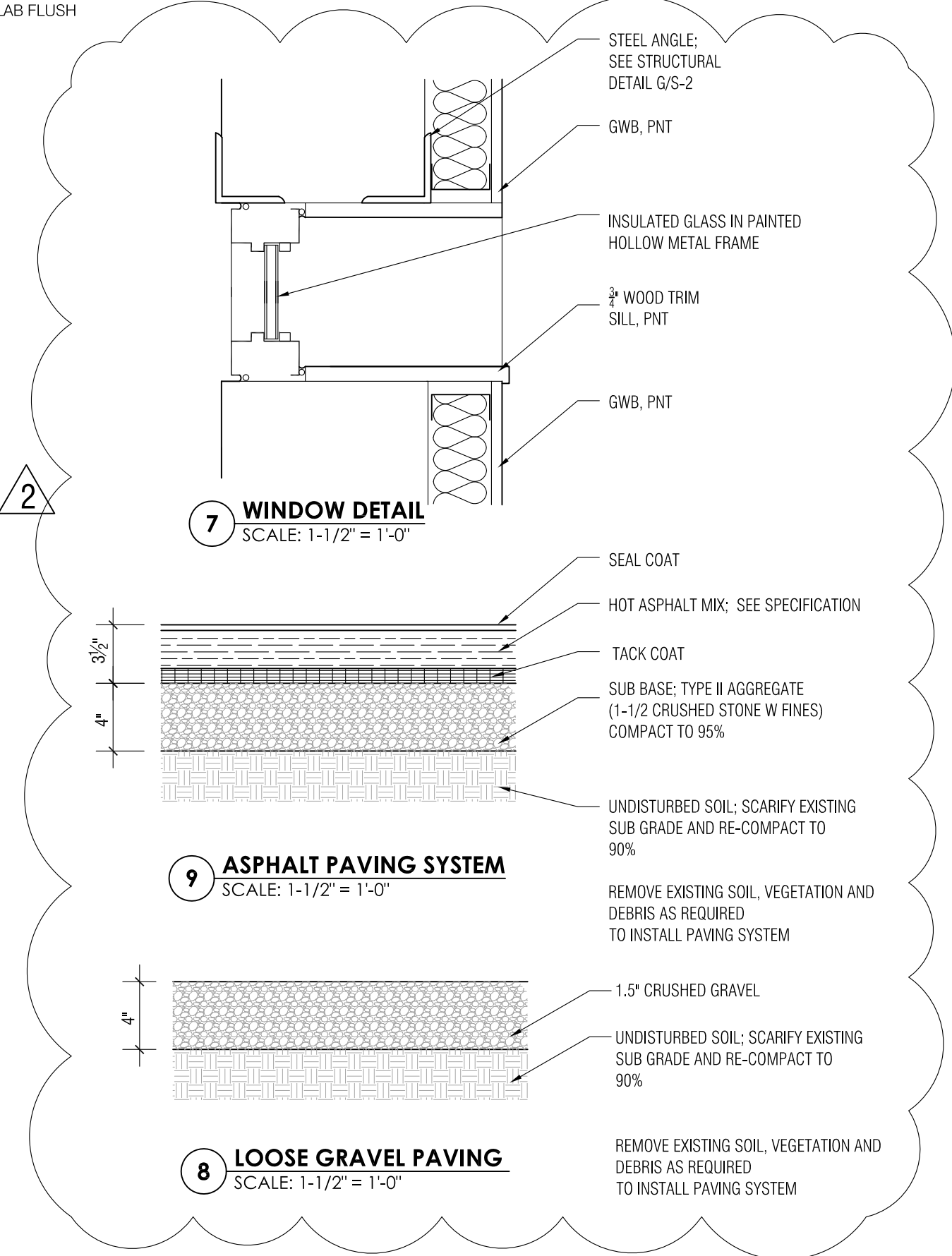
- H-0 HVAC COVER SHEET
- H-1 HVAC DEMOLITION PLAN- GROUND FLOOR
- H-2 HVAC DEMOLITION PLAN - ROOF
- H-3 HVAC NEW WORK PLAN - GROUND FLOOR
- H-4 HVAC NEW WORK PLAN - ROOF
- H-7 HVAC SCHEDULES
- H-9 HVAC DETAILS

### 04 - ELECTRICAL AND FIRE PROTECTION

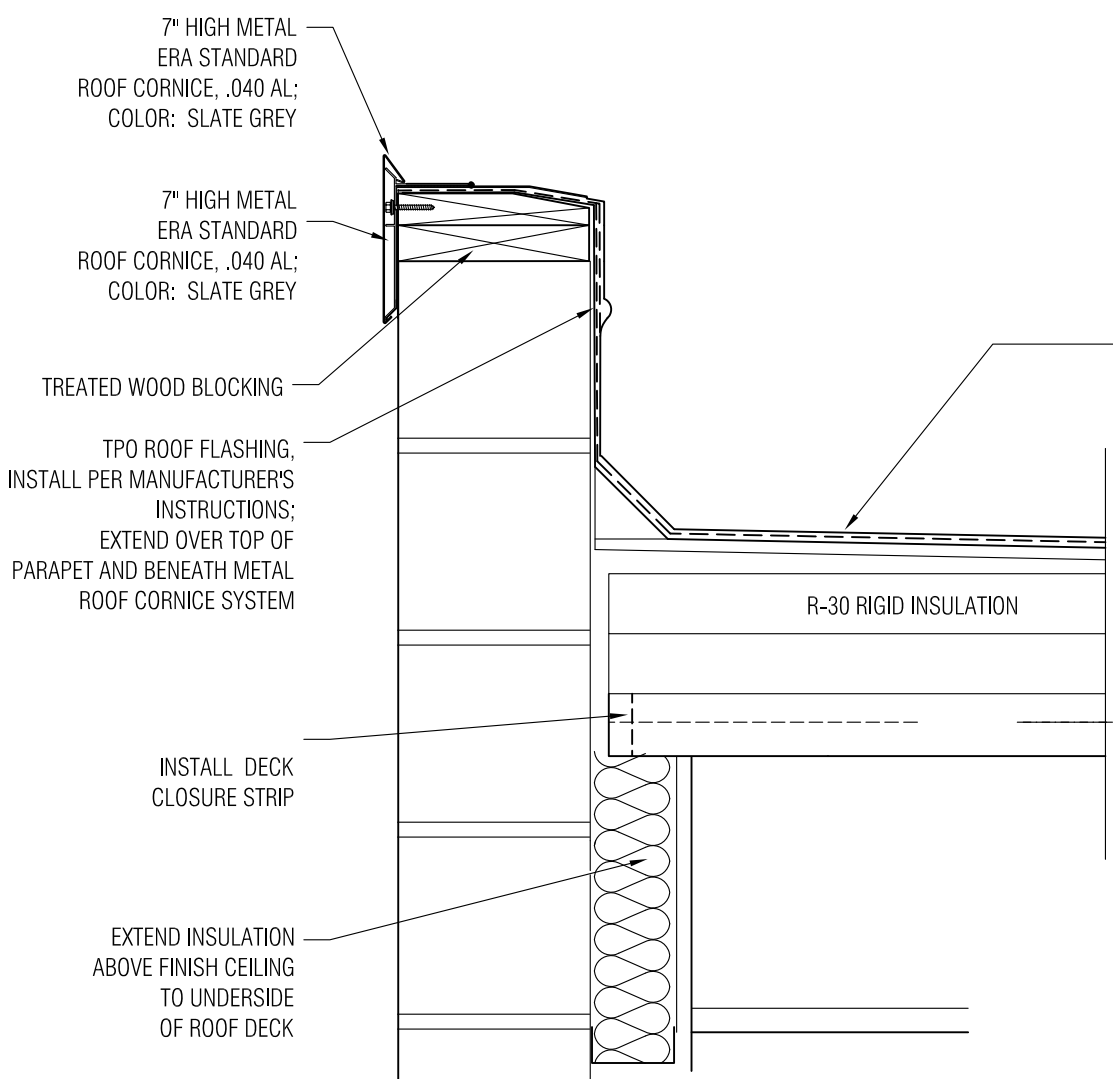
- E-0 ELECTRICAL COVER SHEET
- E-2 ELECTRICAL GROUND FLOOR DEMOLITION PLANS
- E-4 ELECTRICAL GROUND FLOOR NEW WORK PLANS
- E-5 ELECTRICAL ROOF NEW WORK POWER PLAN
- E-6 ELECTRICAL SINGLE LINE DIAGRAMS
- E-7 ELECTRICAL FIRE ALARM RISER DIAGRAM & CUT SHEETS
- E-8 LIGHTING FIXTURE AND CONTROL SCHEDULES
- E-9 ELECTRICAL SCHEDULES

### 05 - PLUMBING

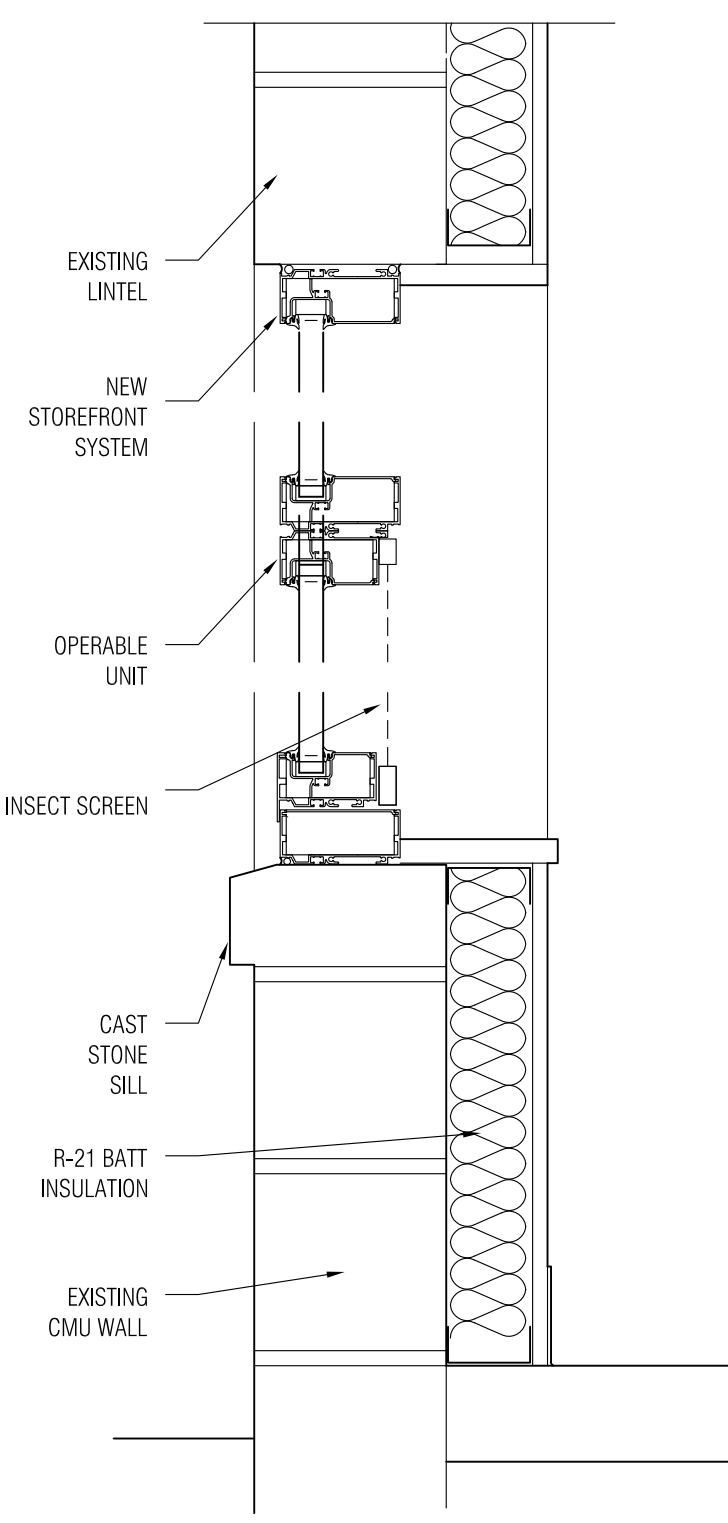
- P-0 PLUMBING COVER SHEET
- P-1 PLUMBING DEMOLITION PLAN - GROUND FLOOR
- P-2 PLUMBING NEW WORK PLAN - GROUND FLOOR- SANITARY
- P-3 PLUMBING NEW WORK PLAN - GROUND FLOOR - DOMESTIC
- P-9 PLUMBING SCHEDULES AND DETAILS



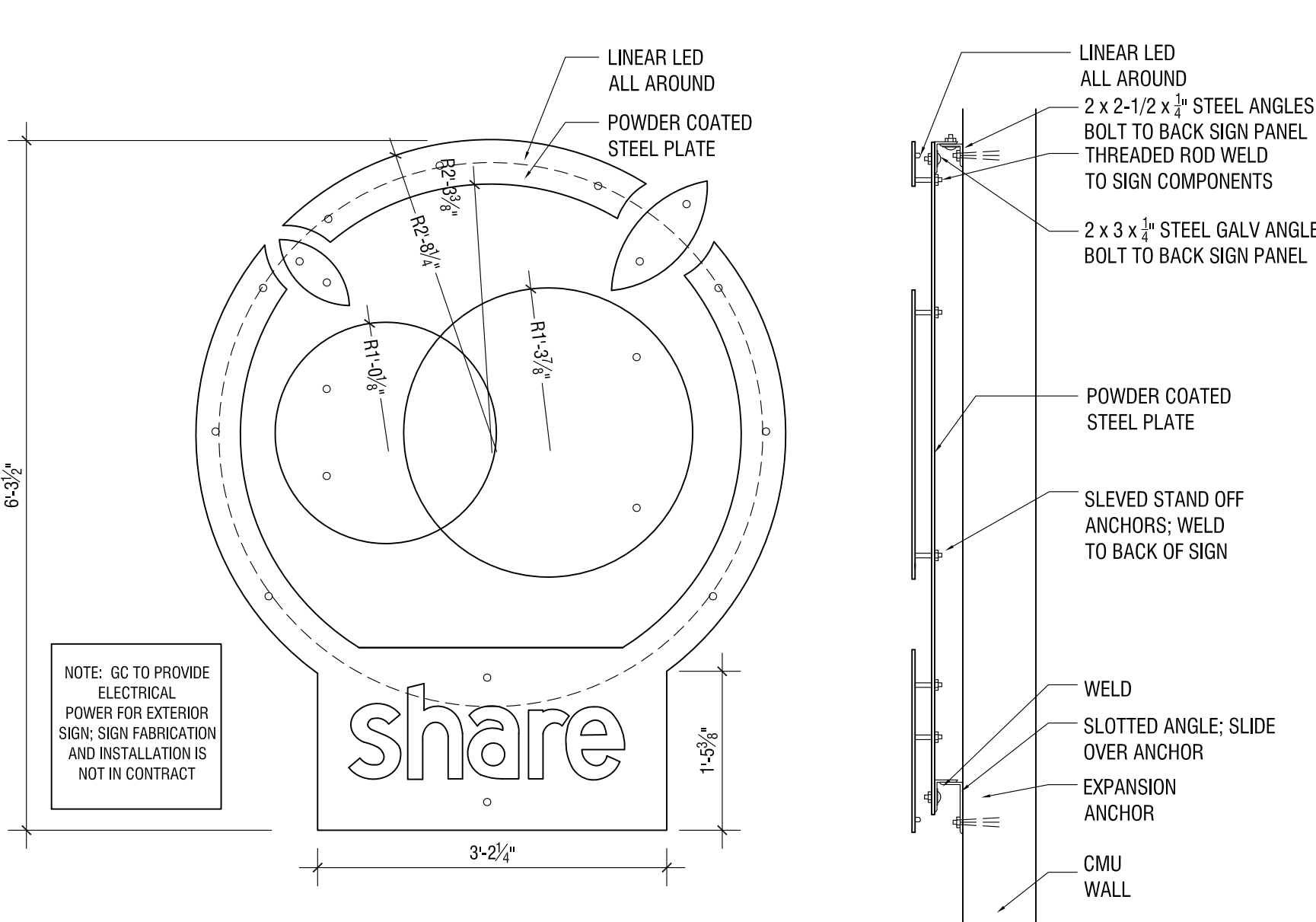
**5** SECTION AT AWNING  
SCALE: 1-1/2" = 1'-0"



**6** PARAPET DETAIL  
SCALE: 1-1/2" = 1'-0"

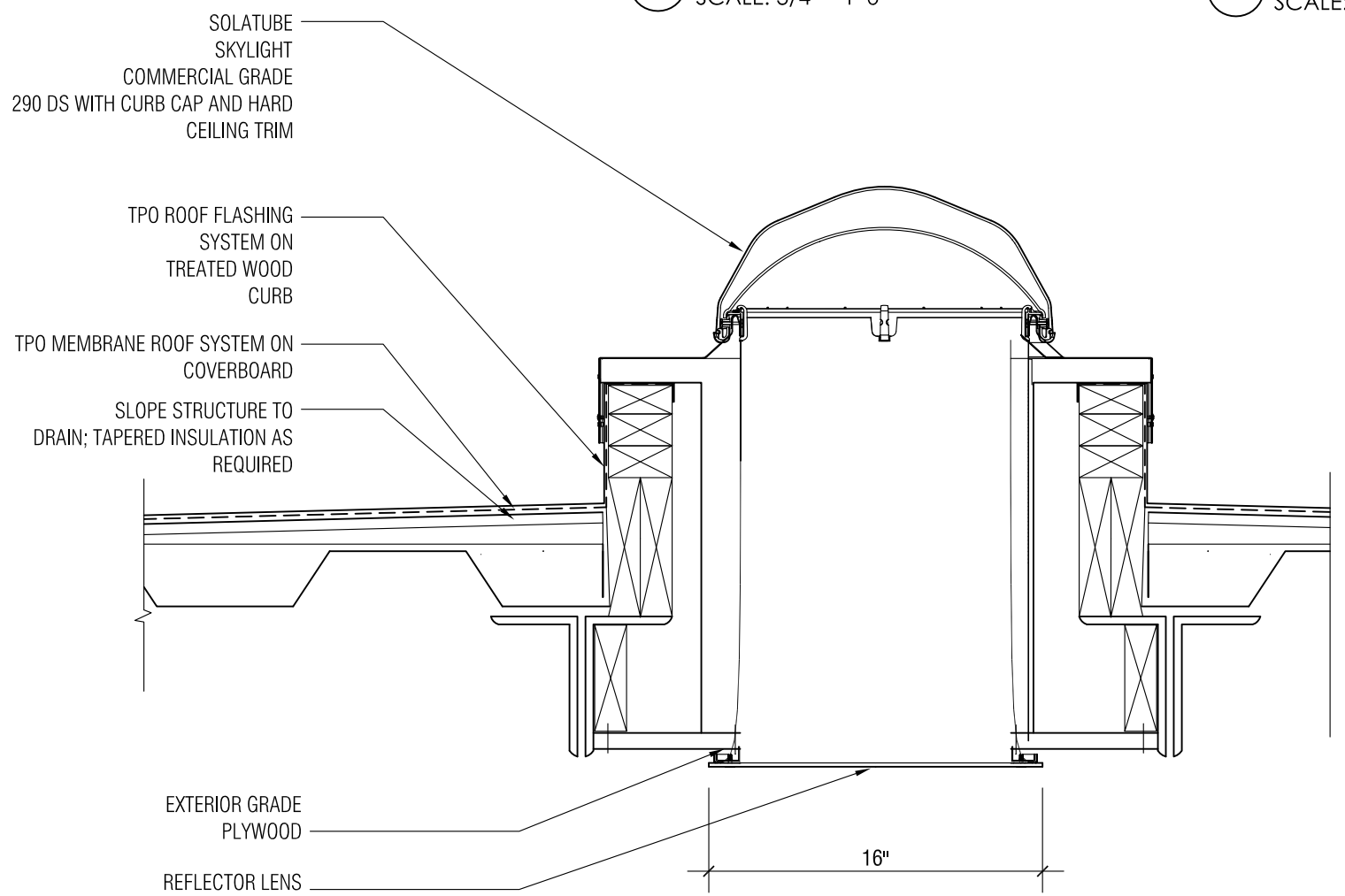


**7** WINDOW DETAIL  
SCALE: 1-1/2" = 1'-0"

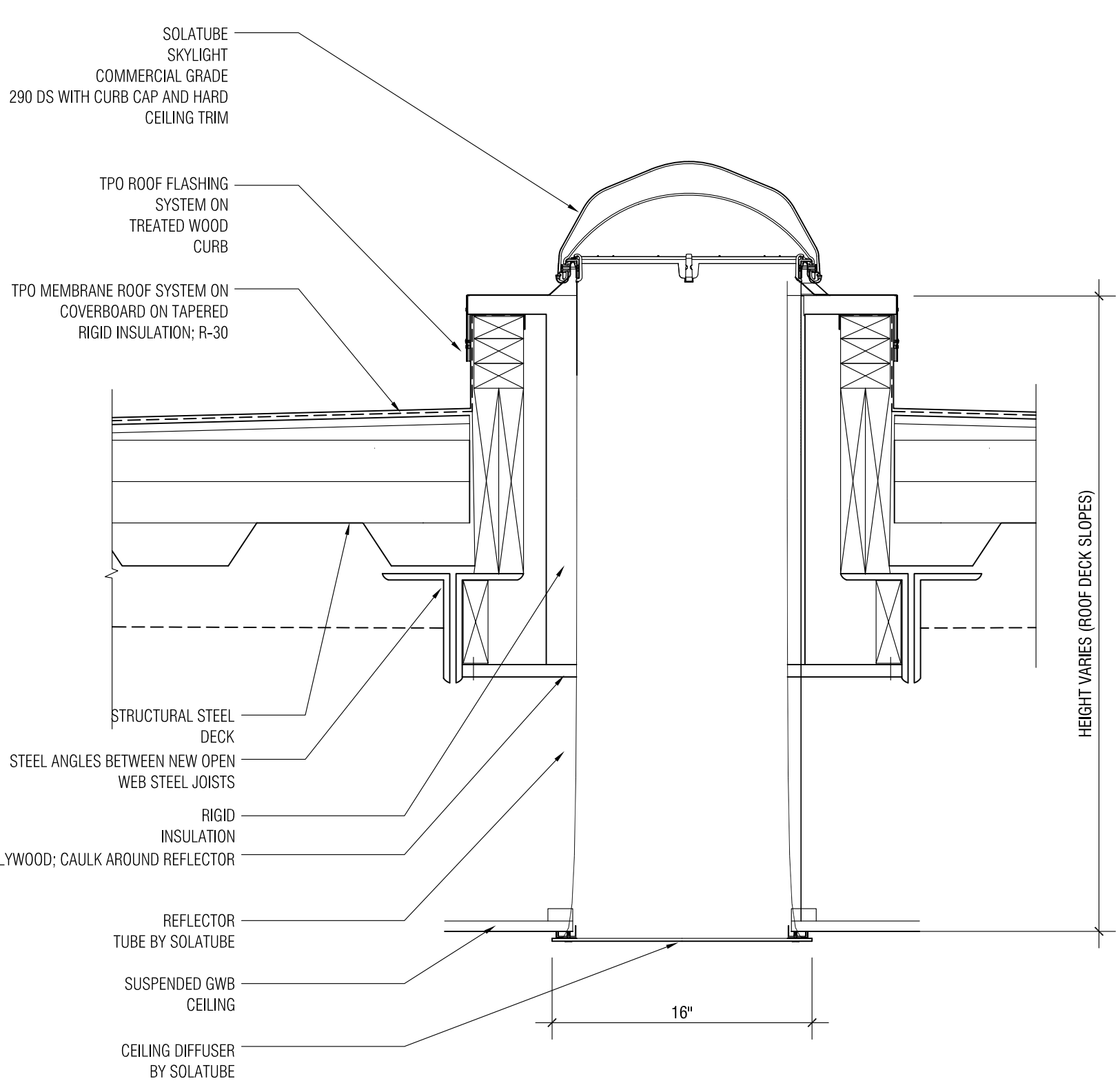


**1** FLATWALL SIGN  
SCALE: 3/4" = 1'-0"

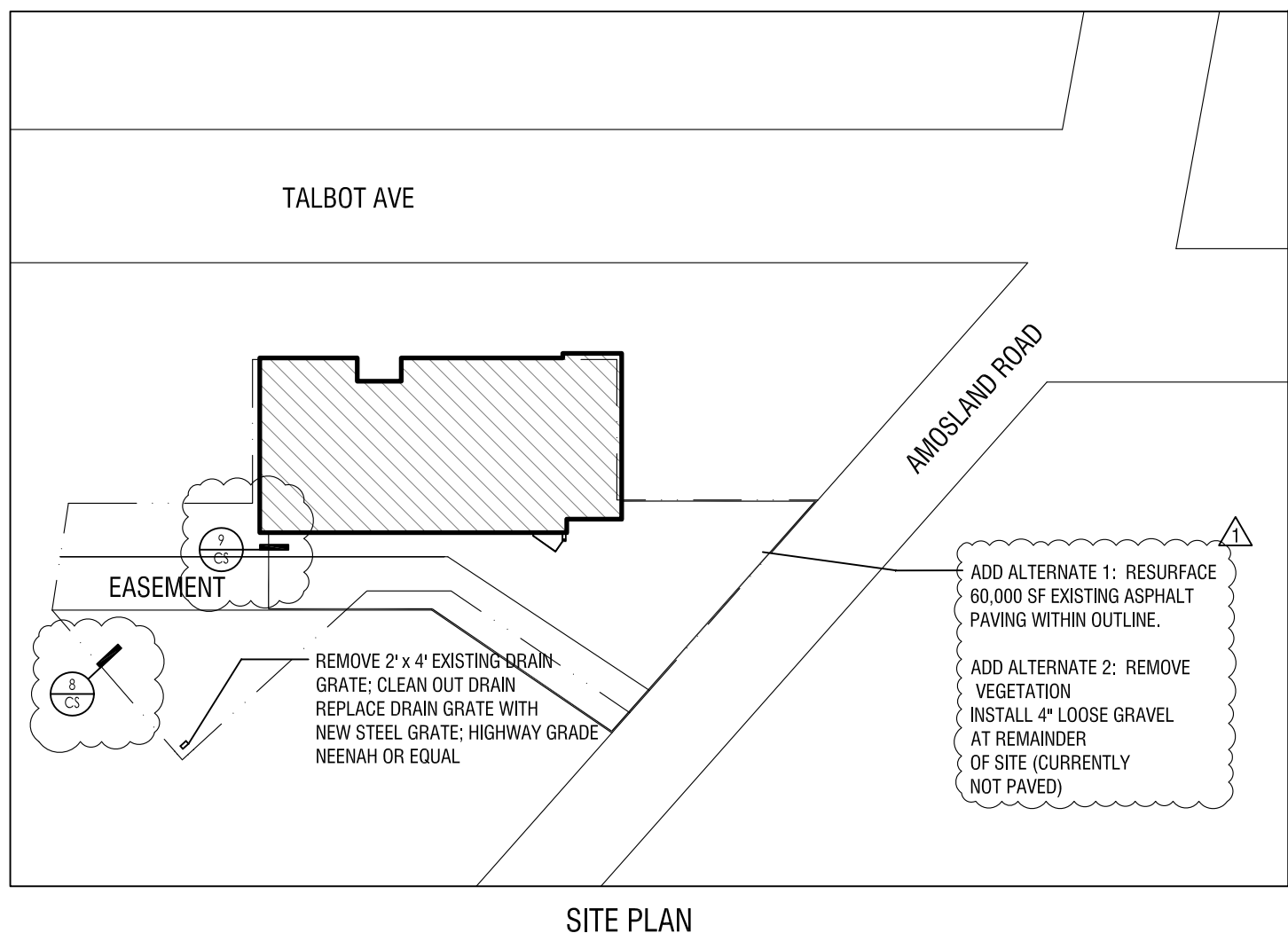
**2** SECTION THROUGH SIGN  
SCALE: 3/4" = 1'-0"



**3** SECTION THROUGH SOLATUBE SKYLIGHT  
SCALE: 1-1/2" = 1'-0"



**4** SECTION THROUGH SOLATUBE SKYLIGHT  
SCALE: 1-1/2" = 1'-0"



SITE PLAN



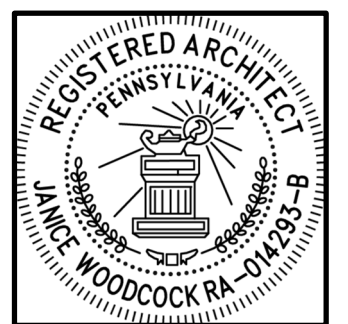
WOODCOCK DESIGN

ARCHITECT  
1518 WALNUT ST. STE 1308  
PHILADELPHIA, PA 19102  
+1 267 738 0956  
WOODCOCK-DESIGN.COM

MEP ENGINEER  
CHESTNUT ENGINEERING  
2 E. LANCASTER PIKE  
SUITE F-2  
ARDMORE, PA 19003

STRUCTURAL ENGINEER  
BEVAN LAWSON, PE  
2200 ARCH STREET  
PHILADELPHIA, PA 19103

SHARE FOOD  
PROGRAM  
DELAWARE COUNTY  
WAREHOUSE  
101 AMOSLAND ROAD  
HOLMES, PA  
19043



JANICE WOODCOCK, AIA  
RA-014293-B  
PHILA BPL: 154698

NO.	REVISION	DATE
1	ADD 1	11/15/2022
2	ADD 2	11/21/2022

SHEET NAME:

COVER SHEET

DATE: 11/27/2022 BID SET

C-0





PHOTO 1- GANTRY CRANE



PHOTO 2- ELECTRICAL PANEL



PHOTO 3- OVERHEAD EQUIPMENT



PHOTO 4 STEEL BEAM ATTACHED TO BUILDING



PHOTO 5- MASONRY WALL



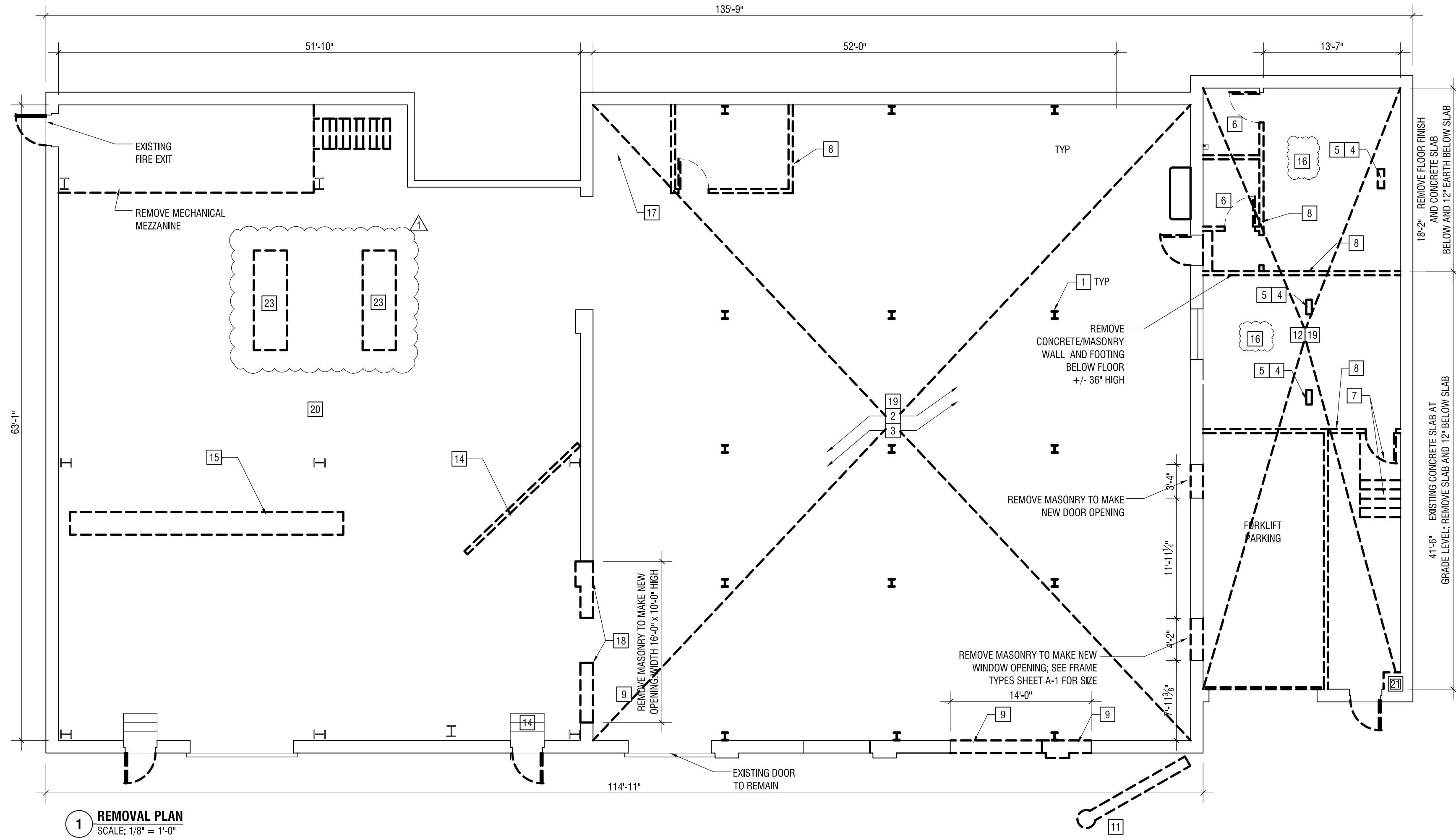
PHOTO 6- WOOD STRUCTURE



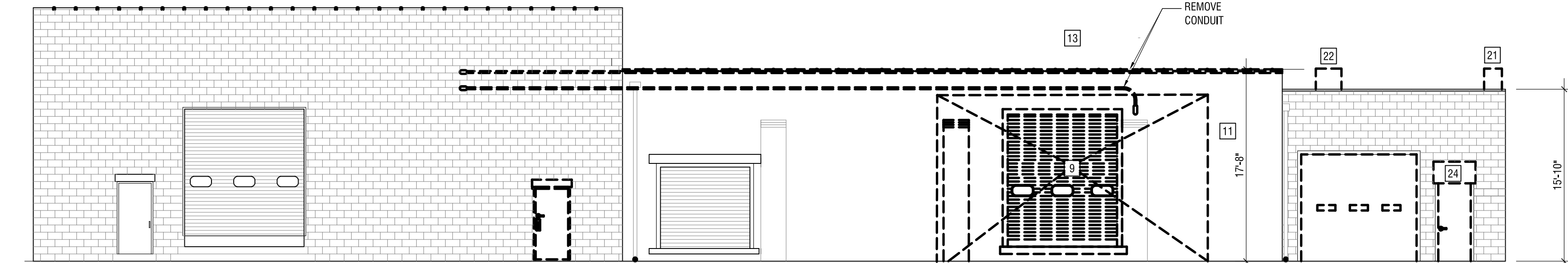
PHOTO 7- STEEL STRUCTURE



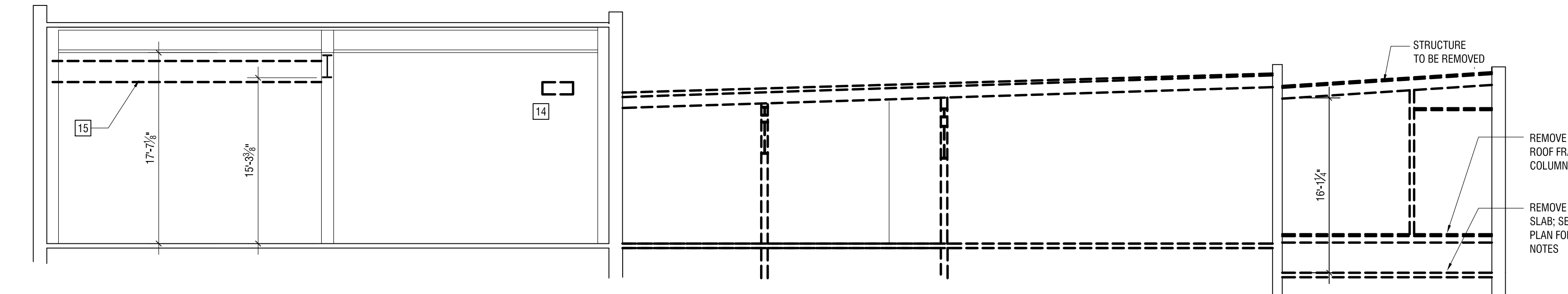
PHOTO 8- WOOD COLUMN, WALLS AND CEILINGS



1 REMOVAL PLAN  
SCALE: 1/8" = 1'-0"



3 REMOVAL ELEVATION  
SCALE: 1/8" = 1'-0"



5 REMOVAL SECTION  
SCALE: 1/8" = 1'-0"

#### REMOVALS

- STEEL COLUMNS AND FOOTINGS; SEE PHOTO 7
- ROOF STRUCTURE SEE PHOTO 7
- CONCRETE SLAB AND 12" OF SOIL BENEATH (NOTE: VERIFY THAT SLAB DOES NOT HAVE GRAVEL BELOW, WHICH WOULD BE UNSUITABLE FOR NEW SLAB; SEE PHOTO 3)
- WOOD COLUMN; SEE PHOTO 8
- CEILING, LIGHTING, FINISHES. TYP THIS AREA; SEE PHOTO 8
- PLUMBING FIXTURES (SINK AND WATER CLOSET; CAP PIPING IF NOT USED IN NEW WORK
- PLATFORM, STAIRS, AND ENTRY DOOR
- INTERIOR DRYWALL PARTITION
- SOLID MASONRY WALL; SHORE AS REQUIRED SHORING DESIGN BY CONTRACTOR; SEE PHOTO 5
- OVERHEAD EQUIPMENT SEE PHOTO 3
- STEEL BEAM , STEEL COLUMN, & CONC FOOTING; SEE PHOTO 4
- ROOF STRUCTURE SEE PHOTO 6
- COPING; REMOVE 1 COURSE BRICK AND AS REQUIRED TO EXTEND NEW MASONRY WALL
- FLOOR LEVELER
- GANTRY CRANE; SEE PHOTO 1
- WOOD FRAMED FLOOR AND STRUCTURE AS REQUIRED TO INSTALL FUTURE WORK
- REMOVE OIL TANK, HEATER AND DUCTWORK THIS AREA
- REMOVE EXISTING LINTEL, MASONRY TO MAKE NEW ENLARGED OPENING
- REMOVE MAIN ELECTRICAL SERVICE, DISCONNECTS, PANELS, WIRING, LIGHTS, AND DEVICES THIS AREA
- REMOVE ELECTRICAL FEED THIS SECTION; EXISTING PANEL AND WIRING TO REMAIN
- REMOVE CMU STACK
- REMOVE ROOF VENT
- REMOVE COVER AND DEBRIS INSIDE CONCRETE TRENCH
- REMOVE METAL AWNING



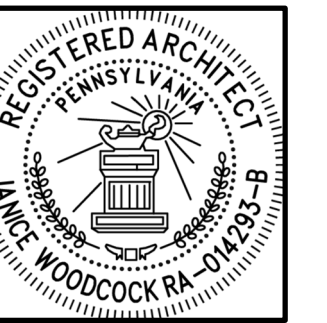
WOODCOCK DESIGN

ARCHITECT  
1518 WALNUT ST. STE 1308  
PHILADELPHIA, PA 19102  
+1 267 738 0956  
WOODCOCK-DESIGN.COM

MEP ENGINEER  
CHESTNUT ENGINEERING  
2 E. LANCASTER PIKE  
SUITE F-2  
ARDMORE, PA 19003

STRUCTURAL ENGINEER  
BEVAN LAWSON, PE  
2200 ARCH STREET  
PHILADELPHIA, PA 19103

SHARE FOOD  
PROGRAM  
DELAWARE COUNTY  
WAREHOUSE  
101 AMOSLAND ROAD  
HOLMES, PA  
19043



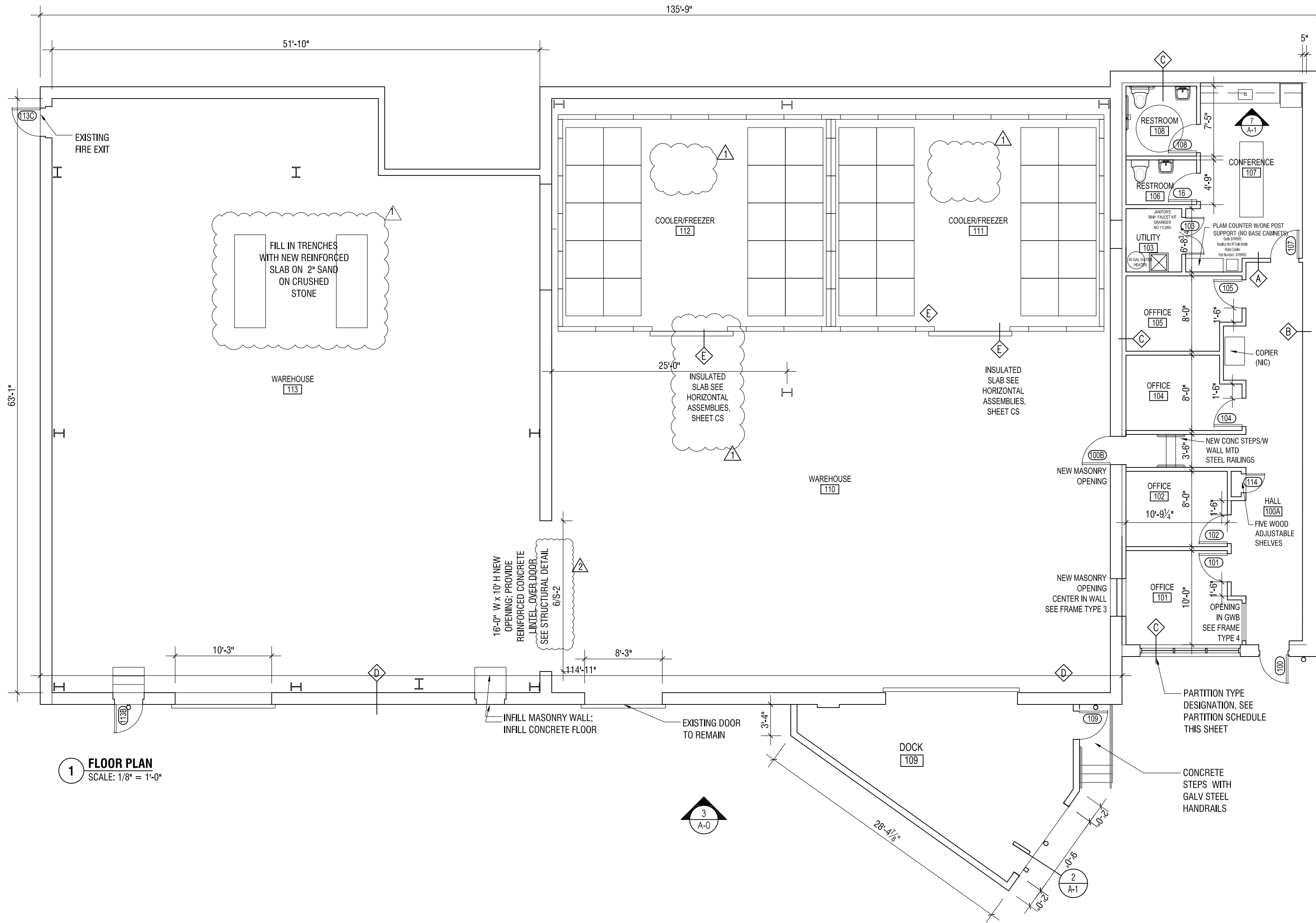
JANICE WOODCOCK, AIA  
RA-014293-B  
PHILA BPL: 154698

NO.	REVISION	DATE
1	ADD 1	11/15/2022
2	ADD 2	11/21/2022

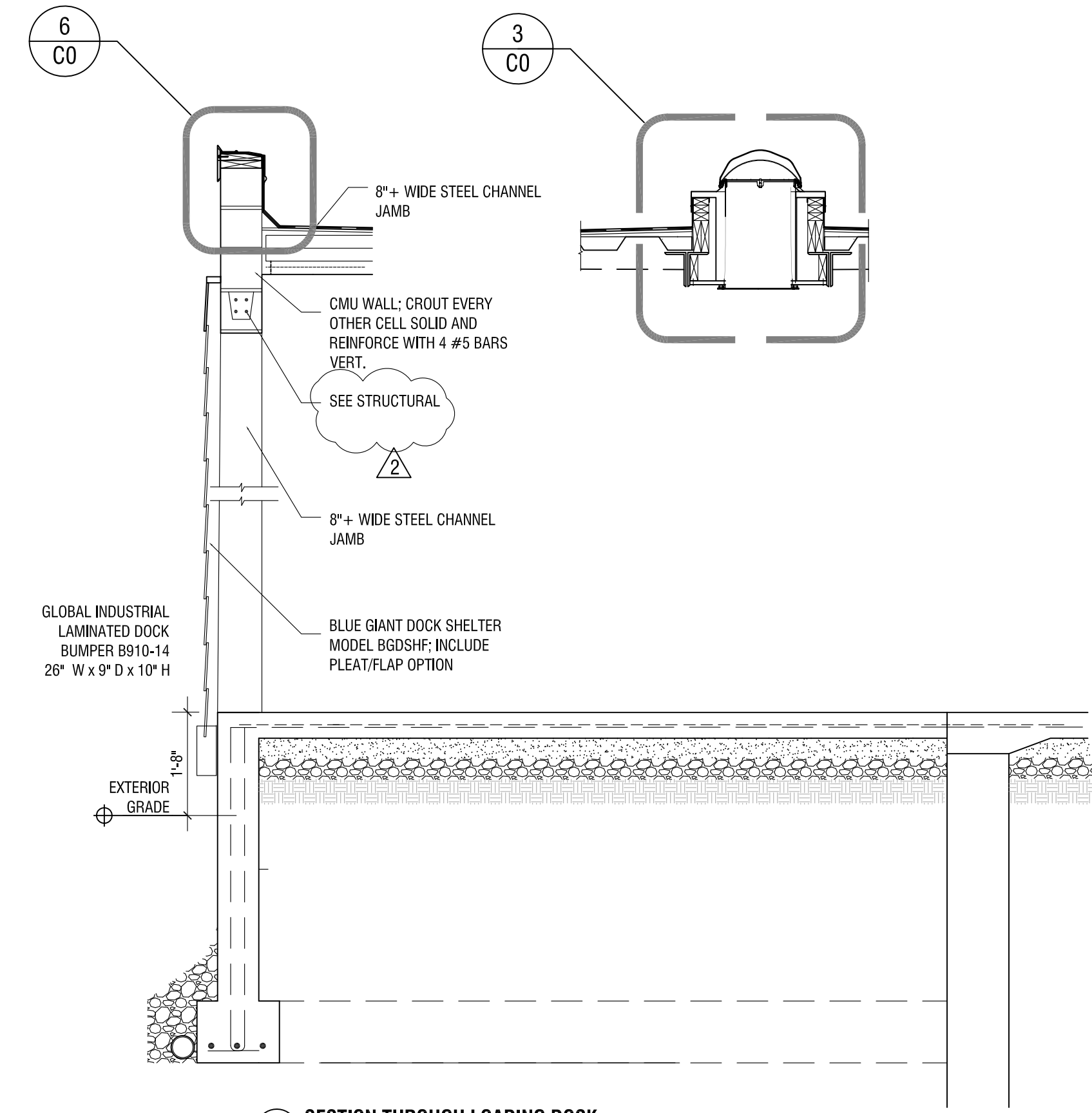
SHEET NAME:  
SELECTIVE  
DEMOLITION  
PLANS

DATE: 11/7/2022 BID SET





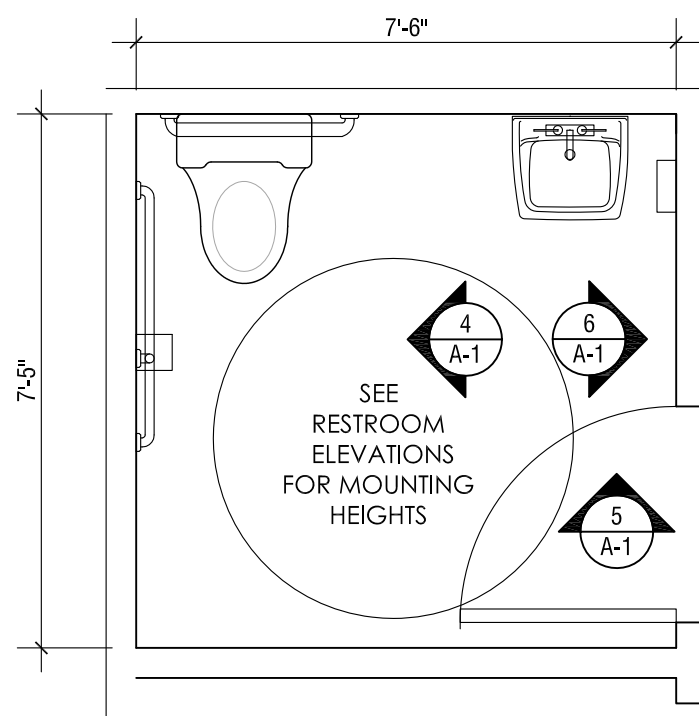
1 FLOOR PLAN  
SCALE: 1/8" = 1'-0"



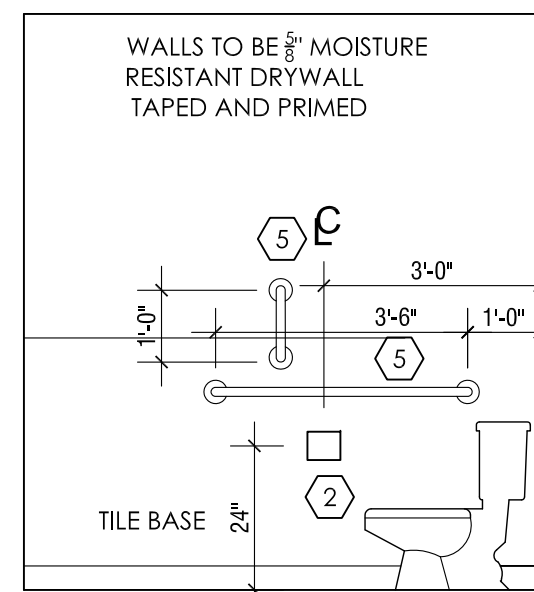
2 SECTION THROUGH LOADING DOCK  
SCALE: 1/4" = 1'-0"

#### BATHROOM ACCESSORIES SCHEDULE

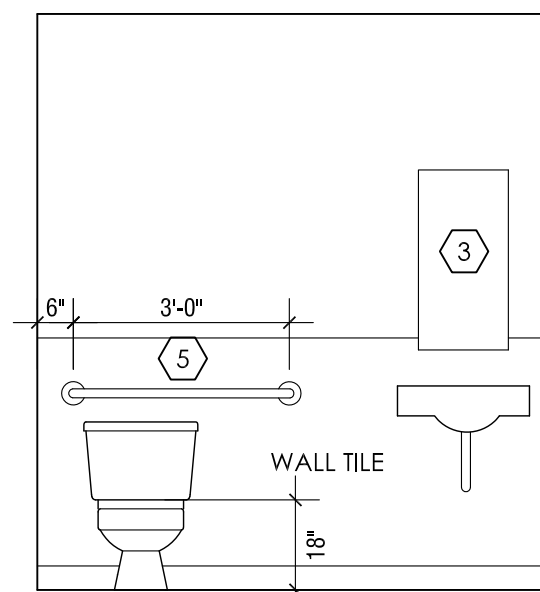
TAG	ITEM	MODEL NO	DIMENSIONS	REMARKS
1	WASTE RECEPTICLE	BOBRICK B-3644	16" WIDE x 4" DEEP x 29-1/4"	RECESSED
2	T PAPER DISPENSER	BOBRICK B-6977	SEE INTERIOR ELEVATIONS FOR LOCATION	
3	MIRROR	BOBRICK B-165 2436	24 x 36	
4	ROBE HOOK	BOBRICK B-6727	MOUNT AT 56" AFF	
5	GRAB BARS	BOBRICK -	SEE INTERIOR ELEVATIONS	
6	PAPER TOWEL DISPENSER	BOBRICK B-2620	11" W x 14" H x 4" D	SURFACE MOUNTED
7	SOAP DISPENSER	RELIABLE BRAND #LFS-12	-	1250 ML



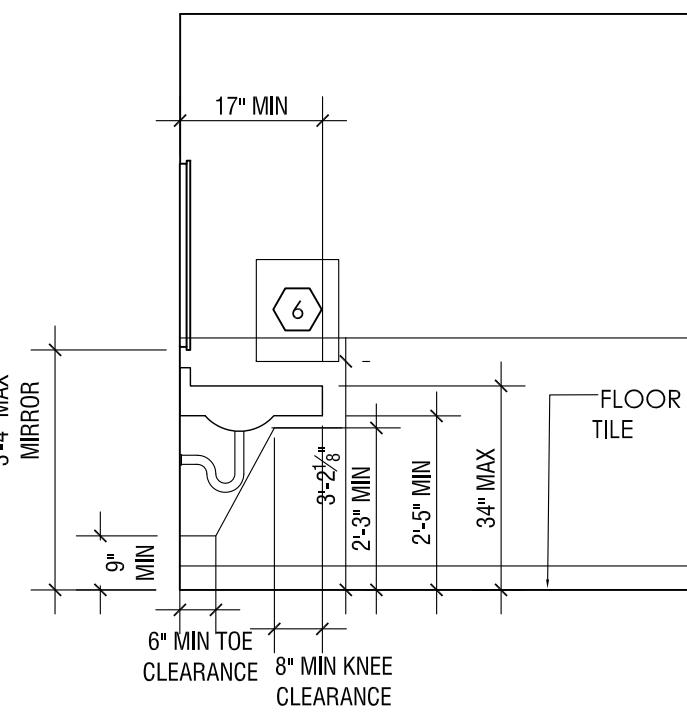
3 ENLARGED RESTROOM PLAN  
SCALE: 3/8" = 1'-0"



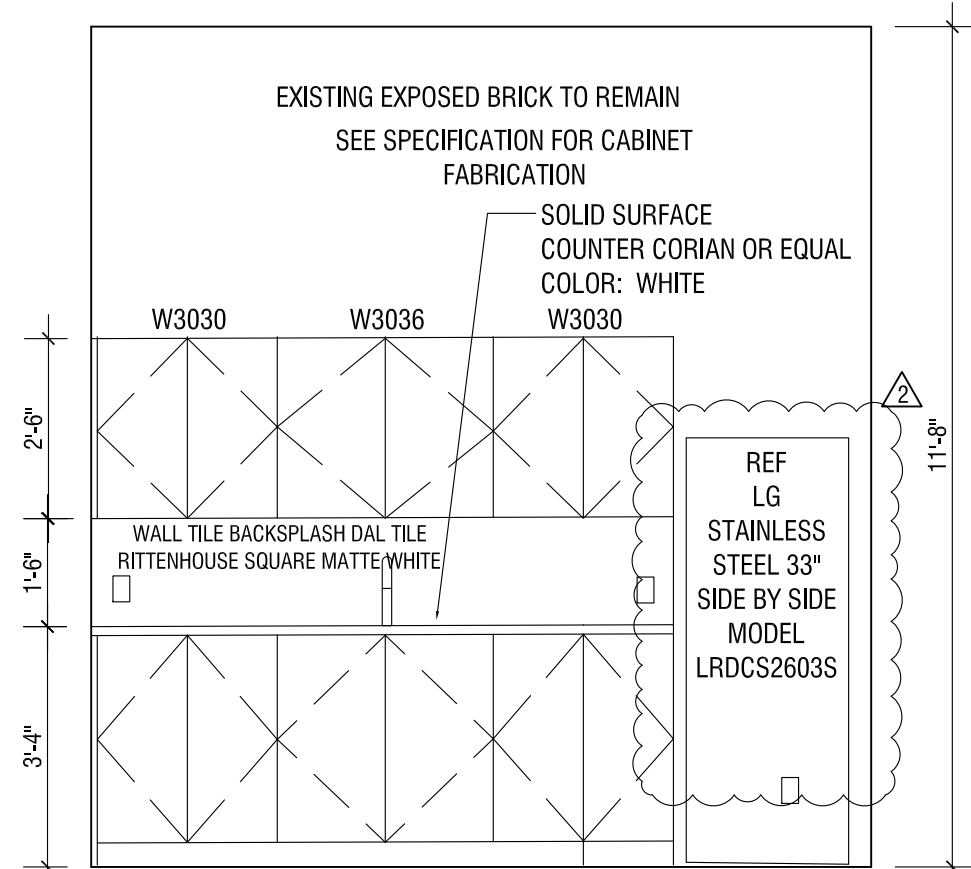
4 INTERIOR ELEVATION  
SCALE: 3/8" = 1'-0"



5 INTERIOR ELEVATION  
SCALE: 3/8" = 1'-0"



6 INTERIOR ELEVATION  
SCALE: 3/8" = 1'-0"



8 INTERIOR ELEVATION KITCHENETTE  
SCALE: 3/8" = 1'-0"

#### DOOR SCHEDULE

MARK	LOCATION	TYPE	DIMENSIONS	DOOR MATERIAL	FRAME MATERIAL	HARDWARE FUNCTION HARDWARE	NOTES	
100	ENTRY	B	1	3'-0" x 7'-0"	ALUM	ALUM	ENTRANCE, CLOSER, BUTT HINGES, WALL STOP, WEATHERSTRIP	NOTE 1
100B	HALL	C	1	3'-0" x 7'-0"	HM	HM	CLASSROOM, CLOSER, BUTT HINGES, WEATHERSTRIP, KICKPLATE	
101	OFFICE	D	2	3'-0" x 7'-0"	HM	HM	OFFICE, BUTT HINGES, WALL STOP, WEATHERSTRIP	
102	OFFICE	D	2	3'-0" x 7'-0"	WD	HM	OFFICE, BUTT HINGES, WALL STOP	
103	UTILITY	A	1	3'-0" x 7'-0"	WD	HM	OFFICE, BUTT HINGES, WALL STOP	
104	OFFICE	D	2	3'-0" x 7'-0"	WD	HM	OFFICE, BUTT HINGES, WALL STOP	
105	OFFICE	D	2	3'-0" x 7'-0"	WD	HM	OFFICE, BUTT HINGES, WALL STOP	
106	RESTROOM	A	1	3'-0" x 7'-0"	WD	HM	PRIVACY, BUTT HINGES, WALL STOP, SILENCERS	
107	CONF	D	2	3'-0" x 7'-0"	WD	HM	OFFICE, BUTT HINGES, WALL STOP	
108	RESTROOM	A	1	3'-0" x 7'-0"	WD	HM	PRIVACY, BUTT HINGES, WALL STOP, SILENCERS	
109	DOCK	C	1	3'-0" x 7'-0"	HM	HM	ENTRANCE, BUTT HINGES, KICKPLATE	
113A	WAREHOUSE	A	1	3'-0" x 7'-0"	HM	HM	EXIT ONLY, BUTT HINGES, KICKPLATE	
113B	WAREHOUSE	A	1	3'-0" x 7'-0"	HM	HM	EXIT ONLY, BUTT HINGES, KICKPLATE	
113C	WAREHOUSE	A	1	3'-0" x 7'-0"	HM	HM	EXIT ONLY, BUTT HINGES, KICKPLATE	
114	CLOSET	A	1	2'-0" x 7'-0"	HM	HM	STOREROOM, BUTT HINGES	

NOTE 1: PROVIDE ELECTRIC STRIKE WITH BUZZER. MOUNT RELEASE ON WALL ADJACENT TO DOOR 100. VON DUPRIN 8100 SERIES OR EQUAL.

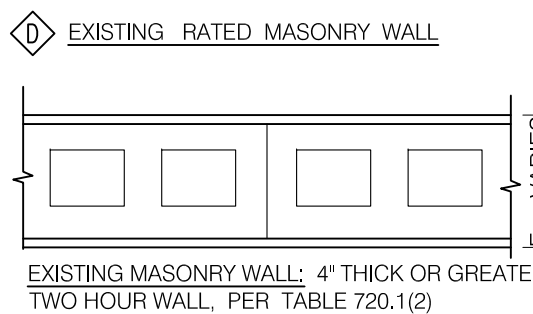
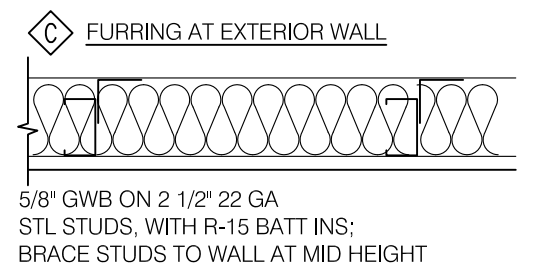
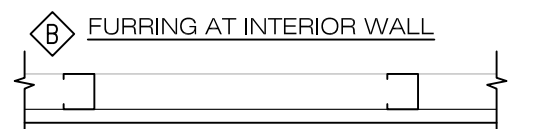
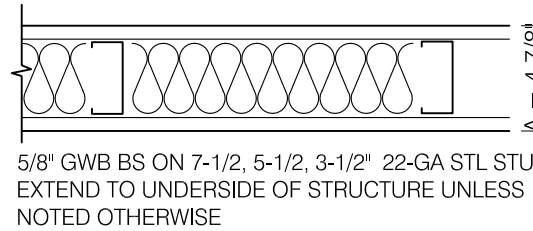
#### FINISH SCHEDULE

MARK	LOCATION	FLOOR	WALL MAT/FIN	BASE	CLG	NOTES
100	HALL	LVT	GWBPNT	VWB	ACP	LVT: RIGID PLUS 3MM WATERPROOF FLOORING RP6D6010P
101	OFFICE	LVT	GWBPNT	VWB	ACP	
102	OFFICE	LVT	GWBPNT	VWB	ACP	
103	UTILITY	LVT	GWBPNT	VWB	ACP	
104	OFFICE	LVT	GWBPNT	VWB	ACP	
105	OFFICE	LVT	GWBPNT	VWB	ACP	
106	RESTROOM	TILE	GWBPNT	VWB	ACP	
107	CONF	LVT	GWBPNT	VWB	ACP	
108	RESTROOM	TILE	GWBPNT	VWB	ACP	
109	DOCK	CONC	CMUPNT	-	-	PAINT EXISTING EXPOSED STRUCTURE
110	WAREHOUSE	EXPOXY (NOTE 1)	CMUPNT	-	-	PAINT EXISTING EXPOSED STRUCTURE
111	REF/FRZR	-	-	-	-	
112	REF/FRZR	-	-	-	-	
113	WAREHOUSE	EXPOXY (NOTE 1)	CMUPNT	-	-	PAINT EXISTING EXPOSED STRUCTURE

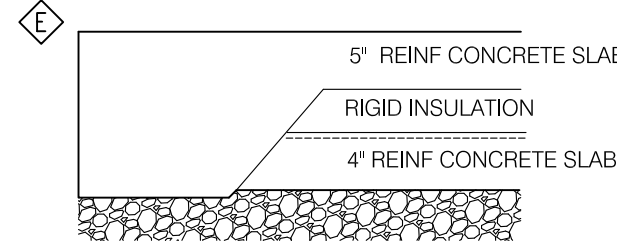
1) PROVIDE ARMORPOXY INDUSTRIAL GRADE TWO PART COATING: ARMORPOXY II <https://armorpoxy.com/armorpoxy-ii/>

#### PARTITION SCHEDULE

A TYPICAL DRYWALL PARTITION EXTEND PARTITIONS TO UNDERSIDE OF STRUCTURE



#### HORIZONTAL ASSEMBLIES



SLAB BENEATH FREEZER - 4" REINF CONCRETE SLAB ON 3" RIGID INSULATION ON 6 ML POLYETHYLENE 4" REINFORCED SLAB ON 2" GRAVEL ON COMPACTED FILL: THICKEN SLAB AT PERIMETER. INSTALL SLAB FLUSH WITH ADJACENT CONCRETE FLOOR



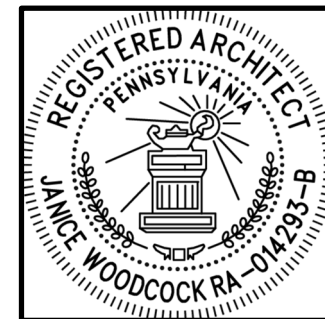
WOODCOCK DESIGN

ARCHITECT  
1518 WALNUT ST. STE 1308  
PHILADELPHIA, PA 19102  
+1 267 738 0956  
WOODCOCK-DESIGN.COM

MEP ENGINEER  
CHESTNUT ENGINEERING  
2 E. LANCASTER PIKE  
SUITE F-2  
ARDMORE, PA 19003

STRUCTURAL ENGINEER  
BEVAN LAWSON, PE  
2200 ARCH STREET  
PHILADELPHIA, PA 19103

SHARE FOOD  
PROGRAM  
DELAWARE COUNTY  
WAREHOUSE  
101 AMOSLAND ROAD  
HOLMES, PA  
19043



JANICE WOODCOCK, AIA  
RA-014293-B  
PHILA BPL: 154698

NO.	REVISION	DATE
1	ADD 1	11/15/2022
2	ADD 2	11/21/2022

SHEET NAME:

FLOOR PLAN &  
DETAILS

DATE: 11/7/2022 BID SET





WOODCOCK DESIGN

1518 WALNUT ST. STE 1308  
PHILADELPHIA, PA 19102  
+1 267 738 0956  
WOODCOCK-DESIGN.COM

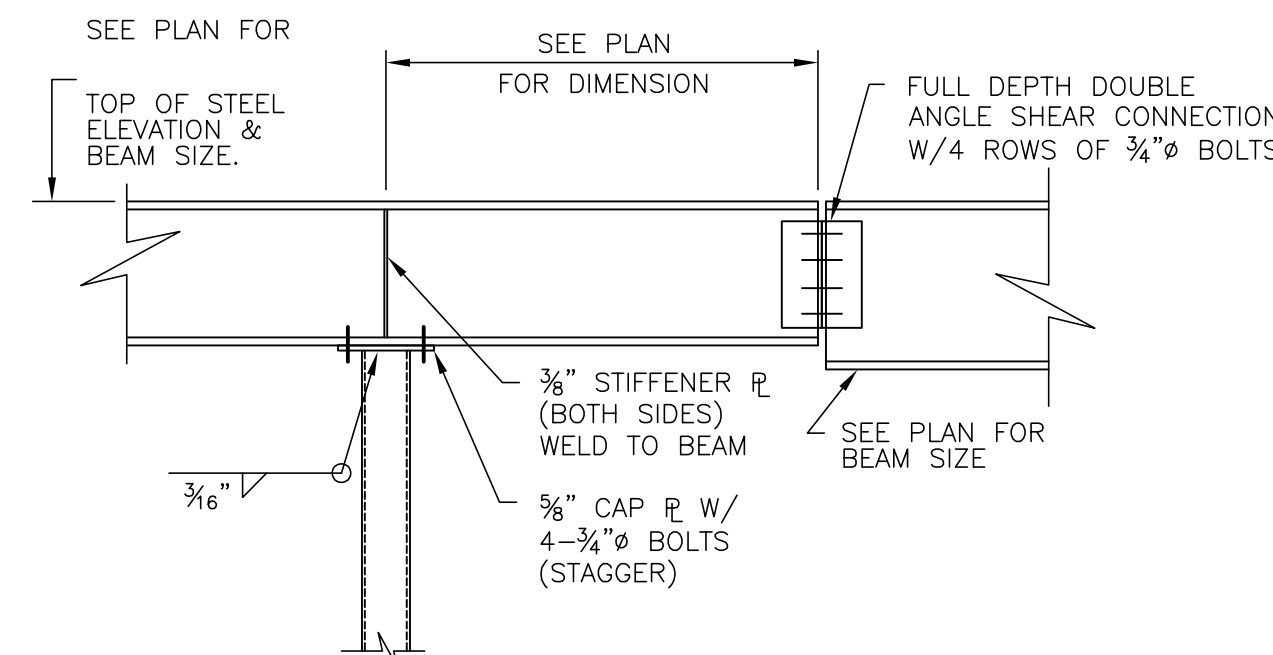
BEVAN E. LAWSON, P.E.

UNIT 107  
2200 ARCH STREET  
PHILADELPHIA, PA 19103  
215-988-9321  
FAX 988-9322

## ROOF FRAMING PLAN

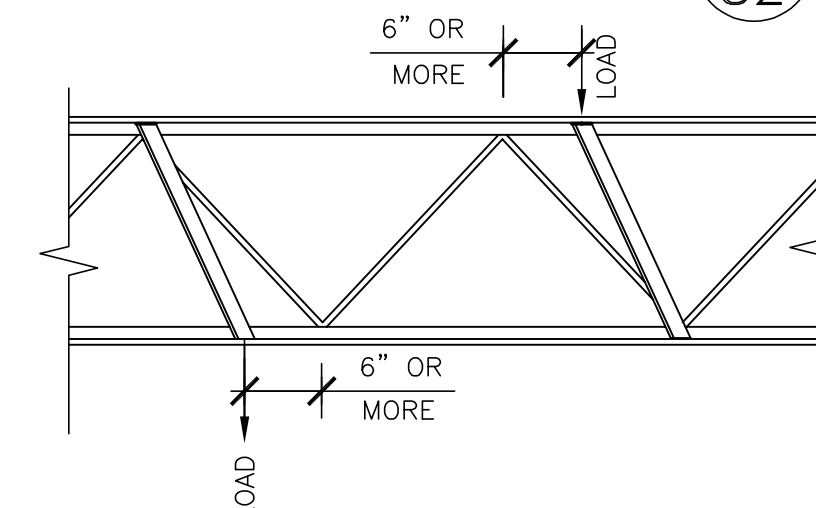
SCALE:  $\frac{1}{8}"=1'-0"$

- SEE PLAN FOR TOP OF STEEL, TOP OF (E) ROOF SLAB ELEVATION +16'-8" (DATUM ELEVATION = 0'-0").
- INDICATES SPAN OF  $1\frac{1}{2}"$ , 20 GAGE PAINTED METAL ROOF DECK. PROVIDE SIDELAP FASTENERS AT 12" (MAXIMUM) SPACING.
- (SL) INDICATES SLOPING BEAM
- COORDINATE SIZE AND LOCATION OF ALL DUCT PENETRATIONS WITH MECHANICAL DRAWINGS.
- SEE DRAWING S1 FOR TYPICAL DETAILS AND GENERAL NOTES.



## CANTILEVER BEAM DETAIL

SCALE:  $\frac{1}{2}"=1'-0"$



## DETAIL WHEN LOADS ARE APPLIED TO JOISTS

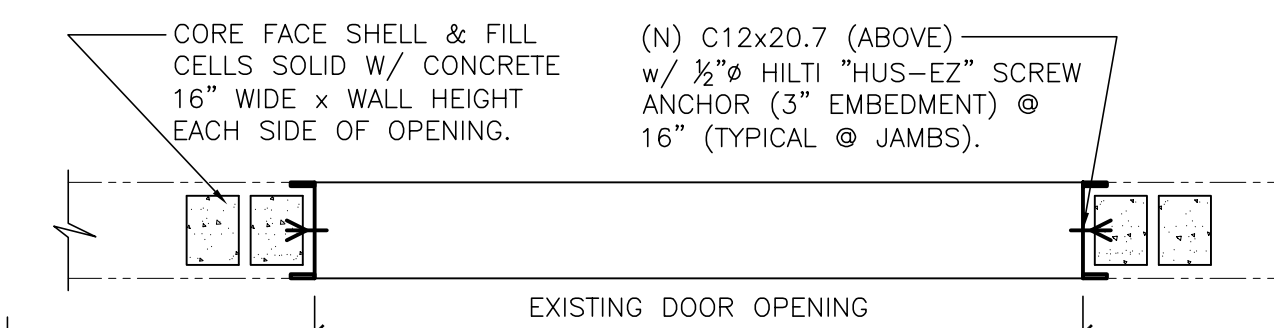
SCALE:  $\frac{3}{4}"=1'-0"$

NOTE: WHEN LOADS OCCUR 6" OR MORE FROM PANEL POINT, FIELD WELD  $\angle 2 \times 2 \times \frac{1}{4}$  TO PANEL POINT FROM WHERE LOAD OCCURS

## TYPICAL ROOF OPENING DETAIL

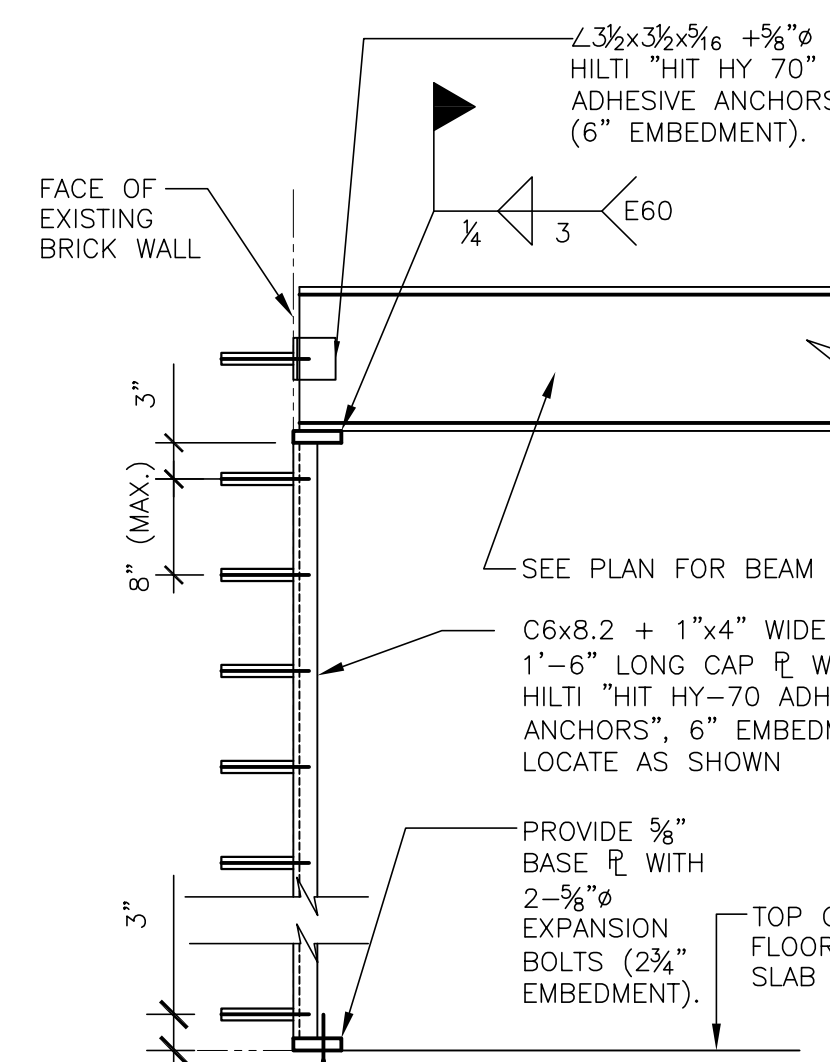
SCALE:  $\frac{3}{4}"=1'-0"$

NOTE: IF LARGEST OPENING DIMENSION IS:  
2'-0" OR LESS USE  $\angle 3\frac{1}{2} \times 3\frac{1}{2} \times \frac{1}{4}$ ,  
5'-0" OR LESS USE  $\angle 4 \times 3\frac{1}{2} \times \frac{1}{4}$  (LLV)  
7'-0" OR LESS USE  $\angle 5 \times 3\frac{1}{2} \times \frac{1}{4}$  (LLV)



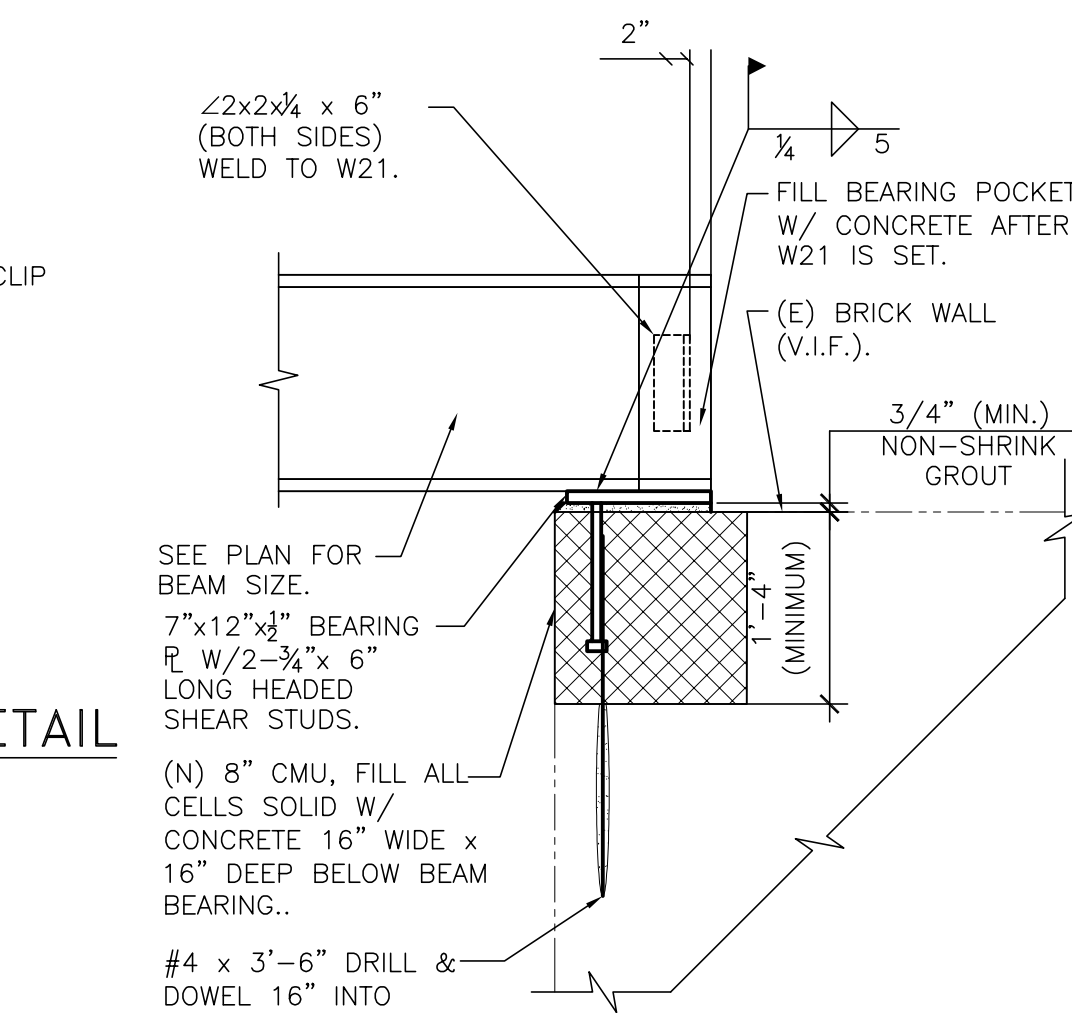
## PLAN VIEW AT REPAIRED WALL

SCALE:  $\frac{1}{2}"=1'-0"$



## SECTION B

SCALE:  $\frac{3}{4}"=1'-0"$



## SECTION E

SCALE:  $\frac{3}{4}"=1'-0"$

## LINTEL DETAIL

SCALE: 1"=1'-0"

COORDINATE WALL OPENINGS LOCATIONS WITH ARCHITECTURAL DRAWINGS

**SHARE FOOD PROGRAM DELCO WAREHOUSE**  
101 AMOSLAND ROAD  
HOLMES, PA 19043

JANICE WOODCOCK, AIA  
RA-014293-B  
PHILA BPL: 154698

NO.	REVISION	DATE
1	LOADING DOCK ADDITION	9/27/22
2	FOR PERMIT	11/08/22

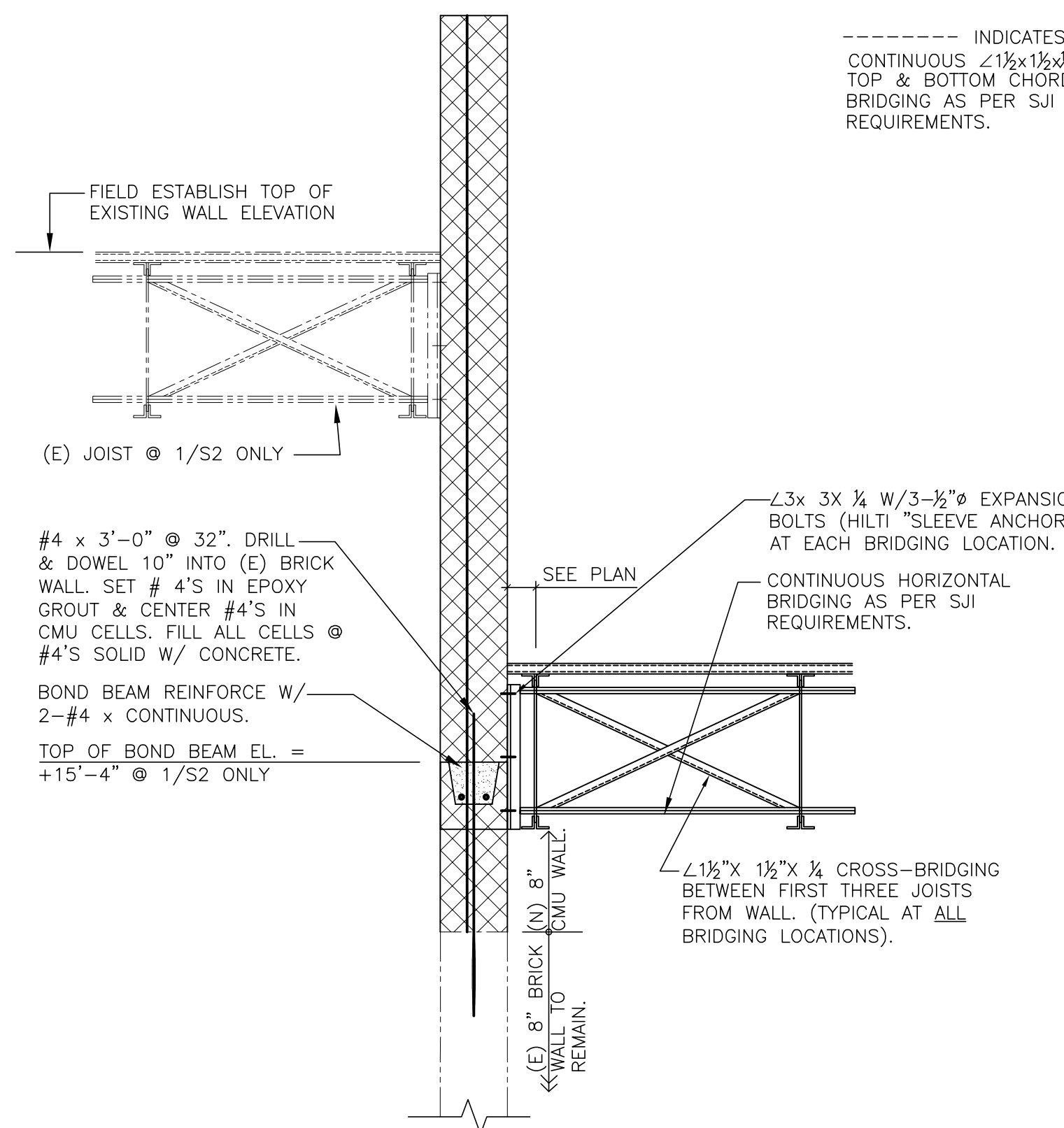
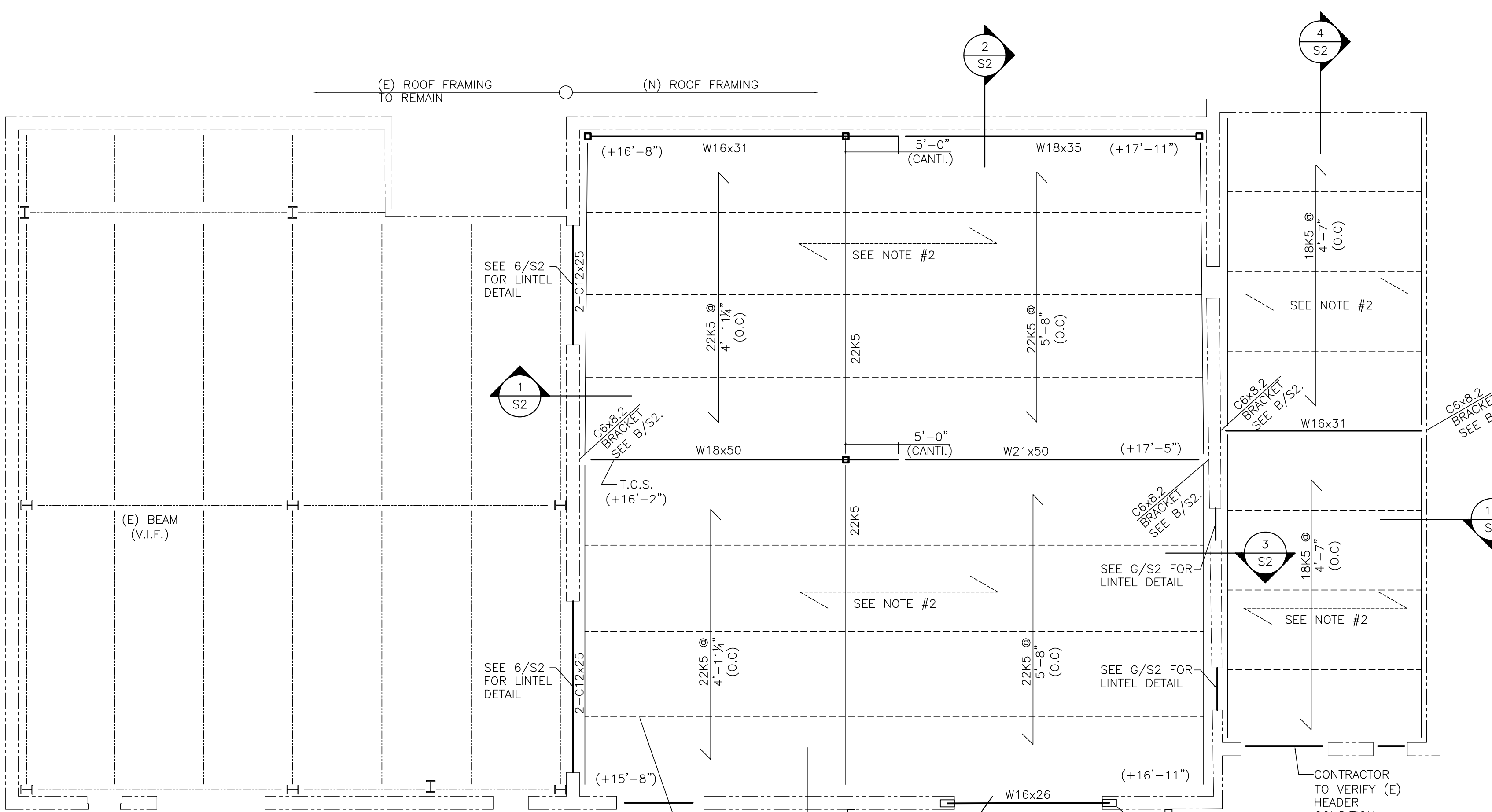
SHEET NAME:

ROOF FRAMING PLAN

DATE:

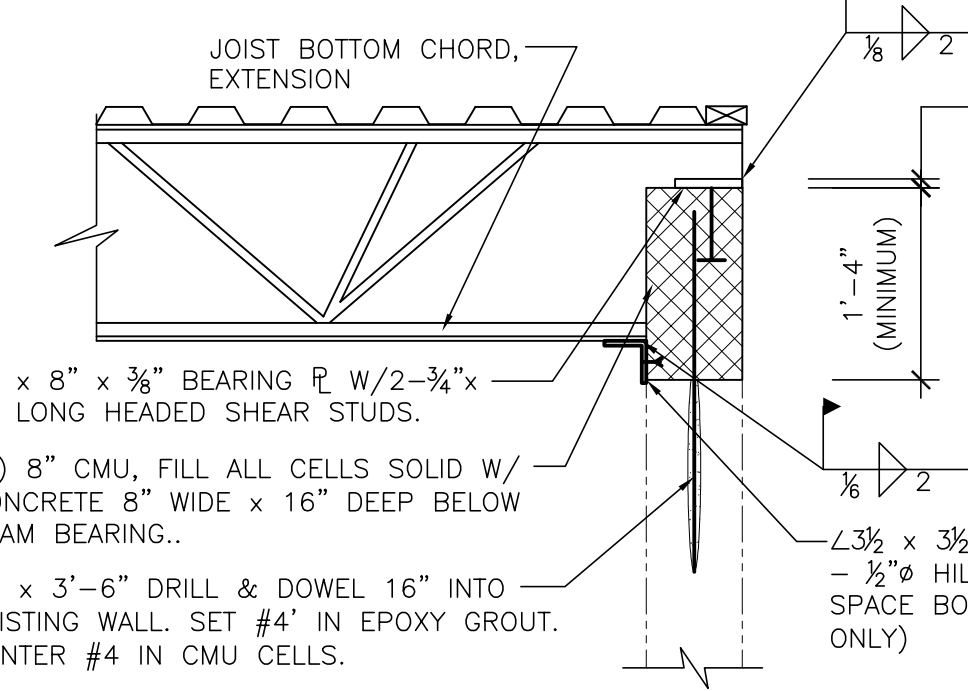
04/25/2022

S2



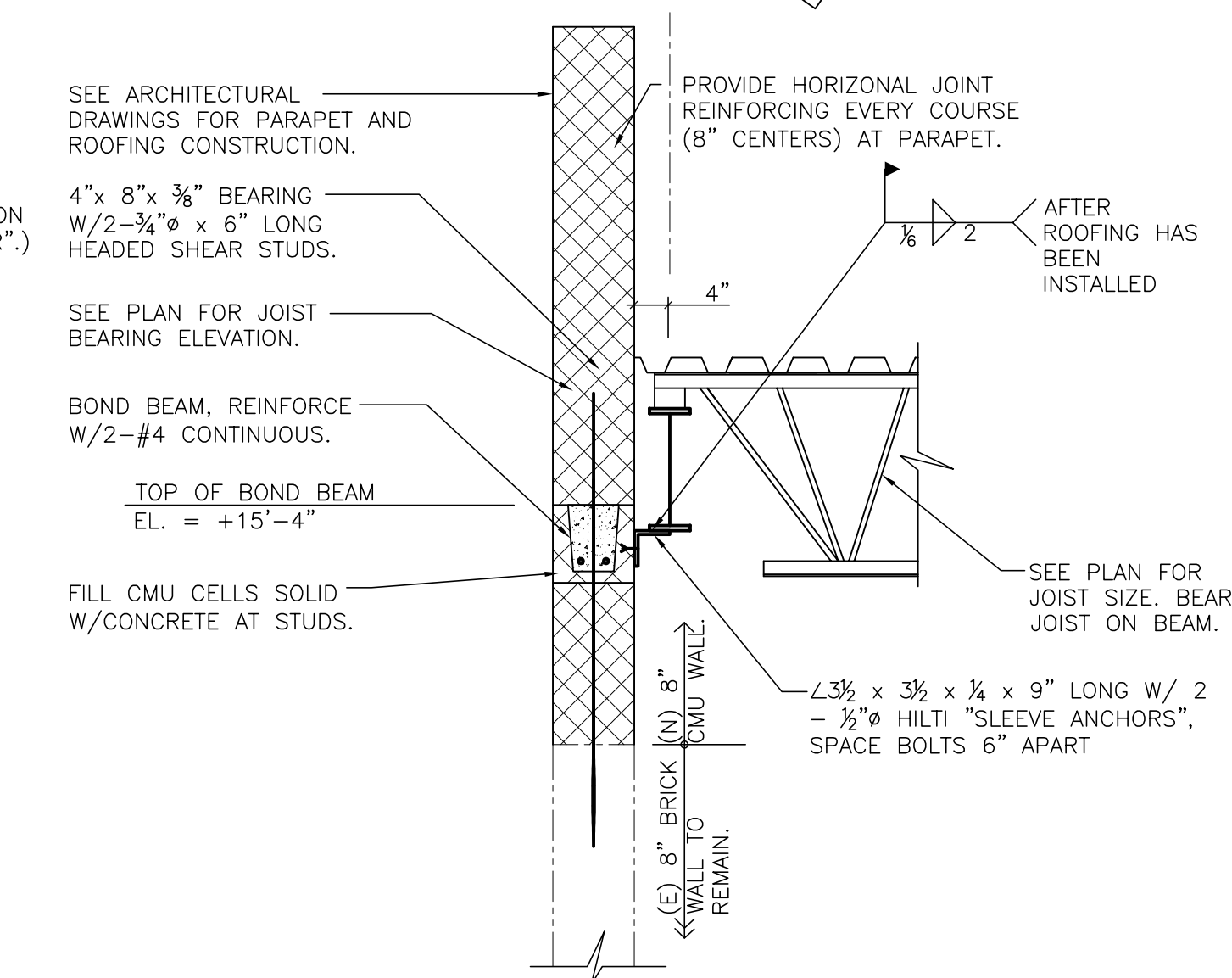
## SECTION 1

SCALE:  $\frac{3}{4}"=1'-0"$



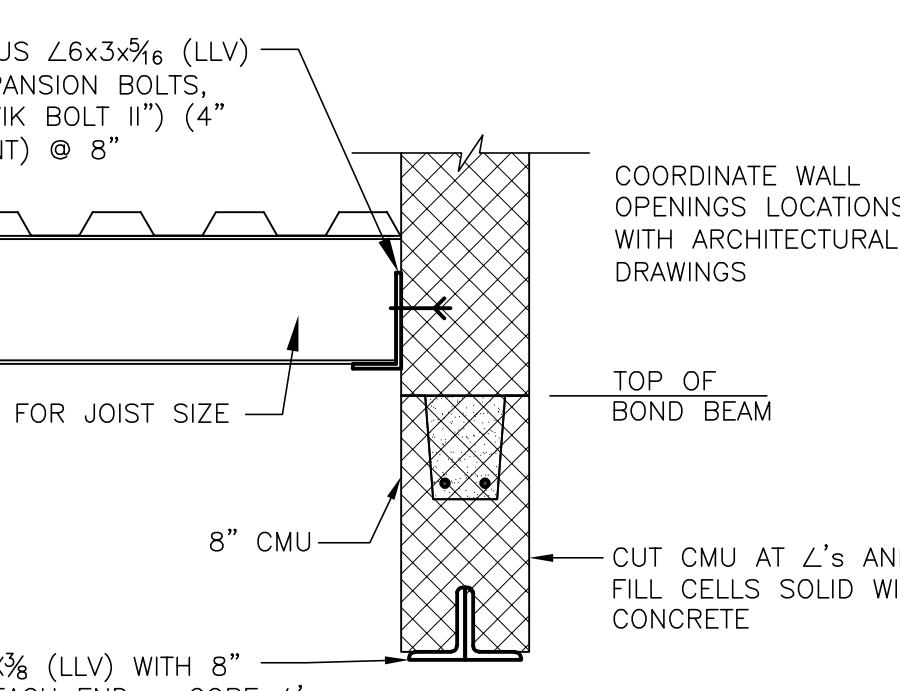
## SECTION 4

SCALE:  $\frac{3}{4}"=1'-0"$



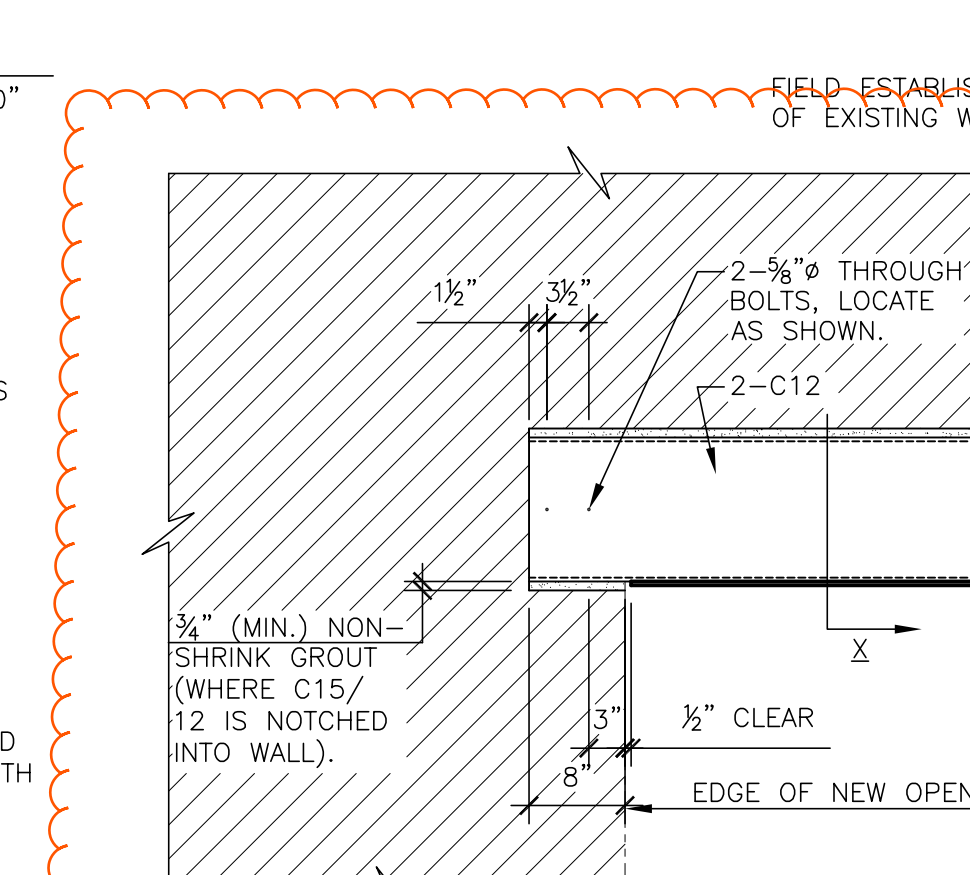
## SECTION 2

SCALE:  $\frac{3}{4}"=1'-0"$



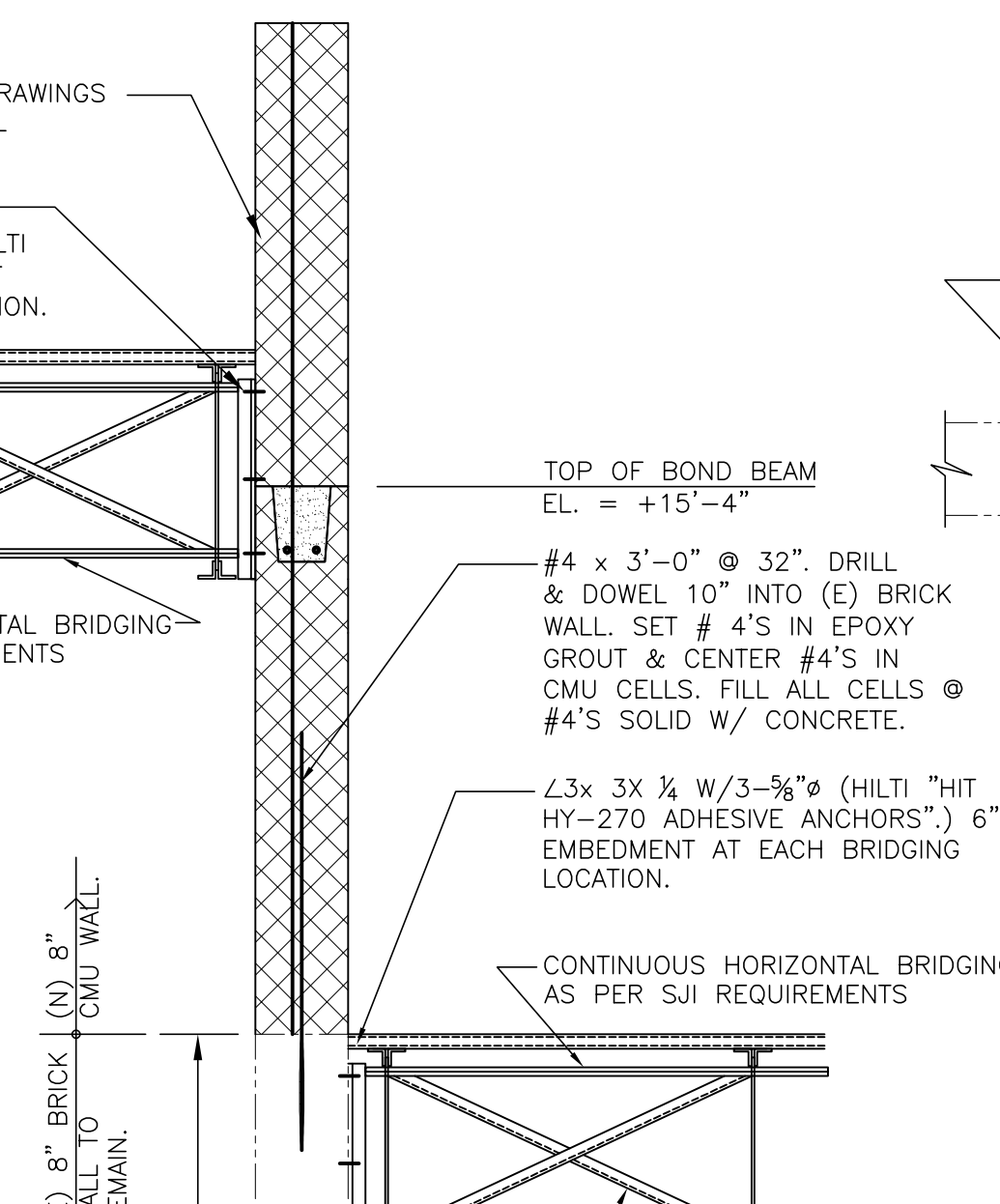
## SECTION 5

SCALE: 1"=1'-0"



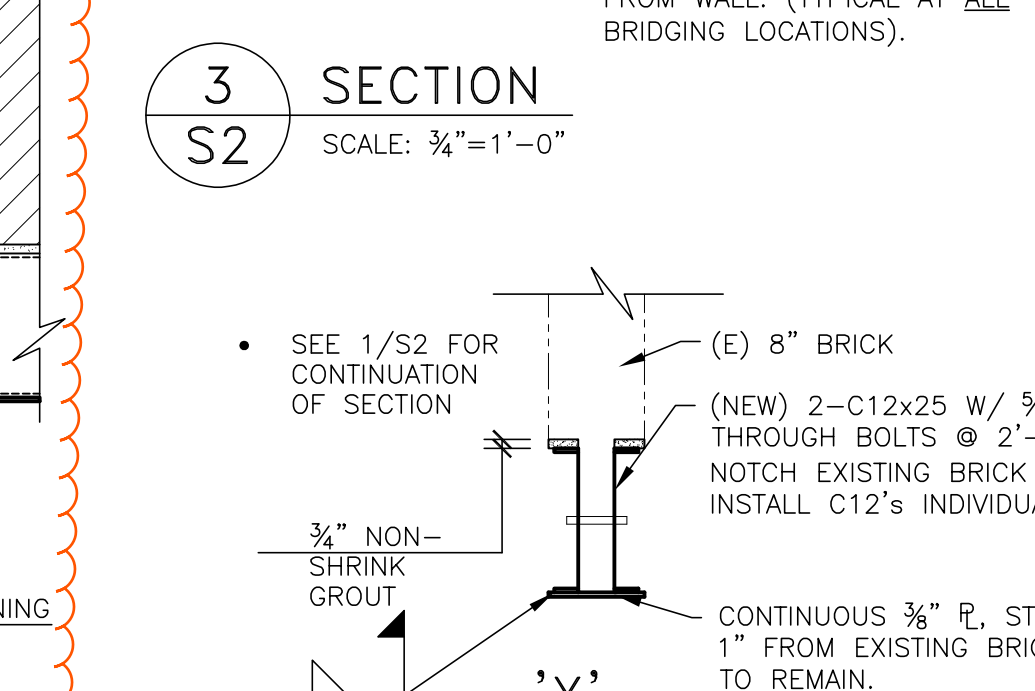
## LINTEL BEARING DETAIL

SCALE:  $\frac{3}{4}"=1'-0"$



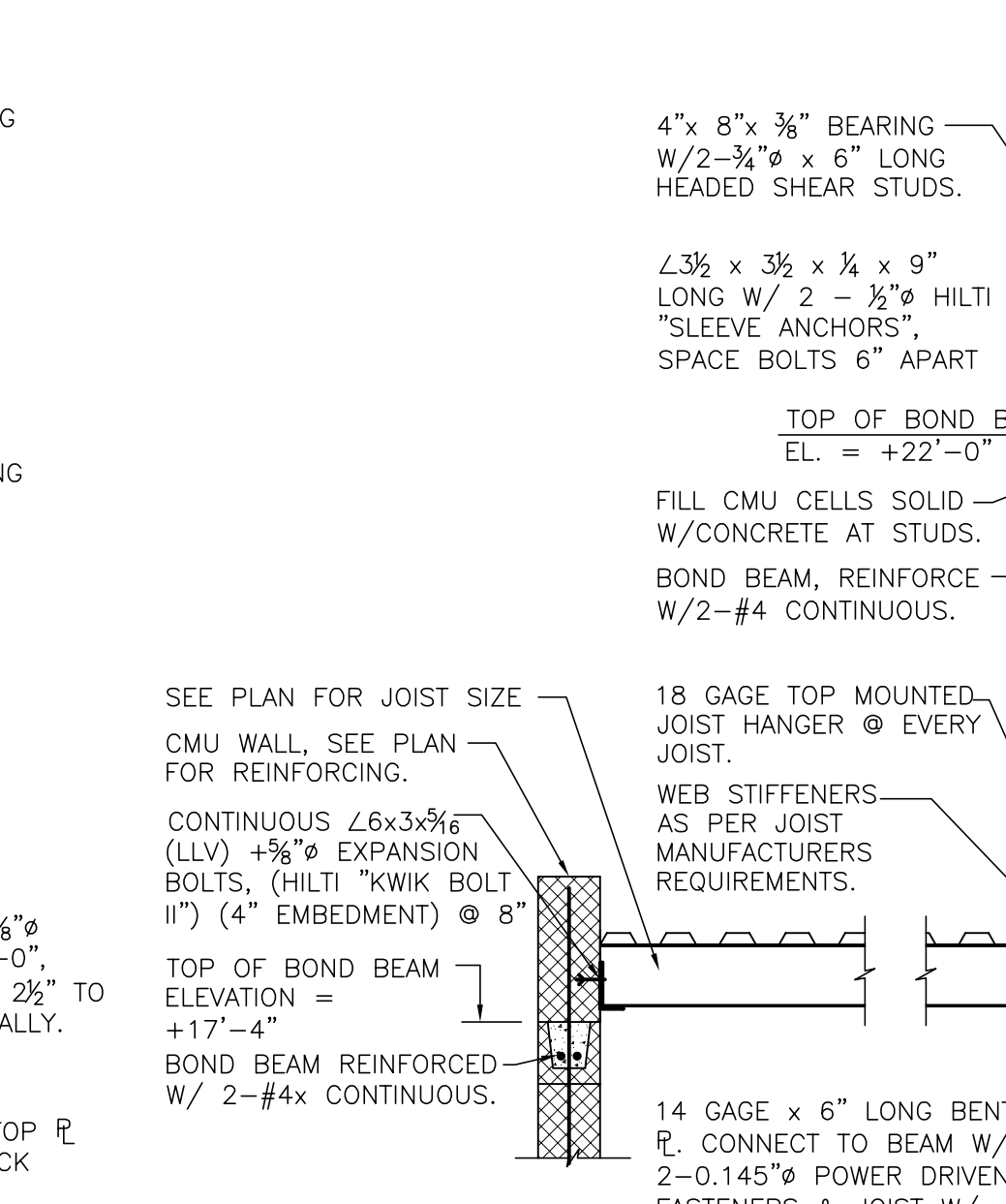
## SECTION 3

SCALE:  $\frac{3}{4}"=1'-0"$



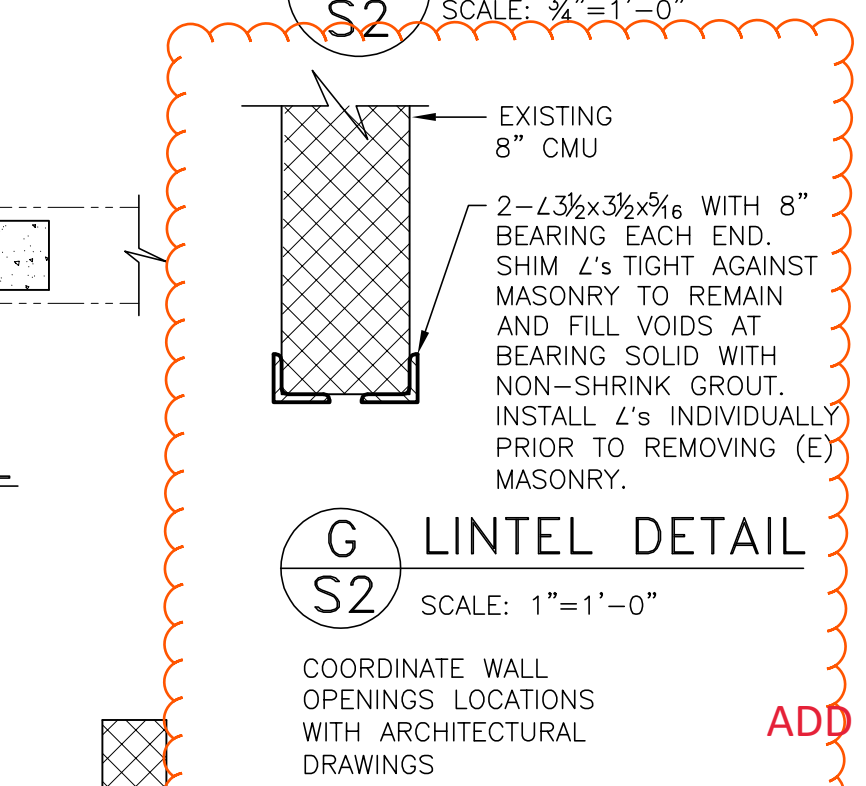
## SECTION 6

SCALE:  $\frac{3}{4}"=1'-0"$



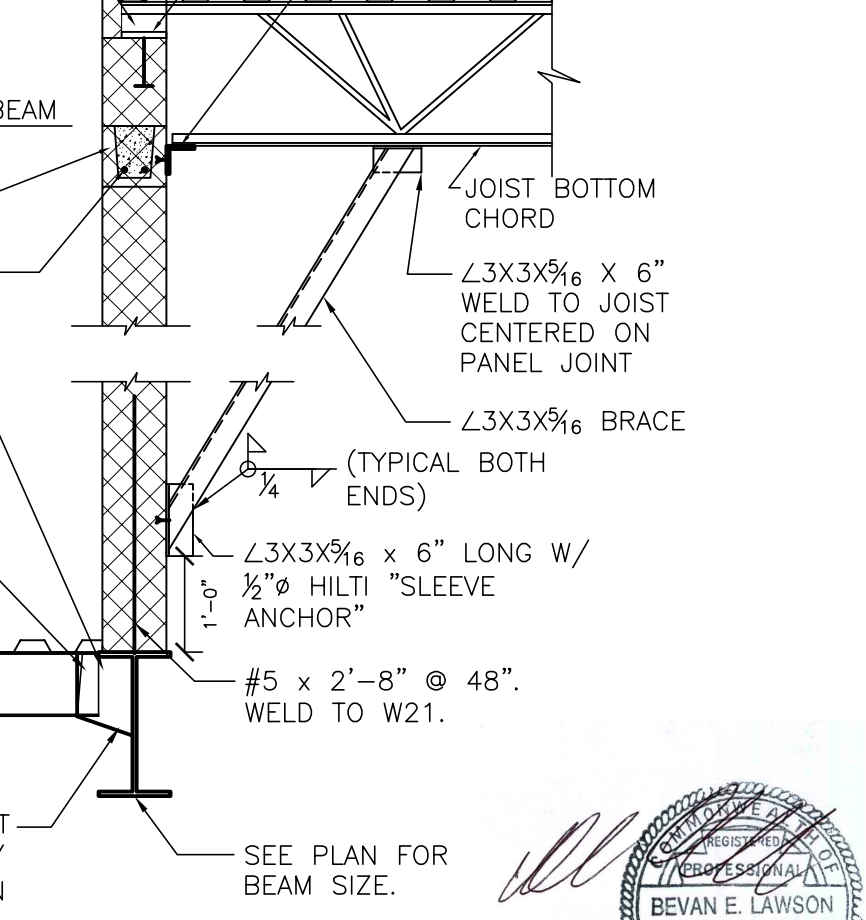
## SECTION 7

SCALE:  $\frac{1}{2}"=1'-0"$



## SECTION 8

SCALE:  $\frac{3}{4}"=1'-0"$



## SECTION 9

SCALE:  $\frac{1}{2}"=1'-0"$



"General Decision Number: PA20220087 11/11/2022

Superseded General Decision Number: PA20210087

State: Pennsylvania

Construction Type: Building

County: Delaware County in Pennsylvania.

BUILDING CONSTRUCTION PROJECTS (does not include single family homes or apartments up to and including 4 stories).

Note: Contracts subject to the Davis-Bacon Act are generally required to pay at least the applicable minimum wage rate required under Executive Order 14026 or Executive Order 13658. Please note that these Executive Orders apply to covered contracts entered into by the federal government that are subject to the Davis-Bacon Act itself, but do not apply to contracts subject only to the Davis-Bacon Related Acts, including those set forth at 29 CFR 5.1(a)(2)-(60).

If the contract is entered into on or after January 30, 2022, or the contract is renewed or extended (e.g., an option is exercised) on or after January 30, 2022:	<ul style="list-style-type: none"><li>. Executive Order 14026 generally applies to the contract.</li><li>. The contractor must pay all covered workers at least \$15.00 per hour (or the applicable wage rate listed on this wage determination, if it is higher) for all hours spent performing on the contract in 2022.</li></ul>
If the contract was awarded on or between January 1, 2015 and January 29, 2022, and the contract is not renewed or extended on or after January 30, 2022:	<ul style="list-style-type: none"><li>. Executive Order 13658 generally applies to the contract.</li><li>. The contractor must pay all covered workers at least \$11.25 per hour (or the applicable wage rate listed on this wage determination, if it is higher) for all hours spent performing on that contract in 2022.</li></ul>

The applicable Executive Order minimum wage rate will be

adjusted annually. If this contract is covered by one of the Executive Orders and a classification considered necessary for performance of work on the contract does not appear on this wage determination, the contractor must still submit a conformance request.

Additional information on contractor requirements and worker protections under the Executive Orders is available at <https://www.dol.gov/agencies/whd/government-contracts>.

Modification Number	Publication Date
0	01/07/2022
1	01/14/2022
2	02/11/2022
3	02/25/2022
4	05/13/2022
5	06/03/2022
6	06/10/2022
7	06/17/2022
8	07/01/2022
9	07/29/2022
10	10/21/2022
11	11/11/2022

ASBE0014-002 05/01/2022

	Rates	Fringes
ASBESTOS WORKER/HEAT & FROST INSULATOR (MECHANICAL- Duct, Pipe & Mechanical System Insulation).....	\$ 56.65	40.65

BOIL0013-008 01/01/2022

	Rates	Fringes
BOILERMAKER.....	\$ 50.17	34.96

BRPA0001-016 05/01/2019

	Rates	Fringes
BRICKLAYER (Including Pointing, Caulking, and Cleaning).....	\$ 43.45	29.17
MASON - STONE.....	\$ 43.25	29.60

BRPA0001-017 05/01/2021



	Rates	Fringes
TILE FINISHER.....	\$ 25.10	20.75
TILE SETTER.....	\$ 48.01	28.67

-----  
 CARP0219-005 05/01/2022

	Rates	Fringes
MILLWRIGHT.....	\$ 49.83	33.96

-----  
 CARP0251-004 05/01/2022

	Rates	Fringes
CARPENTER (Floor Laying - Hardwood, Carpet and Vinyl Only).....	\$ 48.00	29.21

-----  
 CARP0255-008 05/01/2022

	Rates	Fringes
CARPENTER (Includes, Acoustical Ceiling Installation, Batt Insulation, Drywall Hanging, Metal Stud Installation, Firestopping, Form Work, Gutter Installation, Metal Flashing Installation, Metal Roof Installation, Scaffold Building and Siding Installation- Metal, Aluminum, and Vinyl).....	\$ 42.53	28.71

-----  
 \* CARP0474-004 11/01/2022

	Rates	Fringes
PILEDRIVERMAN.....	\$ 45.73	39.44

-----  
 ELEC0098-009 05/03/2021

	Rates	Fringes
ELECTRICIAN (Alarm Installation Only).....	\$ 52.31	43.44%+17.72

ELEC0126-008 05/31/2021

	Rates	Fringes
LINE CONSTRUCTION		
Lineman.....	\$ 57.93	32.25%+11.00

-----  
ELEC0654-005 05/30/2022

	Rates	Fringes
ELECTRICIAN (Includes HVAC/Temperature Controls Installation, Solar Panel Wiring and Installation; Excludes Low Voltage Wiring, Installation of Sound and Communication Systems and Alarm Installation).....	\$ 46.48	27.25%+23.54

-----  
ELEV0005-002 01/01/2022

	Rates	Fringes
ELEVATOR MECHANIC.....	\$ 63.52	36.885+a+b

FOOTNOTES FOR ELEVATOR MECHANICS:

A. PAID VACATION: Employer contributes 8% of basic hourly rate for 5 years or more of service or 6% for 6 months to 5 years of service.

B. Eight Paid Holidays (provided employee has worked 5 consecutive days before and the working day after the holiday): New Years's Day; Memorial Day; Independence Day; Labor Day; Veteran's Day; Thanksgiving Day and the Friday after Thanksgiving Day, and Christmas Day.

-----  
ENGI0066-047 07/01/2014

	Rates	Fringes
POWER EQUIPMENT OPERATOR		
Mechanic.....	\$ 28.37	15.66

-----  
ENGI0542-034 05/01/2021

	Rates	Fringes
--	-------	---------

## POWER EQUIPMENT OPERATOR

Crane, Gradall, Bulldozer, Bobcat/Skid Steer/ Skid Loader, Grader/Blade, Loader, Paver (Asphalt, Aggregate, and Concrete), Backhoe/ Excavator/ Trackhoe, Boom, Concrete Pump, Crusher, Drill Rig Caissons, Milling Machine...	\$ 49.25	31.44
Hoist (Single Drum), Forklift (all types).....	\$ 45.16	30.24
Hoist (With Two Towers).....	\$ 49.25	31.44
Oiler, Articulating Truck Operator.....	\$ 42.16	29.34
Pump.....	\$ 43.14	29.64
Roller.....	\$ 45.16	30.24

-----  
IRON0401-006 07/01/2022

	Rates	Fringes
IRONWORKER (Reinforcing and Structural).....	\$ 49.70	39.10

-----  
LAB00135-001 05/01/2021

	Rates	Fringes
LABORER (Mason Tender- Brick)....	\$ 33.02	25.05

-----  
LAB00413-007 05/01/2021

	Rates	Fringes
LABORER Common or General; Concrete Worker.....	\$ 32.60	24.82
Mason Tender- Cement/Concrete.....	\$ 33.02	25.05

-----  
PAIN0021-029 05/01/2021

	Rates	Fringes
PAINTER Brush and Roller.....	\$ 41.24	28.10
Drywall Finisher.....	\$ 38.90	28.56
Spray.....	\$ 42.49	28.10

-----

PAIN0252-007 05/01/2022

	Rates	Fringes
GLAZIER.....	\$ 46.09	34.83

-----  
PLAS0008-003 05/01/2022

	Rates	Fringes
PLASTERER.....	\$ 38.57	32.19

-----  
PLAS0592-037 05/01/2022

	Rates	Fringes
CEMENT MASON/CONCRETE FINISHER...	\$ 42.05	33.26

-----  
PLUM0420-012 05/01/2021

	Rates	Fringes
PIPEFITTER (Including HVAC Pipe and HVAC Unit Installation).....	\$ 62.32	38.73

-----  
PLUM0420-013 05/01/2021

	Rates	Fringes
PIPEFITTER Mechanical Equipment Serviceman (HVAC Pipe and Unit Installation Only).....	\$ 62.32	38.73

-----  
PLUM0690-011 05/01/2022

	Rates	Fringes
PLUMBER.....	\$ 62.73	36.21

-----  
ROOF0030-013 05/01/2021

	Rates	Fringes
ROOFER (Includes Waterproofing, Excludes Metal Roof Installation).....	\$ 40.33	32.62

-----  
SFPA0692-003 01/01/2022

	Rates	Fringes
SPRINKLER FITTER (Fire Sprinklers).....	\$ 60.29	30.88
-----		
SHEE0019-020 05/01/2022		

	Rates	Fringes
SHEET METAL WORKER (Includes HVAC Duct Installation).....	\$ 55.75	45.78
-----		
FOOTNOTE: Paid Holiday: Election Day		
-----		
* UAVG-PA-0036 01/01/2016		

	Rates	Fringes
ELECTRICIAN (Installation of Sound and Communication Systems Only).....	\$ 45.94	25.07
ELECTRICIAN (Low Voltage Wiring Only).....	\$ 44.96	25.66
-----		
SUPA2011-045 08/20/2014		

	Rates	Fringes
IRONWORKER, ORNAMENTAL.....	\$ 34.27	22.55
OPERATOR: Drill.....	\$ 28.55	15.78
TRUCK DRIVER: Dump Truck.....	\$ 21.31	0.00
-----		

WELDERS - Receive rate prescribed for craft performing operation to which welding is incidental.

=====

Note: Executive Order (EO) 13706, Establishing Paid Sick Leave for Federal Contractors applies to all contracts subject to the Davis-Bacon Act for which the contract is awarded (and any solicitation was issued) on or after January 1, 2017. If this contract is covered by the EO, the contractor must provide employees with 1 hour of paid sick leave for every 30 hours they work, up to 56 hours of paid sick leave each year. Employees must be permitted to use paid sick leave for their own illness, injury or other health-related needs, including

preventive care; to assist a family member (or person who is like family to the employee) who is ill, injured, or has other health-related needs, including preventive care; or for reasons resulting from, or to assist a family member (or person who is like family to the employee) who is a victim of, domestic violence, sexual assault, or stalking. Additional information on contractor requirements and worker protections under the EO is available at <https://www.dol.gov/agencies/whd/government-contracts>.

Unlisted classifications needed for work not included within the scope of the classifications listed may be added after award only as provided in the labor standards contract clauses (29CFR 5.5 (a) (1) (ii)).

-----

The body of each wage determination lists the classification and wage rates that have been found to be prevailing for the cited type(s) of construction in the area covered by the wage determination. The classifications are listed in alphabetical order of ""identifiers"" that indicate whether the particular rate is a union rate (current union negotiated rate for local), a survey rate (weighted average rate) or a union average rate (weighted union average rate).

#### Union Rate Identifiers

A four letter classification abbreviation identifier enclosed in dotted lines beginning with characters other than ""SU"" or ""UAVG"" denotes that the union classification and rate were prevailing for that classification in the survey. Example: PLUM0198-005 07/01/2014. PLUM is an abbreviation identifier of the union which prevailed in the survey for this classification, which in this example would be Plumbers. 0198 indicates the local union number or district council number where applicable, i.e., Plumbers Local 0198. The next number, 005 in the example, is an internal number used in processing the wage determination. 07/01/2014 is the effective date of the most current negotiated rate, which in this example is July 1, 2014.

Union prevailing wage rates are updated to reflect all rate changes in the collective bargaining agreement (CBA) governing this classification and rate.

#### Survey Rate Identifiers

Classifications listed under the ""SU"" identifier indicate that no one rate prevailed for this classification in the survey and the published rate is derived by computing a weighted average rate based on all the rates reported in the survey for that classification. As this weighted average rate includes all rates reported in the survey, it may include both union and non-union rates. Example: SULA2012-007 5/13/2014. SU indicates the rates are survey rates based on a weighted average calculation of rates and are not majority rates. LA indicates the State of Louisiana. 2012 is the year of survey on which these classifications and rates are based. The next number, 007 in the example, is an internal number used in producing the wage determination. 5/13/2014 indicates the survey completion date for the classifications and rates under that identifier.

Survey wage rates are not updated and remain in effect until a new survey is conducted.

#### Union Average Rate Identifiers

Classification(s) listed under the UAVG identifier indicate that no single majority rate prevailed for those classifications; however, 100% of the data reported for the classifications was union data. EXAMPLE: UAVG-OH-0010 08/29/2014. UAVG indicates that the rate is a weighted union average rate. OH indicates the state. The next number, 0010 in the example, is an internal number used in producing the wage determination. 08/29/2014 indicates the survey completion date for the classifications and rates under that identifier.

A UAVG rate will be updated once a year, usually in January of each year, to reflect a weighted average of the current negotiated/CBA rate of the union locals from which the rate is based.

---

#### WAGE DETERMINATION APPEALS PROCESS

1.) Has there been an initial decision in the matter? This can be:

- \* an existing published wage determination
- \* a survey underlying a wage determination
- \* a Wage and Hour Division letter setting forth a position on a wage determination matter
- \* a conformance (additional classification and rate) ruling

On survey related matters, initial contact, including requests for summaries of surveys, should be with the Wage and Hour National Office because National Office has responsibility for the Davis-Bacon survey program. If the response from this initial contact is not satisfactory, then the process described in 2.) and 3.) should be followed.

With regard to any other matter not yet ripe for the formal process described here, initial contact should be with the Branch of Construction Wage Determinations. Write to:

Branch of Construction Wage Determinations  
Wage and Hour Division  
U.S. Department of Labor  
200 Constitution Avenue, N.W.  
Washington, DC 20210

2.) If the answer to the question in 1.) is yes, then an interested party (those affected by the action) can request review and reconsideration from the Wage and Hour Administrator (See 29 CFR Part 1.8 and 29 CFR Part 7). Write to:

Wage and Hour Administrator  
U.S. Department of Labor  
200 Constitution Avenue, N.W.  
Washington, DC 20210

The request should be accompanied by a full statement of the interested party's position and by any information (wage payment data, project description, area practice material, etc.) that the requestor considers relevant to the issue.

3.) If the decision of the Administrator is not favorable, an interested party may appeal directly to the Administrative Review Board (formerly the Wage Appeals Board). Write to:

Administrative Review Board  
U.S. Department of Labor  
200 Constitution Avenue, N.W.  
Washington, DC 20210

4.) All decisions by the Administrative Review Board are final.

=====

END OF GENERAL DECISIO"